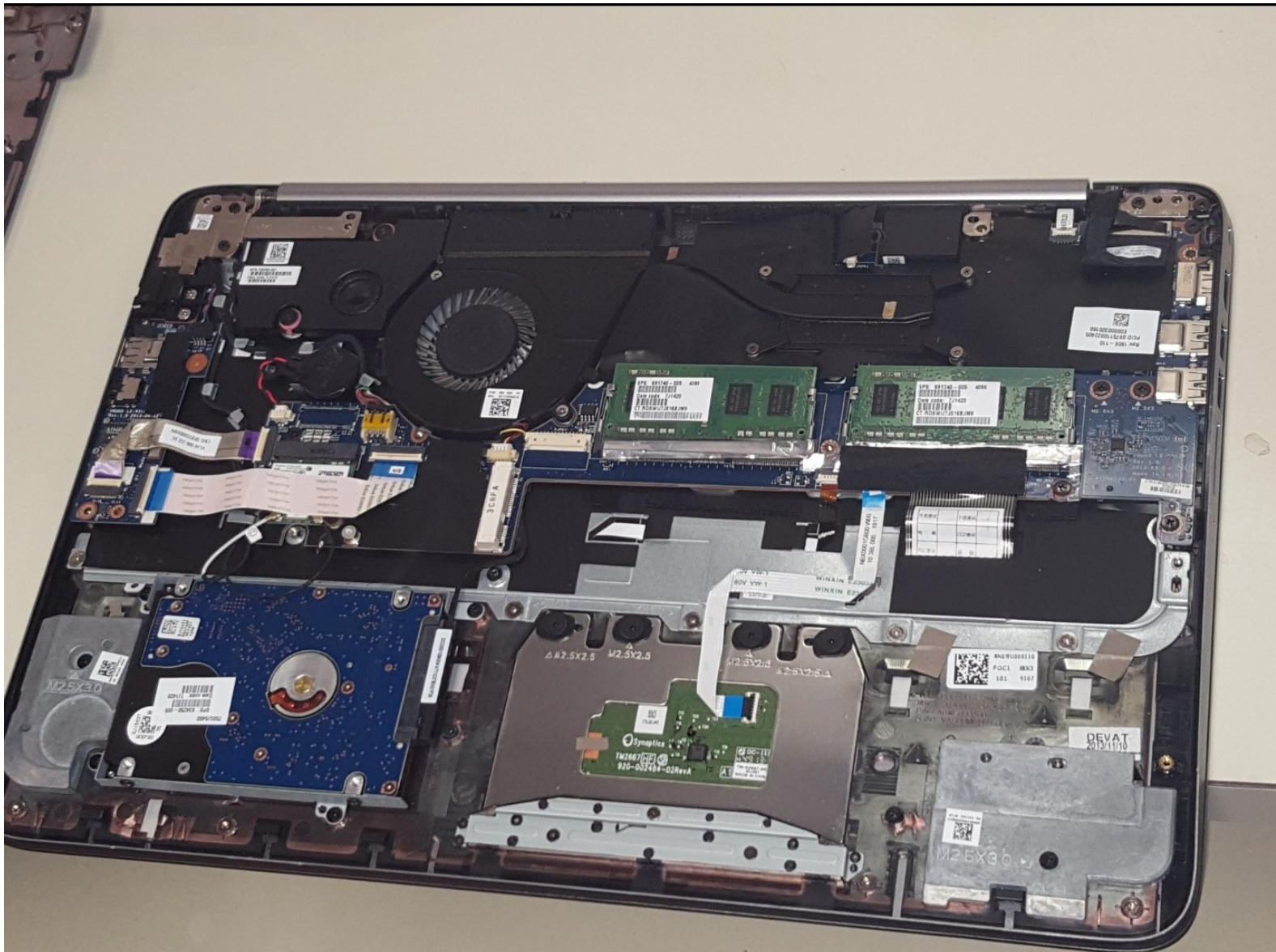




# HP Envy Touchsmart m6-k125dx Hard Drive Replacement

Replace your Hard Drive in order to increase your data storage.

Written By: Conner Anderson



---

## INTRODUCTION

Use this guide to help replace your Hard Drive for greater data storage. The Hard Drive is a memory hardware device with the sole purpose of storing and retrieving data.

---

### TOOLS:

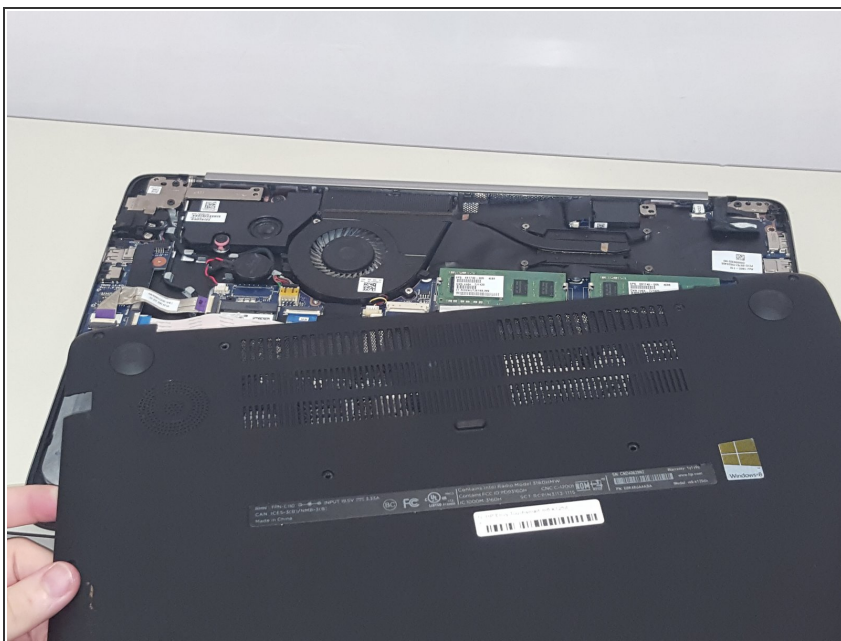
- [JIS #000 Screwdriver](#) (1)
  - [Phillips #000 Screwdriver](#) (1)
-

## Step 1 — Back Panel



- Turn the laptop over so that the bottom is facing up
- Using the J0 screwdriver, unscrew all 12 M2.5x5.5 screws from the back panel.

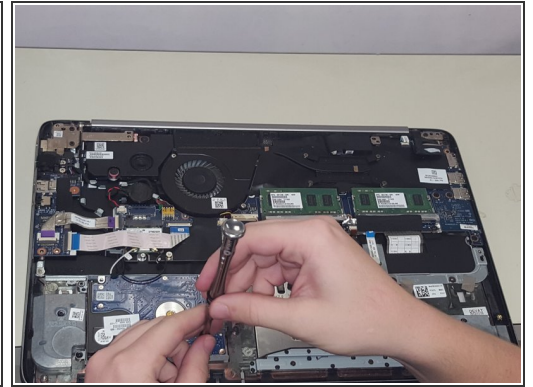
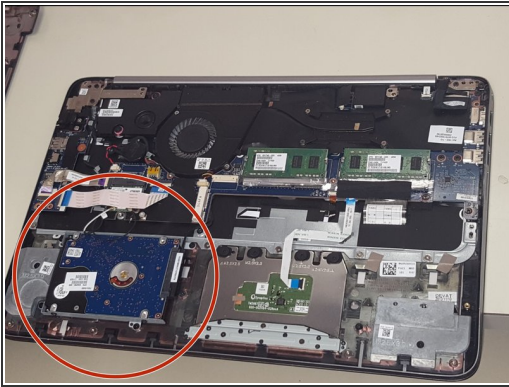
## Step 2



- Carefully remove the back panel to reveal the inner components.

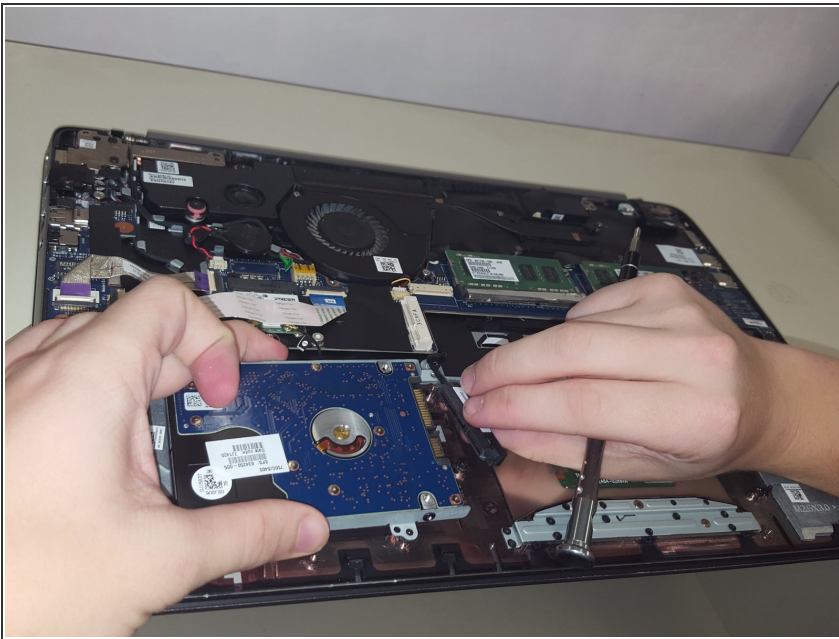


## Step 3 — Hard Drive



- Using the JIS screwdriver along with the J000 head, unscrew the four Phillips PM2.5x5.5 screws, and place them aside.

## Step 4



- Carefully detach the Hard Drive Adapter, and remove the Hard Drive from the laptop.

⚠ Make sure not to pull from the cord; pull from the head of the adapter.

To reassemble your device, follow these instructions in reverse order.