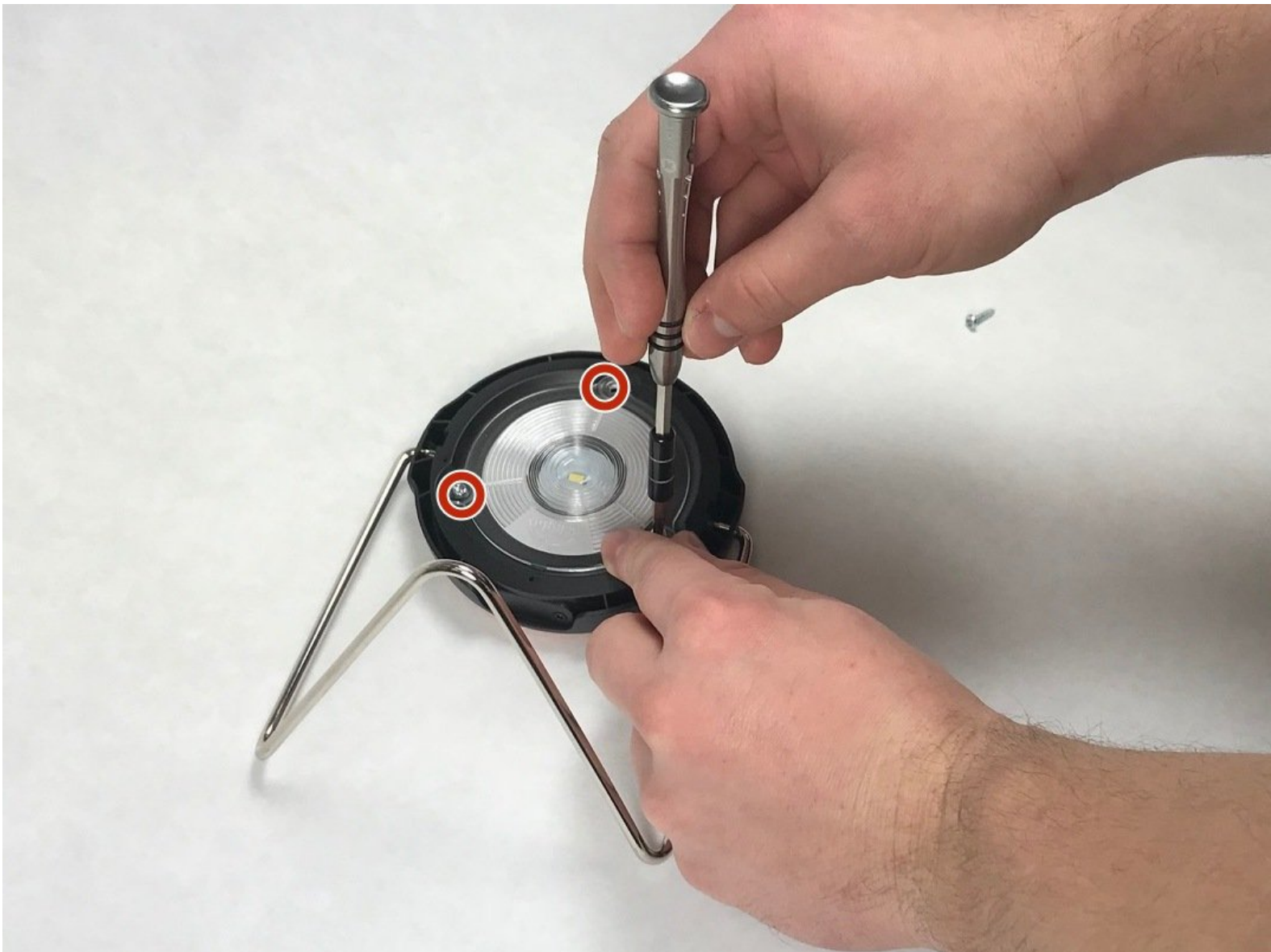




d.light Solar Lantern S2 Battery Replacement

This guide shows how to replace the battery for the d.light Solar Lantern S2.

Written By: Jeremiah Rhoades



INTRODUCTION

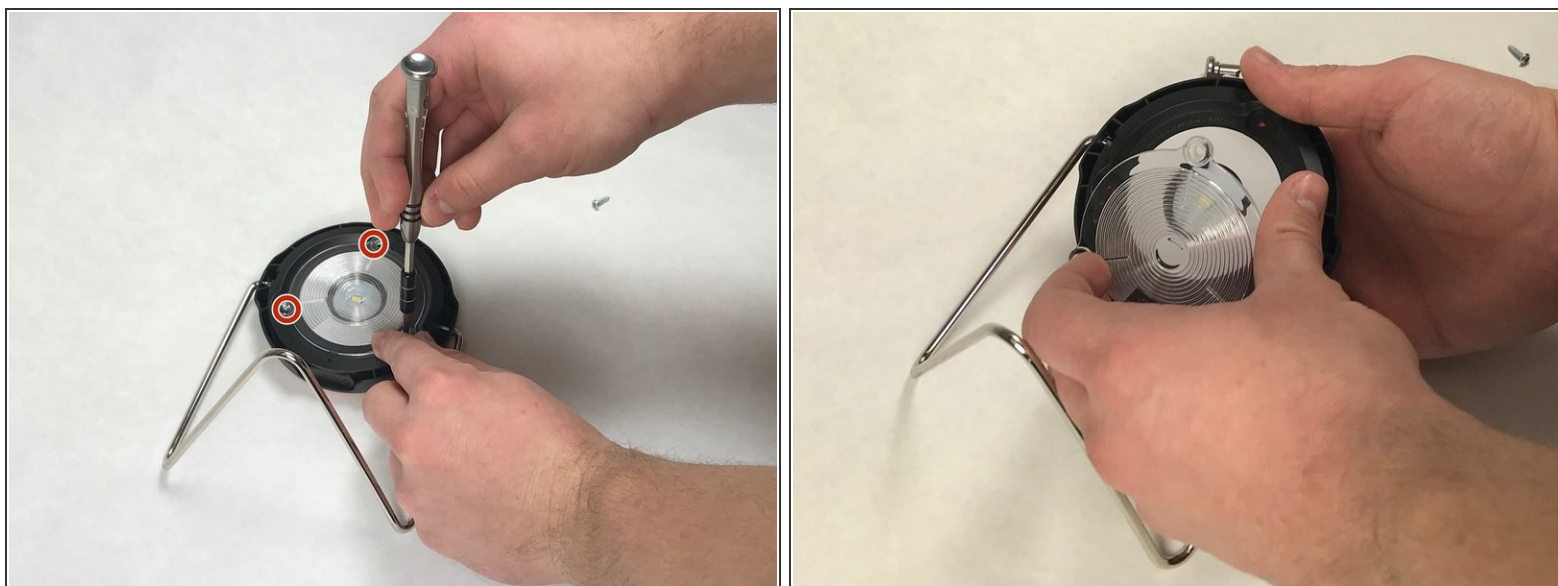
This guide shows how to replace the battery for the d.light Solar Lantern S2.



TOOLS:

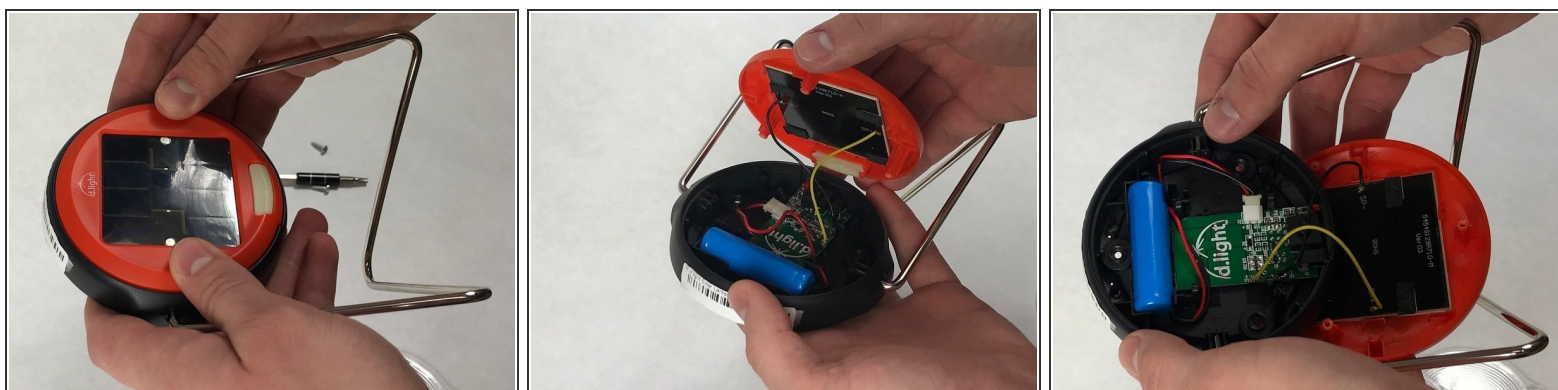
- [T15 Security Torx Screwdriver](#) (1)
-

Step 1 — Battery



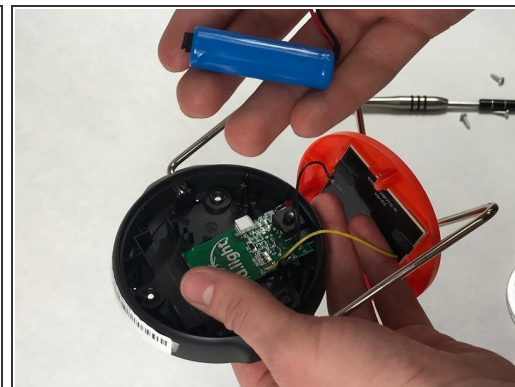
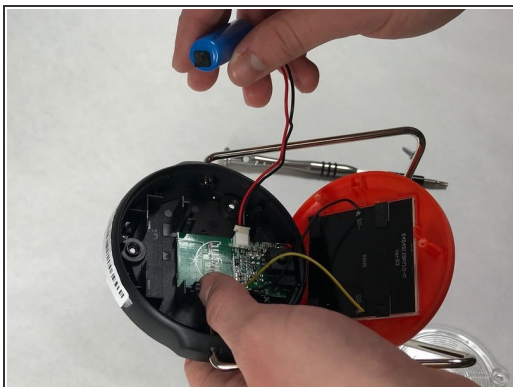
- To remove the lens, three T15 x 12.5mm screws must be removed by a T15 head screwdriver.
- The location of the other two screws are marked in red.

Step 2



- After the lens has been removed the back cover needs to be removed. There are no snaps or screws holding it in place.

Step 3



- Take the battery out of its setting. It is only held in by friction (no snaps or screws).
- Disconnect the battery by unplugging the white connector.
- Install the new battery

To reassemble your device, follow these instructions in reverse order.