



Written By: Jay Shah



INTRODUCTION

You will need a screwdriver with a PH000 head, and a prying tool.



TOOLS:

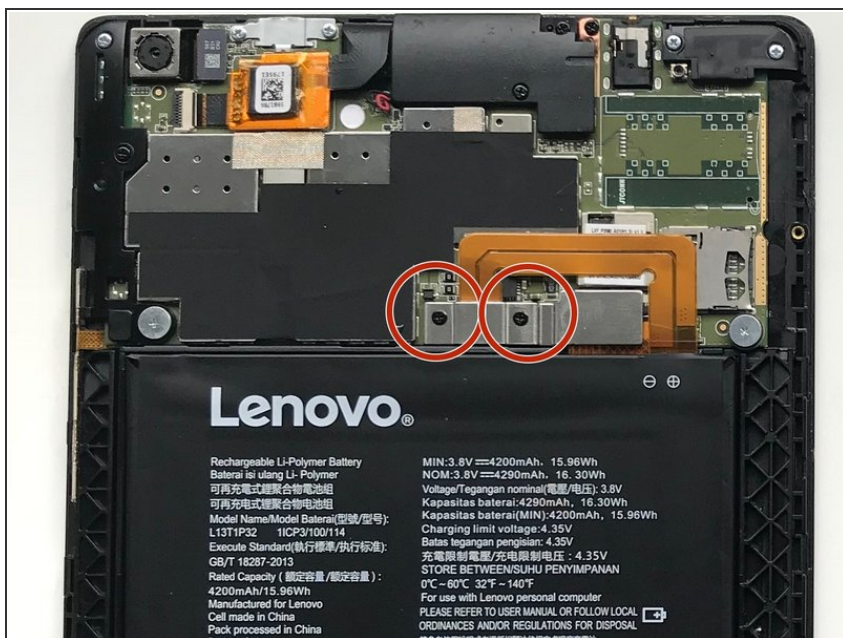
- [Prying and Opening Tool Assortment](#) (1)
 - [64 Bit Driver Kit](#) (1)
 - [Metal Spudger](#) (1)
-

Step 1 — Battery



- Remove the back cover by prying it open with the metal spudger tool.

Step 2



- Remove the two screws with a PH000 head screwdriver.
- ☑ Keep all your screws in one place.

Step 3



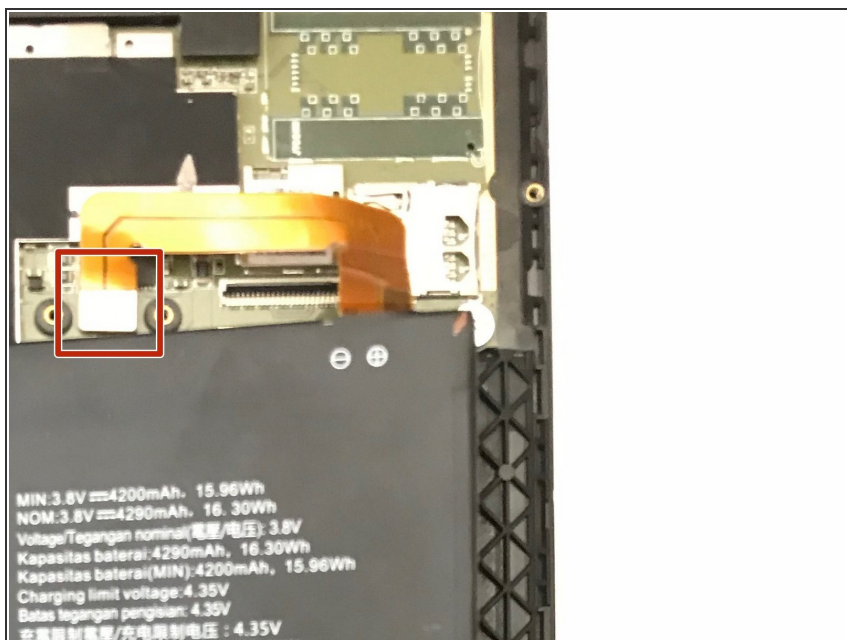
- Remove the metal piece.
- ☑ Keep this piece safe, as you will need it to reassemble the device again.

Step 4



- Remove the battery by lifting it up using a plastic spudger.

Step 5



- Disconnect the cable from the connection.
- ⚠ Be careful not to tear or bend the cable.

To reassemble your device, follow these instructions in reverse order.