

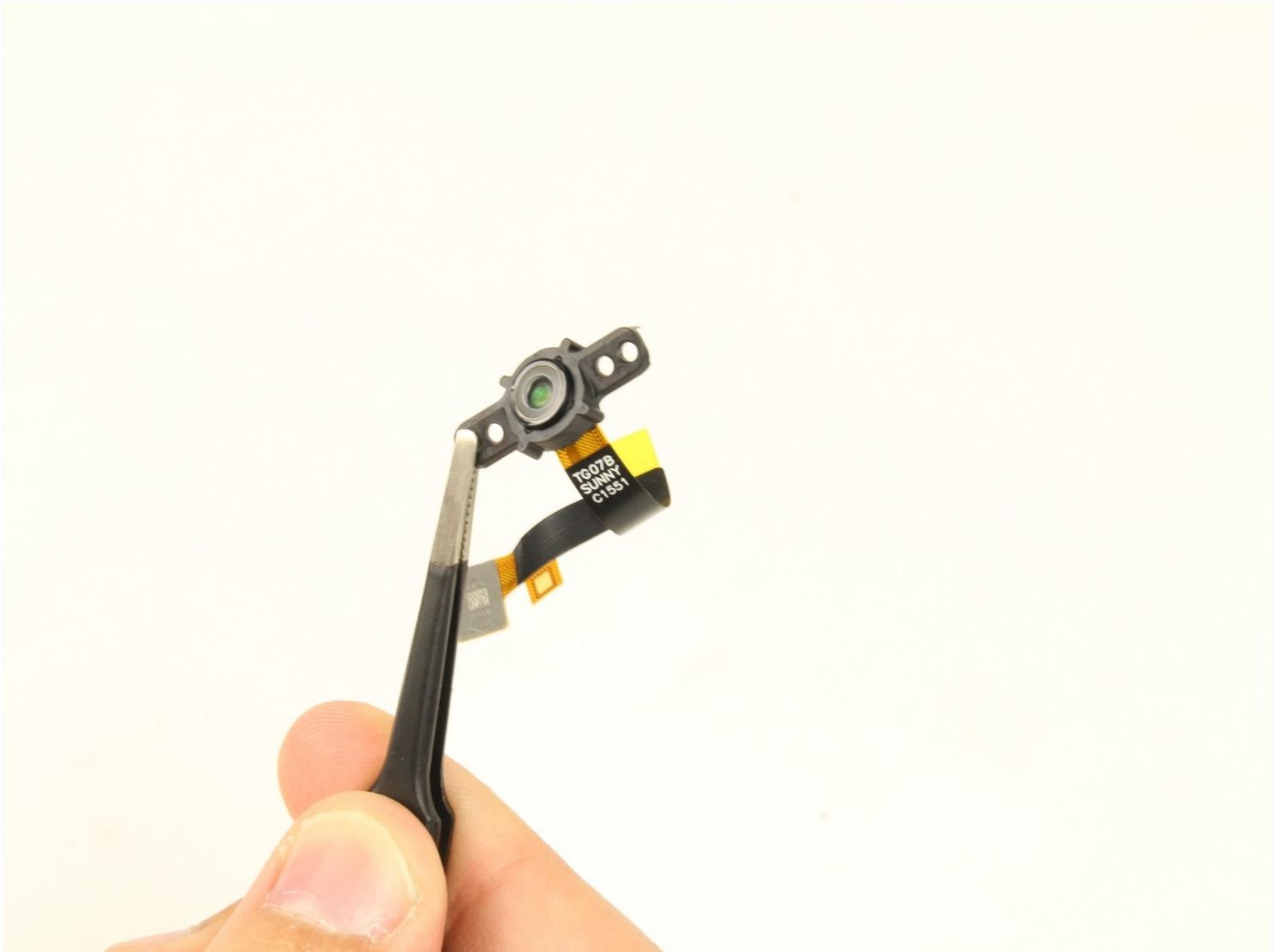


Archived

HTC Vive Camera Replacement

The HTC Vive's camera may send distorted or...

Written By: Caleb Watts



INTRODUCTION

The HTC Vive's camera may send distorted or inaccurate images to the Vive. This guide will show you how to replace the Vive's camera.

TOOLS:

[T6 Torx Screwdriver](#) (1)

[Prying and Opening Tool Assortment](#) (1)

[Phillips #00 Screwdriver](#) (1)

[Tweezers](#) (1)

Step 1 — Release the upper head strap



 Be sure to power down and disconnect your Vive before beginning.

- Pull the hook-and-loop (Velcro) closure at the top of the head strap apart to release the top of the head strap.

Step 2 — Remove the upper head strap



- Slide the top part of the head strap through its metal loop on the headset to remove it.

Step 3 — Remove the right side of the head strap



- Pull the hook-and-loop closure at the right side of the head strap apart to release the right side of the head strap.
- Slide the right side of the head strap through its metal loop to remove it.

Step 4 — Remove the left side of the head strap



- Pull the hook-and-loop closure at the left side of the head strap apart to release the left side of the head strap.
- Slide the left side of the head strap through its metal loop to remove it.

Step 5 — Remove the head strap



- Slide the head strap along the cable, away from the Vive.
- When the head strap comes to the end of the cable, gently slide it over the plugs and remove it.

Step 6 — Unscrew the head strap mounts



⚠ Be sure to power down and disconnect your Vive before beginning.

- Use a T5 Torx driver to remove the two 12 mm-long screws securing the head strap mounts on either side of the headset.
 - ① For some devices, a T6 Torx driver may work better.
- ① The mounts may fall off when the screws are removed, so be careful not to lose any parts.

Step 7 — Remove the head strap mounts



- Remove both head strap mounts.

Step 8 — Remove the facerest



- Slide the facerest straight away from the headset to remove it.

Step 9 — Unscrew the outer shell



- Use tweezers to remove the small stickers over the four screws securing the outer shell.
- Use a T5 Torx driver to remove the four 3.4 mm-long screws securing the outer shell.

Step 10 — Remove the outer shell



- Use the flat end of a spudger to pry up the top edge of the right half of the outer shell, behind the component cover and near the seam in the center, until it is unclipped from the headset.

Step 11



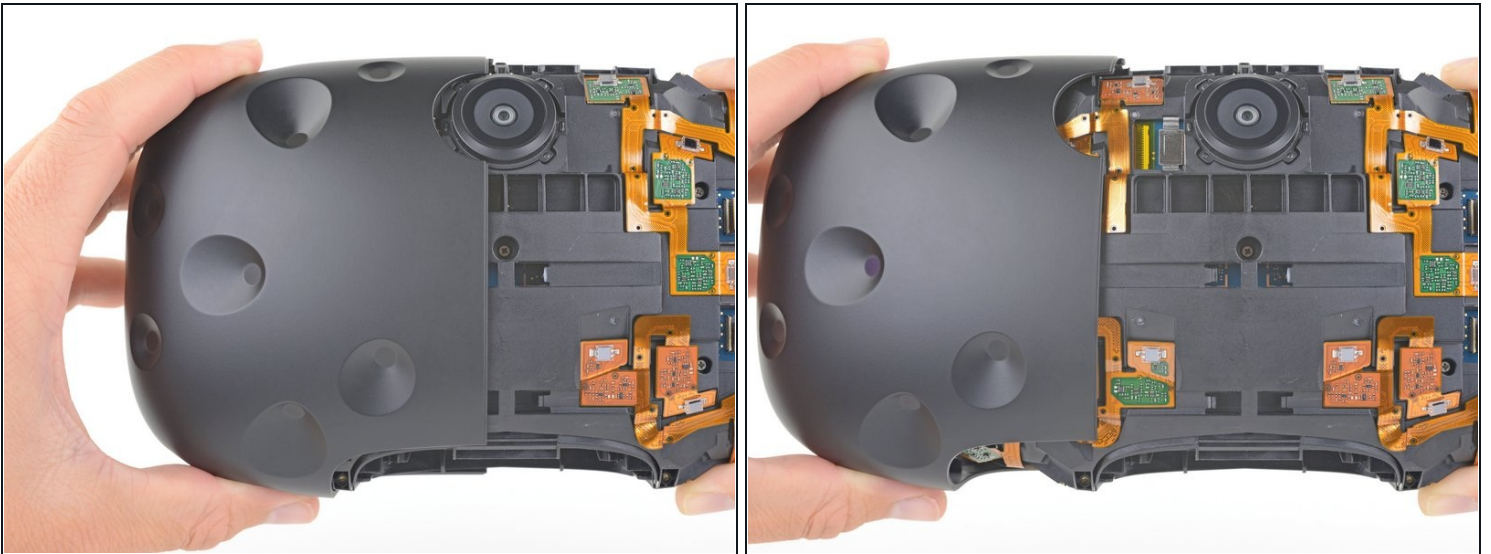
- Grasp the right half the outer shell and pull it to the right and toward the front of the headset until you feel the clips on the front of the cover release.
- If the shell is difficult to remove, try prying along the seam with the flat end of a spudger to release the clips.

Step 12



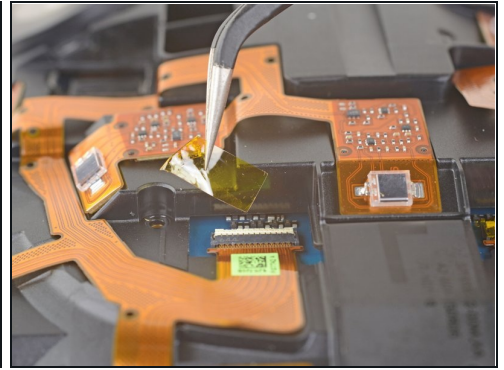
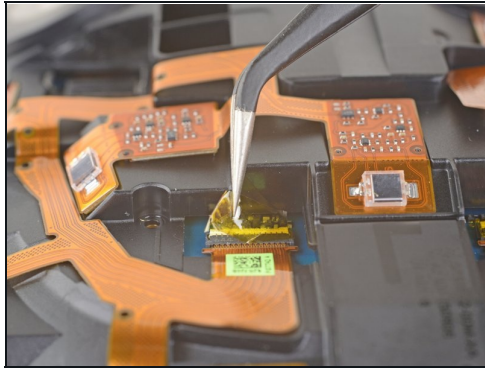
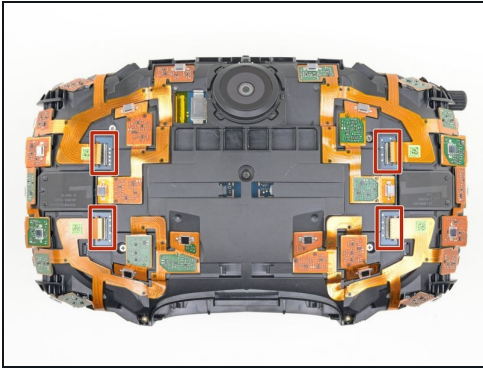
- Slide the right side of the outer shell to the right and off of the headset.

Step 13



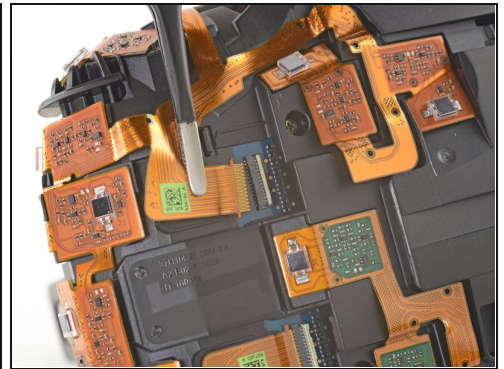
- Repeat the last three steps for the left side of the outer shell and remove it.

Step 14 — Disconnect the sensor array cables



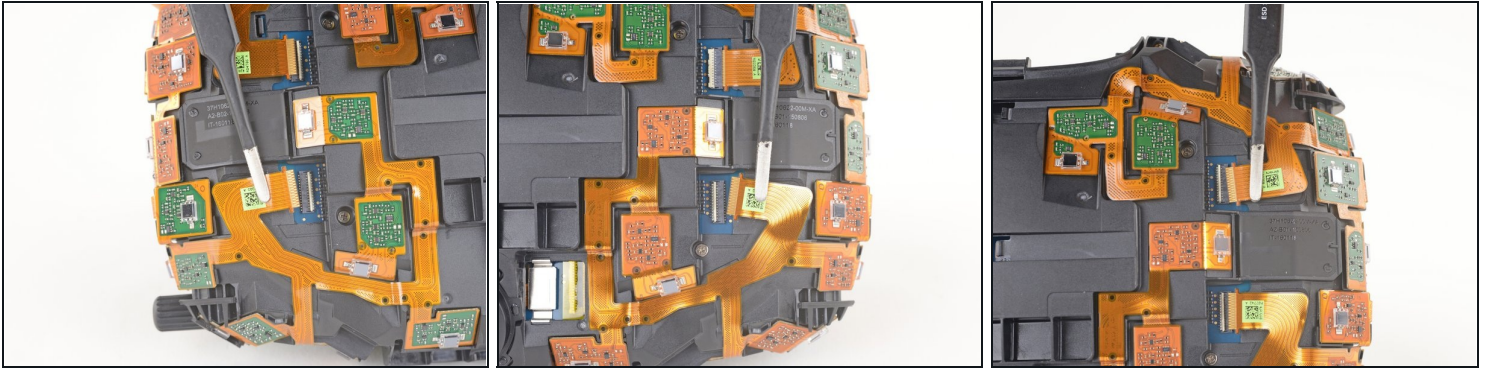
- Use tweezers to remove the clear tape over all four of the sensor array cable connectors.

Step 15



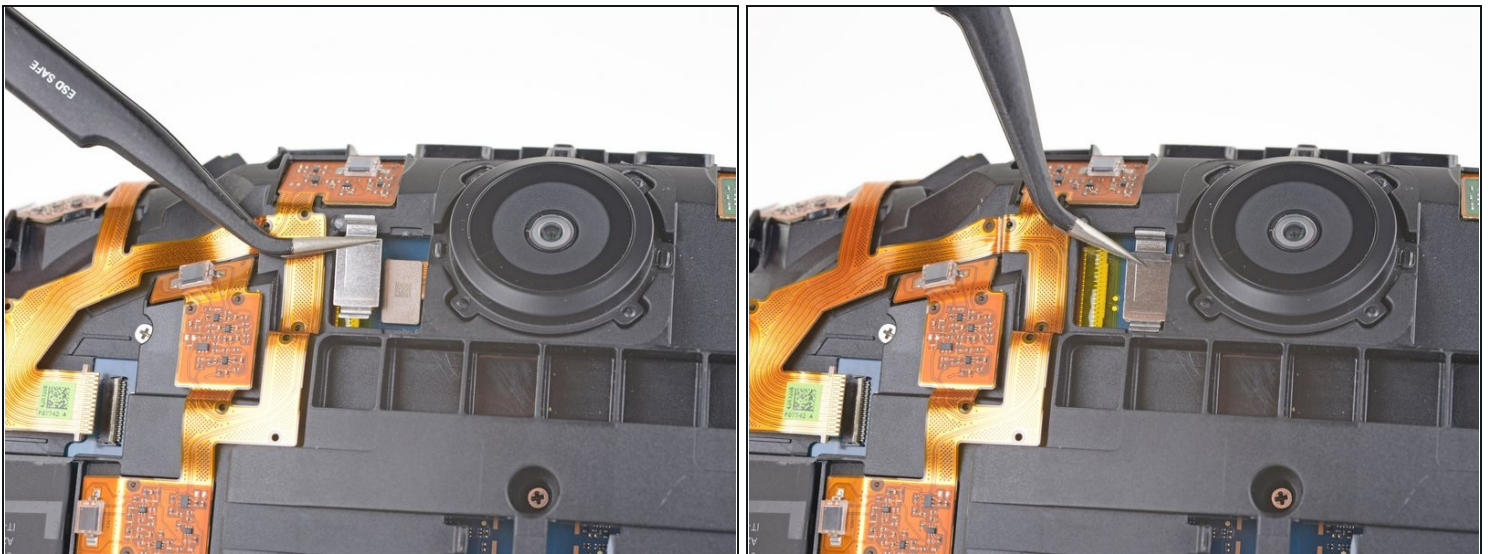
- Use the pointed end of a spudger to flip up the small locking flap on one of the sensor array [ZIF connectors](#).
- Slide the cable straight out of its socket on the motherboard.

Step 16



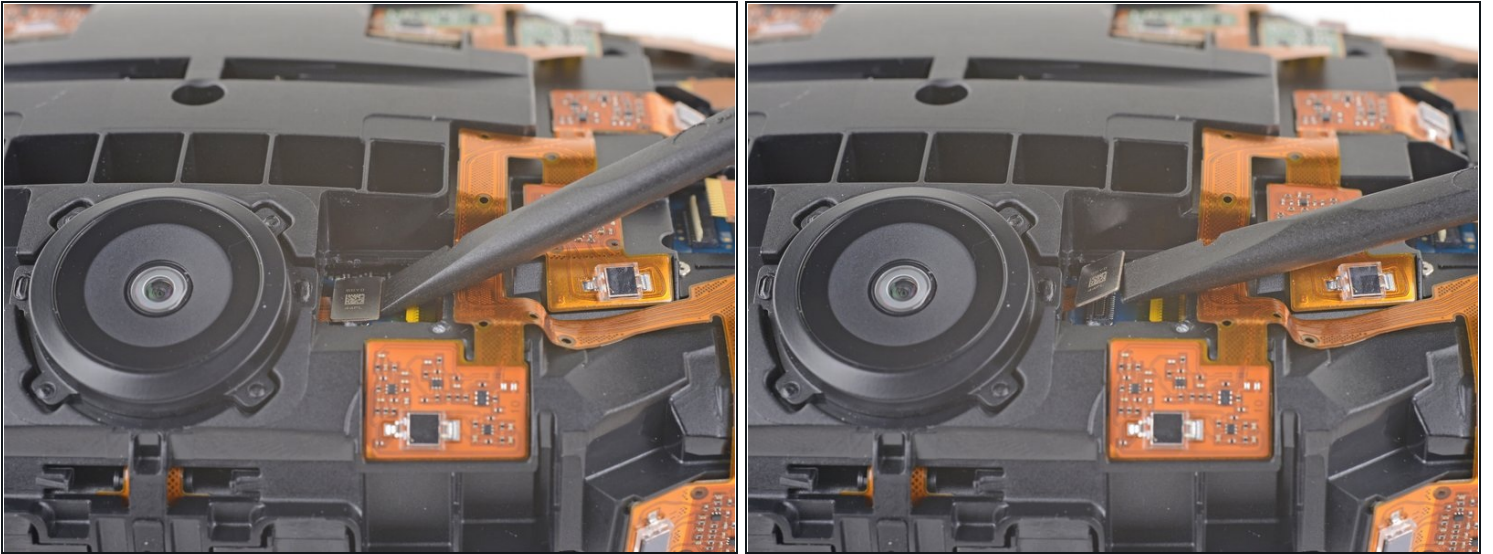
- Repeat the previous step for the remaining three sensor array cables to disconnect the remaining cables.

Step 17



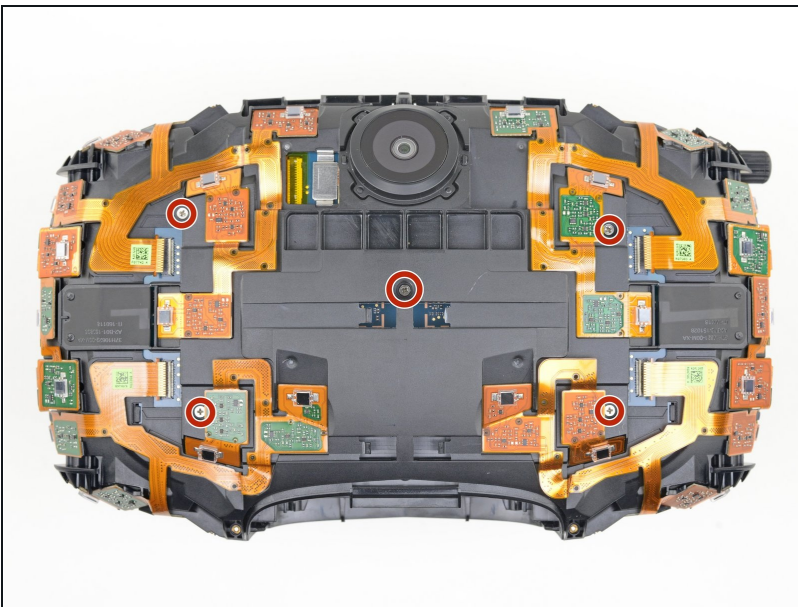
- Use tweezers or a spudger to pry up the camera cable cover and remove it.

Step 18



- Use the flat end of a spudger to pry the camera cable connector straight up from its socket on the motherboard.

Step 19 — Unscrew the sensor array



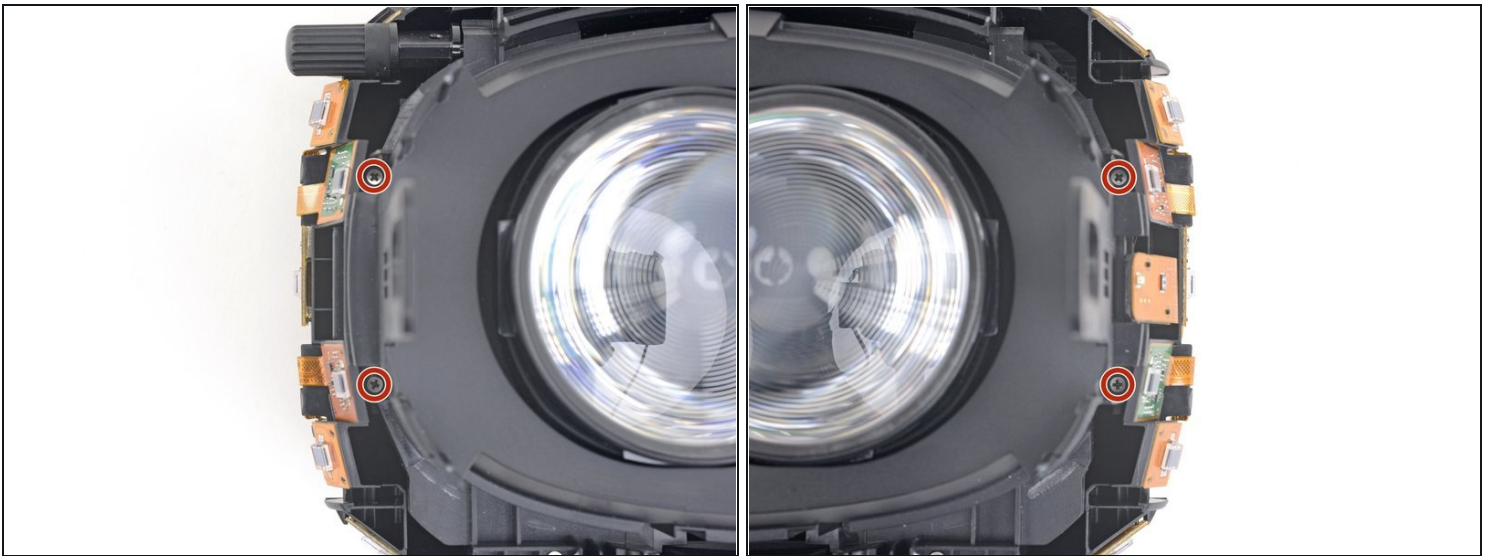
- Use a PH000 driver to remove the five 3.9 mm screws securing the sensor array.

Step 20



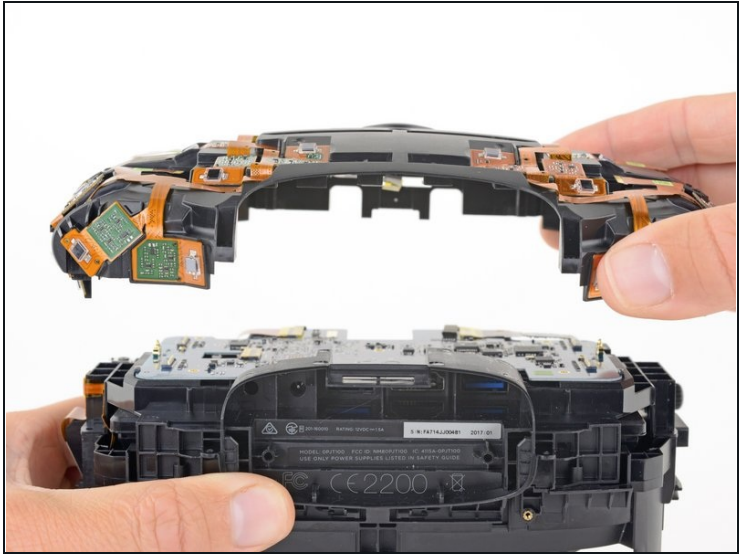
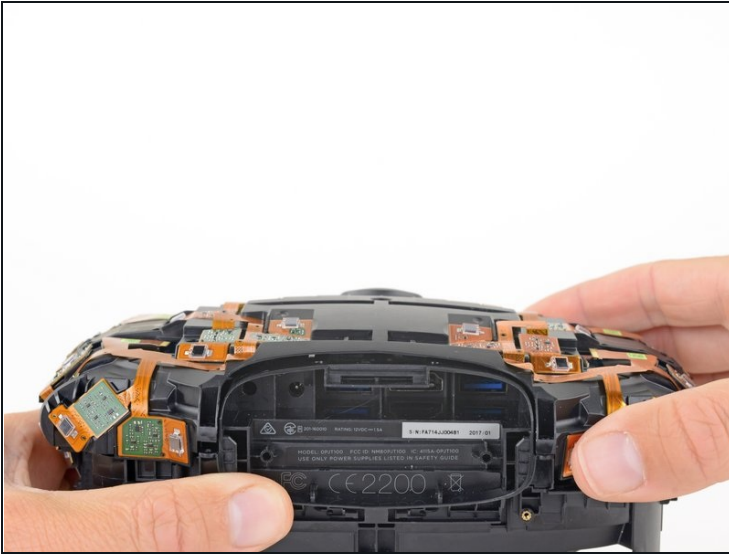
- Use a PH000 driver to remove the four 3.9 mm screws securing the sensor array.

Step 21



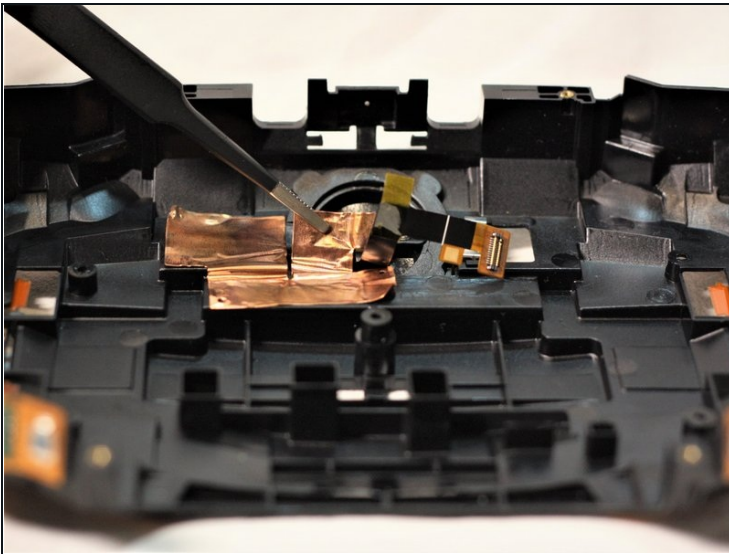
- Use a PH000 driver to remove the four 3.9 mm screws securing the sensor array.
 - ⓘ You'll need a [narrow, long-shaft driver](#) to reach these screws.

Step 22 — Remove the sensor array



- Lift the sensor array away from the headset to remove it.

Step 23 — Camera



- Flip the sensor array over 180 degrees.
- Using tweezers, move the copper tape covering the camera to the side so you can see the screws holding the camera.

Step 24



- Remove the two 2mm #00 Philips screws securing the camera.
 - Use tweezers to pull the now freed camera from its slot.
-

To reassemble your device, follow these instructions in reverse order.