



Fast Fix Screen Replacement

Replace a Dell Inspiron 15-3521 Screen.

Written By: Carl Kangas



INTRODUCTION

This guide can be used to remove and replace a screen on a Dell Inspiron 15-3521. The tools needed are a small Phillips screwdriver, and a small flat screwdriver or like prying device.



TOOLS:

- [Phillips #0 Screwdriver](#) (1)
- [Flathead Screwdriver](#) (1)



PARTS:

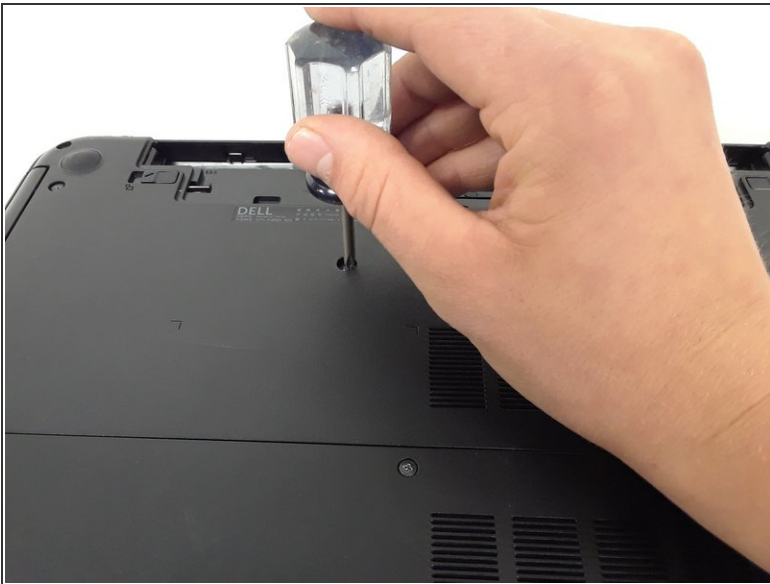
- [LCD Screen for Dell Inspiron 15-3521](#) (1)

Step 1 — Screen



- Slide both battery latches to release cover.
- Remove battery.

Step 2



- Remove the M2.5 X 5mm phillips screw for the CD drive.
- Remove the CD drive.

Step 3

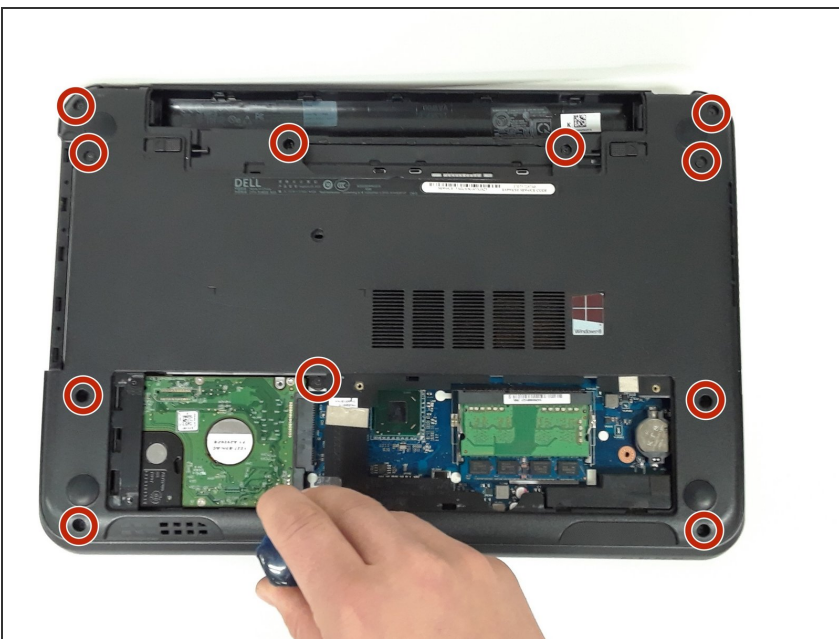


- Loosen 2 screws on access door.

i They cannot be removed

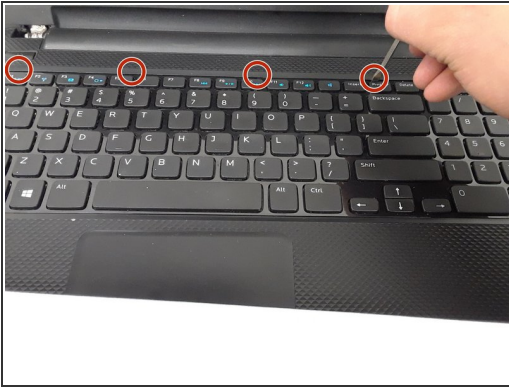
- Remove the access door.

Step 4



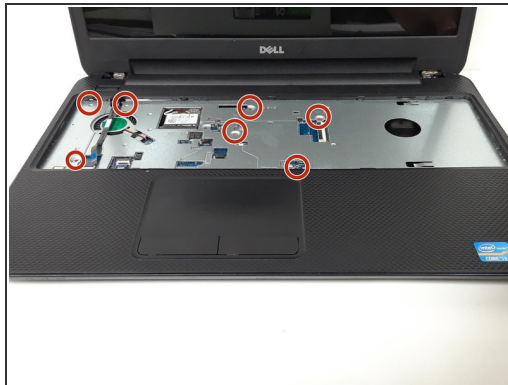
- Remove 12 M2.5 X 5MM Phillips bottom palm rest screws.

Step 5



- Use a small screwdriver to press in the keyboard latches.
- Remove the keyboard.
- Unplug the keyboard cable at the ZIF connection.

Step 6



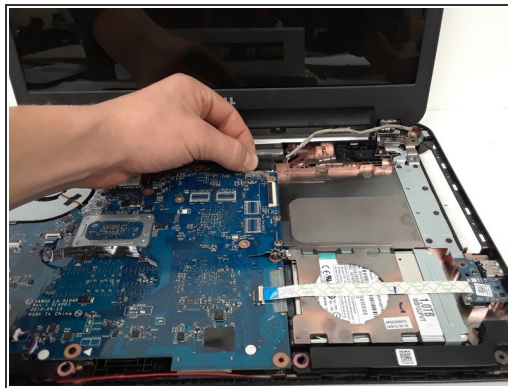
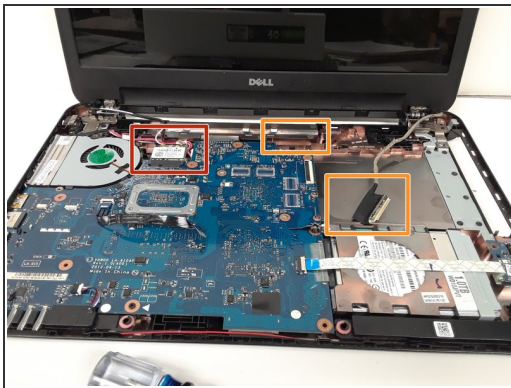
- Remove the palm-rest cable by releasing the ZIF latch and pulling the wire out.
- Remove 5 M2.5 X 5mm Phillips and 2 M2 X 3mm Phillips palm-rest screws.

Step 7



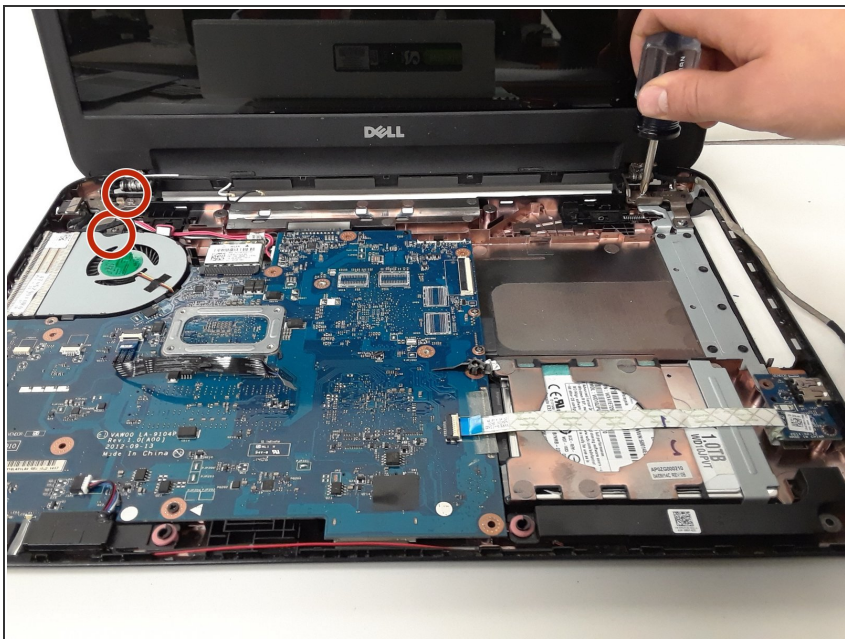
- Use a small flat screwdriver to pry the palm-rest off of the computer.

Step 8



- Remove the wireless antenna
- Remove the LCD cable

Step 9



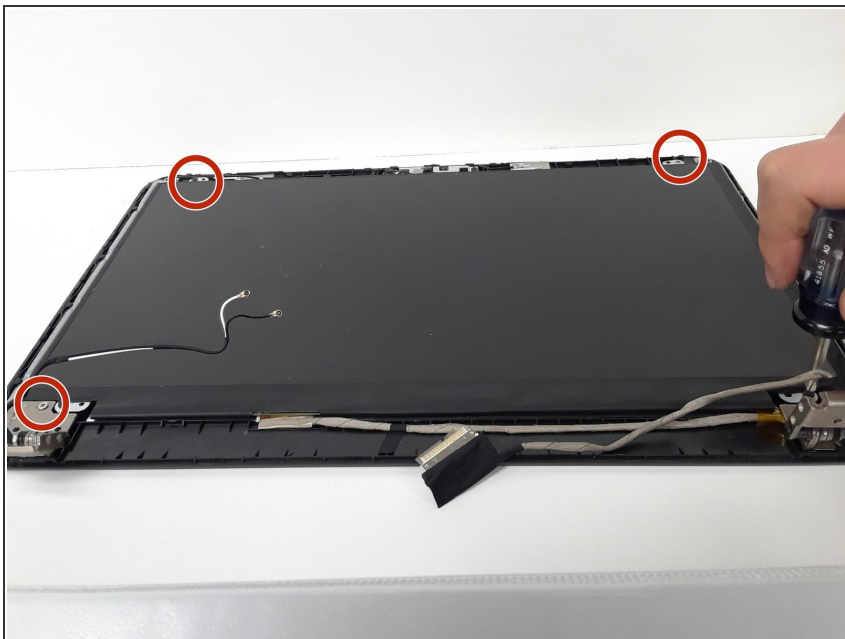
- Remove the 1 M2.5 x 5mm Phillips left hinge screw and 2 M2.5 x 5mm Phillips right hinge screw.

Step 10



- Pry off the LCD bevel using a small flat screwdriver.

Step 11



- Remove the 4 M2 X 3mm Philips LCD screws.

Step 12



- Unplug the screen cable and remove the screen.

To reassemble your device, follow these instructions in reverse order.