



# iPhone 7 Plus LCD and Digitizer Replacement

For an easier repair, use our fix kit and...

Written By: Jeff Suovanen



# INTRODUCTION

For an easier repair, use our [fix kit](#) and follow [this shorter guide](#) to replace your iPhone's entire screen.

For more advanced fixers, this guide will help you replace *only* the iPhone 7 Plus LCD and digitizer assembly (a.k.a. the bare “front panel”). This requires you to transfer several components from your original screen to the new one before installing it—including the [front-facing camera](#), [earpiece speaker](#), [LCD shield plate](#), and home/Touch ID sensor assembly.

For all screen/display repairs, **it's important to carefully transfer the original home/Touch ID sensor onto the new display in order for it to function.** The solid state home button is paired to its original logic board by Apple, so replacing it will render it unusable.



## TOOLS:

- [Anti-Clamp](#) (1)
- [P2 Pentalobe Screwdriver iPhone](#) (1)
- [iOpener](#) (1)
- [Suction Handle](#) (1)
- [iFixit Opening Picks \(Set of 6\)](#) (1)
- [Spudger](#) (1)
- [Tri-point Y000 Screwdriver](#) (1)
- [Tweezers](#) (1)
- [Phillips #000 Screwdriver](#) (1)
- [iFixit Opening Tool](#) (1)

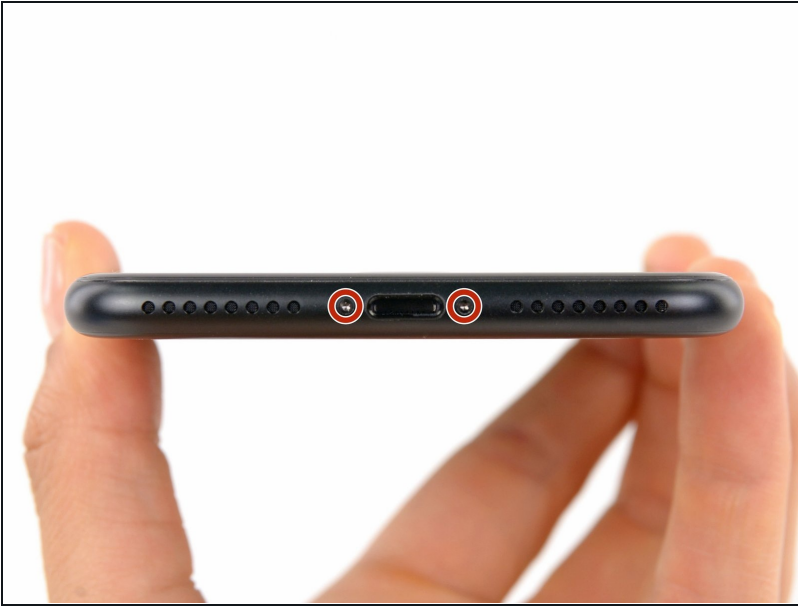


## PARTS:

- [iPhone 7 Plus LCD and Digitizer](#) (1)
- [iPhone 7 Plus LCD Shield Plate Sticker](#) (1)
- [iPhone 7 Plus Display Assembly Adhesive](#) (1)

---

## Step 1 — Pentalobe Screws



⚠ Before you begin, discharge your iPhone battery below 25%. A charged lithium-ion battery can catch fire and/or explode if accidentally punctured.

- Power off your iPhone before beginning disassembly.
- Remove the two 3.4 mm pentalobe screws at the bottom edge of the iPhone.
- ⓘ Opening the iPhone's display will compromise its waterproof seals. Have [replacement seals](#) ready before you proceed past this step, or take care to avoid liquid exposure if you reassemble your iPhone without replacing the seals.

## Step 2 — Mark your opening picks



- ① If inserted too far, an opening pick can damage your device. Follow this step to mark your pick and prevent damage.
- Measure 3 mm from the tip and mark the opening pick with a permanent marker.
  - ① You can also mark the other corners of the pick with different measurements.
  - ① Alternatively, [tape a coin to a pick](#) 3 mm from the tip.



### Step 3 — Taping Over The Display



- If your display glass is cracked, keep further breakage contained and prevent bodily harm during your repair by taping over the glass.
- Lay overlapping strips of clear packing tape over the iPhone's display until the whole face is covered.
  - ⓘ This will keep glass shards contained and provide structural integrity when prying and lifting the display.

**⚠ Wear safety glasses to protect your eyes from any glass shaken free during the repair.**

- If the broken glass makes it difficult to get a suction cup to stick in the next few steps, try folding a strong piece of tape (such as duct tape) into a handle and lifting the display with that instead.

## Step 4 — Anti-Clamp instructions



- ① The next three steps demonstrate the [Anti-Clamp](#), a tool we designed to make the opening procedure easier. **If you aren't using the Anti-Clamp, skip down three steps for an alternate method.**
- ① For complete instructions on how to use the Anti-Clamp, [check out this guide](#).
- Pull the blue handle backwards to unlock the Anti-Clamp's arms.
- Slide the arms over either the left or right edge of your iPhone.
- Position the suction cups near the bottom edge of the iPhone just above the home button—one on the front, and one on the back.
- Squeeze the cups together to apply suction to the desired area.
- ① If you find that the surface of your iPhone is too slippery for the Anti-Clamp to hold onto, you can [use tape](#) to create a grippier surface.

## Step 5



- Pull the blue handle forwards to lock the arms.
- Turn the handle clockwise 360 degrees or until the cups start to stretch.
- Make sure the suction cups remain aligned with each other. If they begin to slip out of alignment, loosen the suction cups slightly and realign the arms.

## Step 6



- [Heat an iOpener](#) and thread it through the arms of the Anti-Clamp.
  - ⓘ You can also use a [hair dryer](#), [heat gun](#), or hot plate—but extreme heat can damage the display and/or internal battery, so proceed with care.
- Fold the iOpener so it lays on the bottom edge of the iPhone.
- Wait one minute to give the adhesive a chance to release and present an opening gap.
- Insert an opening pick into the gap.
  - ⓘ If the Anti-Clamp doesn't create a sufficient gap, apply more heat to the area and rotate the handle a quarter turn.
- ⚠ **Don't crank more than a quarter turn at a time, and wait one minute between turns. Let the Anti-Clamp and time do the work for you.**
- **Skip the next three steps.**

## Step 7 — Heat the display



- ① The next three steps show how to separate the screen using a suction cup.
- Heating the lower edge of the iPhone will help soften the adhesive securing the display, making it easier to open.
- Use a hairdryer or [prepare an iOpener](#) and apply it to the lower edge of the phone for about 90 seconds in order to soften up the adhesive underneath.

## Step 8 — Separate the display



- Apply a suction cup to the lower half of the front panel, just above the home button.
  - ① Be sure the suction cup does not overlap with the home button, as this will prevent a seal from forming between the suction cup and front glass.



## Step 9



- Pull up on the suction cup with firm, constant pressure to create a slight gap between the screen and the frame.
  - Insert an opening pick into the gap.
- ⓘ The watertight adhesive holding the screen in place is very strong; creating this initial gap takes a significant amount of force. If you're having a hard time opening a gap, apply more heat, and gently rock the screen up and down to weaken the adhesive until you create enough of a gap to insert your tool.

## Step 10



- Slide the opening pick up the left edge of the phone starting at the lower edge and moving towards the volume control buttons and silent switch, breaking up the adhesive holding the display in place.
- Stop near the top left corner of the display.

⚠ Do not try to pry the top edge of the display away from the rear case, as it is held in place by plastic clips that may break.

## Step 11 — Screen information



⚠ There are delicate cables along the right edge of your iPhone. **Don't insert your pick here,** as you may damage the cables.

## Step 12



- Re-insert your tool at the lower right corner of the iPhone, and slide it around the corner and up the right side of the phone to separate the adhesive.

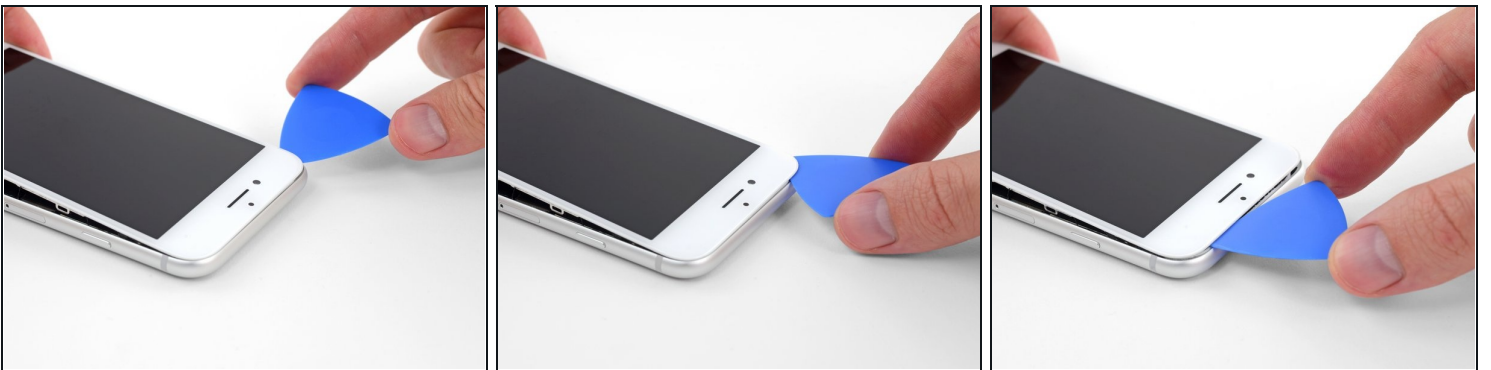
⚠ Don't insert your pick more than 3 mm, as you may damage the display cables.

## Step 13



- Gently pull up on the suction cup to lift up the bottom edge of the display.  
**⚠ Do not raise the display more than 15° or you'll risk straining or tearing the ribbon cables connecting the display.**
- Pull on the small nub on the suction cup to remove it from the front panel.

## Step 14



- Slide an opening pick underneath the display around the top left corner and along the top edge of the phone to loosen the last of the adhesive.



## Step 15



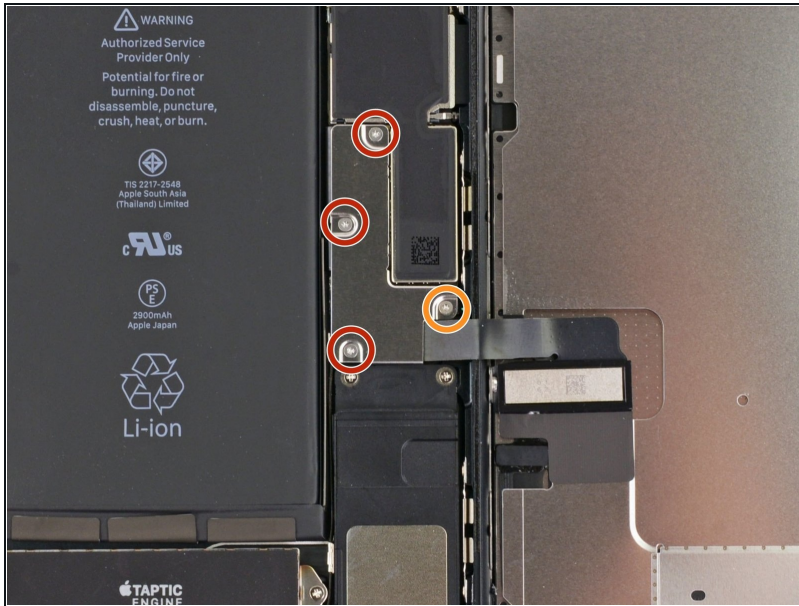
- Slide the display assembly slightly down (away from the top edge of the phone) to disengage the clips holding it to the rear case.

## Step 16



- Open the iPhone by swinging the display up from the left side, like the back cover of a book.  
**⚠ Don't try to fully separate the display yet, as several fragile ribbon cables still connect it to the iPhone's logic board.**
- Lean the display against something to keep it propped up while you're working on the phone.

## Step 17 — Battery Disconnection



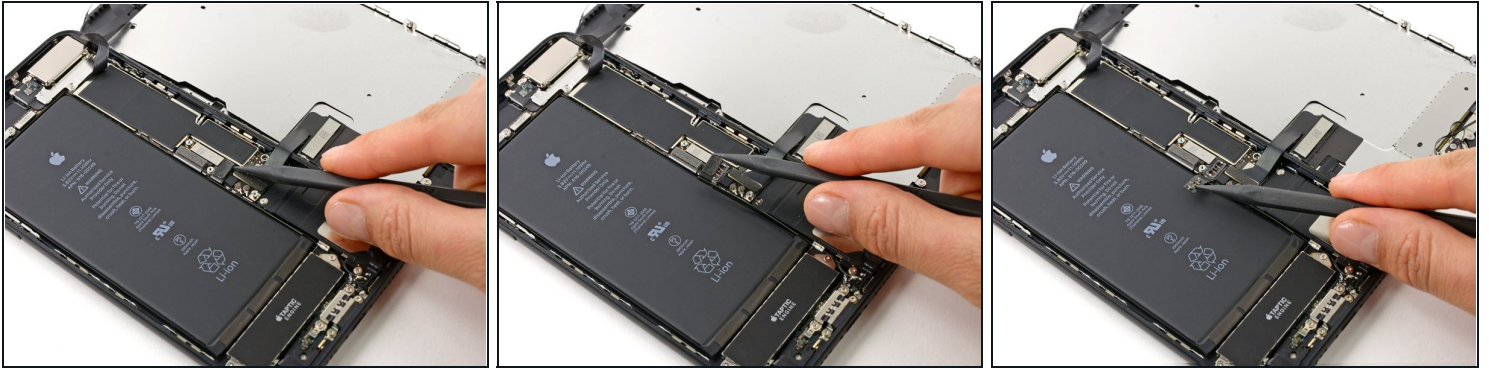
- Remove the following four tri-point Y000 screws securing the lower display cable bracket to the logic board:
  - Three 1.2 mm screws
  - One 2.6 mm screw

## Step 18



- Remove the lower display cable bracket.

## Step 19



- Use the point of a spudger to lift the battery connector out of its socket on the logic board.
- ① Bend the connector cable up slightly to prevent it from making contact with the socket and providing power to the phone.

## Step 20 — Display Assembly



**⚠ Make sure the battery is disconnected before you disconnect or reconnect the cables in this step.**

- Use the flat end of a spudger or a fingernail to disconnect the two lower display connectors by prying them straight up from their sockets on the logic board.
- ☑ To re-attach press connectors, press down on one end until it clicks into place, then repeat on the other end. Do not press down on the middle. If the connector is even slightly misaligned, the connector can bend, causing permanent damage.
- ☑ If you have a blank screen, white lines on the display, or partial or complete lack of touch response after reassembling your phone, try disconnecting and carefully reconnecting both of these cables and make sure they are fully seated.

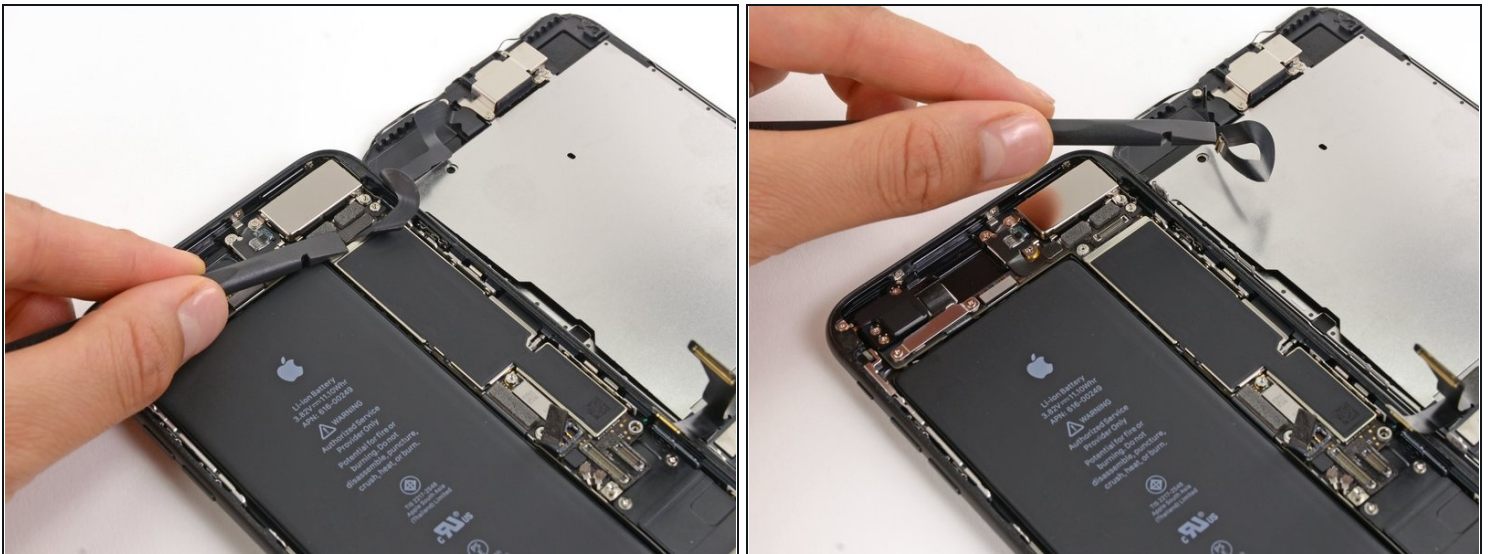


## Step 21



- Remove the three tri-point Y000 screws securing the bracket over the front panel sensor assembly connector:
  - One 1.3 mm screw
  - Two 1.0 mm screws
- Remove the bracket.

## Step 22



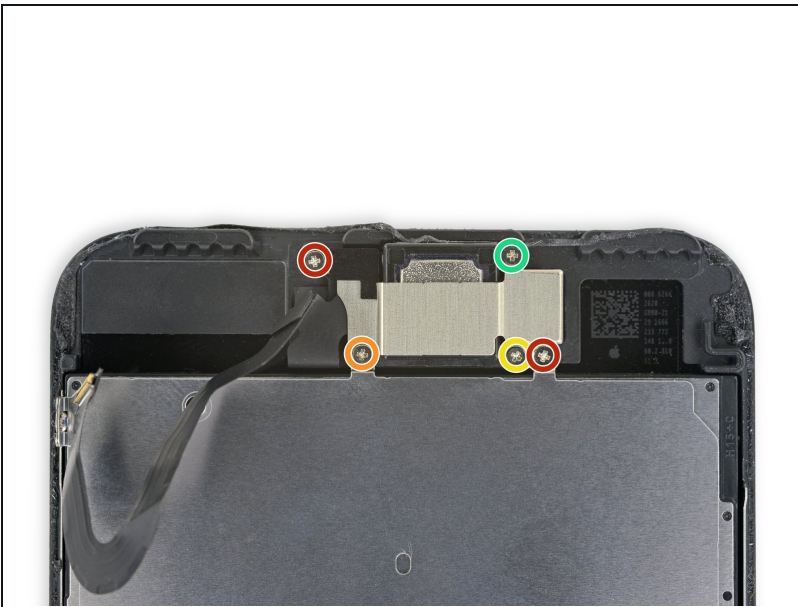
- Disconnect the front panel sensor assembly connector from its socket on the logic board.
- ☑ This press connector should also be reconnected one end at a time to minimize the risk of bending.

## Step 23



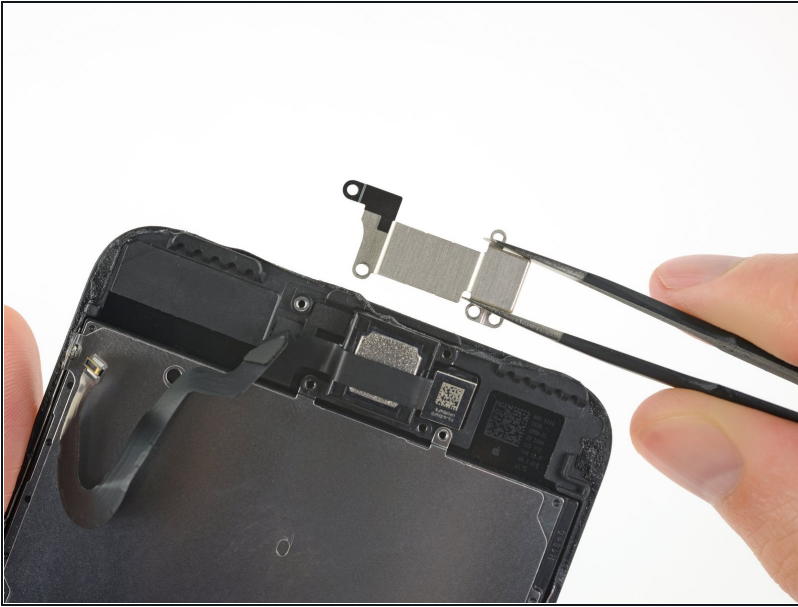
- Remove the display assembly.
- ★ During reassembly, pause here if you wish to [replace the adhesive around the edges of the display](#).

## Step 24 — Earpiece Speaker



- Remove the five Phillips screws securing the earpiece speaker bracket:
  - Two 1.8 mm screws
  - One 2.3 mm screw
  - One 2.4 mm screw
  - One 2.8 mm screw

## Step 25



- Remove the earpiece speaker bracket.

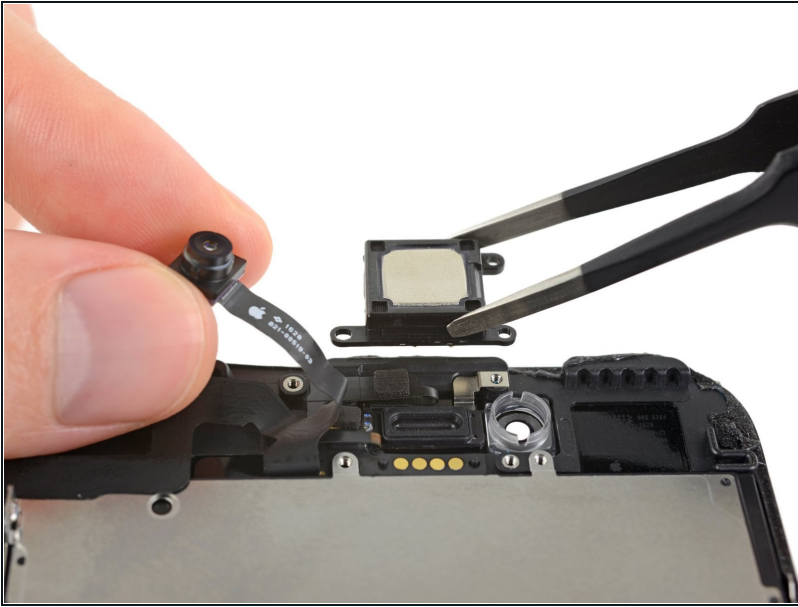
## Step 26



- Use the flat end of a spudger to lift the front-facing camera from its housing.
- Gently bend the camera ribbon cable to the side to clear the way to the earpiece speaker underneath.



## Step 27



- Remove the earpiece speaker.

⚠ Don't touch the four spring contacts with your fingers—your skin oils may cause a malfunction. If accidentally touched, clean the contacts gently with isopropyl alcohol (90% or higher).

## Step 28 — Front Camera and Sensor Cable



- Gently fold the camera and attached ribbon cable toward the bottom of the iPhone to allow access to the components underneath.



## Step 29



⚠ The sensors on this step are fragile. To increase your chances of removing them without damage, use your iOpener or hair dryer to apply heat to the upper portion of the display before you proceed. Alternatively, add a drop or two of isopropyl alcohol and let it penetrate under the sensors before you pry them up.

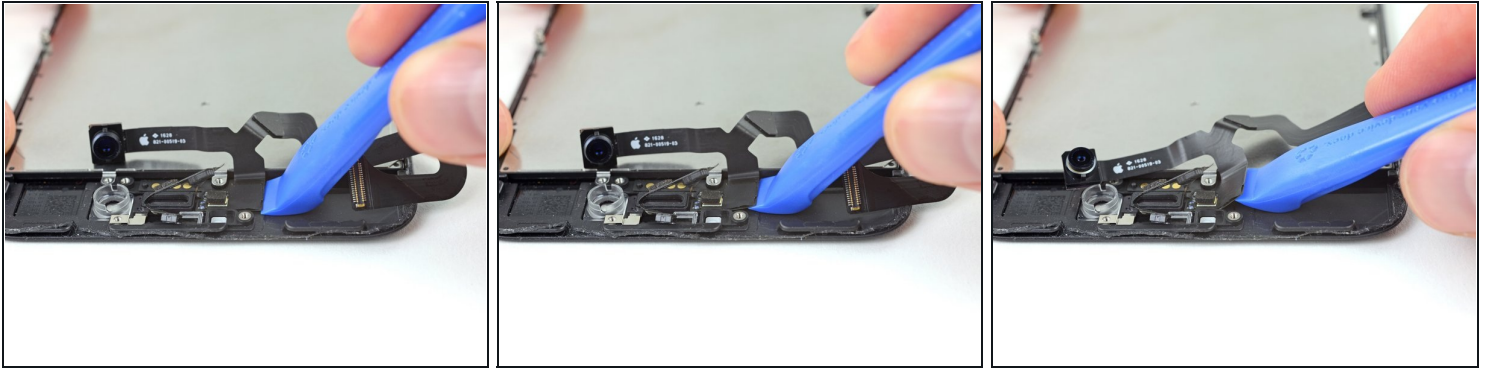
- Slide a spudger under the ambient light sensor flex cable, and lift the sensor out of its housing.

## Step 30



- Slide the tip of a spudger underneath the proximity sensor flex cable, and lift the sensor out of its housing.

## Step 31



- Insert the sharp edge of an iFixit opening tool underneath the camera assembly's flex cable, on the opposite side from the front-facing camera.  
⚠ If necessary, use an iOpener or hair dryer to heat the top portion of the display and soften the adhesive securing the flex cable.
- Pry up to separate the edge of the flex cable from the back of the display.

## Step 32



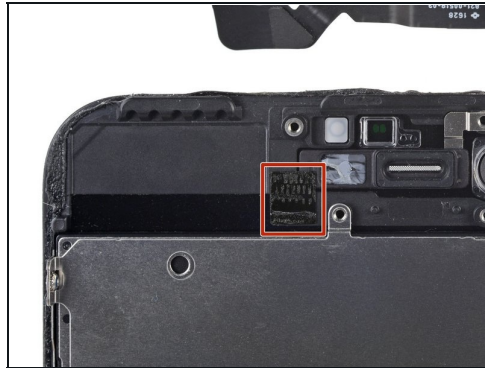
- Insert the point of a spudger underneath the same portion of the flex cable that you separated in the previous step.
- Continue separating the remainder of the flex cable, pushing the spudger toward the row of circular gold earpiece speaker contacts.

## Step 33



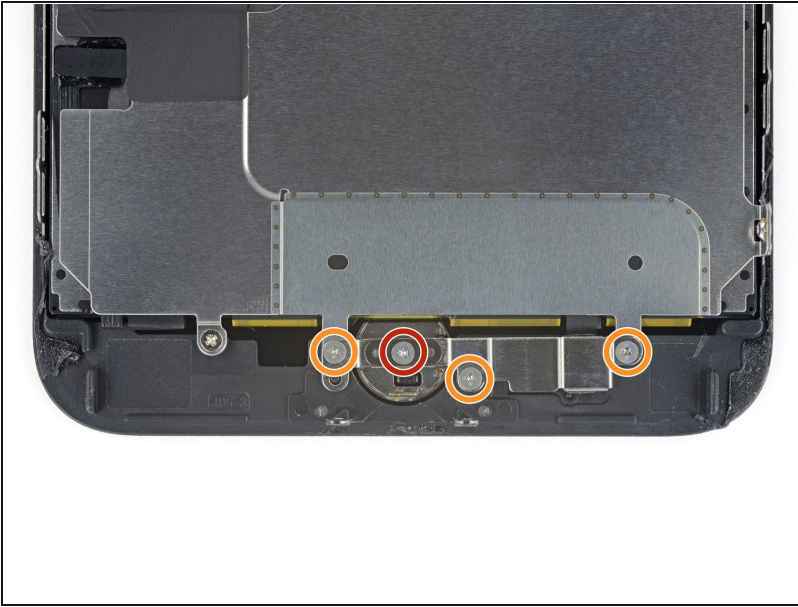
- Continue using your spudger to carefully separate the last of the flex cable from the back of the display.

## Step 34



- Remove the front camera and sensor cable assembly.
- A piece of black double-sided insulating tape lies between the display and three rows of copper contacts on the back of the camera/sensor cable. It may remain stuck to the display, or it may come off with the cable.
  - ☑ When reassembling, verify the tape is in place, or else cover the contacts on the back of the cable with an appropriate tape, such as Kapton tape.

## Step 35 — Home/Touch ID Sensor



- Remove the four Y000 screws securing the bracket over the home/Touch ID sensor:

- One 1.1 mm screw
- Three 1.3 mm screws

★ During reassembly, be careful not to overtighten these screws, or your home button may not work.

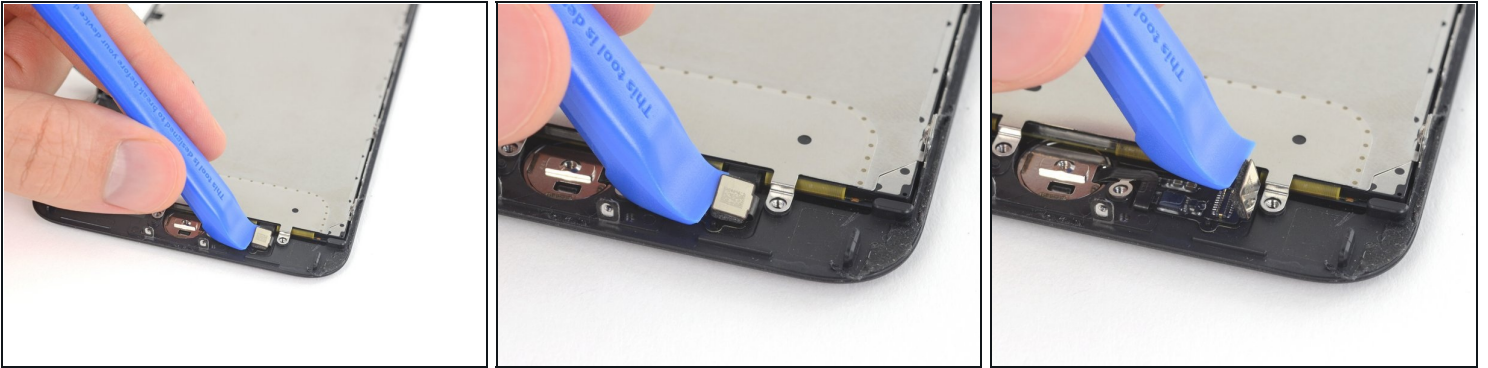
## Step 36



- Remove the bracket that secures the home/Touch ID sensor.

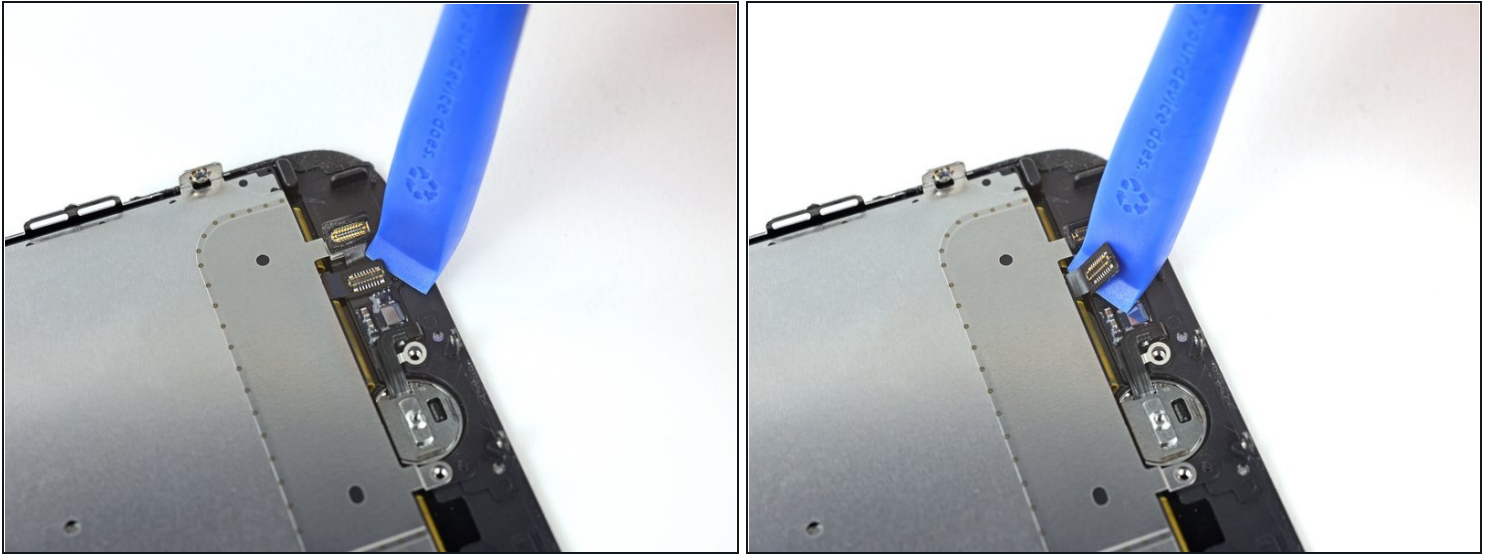


## Step 37



- Pry under the left edge of the home button cable connector to disconnect it from its socket.  
⚠ If the entire connector begins to flip up without separating, press down on the cable at the top edge of the connector with the flat of your spudger, while simultaneously prying up the left edge of the connector. Be very careful not to damage the cable or connector, or you will permanently disable the sensor.

## Step 38



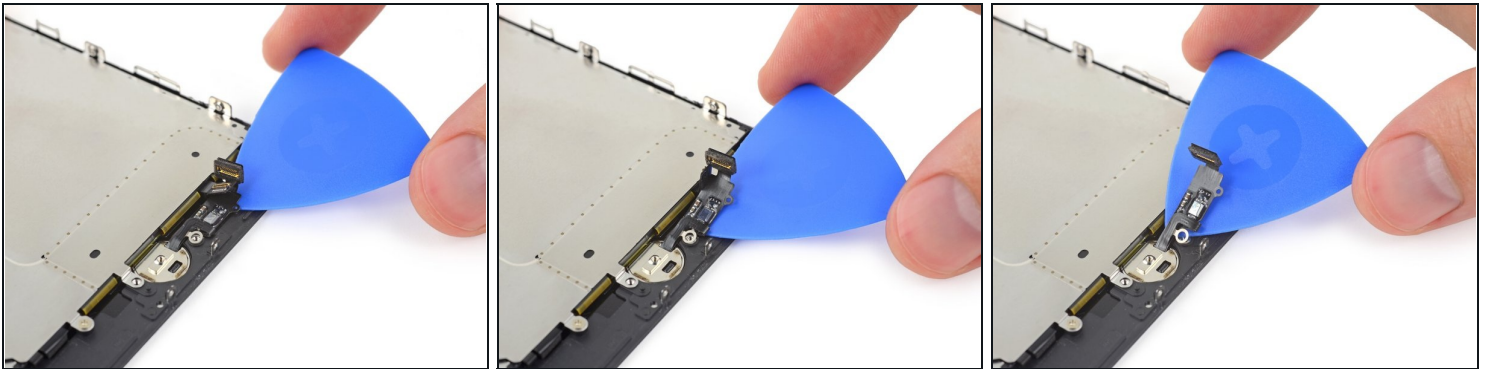
- Carefully pry up the underlying connector and move it out of the way of the home/Touch ID cable.
  - ⚠ It's very easy to damage your iPhone during this step. Work slowly and take care where you pry with your tool. If you damage the Touch ID hardware, it can only be replaced by Apple.
- If the connector doesn't pry up easily, use a hair dryer or iOpener to heat and soften the adhesive securing the connector, and then try again.
  - ⚠ Don't try to detach the connector completely—simply flip it up slightly so that the underlying home/Touch ID sensor cable can be removed.

## Step 39



- ⓘ Heating the area around the home/Touch ID sensor will help soften the adhesive holding its delicate cable in place, making it easier to remove safely.
- Flip the display assembly over. Use a hairdryer or [prepare an iOpener](#) and apply it to the lower edge of the display for about 90 seconds in order to soften up the adhesive underneath.

## Step 40



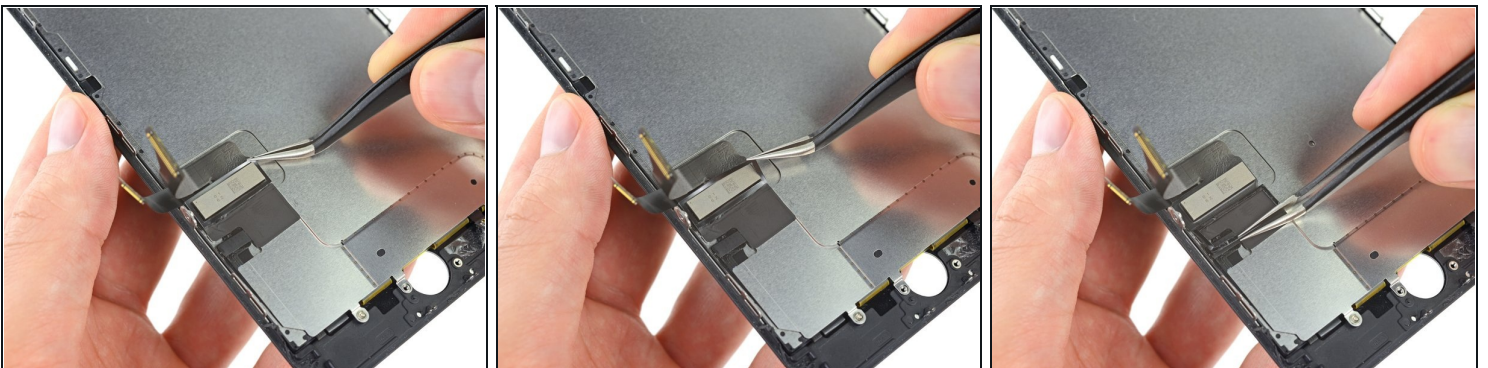
- Use an opening pick to gently separate the adhesive holding the home/Touch ID sensor cable to the back side of the display panel.

## Step 41



- Remove the home/Touch ID sensor assembly by lifting it through the front side of the display.
- ☑ To reinstall, first feed the cable through the hole in the front of the display.
- ☑ Your replacement part may come with an [extra Y000 screw](#) already installed right of the Home Button. Remove the unnecessary screw so that you can reinstall the home button bracket.
- ☑ [Follow this guide](#) to install replacement display adhesive on your screen.

## Step 42 — LCD and Digitizer



- Peel back the upper, rectangular portion of the LCD shield plate sticker to separate it from the flex cable underneath.
- ① You don't need to remove the sticker completely unless you intend to replace it.

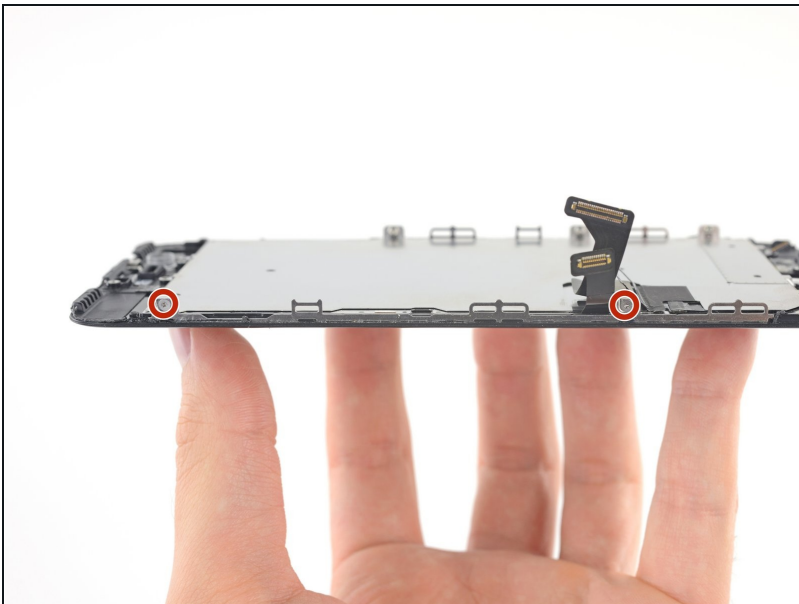


## Step 43



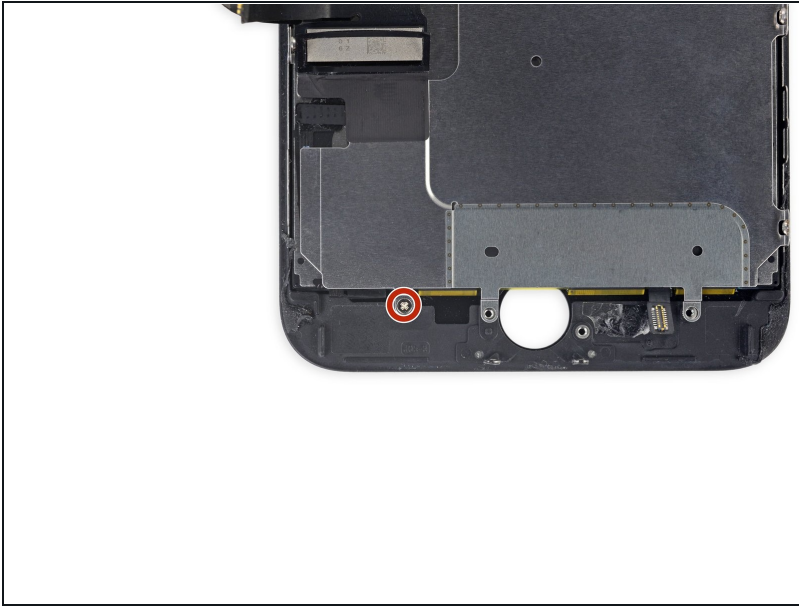
- Use a Y000 driver to remove three 1.1 mm screws from one side of the display EMI shield.
  - ① If you have trouble loosening these screws, press the driver harder onto the screw as you turn it. If necessary, use the flat edge of your spudger to brace each display clip from behind so you can apply more pressure to the screws, without bending the clips.

## Step 44



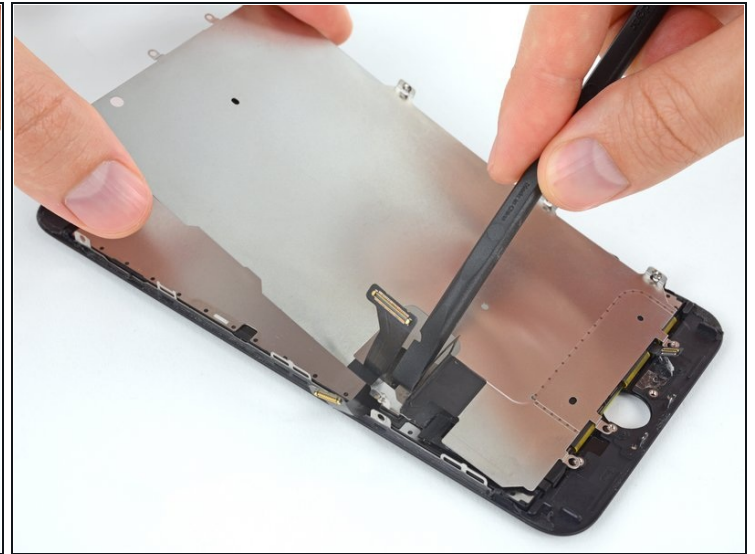
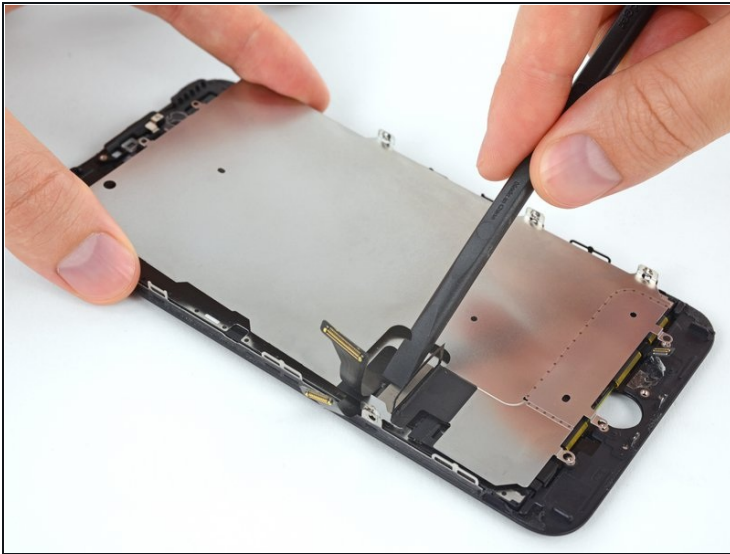
- Use a Y000 driver to remove two more 1.1 mm screws from the other side of the EMI shield.

## Step 45



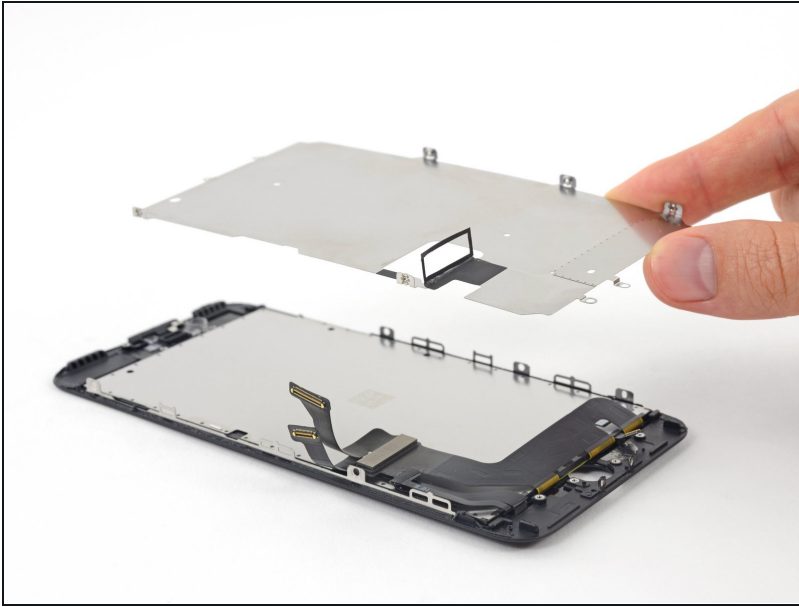
- Remove the 1.8 mm Phillips screw securing the EMI shield near the bottom of the display.

## Step 46



- Lift the LCD shield plate while pressing down on the flex cable it surrounds.
- Feed the flex cable through the cutout in the LCD shield plate, being careful not to snag it.

## Step 47



- Remove the LCD shield plate.

## Step 48



- Only the LCD and digitizer remains.

---

Compare your new replacement part to the original part—you may need to transfer remaining components or remove adhesive backings from the new part before installing.

**To reassemble your device, follow the above steps in reverse order.**

Take your e-waste to an [R2 or e-Stewards certified recycler](#).

Repair didn't go as planned? Try some [basic troubleshooting](#), or search our [Answers forum](#) for help.