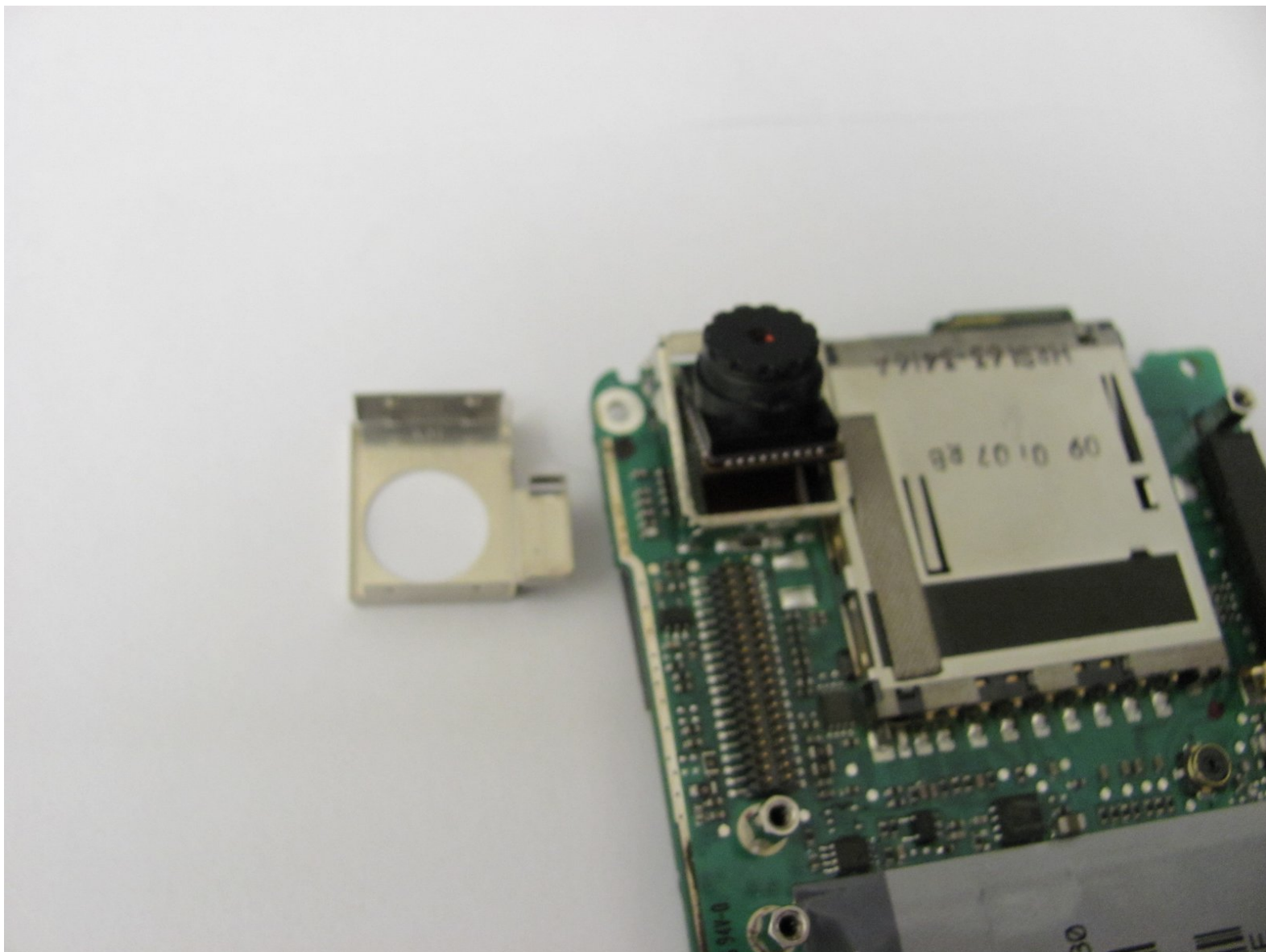




Palm Treo 700P Camera Replacement

This Guide will illustrate how to access the camera of your Palm Treo 700P.

Written By: John Rainier Solanzo





TOOLS:

- [iFixit Opening Tools](#) (1)
-

Step 1 — Battery



- Press the button located just above the Sprint™ logo and then slide the cover down.

Step 2



- Use the small notch on the left hand side of the phone to remove the battery.

Step 3 — Back Case



- Remove the stylus from the phone.

Step 4



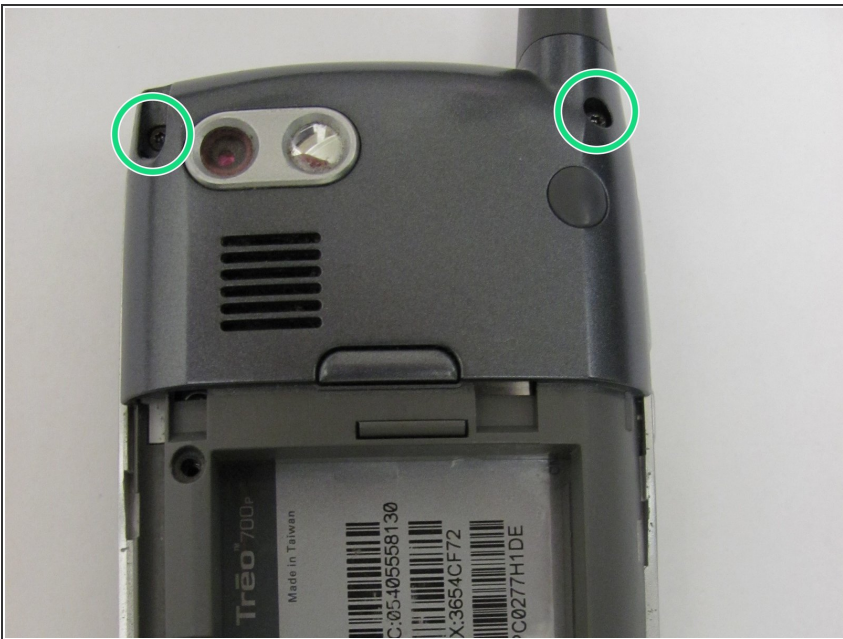
- After removing the battery and stylus, unscrew the 5 Torx screws (using a T-5 Torx screw driver)

Step 5



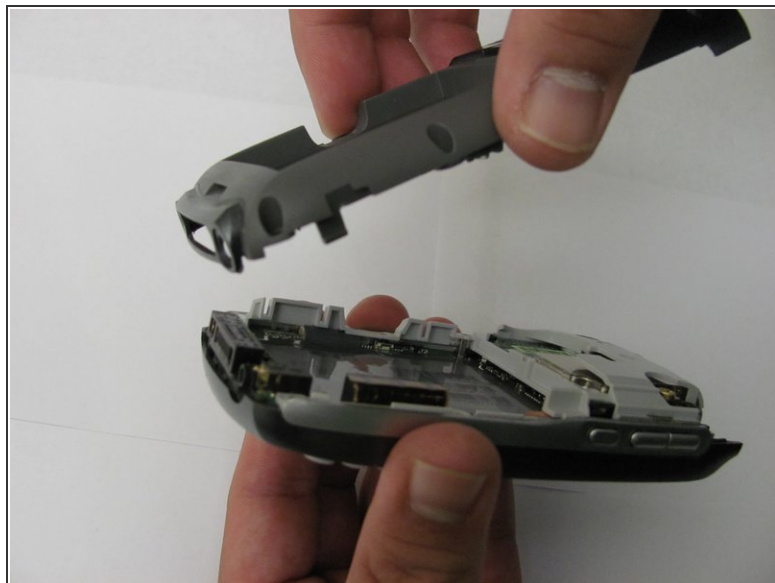
- Using the spudger, remove the small rubberized patch under the antenna.

Step 6



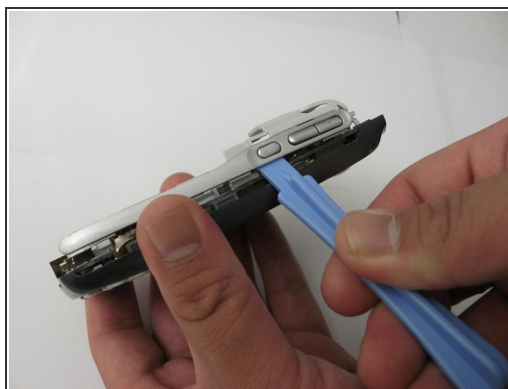
- Unscrew the last two screws using the previous screw driver.

Step 7



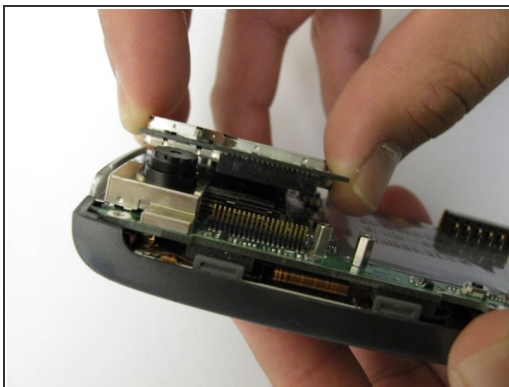
- Using the plastic opening tool, gently separate the back case from the phone body.

Step 8 — Motherboard



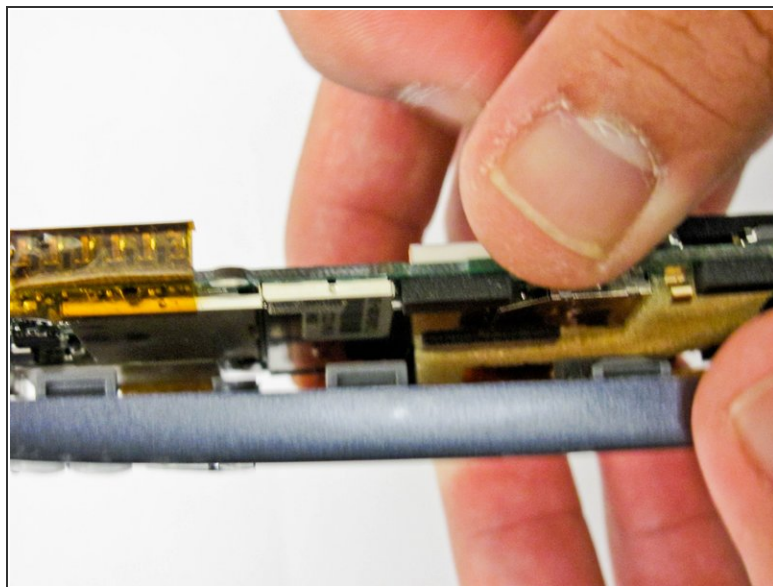
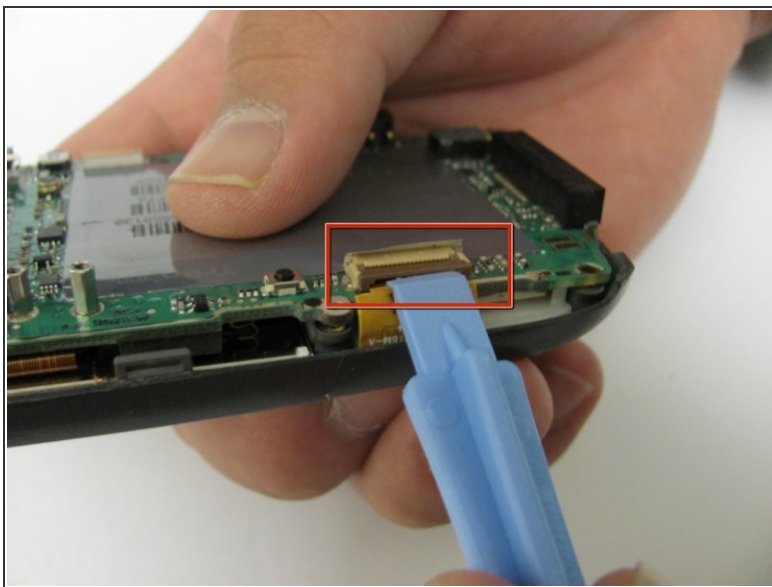
- Using a plastic opening tool, gently edge your way between the back and border case (Picture 2) until they are completely separated (Picture 3).

Step 9



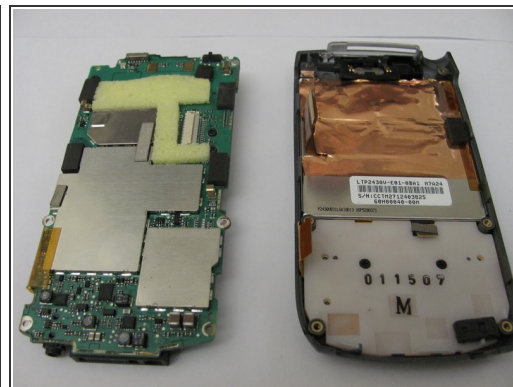
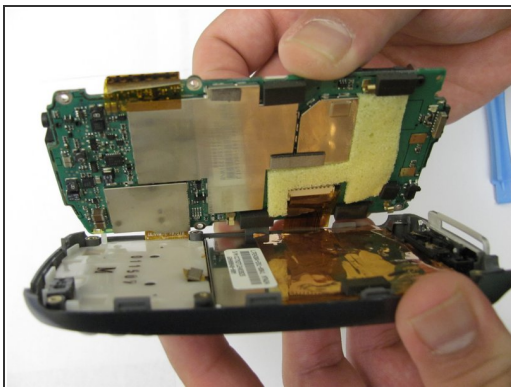
- Remove the antenna chip by unscrewing the two screws with Torx T-5 screwdriver (Picture 1).
- Once unscrewed, gently detach the antenna chip with your hands (Picture 2).

Step 10



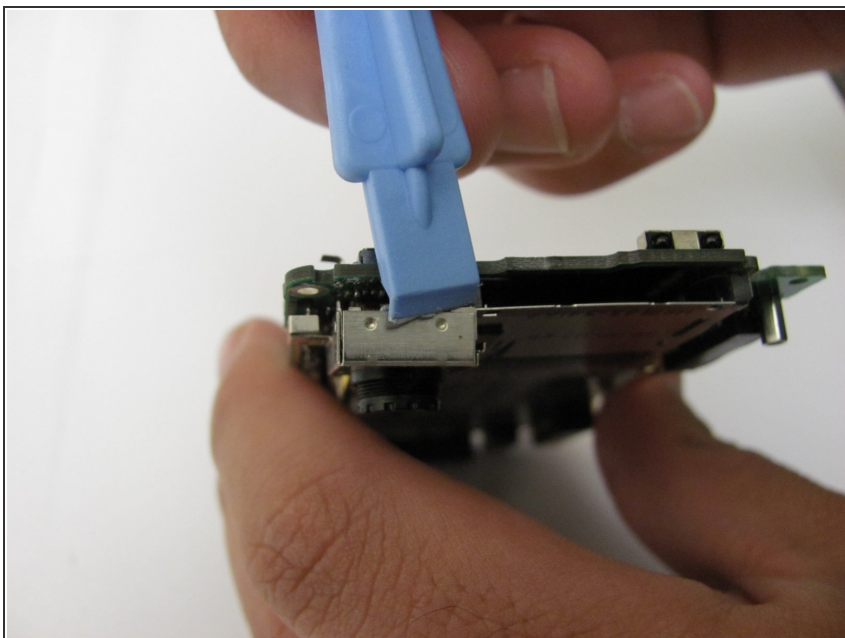
- Use the plastic opening tool to unlock the tab holding the keyboard connection (Picture 1).
- Once the keyboard connection is detached, use your hands to gently separate the motherboard from the back panel (Picture 2).

Step 11



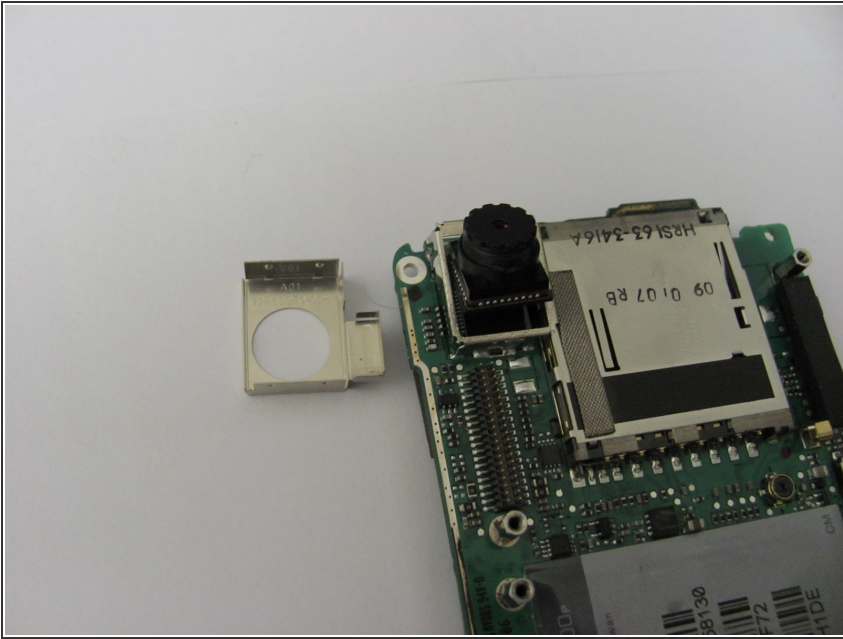
- To completely detach the motherboard from the back panel, use the plastic opening tool to unlock the LCD connection from the motherboard (Picture 2).
- Once the LCD connection is unlocked, the motherboard should now be completely detached from the back panel, keyboard, and LCD (Picture 3).

Step 12 — Camera



- Using the plastic opening tool, loosen the metal camera holder.

Step 13



- Once the camera holder is loose, gently detach it from the camera.

To reassemble your device, follow these instructions in reverse order.