



Replace AirPort Time Capsule A1409 HDD

Written By: David Medrano



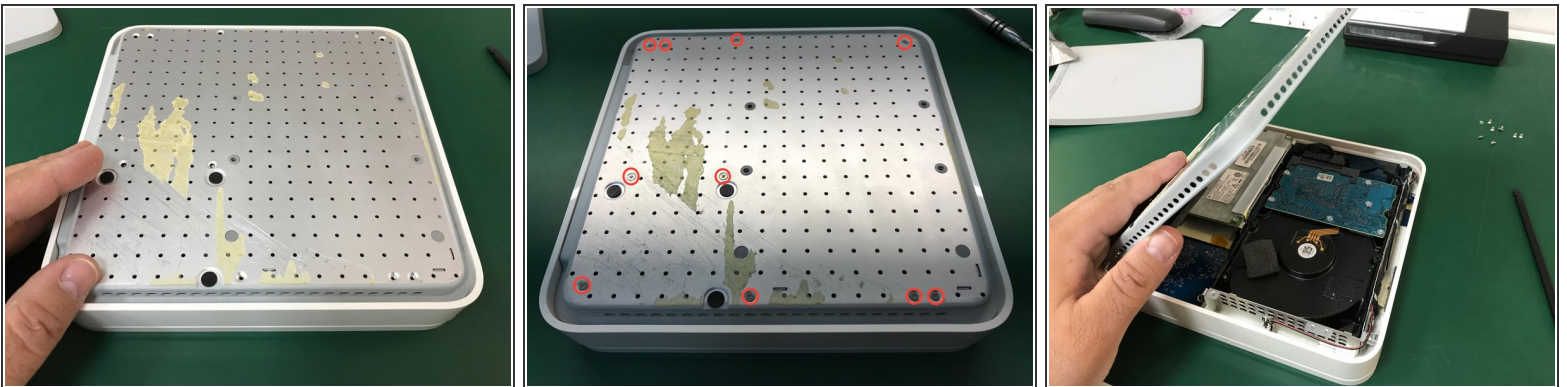
Step 1 — Hard Disk Drive



- Put the unit upside down and take off the rubber bottom cover. It is better to start at a corner.

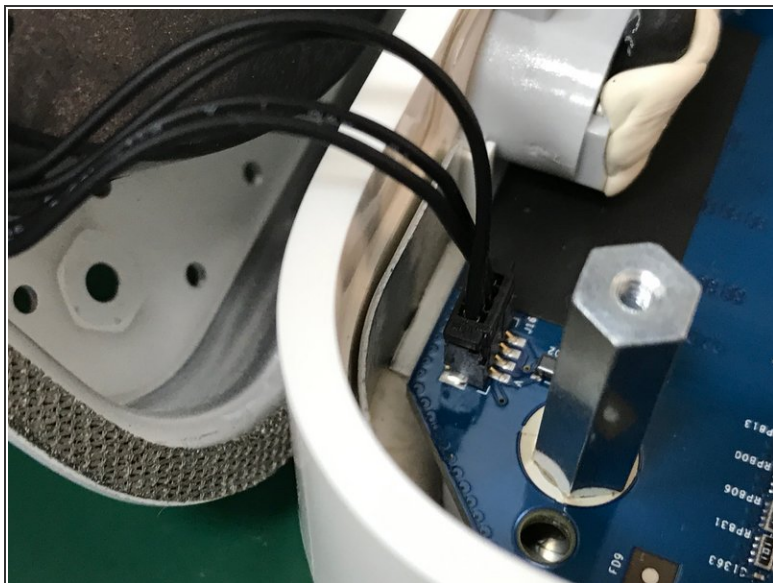
⚠ Rubber becomes brittle as it ages. Depending on air temperature and how set the adhesive is, you may need to spend some time warming the back plate with a hot plate (on low) or hair dryer.

Step 2



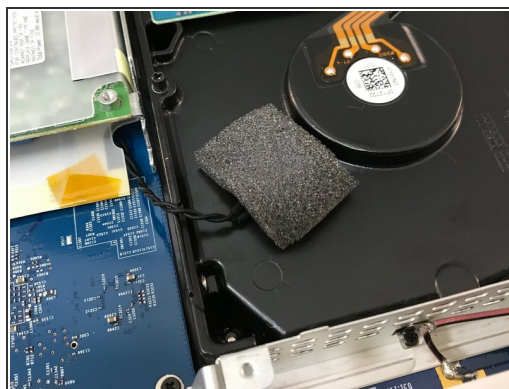
- Remove the # 10 Phillips # 00 screws that hold the Time Capsule's lower metal bracket.
- Open to the left leaving the network connectors on that side. Do not open it fully to avoid breaking the fan cable.

Step 3



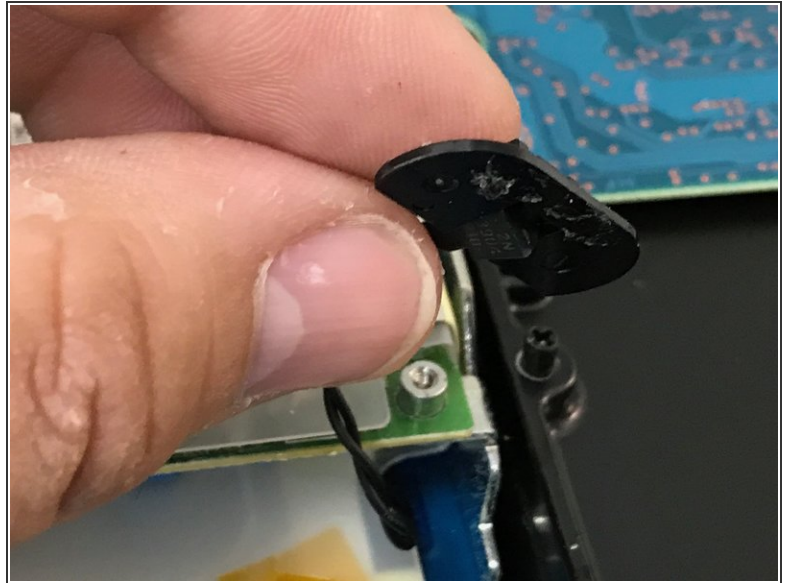
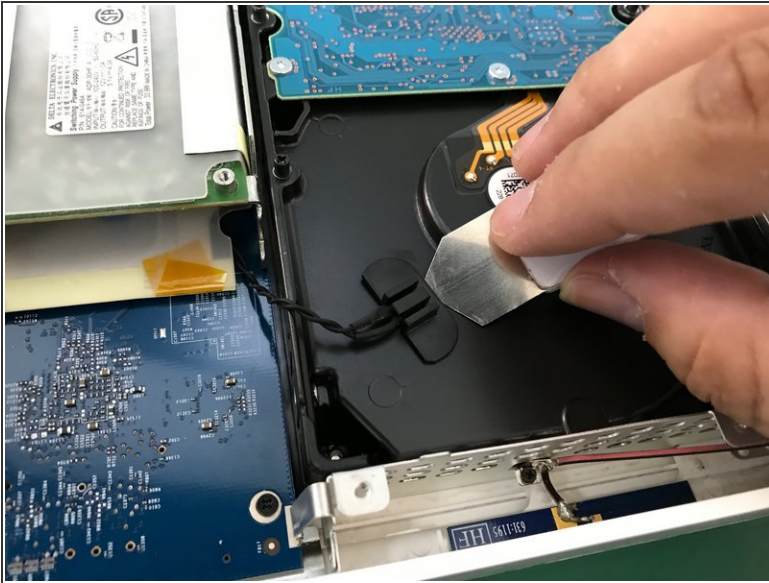
- With the tip of a spudger carefully remove the fan connector then remove the metal bottom cover.

Step 4



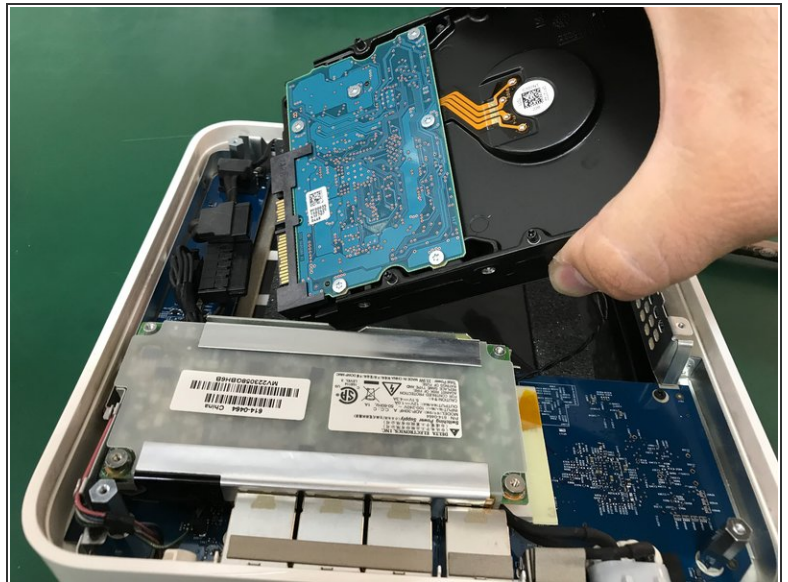
- Find the temperature sensor on the surface of the hard disk.
- Carefully remove the tape covering the temperature sensor.

Step 5



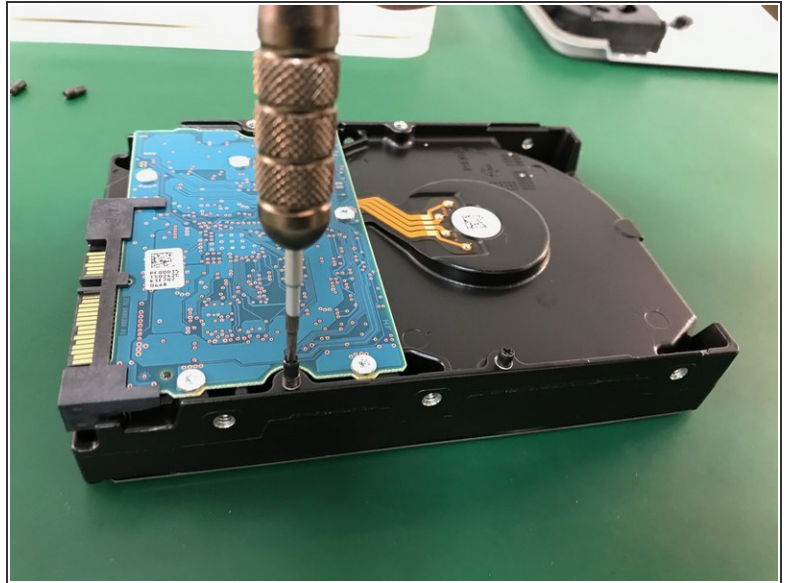
- Remove the clip that holds the temperature sensor and remove both.

Step 6



- Lift the hard drive a bit without pulling too hard to not cause damage to the power and data connectors of the hard disk. Removing the power connector from the hard drive
- Remove the data connector from the hard disk.

Step 7



- Once we have the disc out of the Time Capsule, we remove the 4 Phillips head # 00 pillars and place them in the new unit.

To reassemble your gadget, follow these instructions backward.