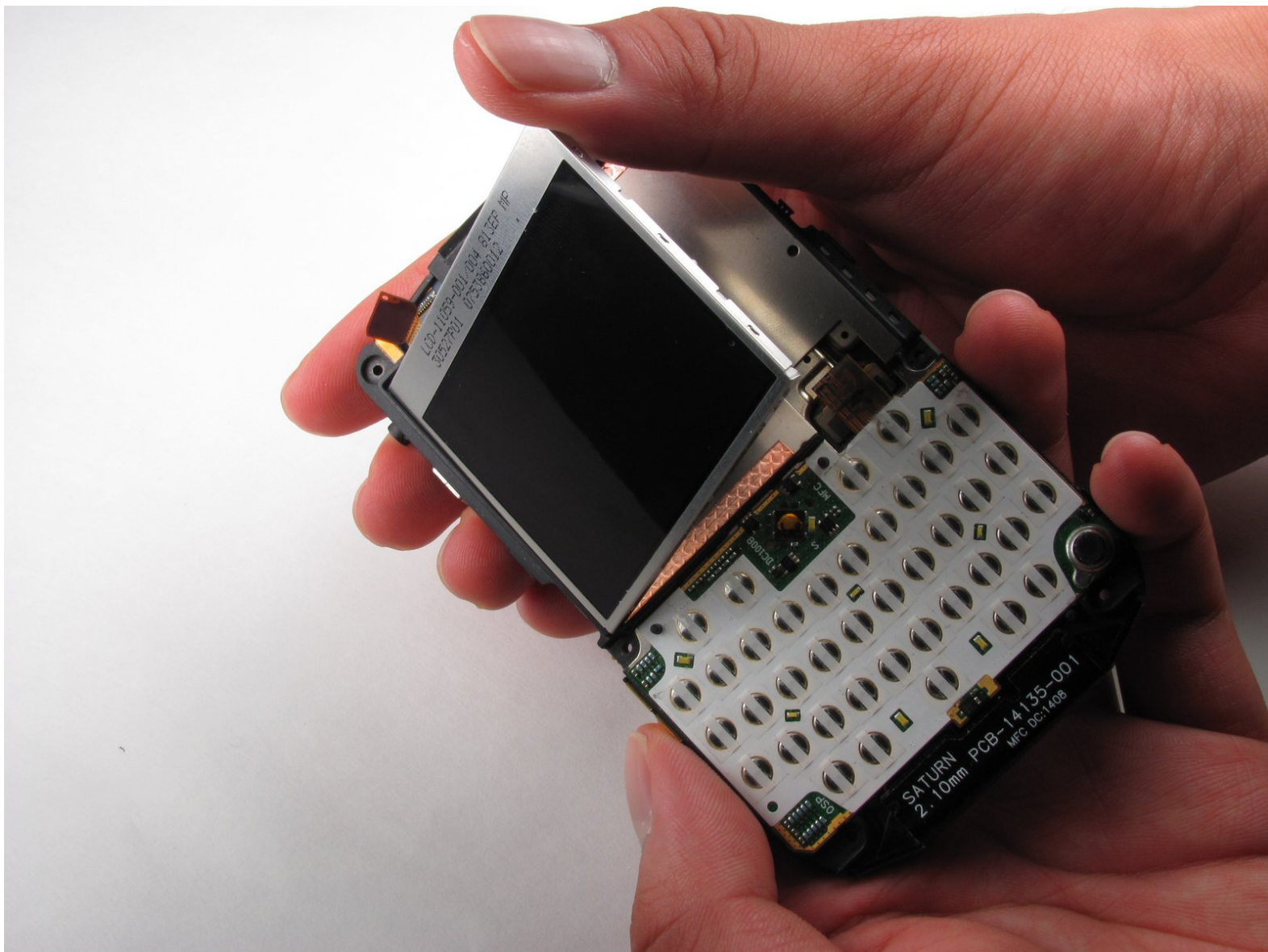




BlackBerry World Edition 8830 LCD Screen Replacement

Use this guide to install the LCD Screen on the BlackBerry 8830 World Edition.

Written By: Martha de Maria y Campos





TOOLS:

- [iFixit Opening Tools](#) (1)
 - [T4 Torx Screwdriver](#) (1)
-

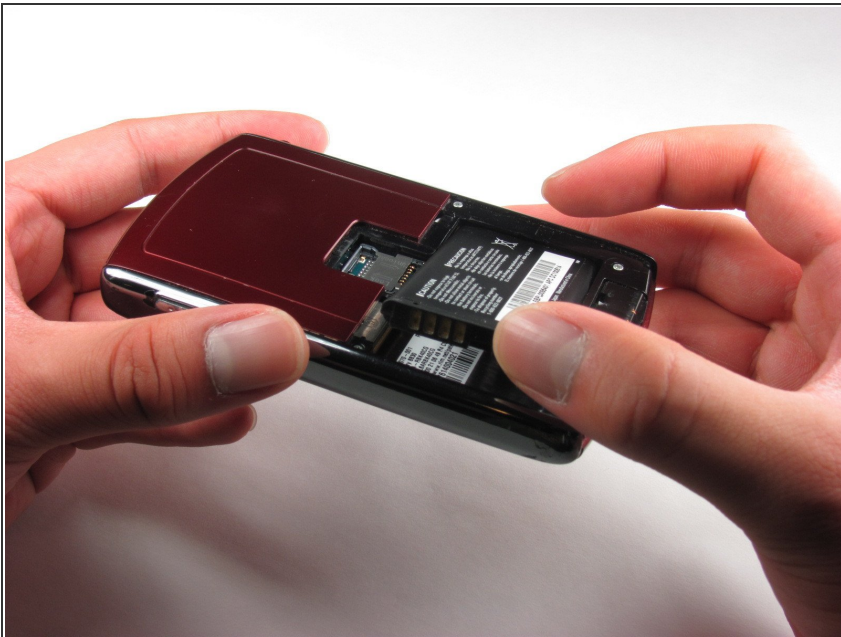
Step 1 — Battery



✦ Before beginning this installation, make sure phone is powered off .

- Turn phone over to the backside.
- Press down on the lower portion of the back cover.
- Slide the lower portion down to remove the cover and reveal the battery.

Step 2



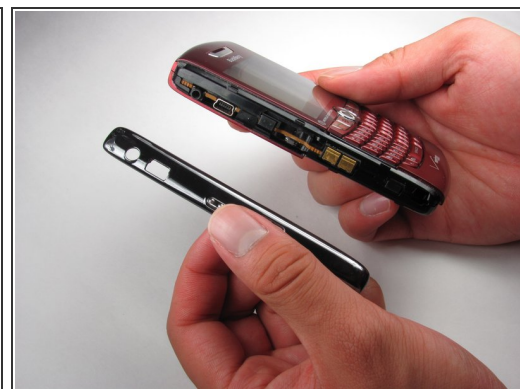
- Remove the battery from the phone.

Step 3 — Front and Back Casing



- Once the battery is removed, remove the four 9.2 mm screws with the T4 Torx Screwdriver.

Step 4



- Remove side panels with the Plastic Opening Tool by sliding it along the edge of the panel until you can pry it off with the tool.

Step 5



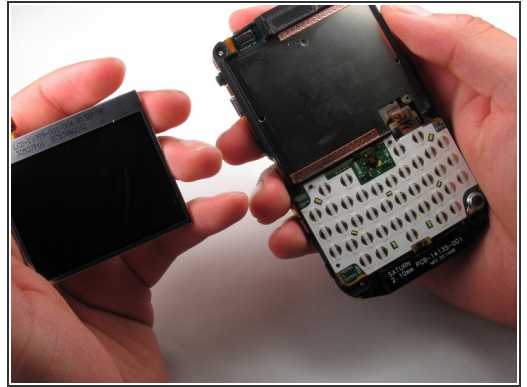
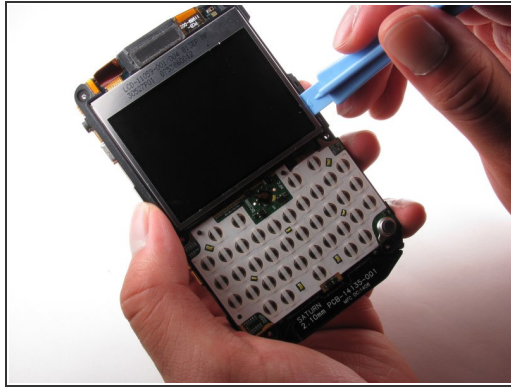
- Remove the back casing using the Plastic Opening Tool
- ⓘ Once the back casing is removed the top two buttons are likely to pop out.

Step 6



- Locate the two 9.2mm screws on the upper inside casing
- Remove them using the T4 Torx Screwdriver
- Slide off the front casing once the screws are removed.
- ⚠ Trackball will fall out once the casing is removed.

Step 7 — LCD Screen



- Disconnect the tab attached to the interior casing from the LCD Screen by gently pulling the tab up and away from the phone.
- Use the Plastic Opening Tool to pry the LCD Screen out.

To reassemble your device, follow these instructions in reverse order.