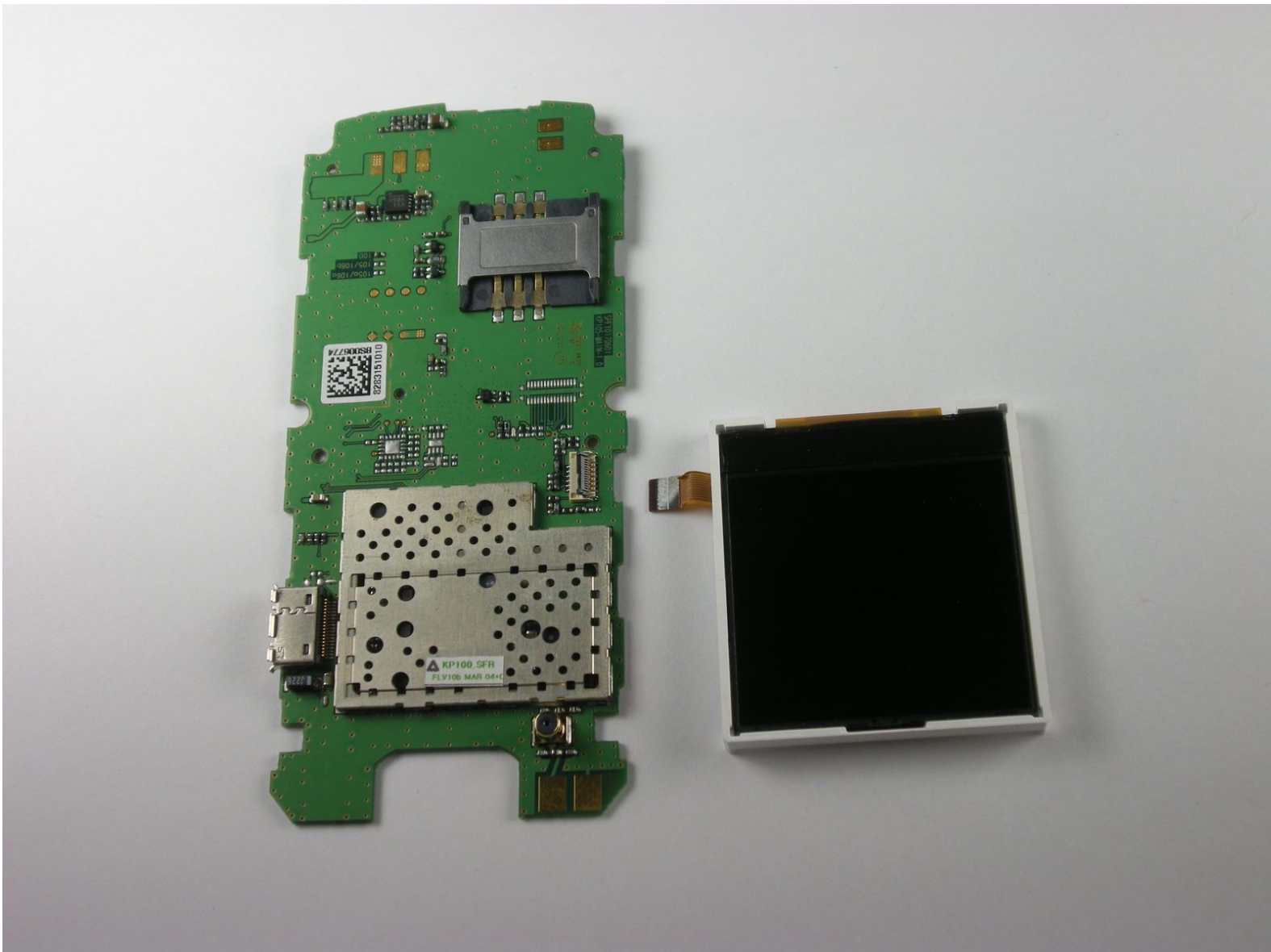




# LG KP100 Screen Replacement

This guide will show you how to take apart the LG KP100 and replace its LCD screen.

Written By: Preston Brown



---

## INTRODUCTION

Sometimes your LCD screen may go bad, which will require you to follow this guide and replace the screen entirely.

---

### TOOLS:

- [Phillips #0 Screwdriver](#) (1)
  - [iFixit Opening Tools](#) (1)
-

## Step 1 — Battery



- Begin by taking the back battery cover off.
  - Put your index finger on the white notch and apply pressure.
  - While applying pressure, move your hand backwards to slide the battery cover off of the body of the phone.

## Step 2



- Remove the battery.
  - Put your index finger in the notch above the battery near the top of the casing.
  - While applying pressure against the battery, lift up and take out the battery.

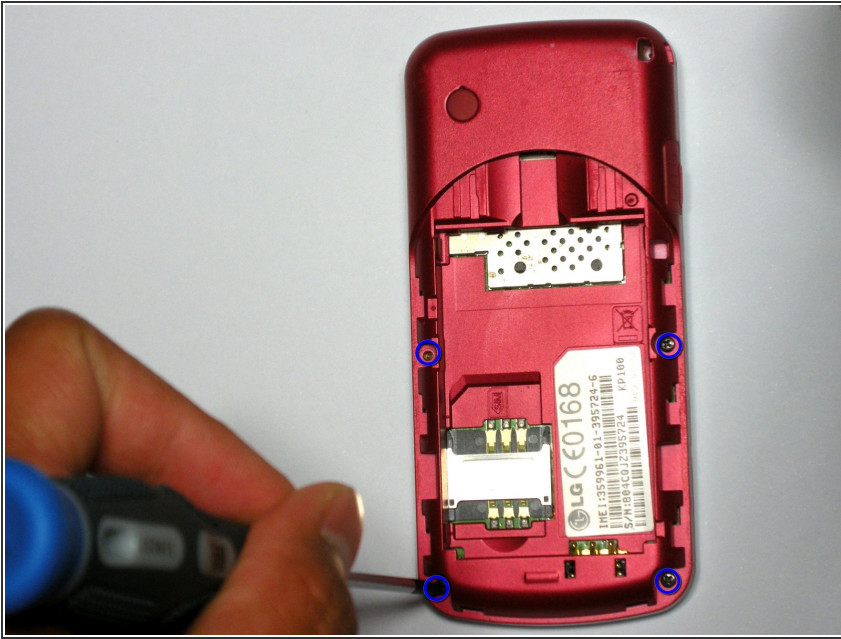
## Step 3 — SIM Card



- Remove the SIM card from its housing.
  - Put your finger in the provided notch below the SIM card and begin to push the SIM card towards the top of the device.
  - After it is out of the metal housing, it is free to be removed.

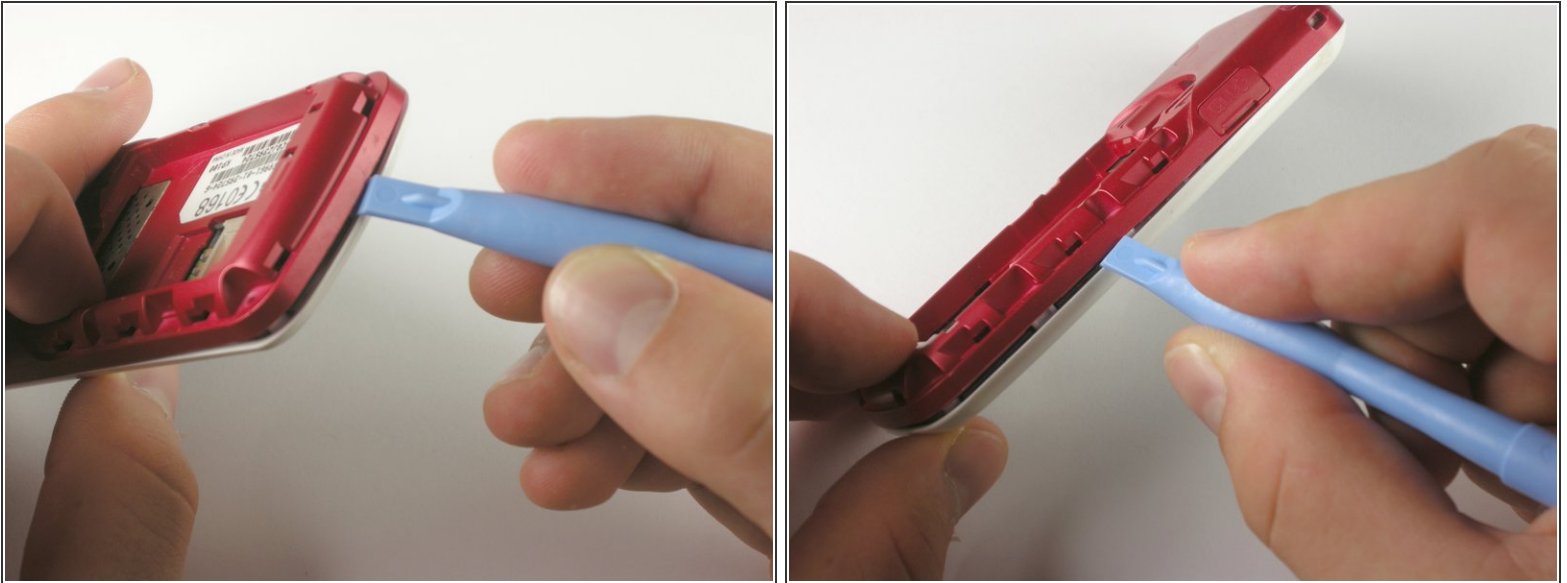


## Step 4 — Motherboard



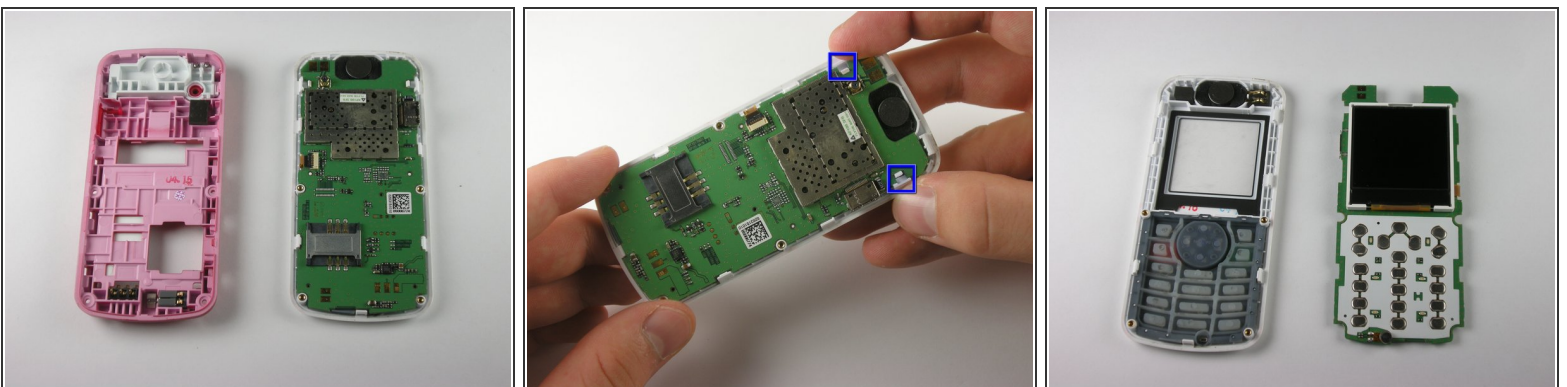
- Remove the four screws along the edge of the phone body, as shown in the picture to the left.

## Step 5



- Using the plastic opening tool, pry open the body of the phone, starting at the bottom of the phone (this tends to be the easiest place to start).
  - ☑ Double check to make sure the SIM card is removed from its housing. You will not be able to pry open the body of the phone if the SIM card remains in its housing.
- Continue by sliding the opening tool around the perimeter of the phone. You should hear multiple clicking sounds as you complete this, indicating the clips are becoming unlatched.
- ⓘ This may take a few tries to get correct. Don't give up if it doesn't work the very first time.

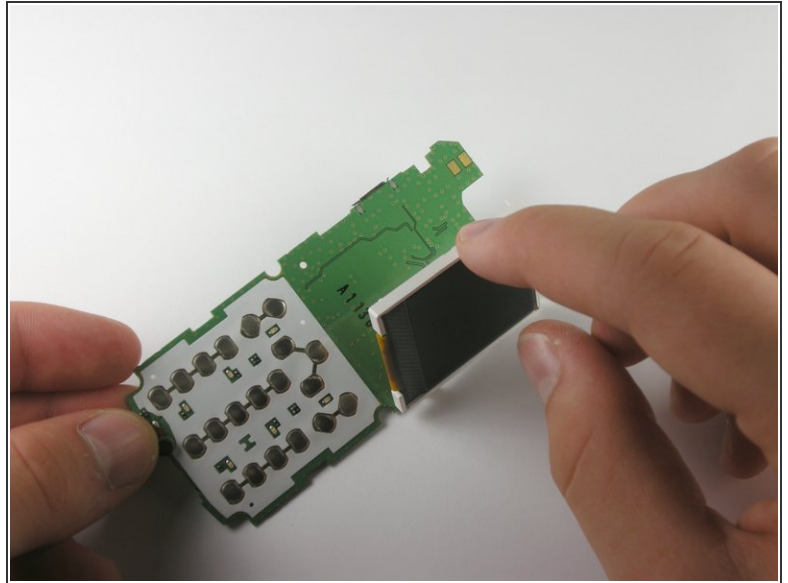
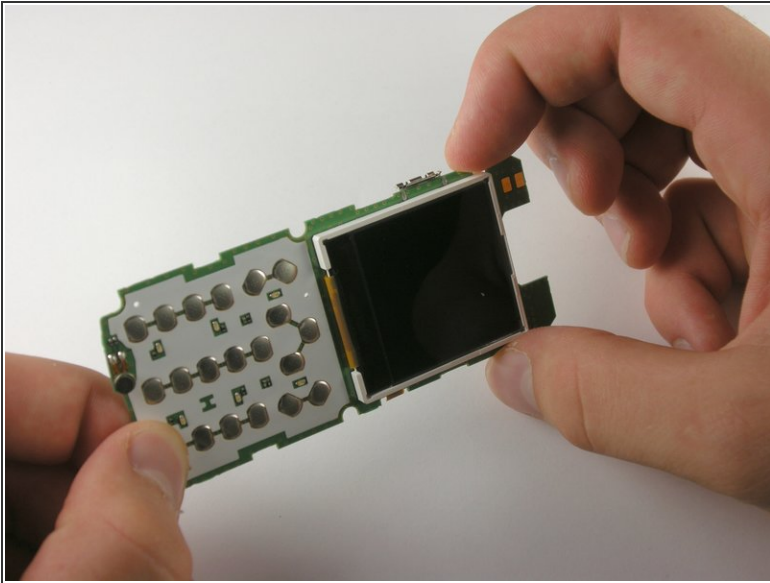
## Step 6



- Put the red casing aside and remove the motherboard from the front casing of the phone by carefully dislodging it from its two clips near the top of the phone.

This document was generated on 2020-11-25 09:01:21 PM (MST).

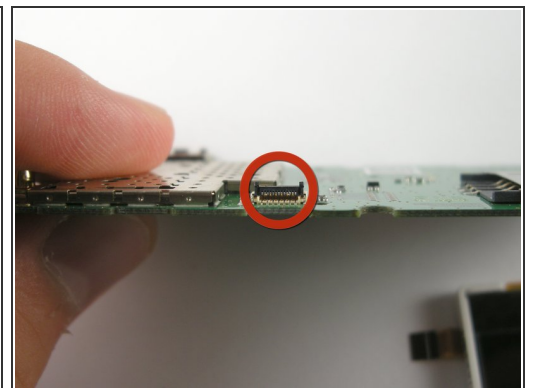
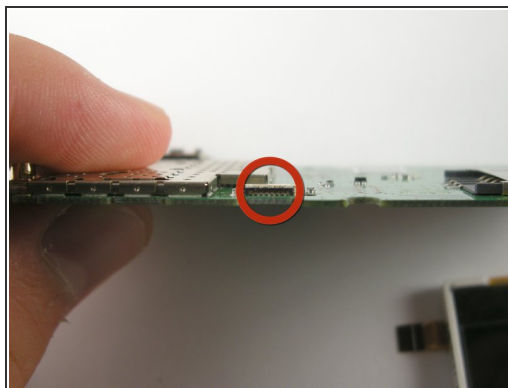
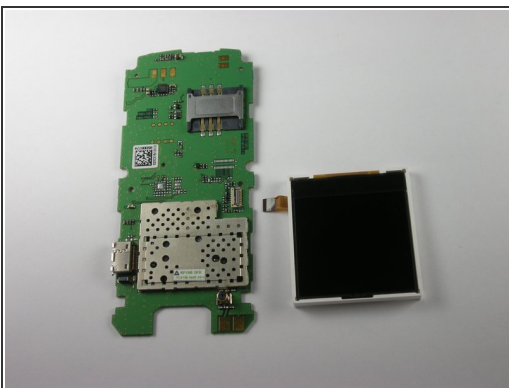
## Step 7 — Screen



- The upper left corner of the LCD display will be held in place with a small clip. Gently pull the small clip outwards, away from the surface of the motherboard.

⚠ As shown in the second photo, the lower right hand corner will still be attached to the motherboard.  
**DO NOT** try to remove this part yet.

## Step 8



- The LCD screen is attached by a small ribbon to the motherboard. Gently pull the screen out of the clip it is attached to.
- Notice: When re-installing a new LCD screen, make sure to prop up the black clip before installing the ribbon cord, as shown in the pictures.

To reassemble your device, follow these instructions in reverse order.