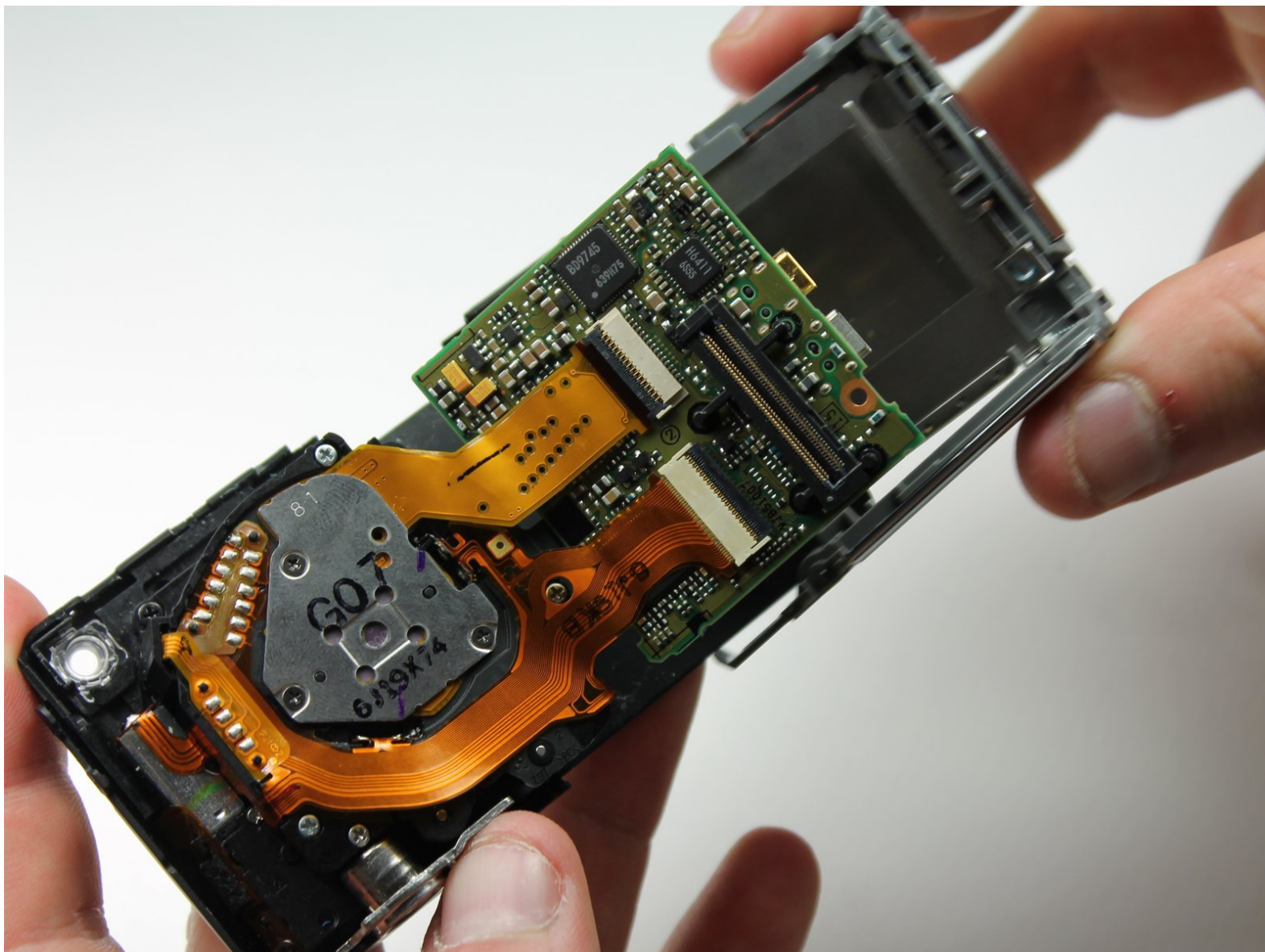




Panasonic Lumix DMC-FX07 Motherboard Replacement

Replace your broken motherboard so you can take pictures once again.

Written By: Karissa



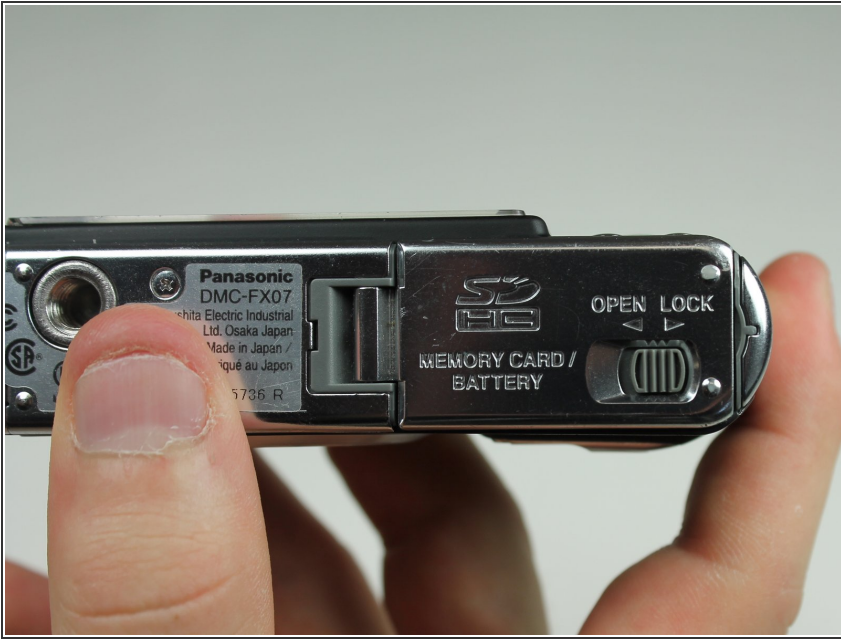
INTRODUCTION

This guide will show you how to remove the motherboard so you can replace it.

TOOLS:

- [Phillips #00 Screwdriver](#) (1)
 - [Spudger](#) (1)
-

Step 1 — Battery



- Move the switch on the battery door to the Open position.
- ⓘ The door will automatically swing open after you let it go.

Step 2



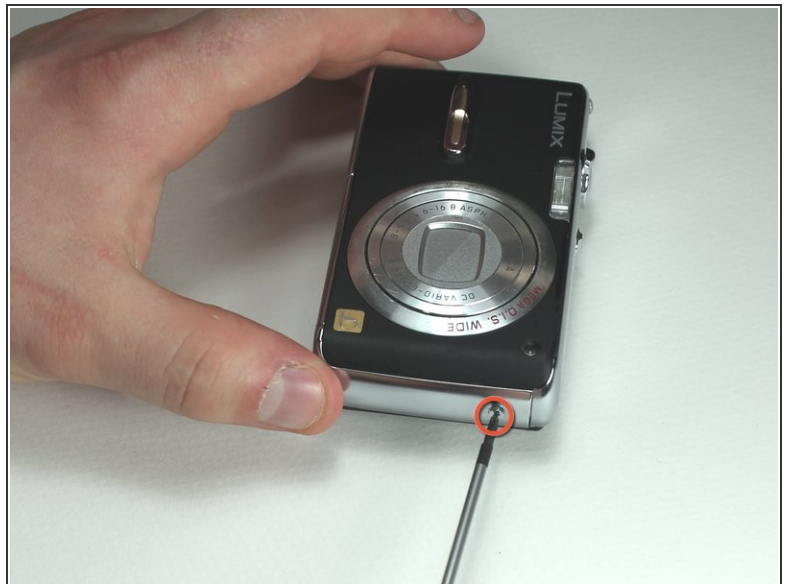
- Push the small gray tab on the top right corner to the left. The battery will pop out slightly.
- Keep your finger clear of the battery when it pops out.

Step 3 — Memory Card



- Push the memory card in and let go.
- ⓘ The memory card will pop out slightly.
- Pull out the memory card.

Step 4 — Back Cover



- Unscrew the small screws on the sides of the camera.
- ⓘ The screws on the left side(#00P, 4.7mm) are longer than the screw on the right side(#00P, 3.3mm).

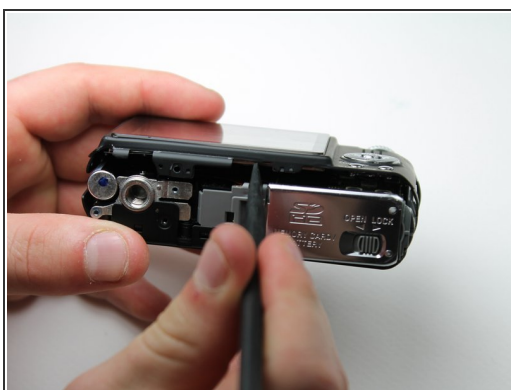
Step 5



- Unscrew the three small screws on the bottom(#00P, 3.3mm).

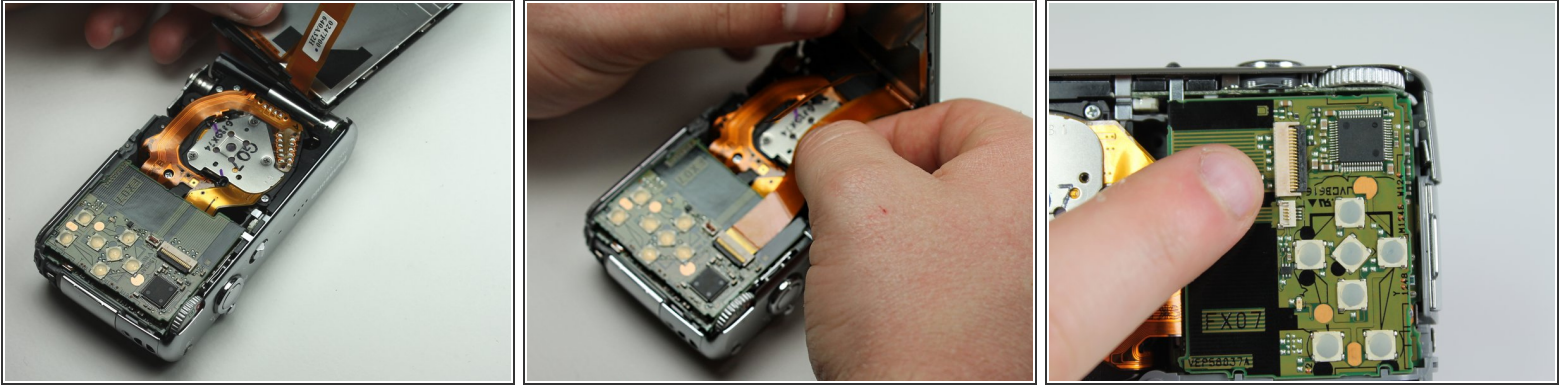
i The bottom will fall off.

Step 6



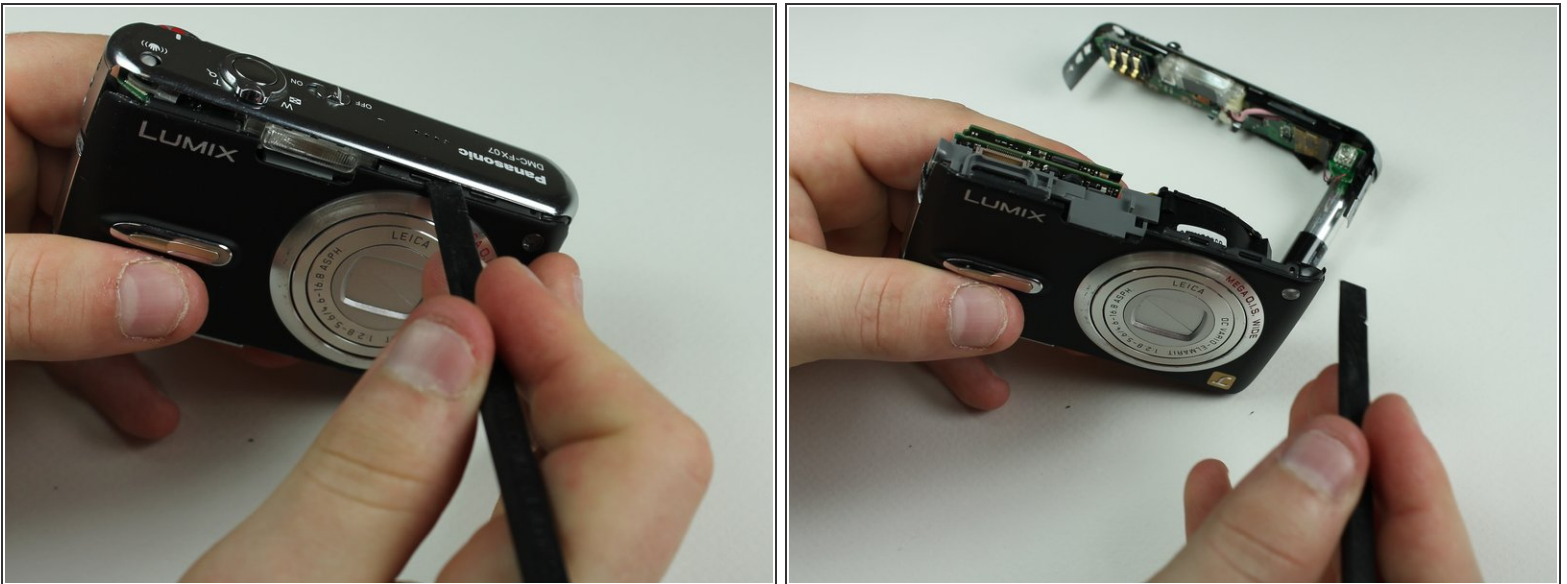
- Lift up the bottom back cover by prying the bottom edge with the spudger.
- Gently lift up the back cover with your hand from the bottom to the top.

Step 7



- Lift the tabs on the ZIF connectors.
- The ribbon cables should easily come out of the ZIF connectors.

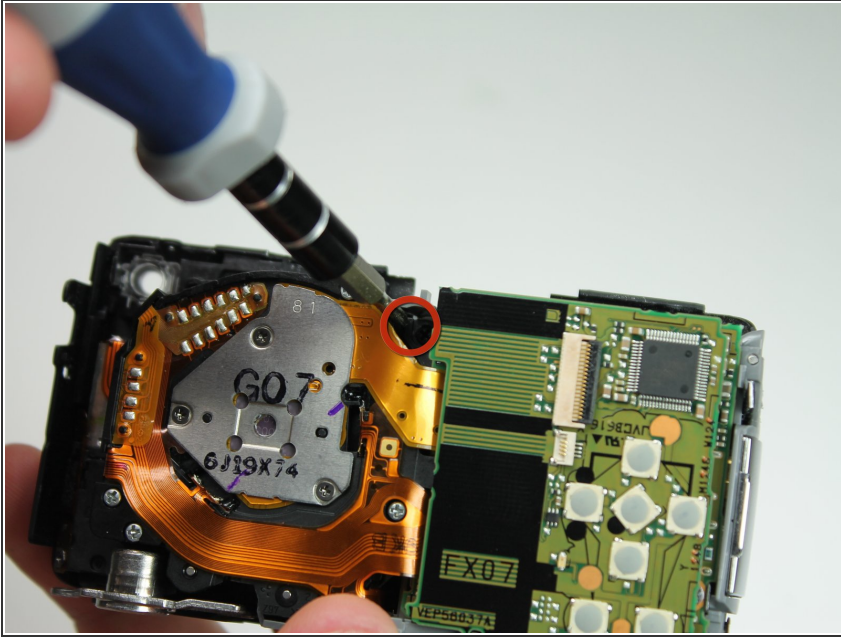
Step 8 — Top Cover



- Using the spudger, pry off the top cover by gliding the spudger along the entire edge between the top cover and the front cover.

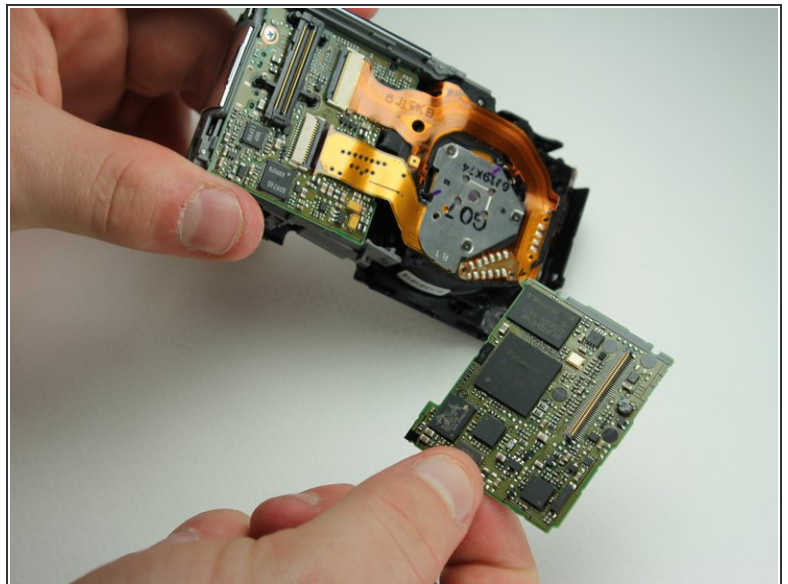
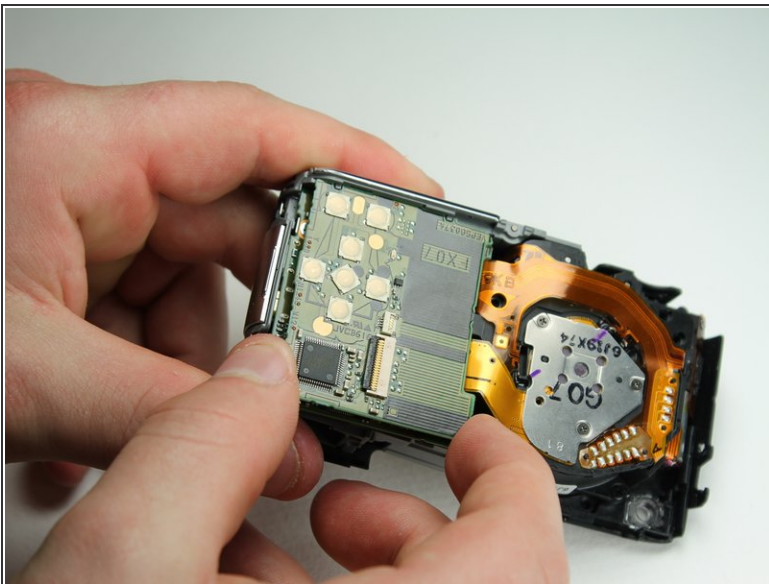
⚠ Be careful not to damage the cylindrical capacitor on the circuit board under the top cover.

Step 9 — Motherboard



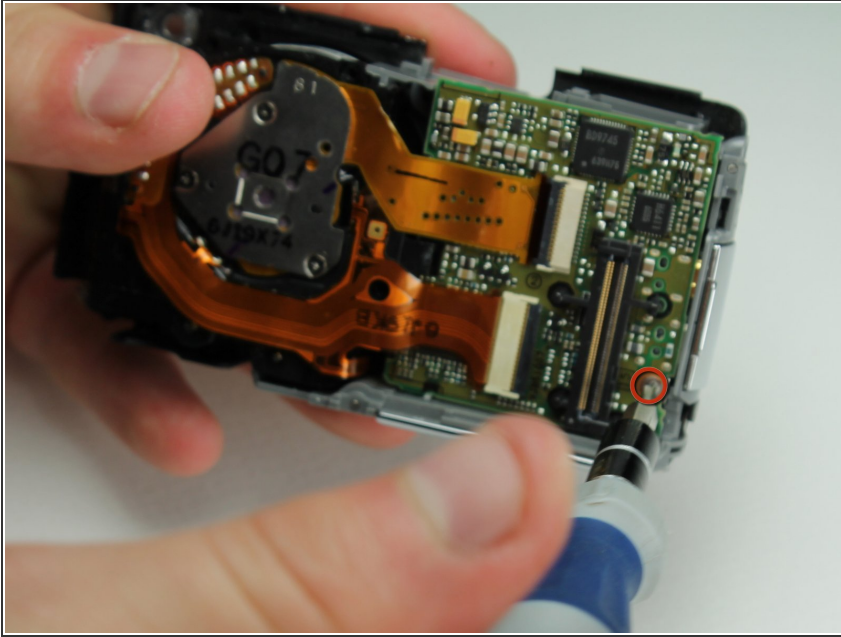
- Remove the small screw in the hole towards the top of the camera(#00P, 5.4mm).

Step 10



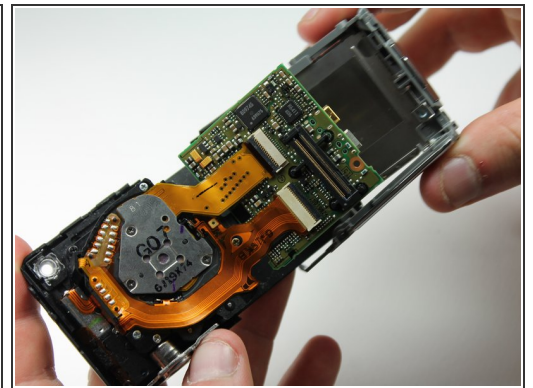
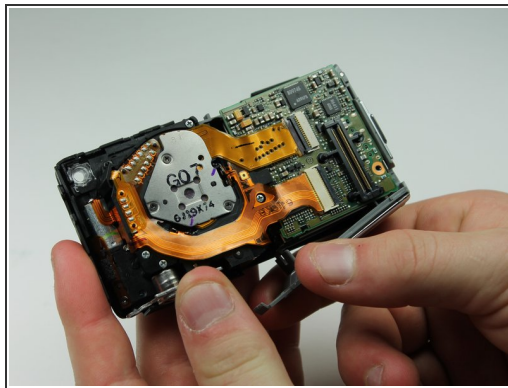
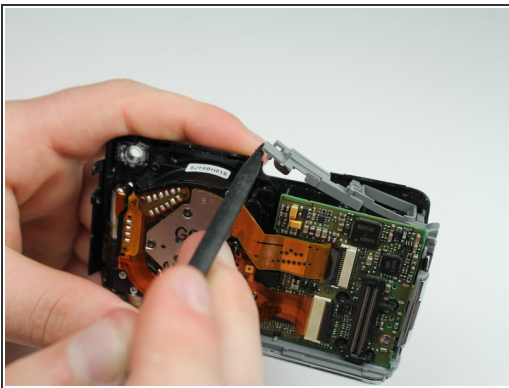
- Use the spudger to lift up the back logic board.
 - Using your fingers, gently wiggle and pull off the back motherboard.
- i** You will hear a click when you lift it up.

Step 11



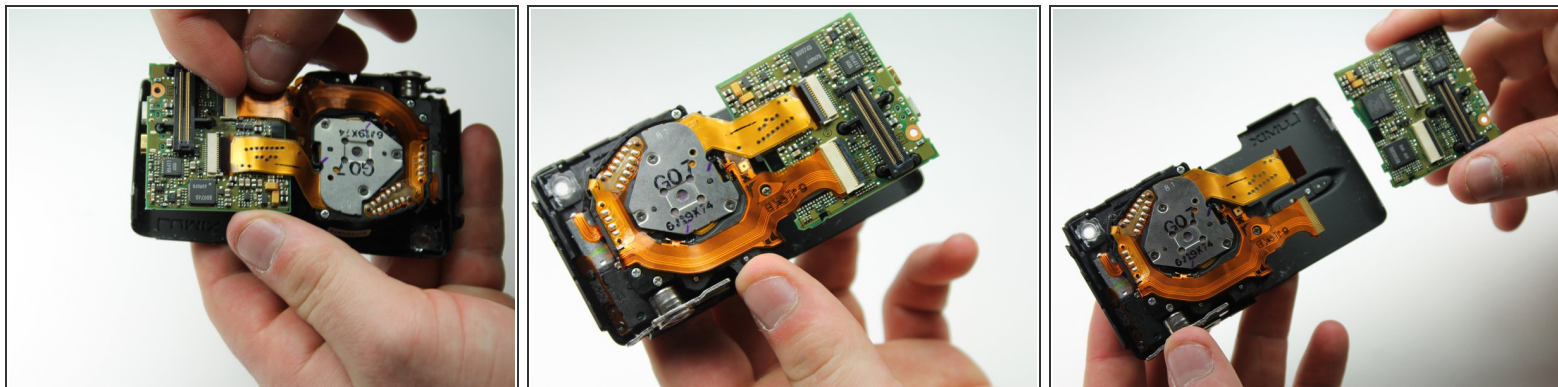
- Remove the small screw holding down the lower motherboard(#00P, 3.2mm).

Step 12



- Use the spudger to lift the upper tab from the main housing.
- Gently lift the lower tab from the main body by prying it with your finger.
- Gently pull off the plastic motherboard housing sideways.

Step 13



- Gently lift the tabs on the ZIF connectors connecting the lens to the front motherboard.
- ⓘ Once you lift the tabs the ribbons should fall right out and the front motherboard should be free.

To reassemble your device, follow these instructions in reverse order.