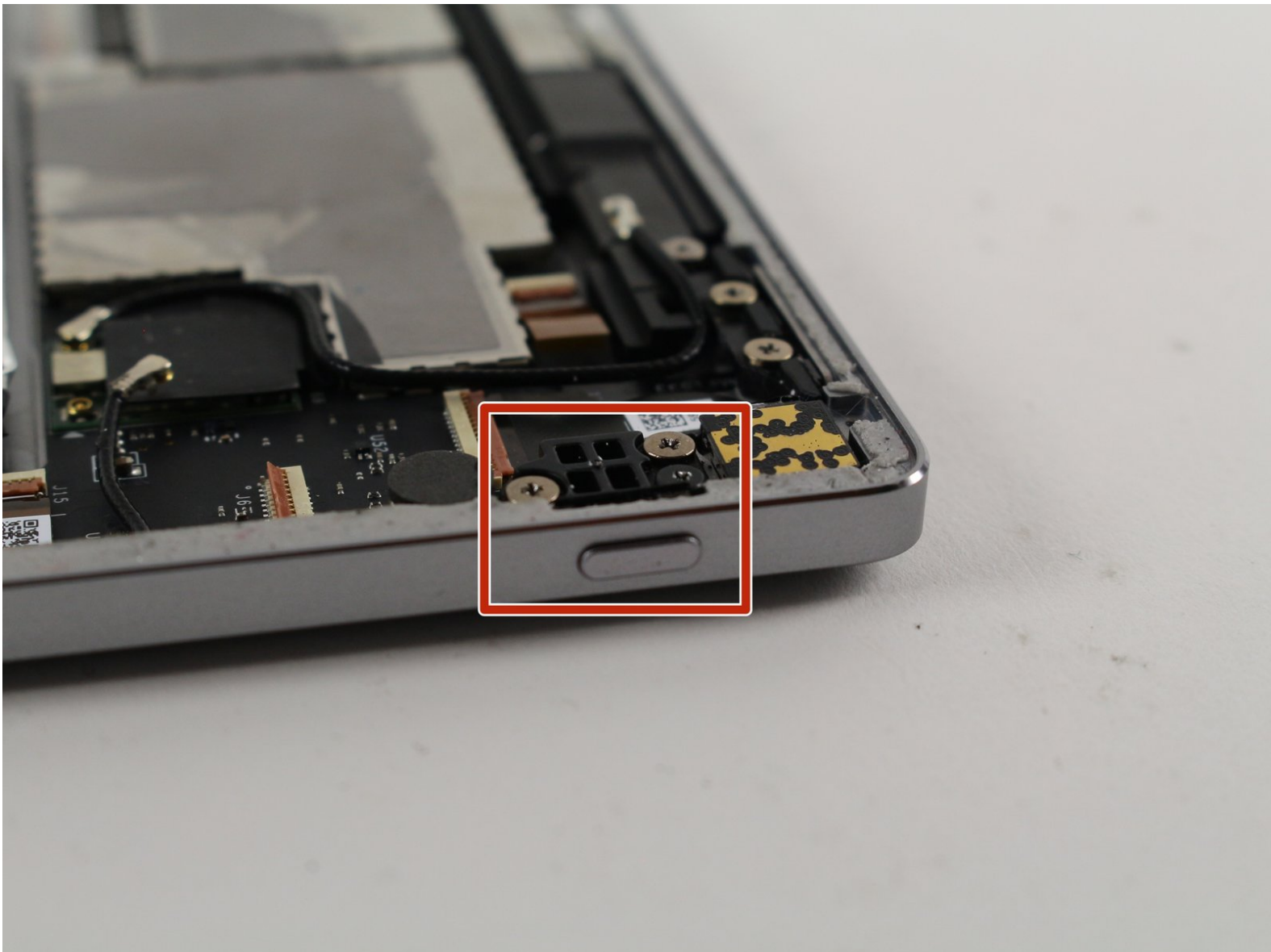




Google Pixel C Power Button Replacement

Replace the power button on the Google Pixel C to be able to turn the device on and off.

Written By: Isabelle Tang



INTRODUCTION

This guide will outline how to replace the power button should it be non responsive or faulty.



TOOLS:

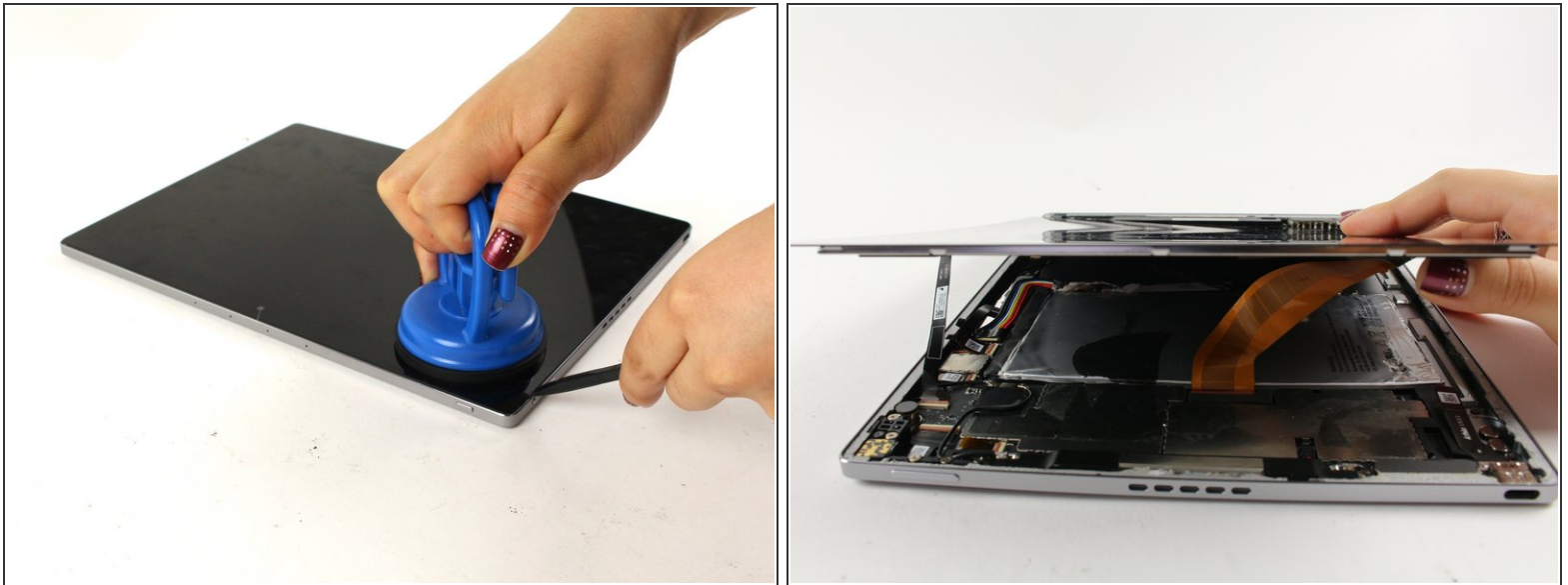
- [Heat Gun](#) (1)
 - [Metal Spudger Set](#) (1)
 - [iFixit Opening Tools](#) (1)
 - [Heavy-Duty Spudger](#) (1)
 - [Heavy-Duty Suction Cups \(Pair\)](#) (1)
 - [Phillips PH000 Screwdriver](#) (1)
 - [Tweezers](#) (1)
-



Step 1 — Screen



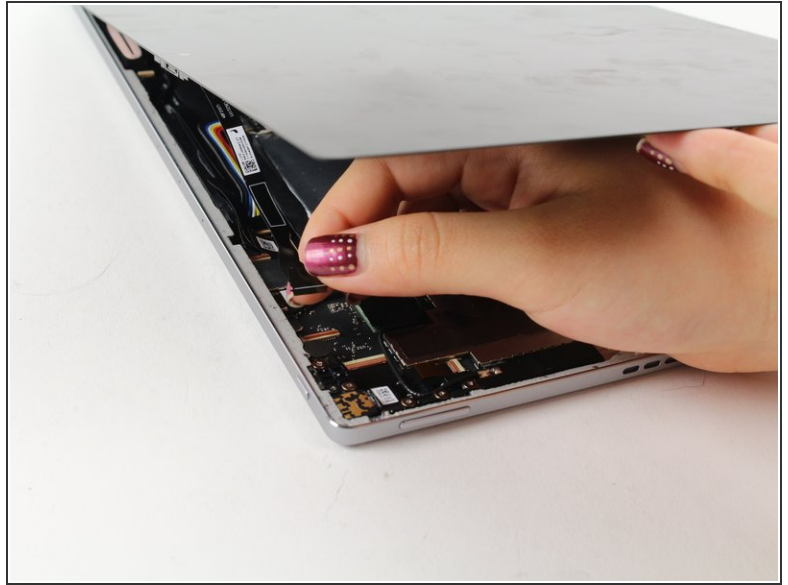
- ⓘ Ensure that the device is completely powered down before beginning to take it apart
- Use a heat gun to melt the adhesive that holds the screen to the device
- Move the heat gun around the edge of the screen for approximately 1 minute, or until the screen can be lifted off in the next step.
- ⚠ Make sure not to heat the screen for too long because too much can damage other components inside the tablet.

Step 2



- Use a suction cup to assist in lifting the screen while prying around its edges with a plastic spudger.
 - If necessary use a metal spudger to pry the screen up, taking care not to scratch the device.
-  Be careful not to pull the screen too far off. It will still be attached to the device by a cable for the front facing camera and the wide display data cable.
-  Reattaching the screen will require adhesive to ensure that it stays in place.

Step 3



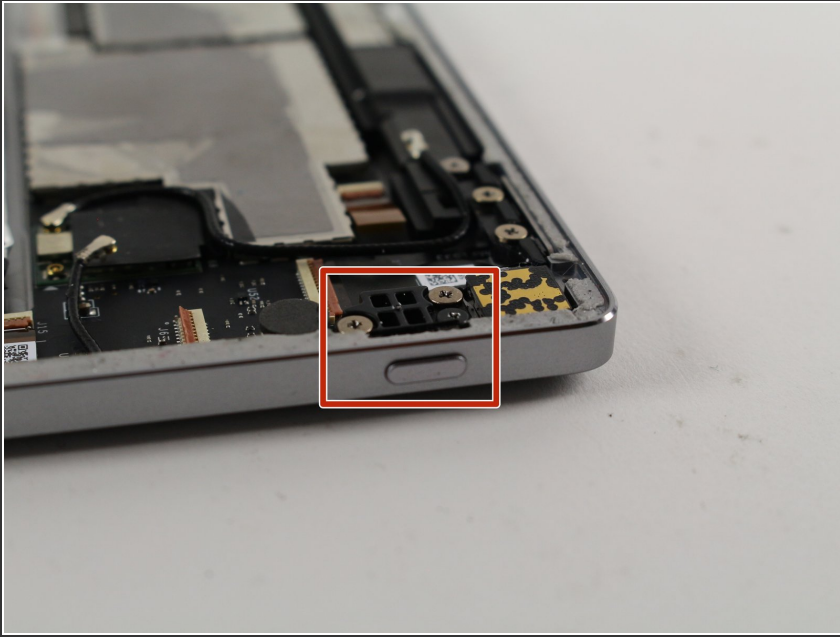
- Detach the cables for the camera by lifting the small flap using the tip of your fingernail or a spudger. Gently pull the ribbon cable out.

Step 4



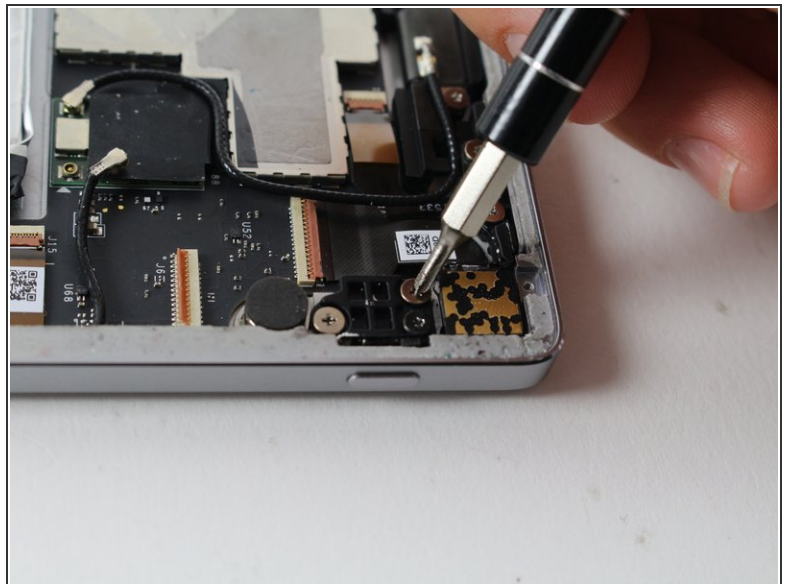
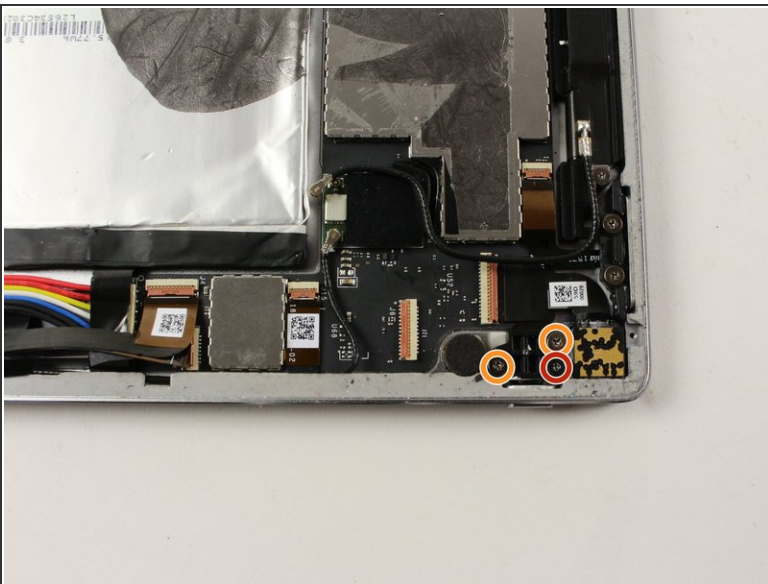
- Follow the same removal procedure to detach the wide gold cable.
- ✦ When reattaching cables, it is helpful to use tweezers to slide the cable in before securing it down with the flap.
- ⓘ This device is missing a battery, so the device that you are working on may appear slightly different inside.

Step 5 — Power Button



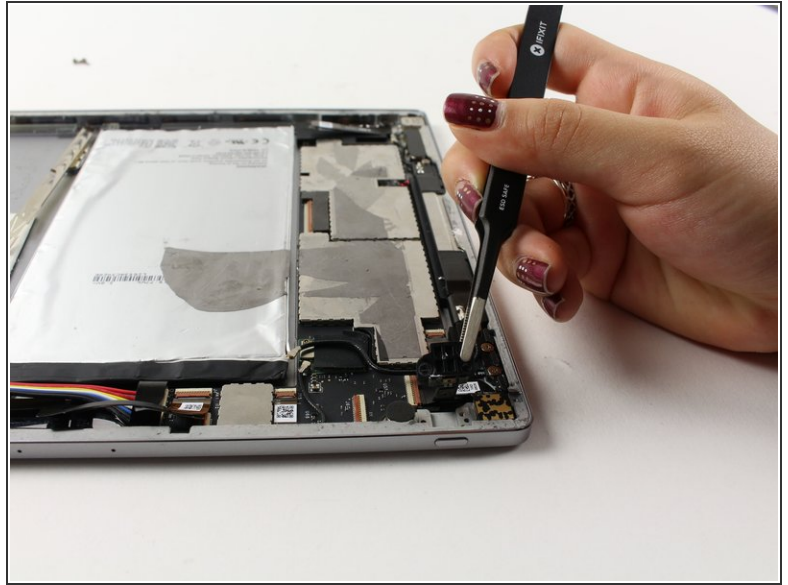
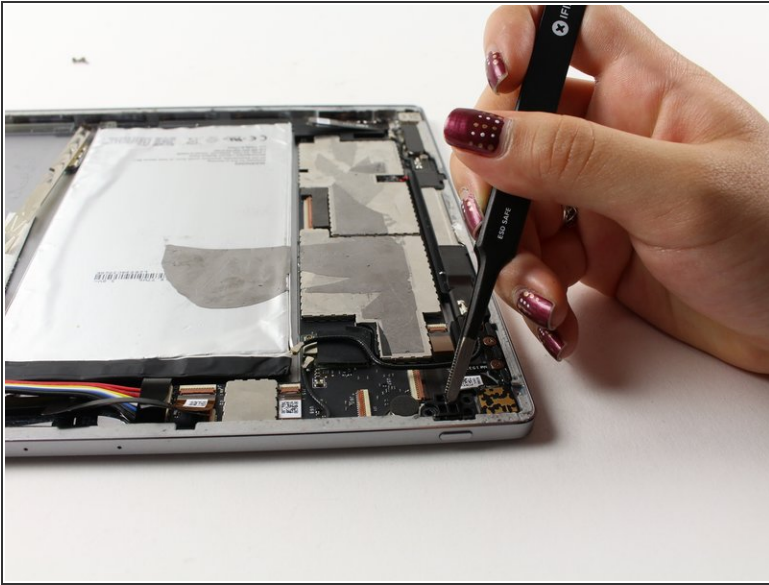
- Locate the power button along the edge of the tablet.
- ⓘ The actual power button technology is the black plastic piece located directly inside the device behind the silver button; this is what will be replaced.

Step 6



- Locate and remove the black 4.3mm Phillips #000 screw.
- Remove the remaining two silver 4.2mm Phillips #000 screws.

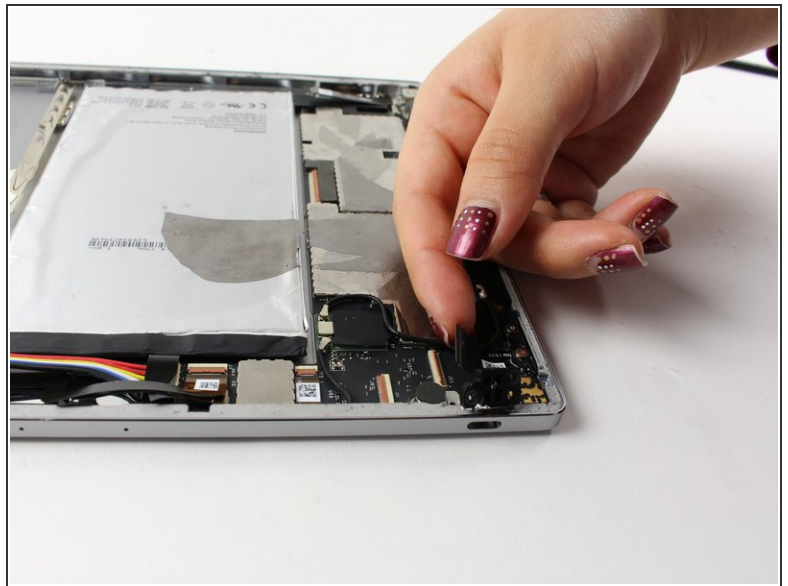
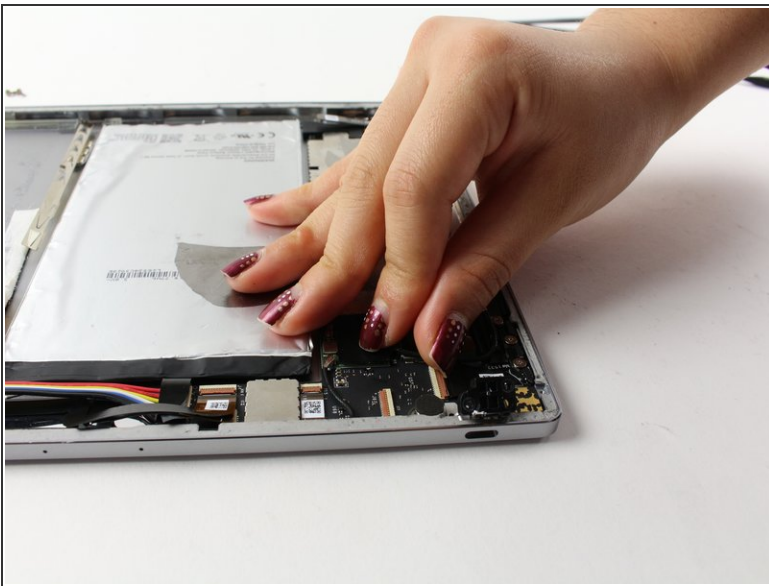
Step 7



- Use tweezers to slowly pull up on the power button technology as far as possible without pulling out the two black wires attached.

⚠ Don't pull up too hard, as the wires could be ripped out and damaged.

Step 8



- Detach the larger connector wire by flipping the copper hinge located at the base of the connection with your fingernail.

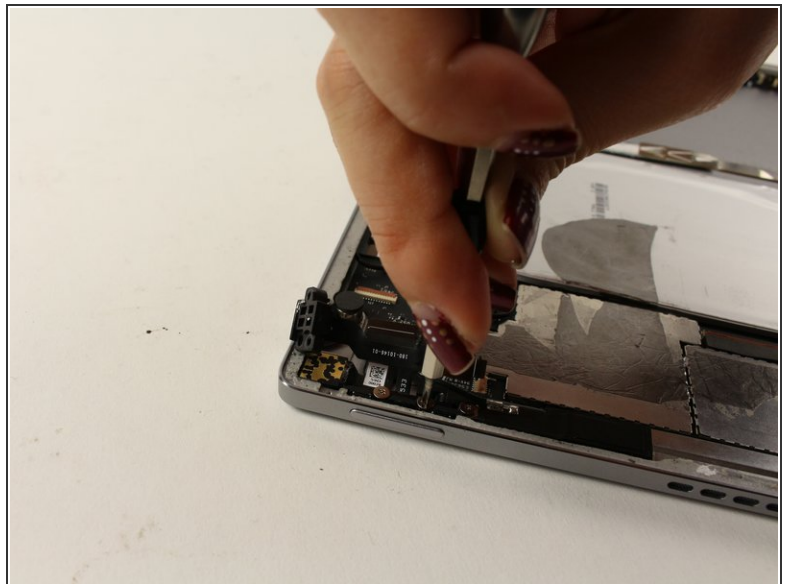
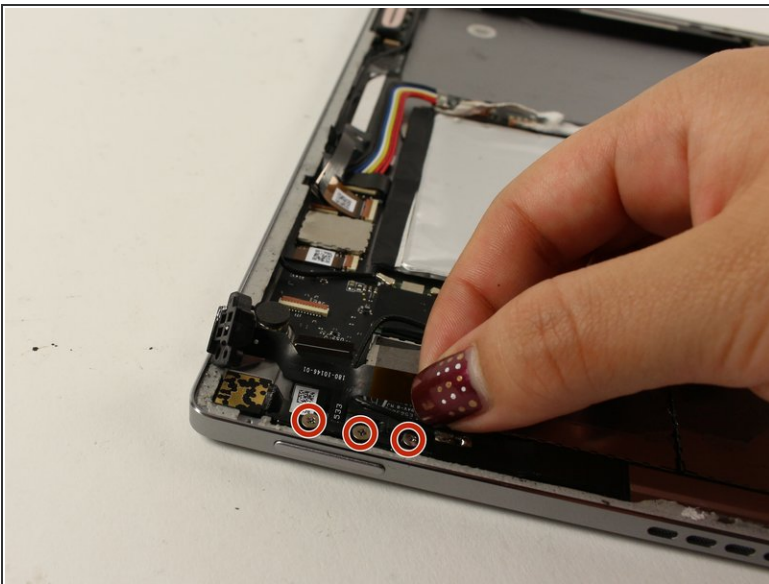
Step 9



- Flip the hinge of the second, more narrow wire to release the connection.

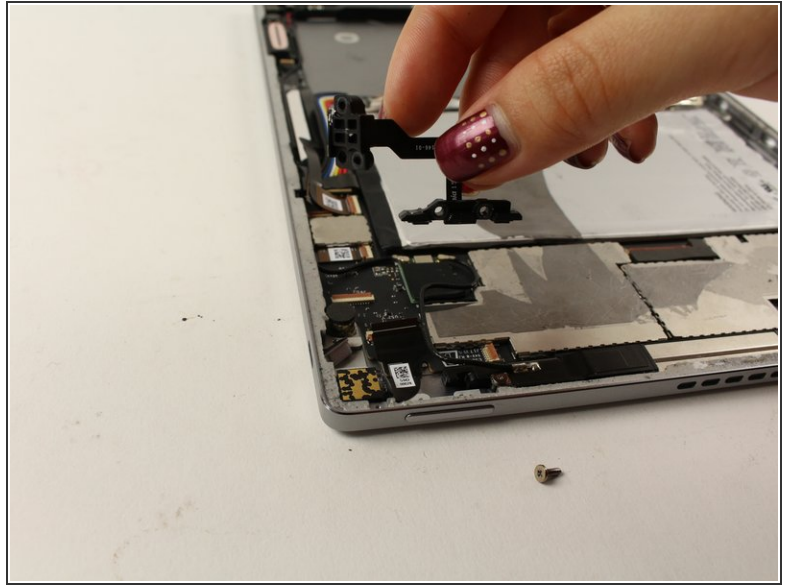
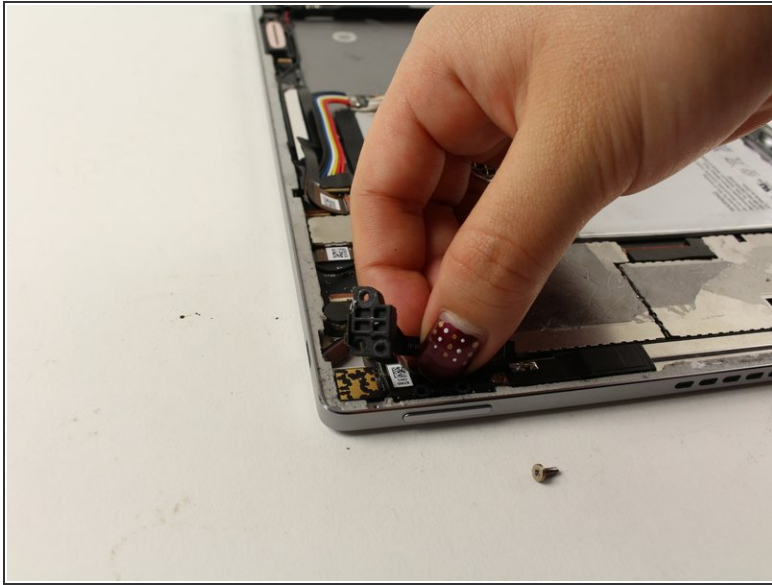
⚠ Don't pull the power button technology out yet. This wire is attached at one more place in the device.

Step 10



- Locate and remove the three 4.2mm Phillips #000 screws at the base of where the second wire is still connected.

Step 11



- Once all the screws are removed, gently pull up on the entire power button technology piece, to remove it from the device.

To reassemble your device, follow these instructions in reverse order. New adhesive will be needed to re-apply the screen.