



# Bose Wave Radio AWR1-1W Front Grill Replacement

Remove the front grill of the device for cleaning and accessing other parts.

Written By: Cassie Harriman



---

## INTRODUCTION

Over time, the front grill may become dirty and need cleaning, or another component further inside the device may require maintenance. Use this guide to remove the front grill and access internals or perform any necessary cleaning.



### TOOLS:

- [Spudger](#) (1)
-

## Step 1 — Front Grill



- Wedge the spudger between the top and front panel on the right side of the device.
- Push down on the spudger, lifting the front panel away from the top panel until it pops out of the right side.
- Repeat for the left side of the device.

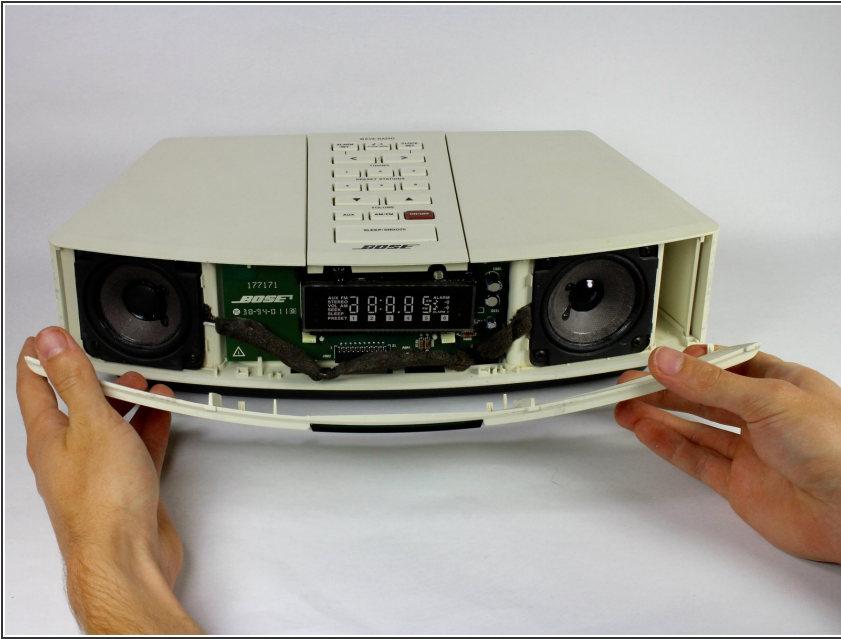
⚠ Too much pressure may break the panel, but it should flex slightly before it pops out.

## Step 2



- Once the panel is released on the left side, wedge the spudger between the top panel and front grill of the device as shown.
- Apply pressure and move the spudger upward until the front grill pops out.
- Repeat for the right side of the device.

### Step 3



- Lift the front grill away from the device.

To reattach the front panel, press it into the front of the device until it pops back into place.