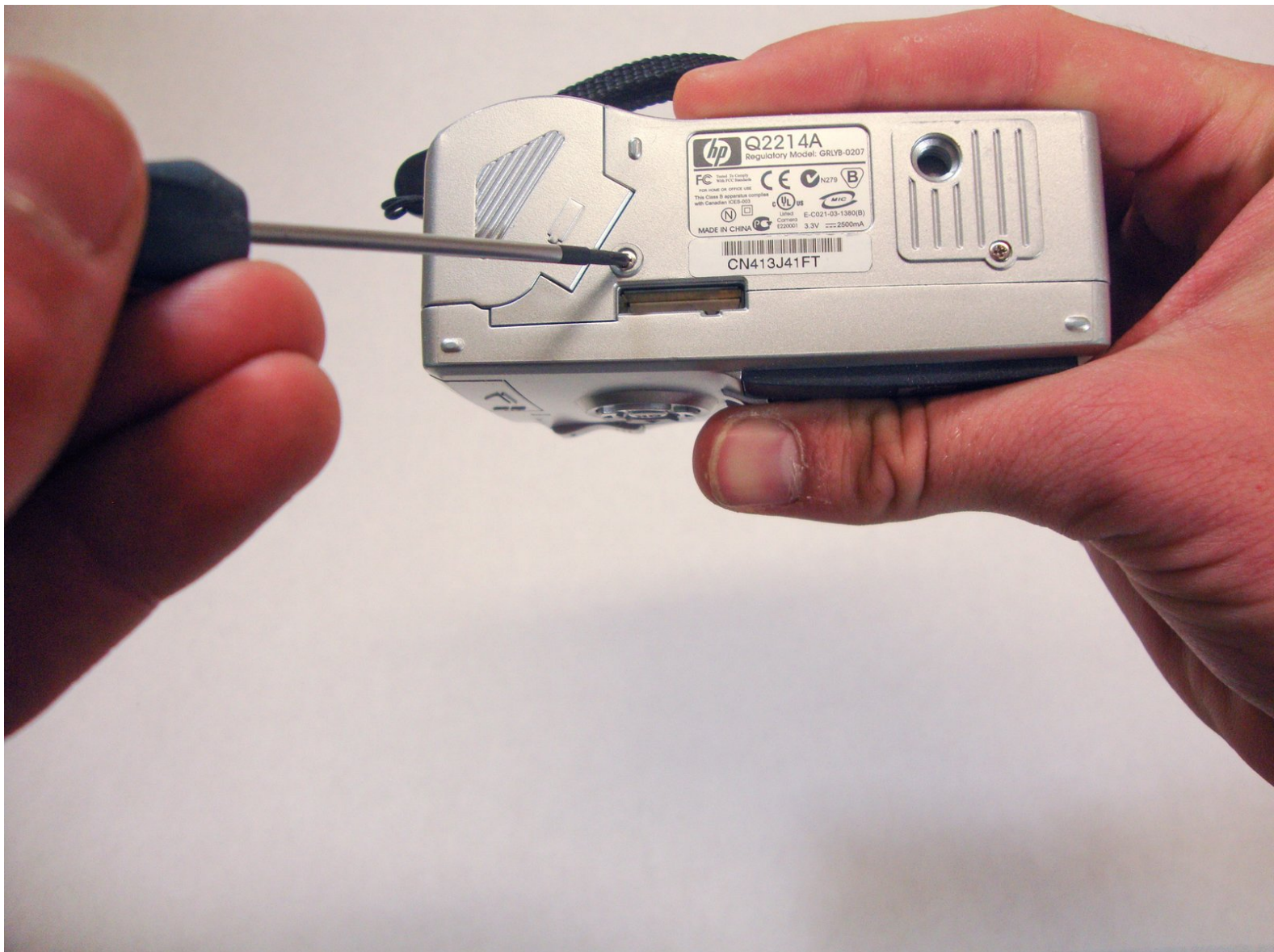




HP Photosmart 935 Plastic Casing Replacement

This guide will teach you how to install a new...

Written By: Clay Young



INTRODUCTION

This guide will teach you how to install a new case on your HP Photosmart 935 camera. If your camera case is cracked or starting to come apart, this guide will help you replace it with a new one.

TOOLS:

- [Phillips #00 Screwdriver](#) (1)
-

Step 1 — Batteries



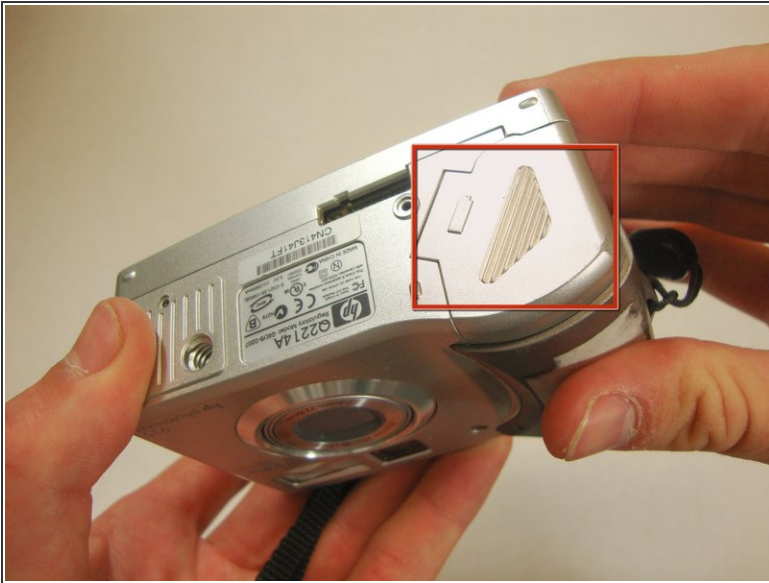
- Flip the camera over so the bottom of the camera is facing you.

Step 2



- Turn the mode dial to the OFF position.

Step 3



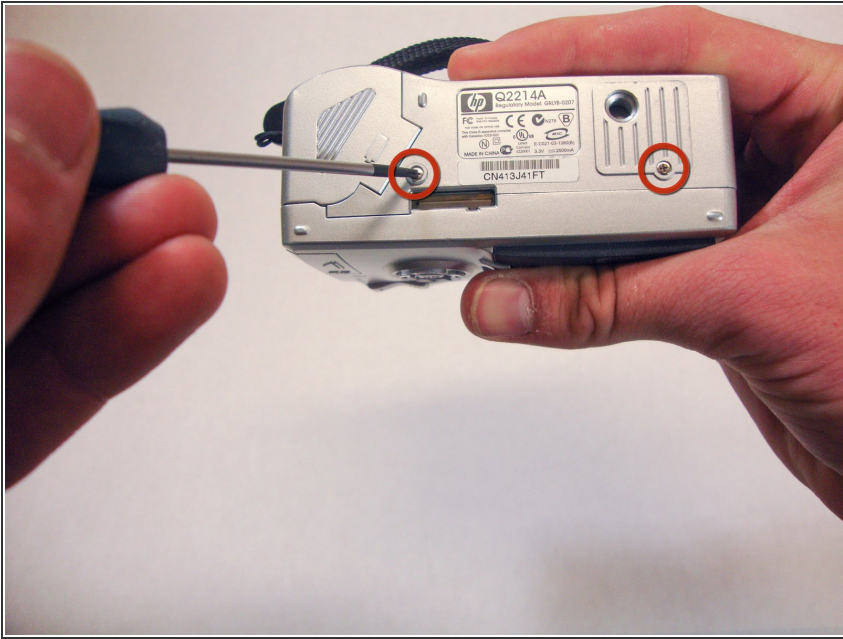
- Slide the bottom cover in the direction of the arrow to open it.

Step 4



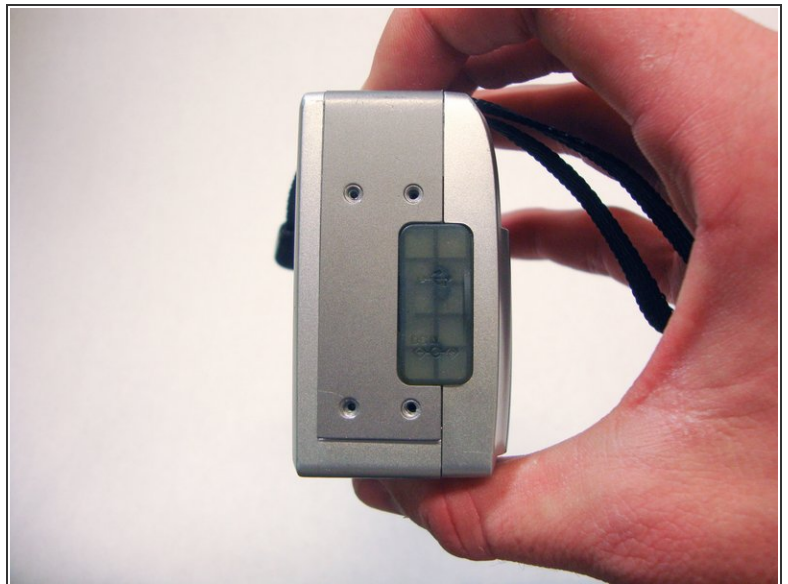
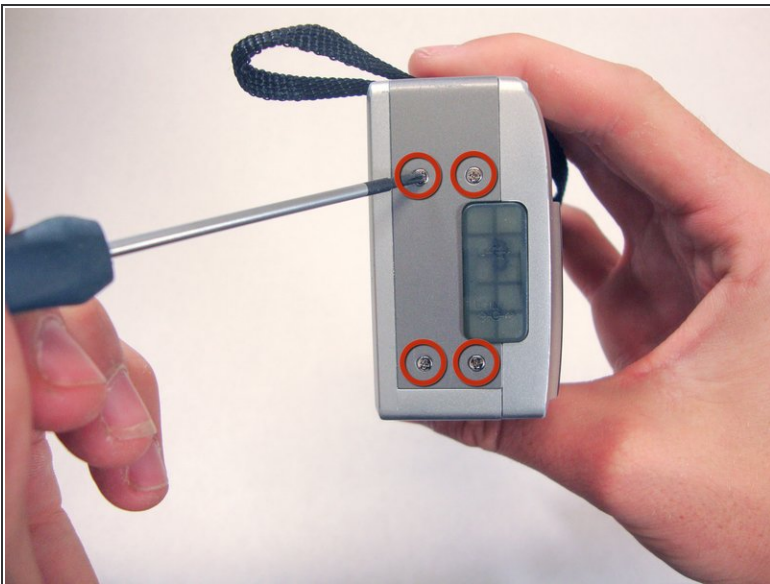
- Pull out the batteries.

Step 5 — Plastic Casing



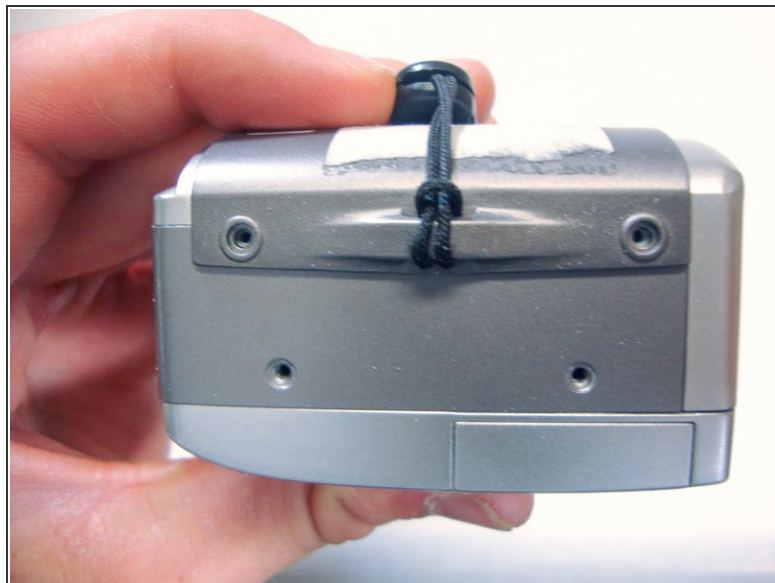
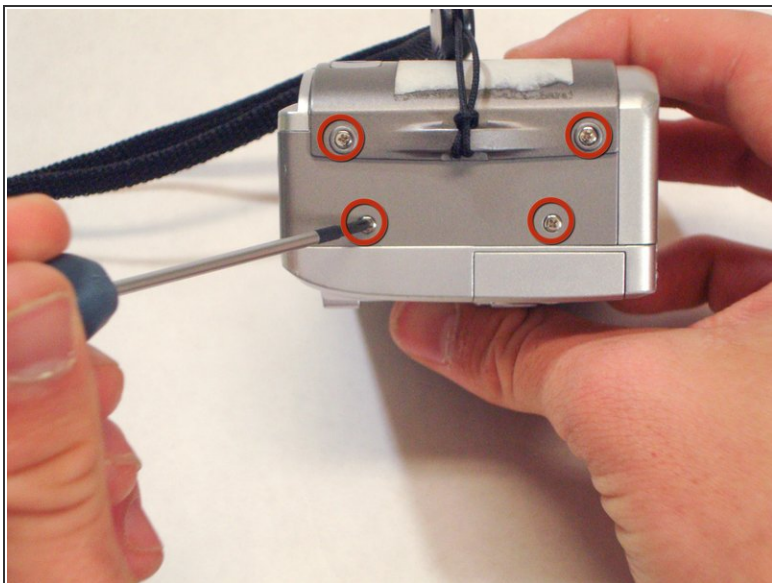
- Use a Phillips #00 screwdriver to remove the two 4.7 mm screws in the bottom of the plastic casing.

Step 6



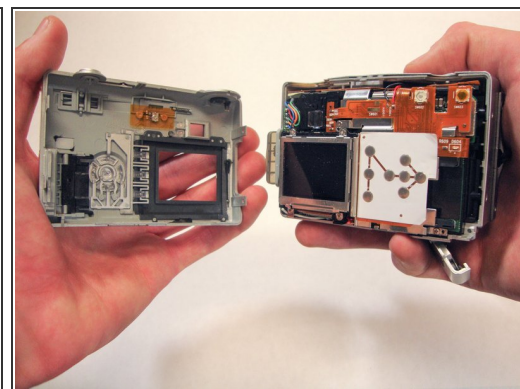
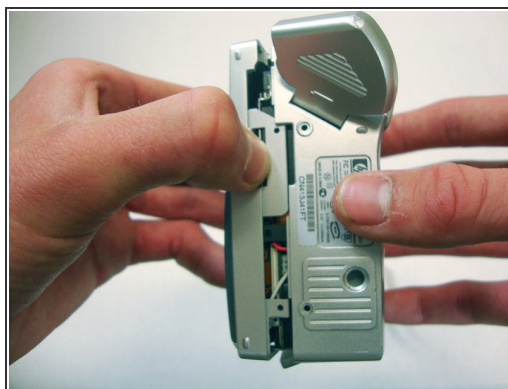
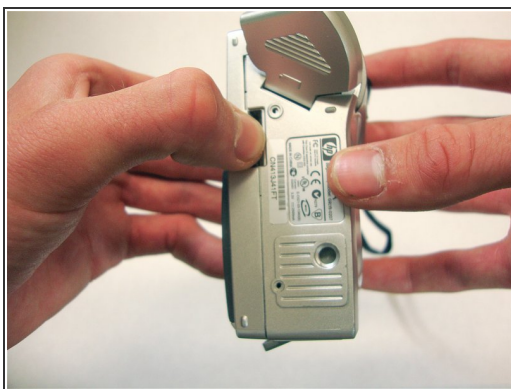
- Remove the four 4.7 mm screws on the left side of the camera.

Step 7



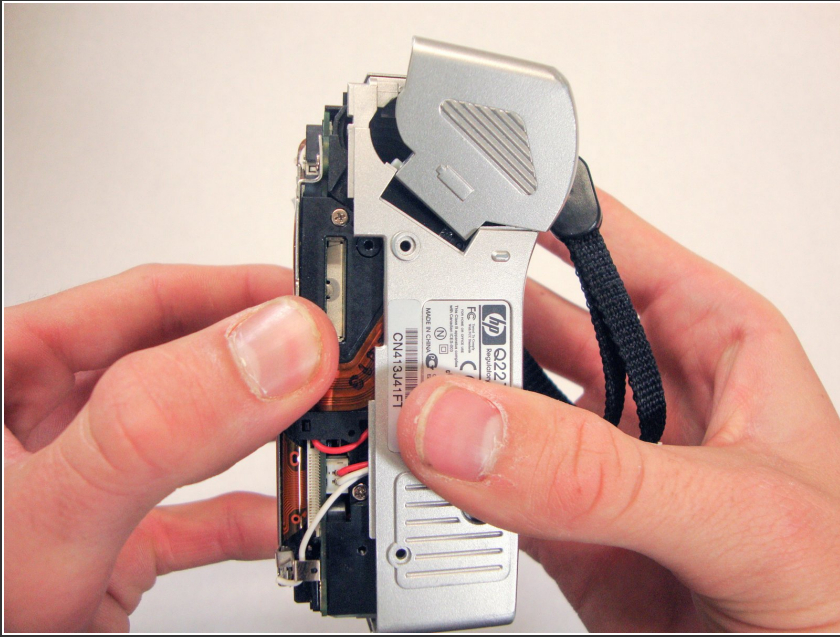
- Remove the four 4.7 mm screws on the opposite side of the camera.

Step 8



- Use your thumbs to pry the case apart.
- ⓘ It is easiest to pry the case apart if you start at the bottom.
- ⓘ The case should come apart with minimal effort. If it doesn't, you can use a spudger or plastic opening tool to pry it open.

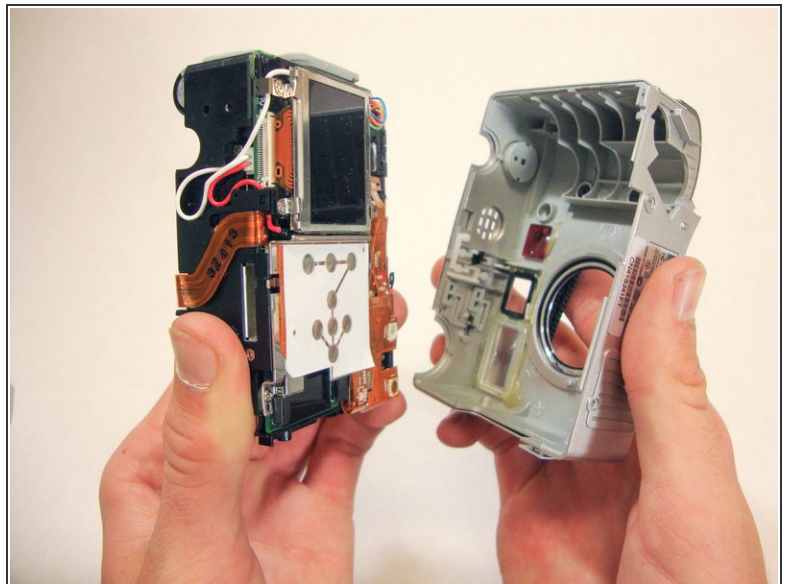
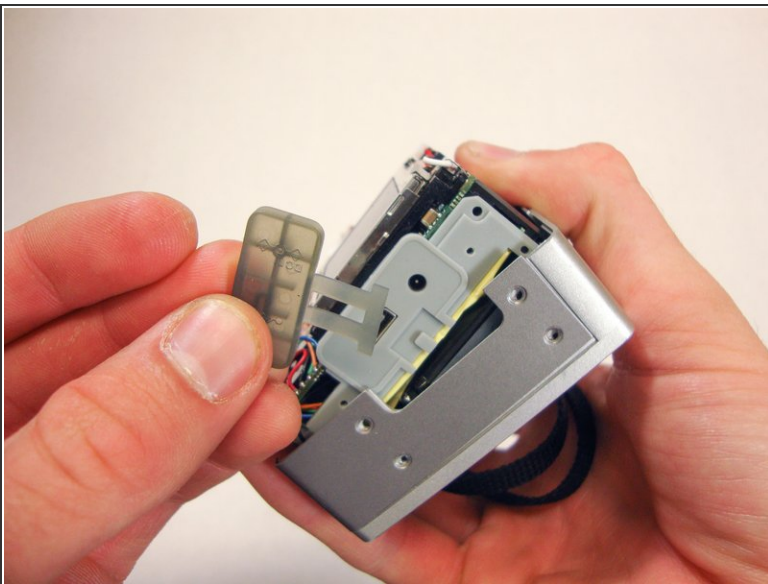
Step 9



⚠ This step requires a significant amount of force.

- Pull the bottom half of the inner camera out of the case by half an inch. This may be difficult.

Step 10



⚠ While pulling the camera out of the case, note the small soft plastic cover on the side. This cover will detach from the rest of the device.

- Once the bottom of the inner camera is pulled out, pull the device out completely.
- i** Use a firm grasp when removing the device from the case for stability and control.

This document was generated on 2022-12-18 04:25:22 PM (MST).

To reassemble your device, follow these instructions in reverse order.