



# Lenovo G70-80 Screen Replacement

Written By: Alexis Buford





## TOOLS:

- [Phillips #00 Screwdriver](#) (1)
  - [iFixit Opening Tool](#) (1)
-

## Step 1 — Battery



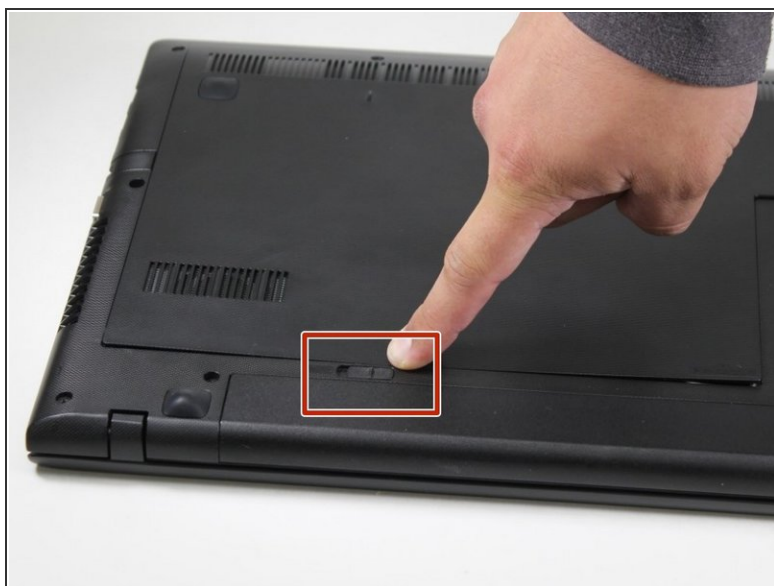
- Turn off the computer.
- Set the computer upside down with the back facing up.

## Step 2



- ❗ Located directly below the bottom plate will be two switches near where the battery is located.
- With the battery facing you, slide the battery switch on the right side of the laptop towards the right.
- ❗ To ensure the switch on the right is unlocked, look for a red indicator next to the switch.

## Step 3



- Slide the left battery release switch to the left.
- While holding the switch to the left, lift the battery to remove it from the computer.

## Step 4



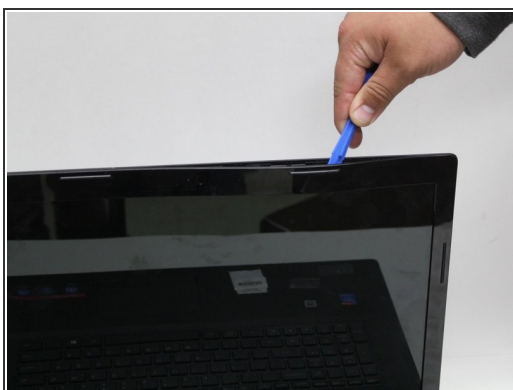
- Remove the battery.

## Step 5 — Screen



- Open the laptop to face the screen.

## Step 6



- Use a plastic opening tool to pull the bezel forward and release it from the top of the LCD panel.

 The bezel is the plastic frame around the laptop screen.



## Step 7



- After the top part of the bezel is released, use the plastic opening tool to completely remove the bezel.
- ❗ If you are having trouble removing the bezel from the LCD panel, pull both sides of the bezel towards you with your hands.

## Step 8



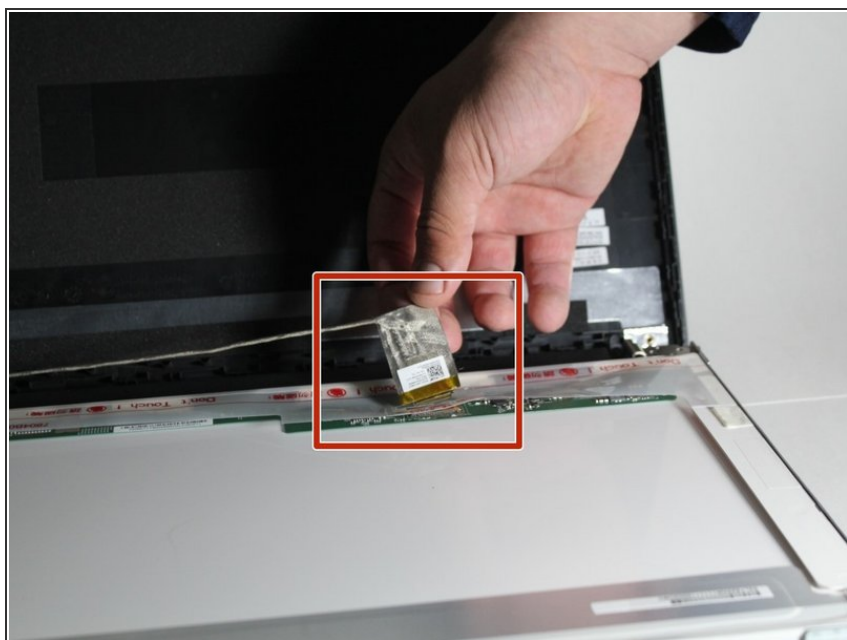
- Use a screwdriver to remove the screws that secure the LCD panel to the computer.
- ❗ Once the bezel is removed, you will see eight screws around the screen that secure the LCD panel to the computer.

## Step 9



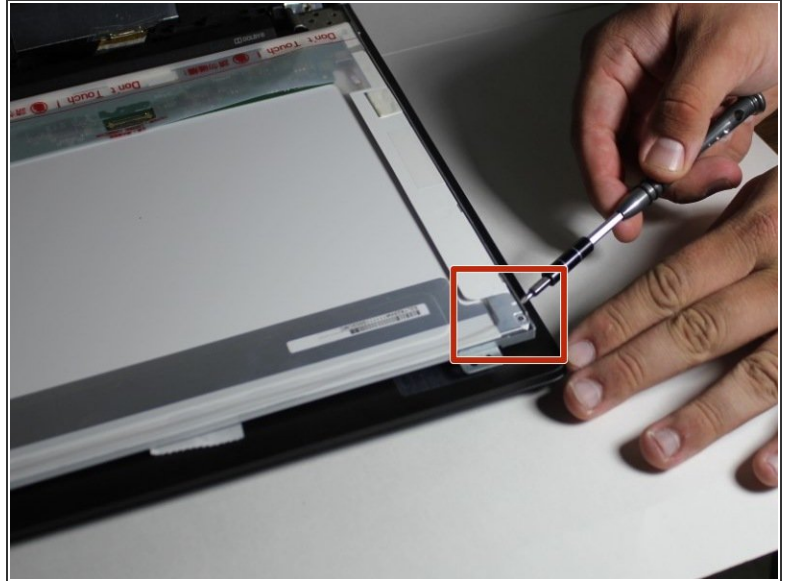
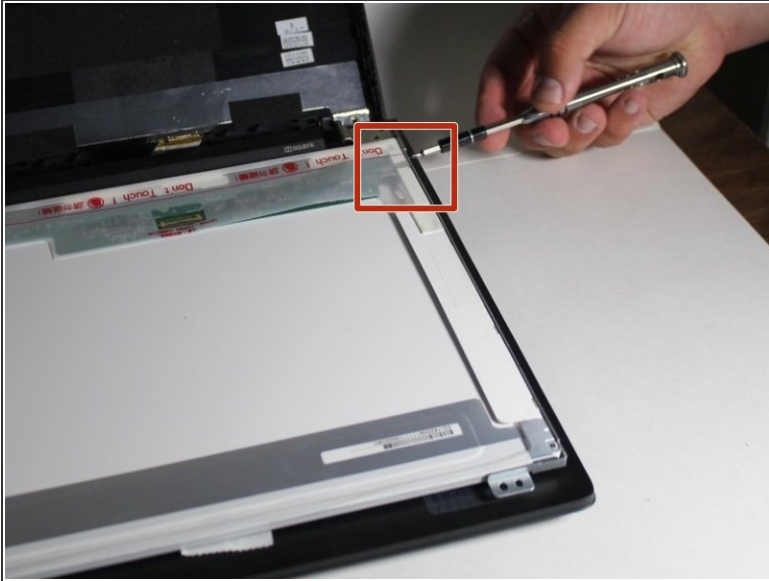
- Carefully separate the LCD panel from the plastic cover, placing it face down on the keyboard

## Step 10



- Disconnect the LCD panel from the computer by peeling the connector off.

## Step 11



- With a screwdriver, remove the four screws that mount the LCD panel onto the mounting arms.
- ⓘ There is one screw on each corner that connects to the mounting arms.

## Step 12



- Remove the LCD panel.



To reassemble your device, follow these instructions in reverse order.