



MacBook Pro 13" Function Keys Late 2016

Battery Disconnection

Safely disconnect the battery before undertaking a repair.

Written By: Jeff Suovanen



INTRODUCTION

Prerequisite-only guide to safely disconnect the battery before undertaking a repair.



TOOLS:

- [P5 Pentalobe Screwdriver Retina MacBook Pro and Air](#) (1)
 - [Suction Handle](#) (1)
 - [iFixit Opening Picks set of 6](#) (1)
 - [Tweezers](#) (1)
 - [Spudger](#) (1)
 - [T5 Torx Screwdriver](#) (1)
-

Step 1 — Lower Case



- ⚠ Before proceeding, unplug and power down your MacBook. Close the display and lay it on a soft surface, top-side down.
- Use a P5 Pentalobe driver to remove the six screws securing the lower case:
 - Two 6.2 mm screws
 - Two 5.3 mm screws
 - Two 3.4 mm screws
- 📌 Throughout this repair, [keep track of each screw](#) and make sure it goes back exactly where it came from to avoid damaging your device.

Step 2



- Apply a suction handle to the lower case near the front-center area of the MacBook Pro.
- Lift the suction handle to create a slight separation between the lower case and the chassis.

Step 3



- Insert one corner of an opening pick into the space between the lower case and the chassis.
- Slide the opening pick around the nearest corner and halfway up the side of the case.
 - ⓘ This releases the first of the hidden clips securing the lower case to the chassis. You should feel and hear the clip pop free.

Step 4



- Repeat the previous step on the opposite side, sliding your opening pick under the lower case and up the side to pop the second clip free.

Step 5



- Insert your opening pick once again under the front edge of the lower case, near one of the two centermost screw holes.
- Give the pick a firm twist to pop free the third clip securing the lower case to the chassis.
- Repeat this procedure near the other of the two centermost screw holes, popping the fourth clip free.

Step 6



- Pull the lower case firmly towards the front of the MacBook (away from the hinge area) to separate the last of the clips securing the lower case.
 - ❗ It may help to pull first at one corner, then the other.
 - ⚠ This may require a lot of force.

Step 7



- Remove the lower case.

Step 8 — Battery Connector



- Carefully peel up the large piece of tape covering the battery connector, on the edge of the logic board nearest the battery.
- Remove the tape.

Step 9



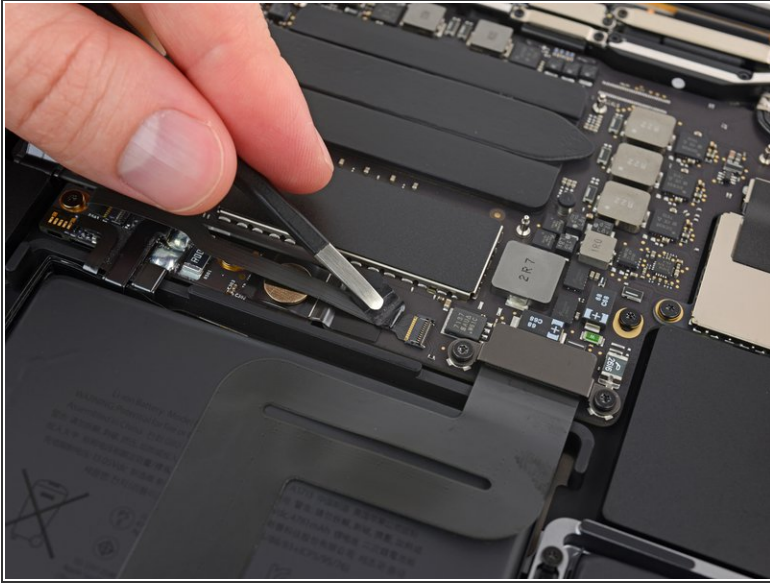
- Gently peel back the small piece of tape covering the battery board data cable connector.
 - ❗ The tape is integrated into the ribbon cable and will not detach completely. Simply peel it back enough to access the connector.

Step 10



- Use the tip of a spudger to flip up the small black locking tab securing the cable in its connector.

Step 11



- Disconnect the battery board data cable by sliding it out from its socket.
- Slide parallel to the logic board, in the direction of the cable.

Step 12



- Fold the battery board data cable back and out of the way.
- ☑ If you're replacing your battery, you may need to completely remove and transfer this cable to your new battery. Disconnect both ends and carefully remove the cable. During installation, be careful not to install it upside-down or backwards—note the orientation in the photos.

Step 13



- Use a T5 Torx driver to remove the 3.7 mm pancake screw securing the battery power connector.

Step 14



- Use a spudger to gently lift the battery power connector, disconnecting the battery.
- Lift the connector high enough so that it stays separated from its socket. If it accidentally makes contact during the course of your repair, it could damage your MacBook Pro.

To reassemble your device, follow these instructions in reverse order.