



# Blu Studio 5.5 Back Camera Replacement

The back camera is an important tool for any...

Written By: Luis Gomez-Atehortua



# INTRODUCTION

The back camera is an important tool for any mobile device as it is usually the camera with the highest quality for picture taking and this guide will show you how to properly find and replace it.

---

## TOOLS:

[iFixit Opening Tool](#) (1)

*Not essential, but may be easier than opening device by hand*

[Tweezers](#) (1)

[Anti-Static Wrist Strap](#) (1)

[Phillips #000 Screwdriver](#) (1)

---

## Step 1 — Battery



- Locate the notch to remove the back panel at the lower left corner of the panel.
- Insert the plastic opening tool or a fingernail into the notch.
- Apply force upwards until back panel becomes loosened.

## Step 2



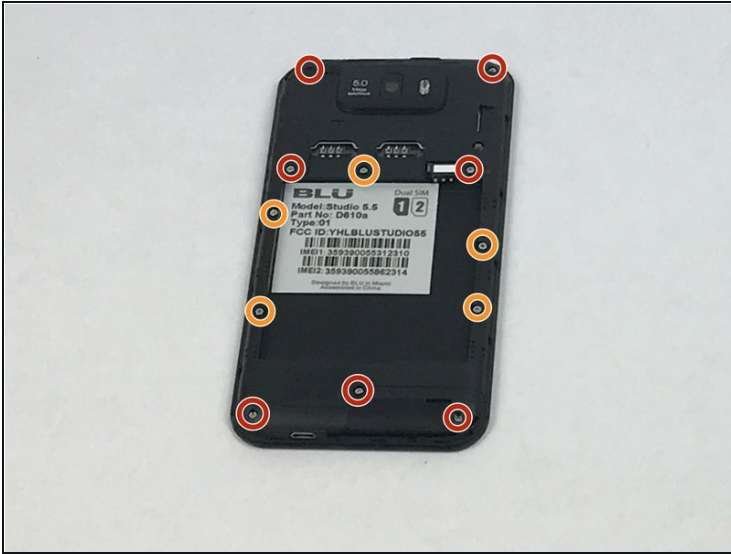
- Remove the loosened back panel and set aside.
- Locate the notch to remove the battery.

## Step 3



- Insert a plastic opening tool or your fingernail into the notch and apply force upwards until the battery is loosened.
- Remove the battery and set aside.

## Step 4 — Back Panel Assembly



- Locate all twelve screws along the back panel:
  - Seven 5mm screws.
  - Five 3.5mm screws.
- Using a Phillips #000 screwdriver, remove all twelve screws.



## Step 5



- Now that all the screws have been removed, use a plastic opening tool to carefully pry at each of the corners until loosened.

**⚠ Be extra careful when prying open as it may damage or snap the thin sides of the panel.**

- Place the plastic opening tool inside the loosened panel and gently push upwards and move along the phone to remove the back panel.
- Remove the panel as if you were turning the page of a book.

## Step 6 — Motherboard



- Locate the motherboard that is above where the battery was removed.
- Remove the three screws holding down the motherboard to the phone.
- Locate all 7 flex cable connectors that are attached to the motherboard.

## Step 7



- Use tweezers to carefully grasp and unhook all 7 flex cable connectors.
- With the same tweezers, pry off the cable clasp that connects the motherboard to the sub PCBA.
- Once the motherboard is disconnected from all components, use the tweezers or your fingers to remove it from the phone assembly.

⚠ Use the [Anti-Static Wrist Strap](#) to eliminate the possibility of introducing a static force that may damage the motherboard components.

## Step 8 — Back Camera



- After the motherboard has been removed you will see the back camera, which is glued to the phone assembly.
- Using a pair of [tweezers](#) grip onto the sides of the camera and gently pry it off the panel.
- ☑ Make sure that when you put in the replacement it is adhered to the phone panel and the flex cable connector goes in through the motherboard opening.

---

To reassemble your device, follow these instructions in reverse order.