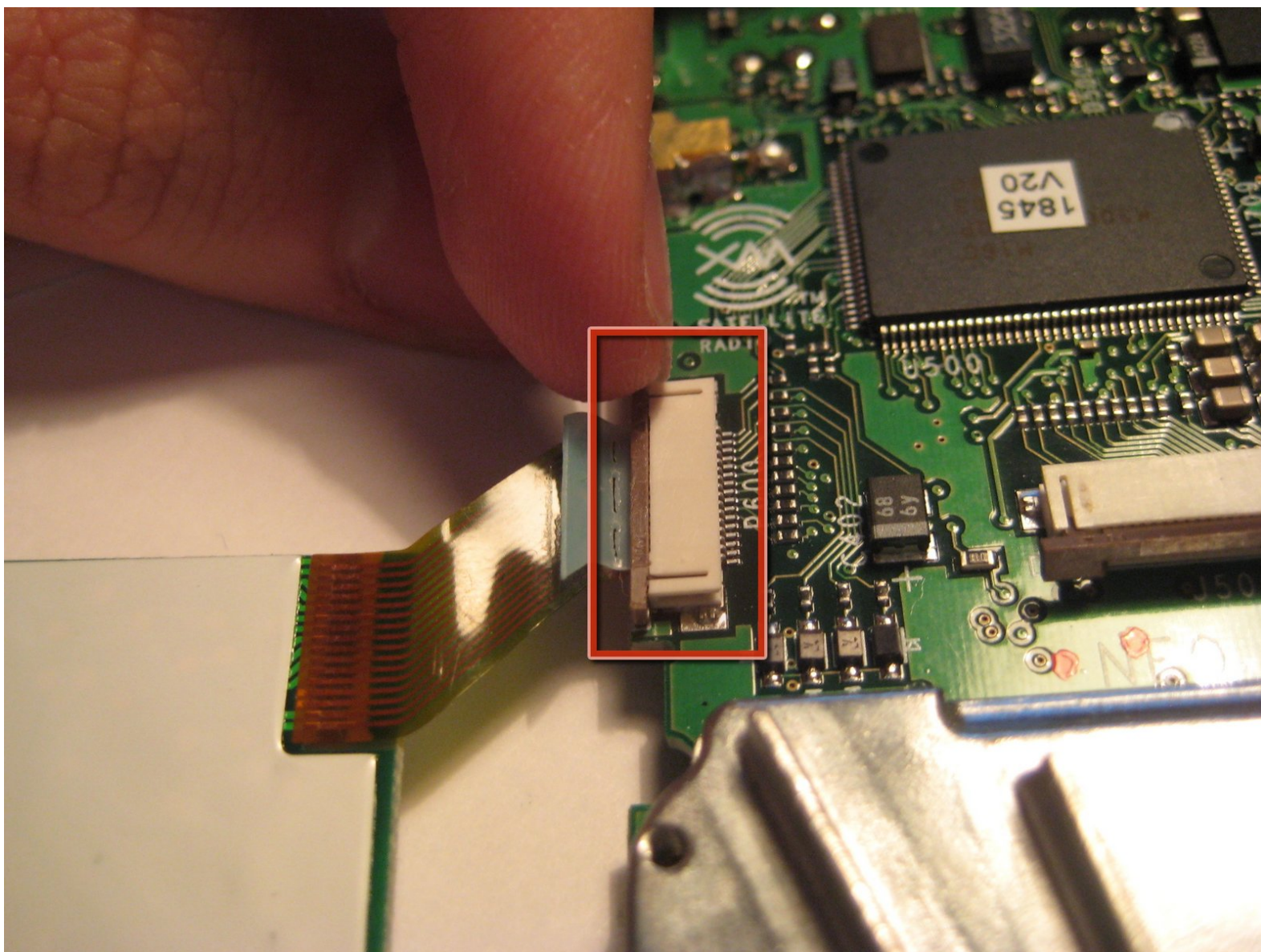




# Removing Delphi MyFi XM2GO Keypad

This guide demonstrates how to remove the keyboard.

Written By: Aubrey





## TOOLS:

- [T6 Torx Screwdriver](#) (1)
-

## Step 1 — Battery Cover



- Locate the large button on the top of the device.
- Push down on the button and slide the cover away from the button.

 The battery removal tab may pop up.

## Step 2 — Battery



- Grab the red pull tab and pull down to unlock the latch.
- Pull the battery out.



## Step 3 — Motherboard



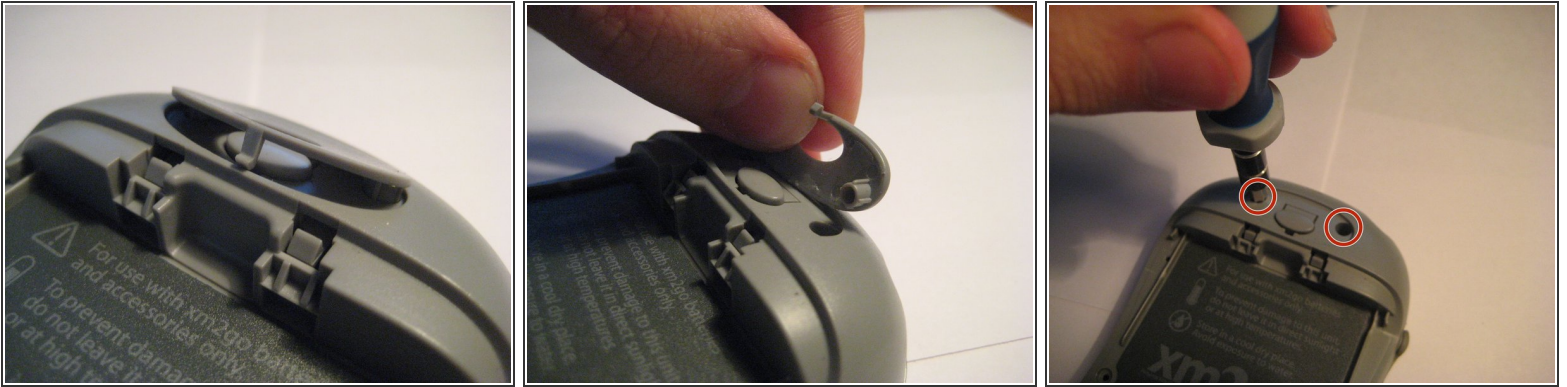
- Remove the four screws from the bottom of the device using a T6 Torx screwdriver.

## Step 4



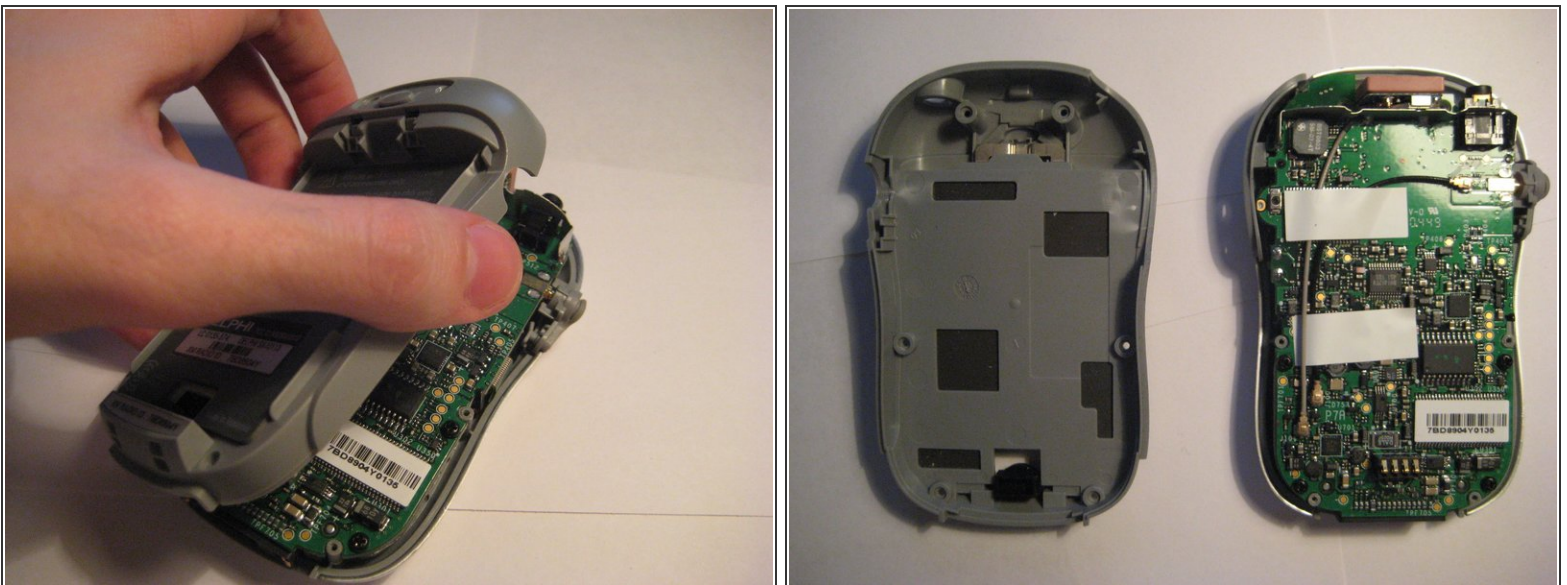
- Remove the button cover on the back of the device by prying it up with a spudger or your thumb nail.

## Step 5



- Remove the two screws under the button using the T6 Torx screwdriver.

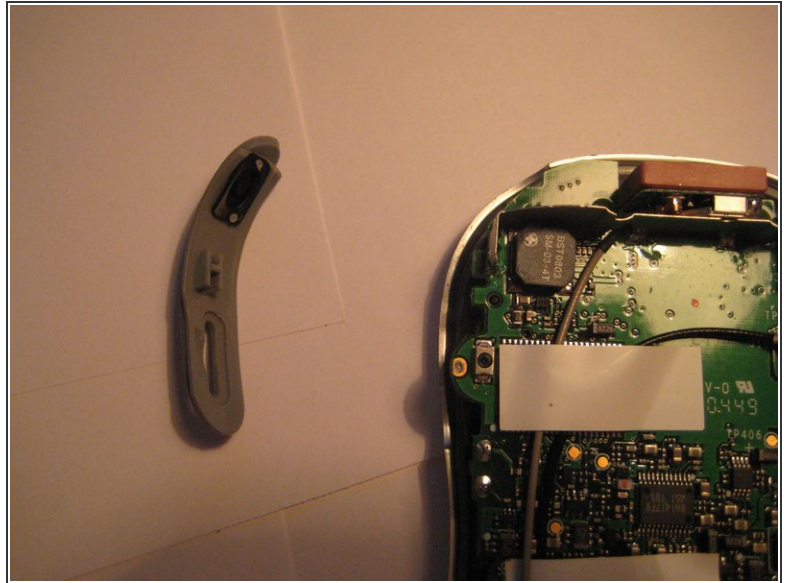
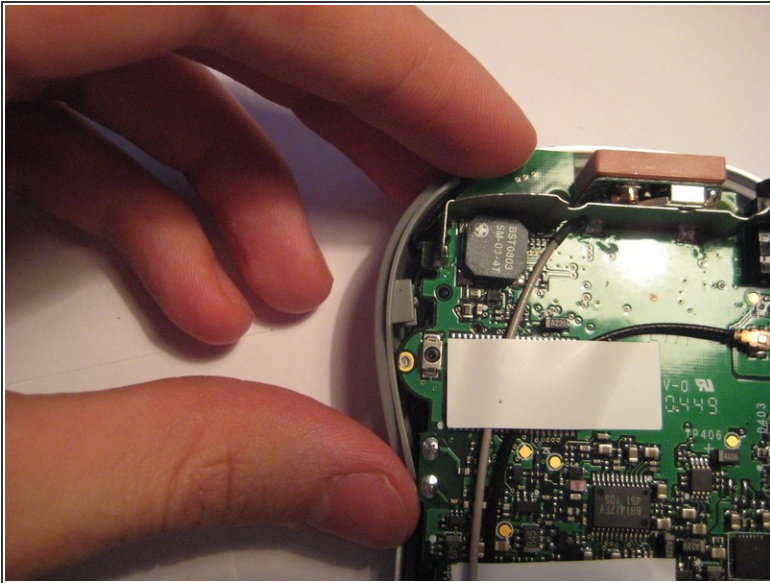
## Step 6



- Remove the back cover.

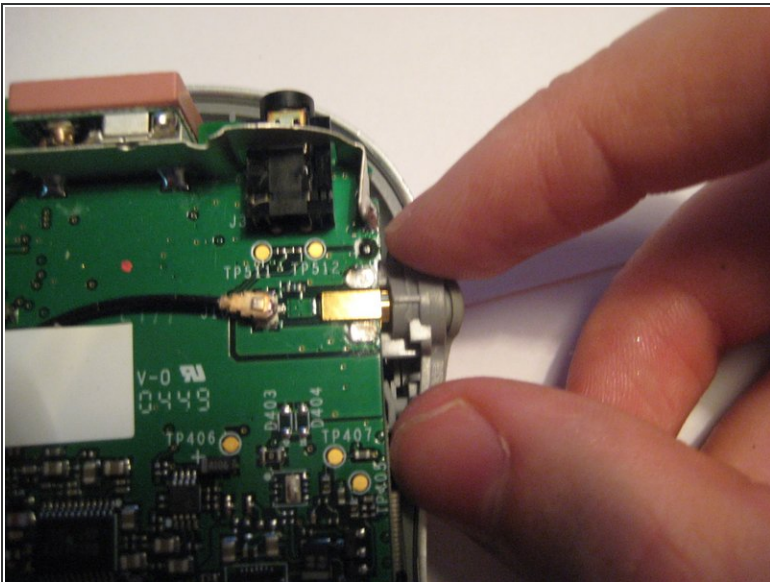


## Step 7



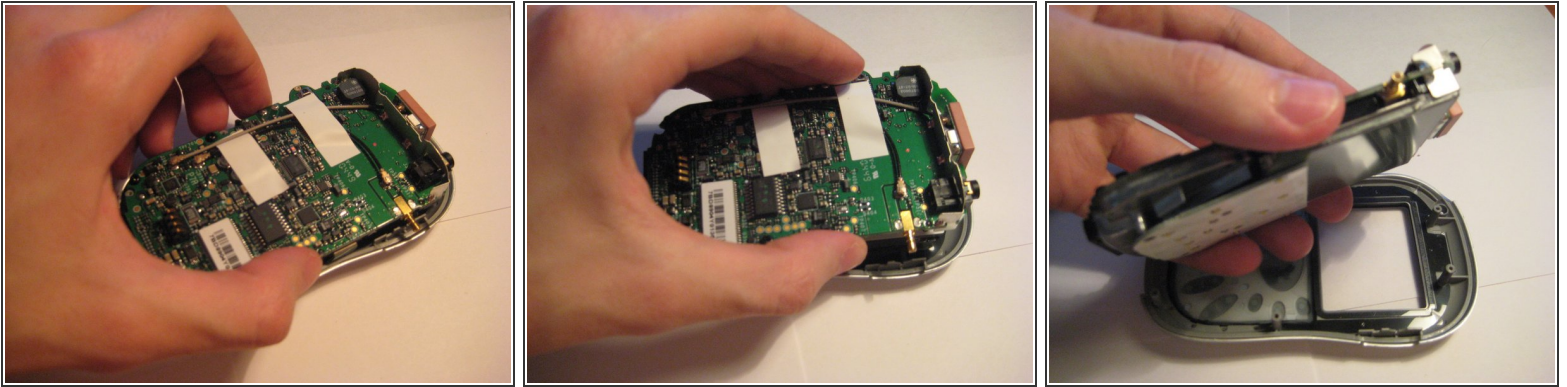
- Remove the power button by pulling it to the left.

## Step 8



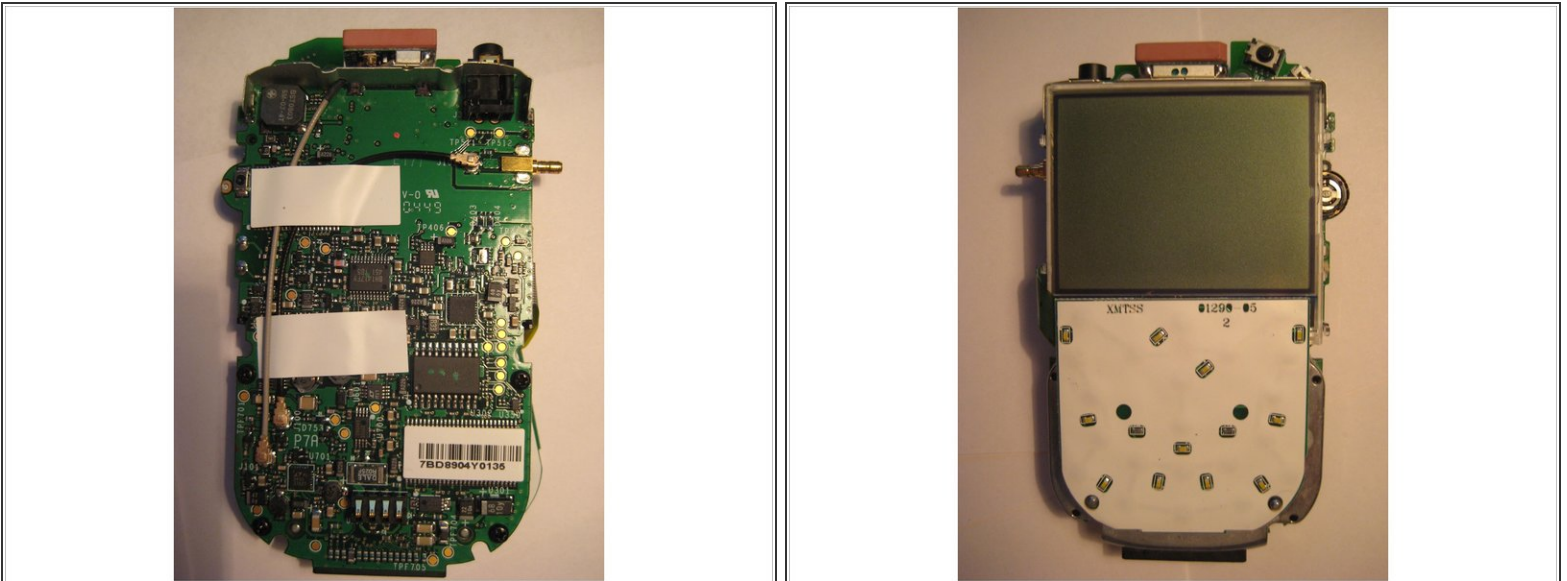
- Remove the plastic antenna extension connector on the right side of the device.

## Step 9



- Pull up on the motherboard to remove it from the device.
- ⓘ The LCD screen and keypad are only connected to the motherboard with ribbon cables. They will hang down as the motherboard is removed.

## Step 10 — Removing Delphi Myfi XM2GO LCD Screen



- The logic board must be exposed to begin.
- Flip the device over (see second picture).

**⚠ CAUTION:** The keyboard is loosely attached by a ribbon cable and may move when the device is flipped.

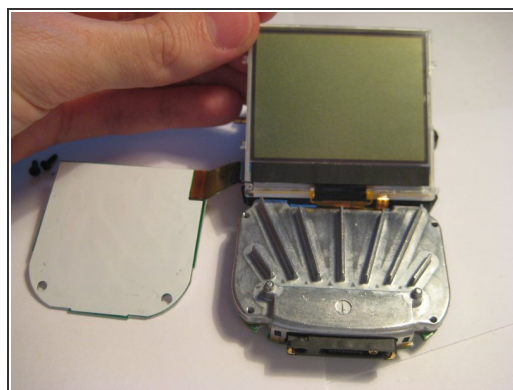
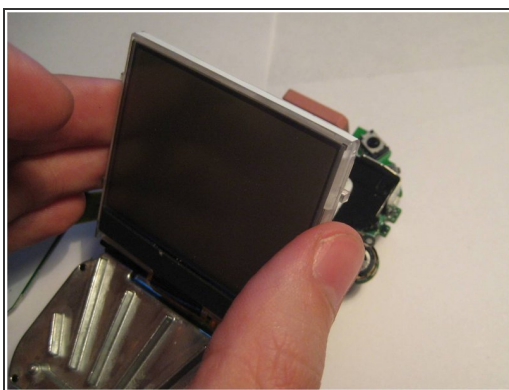
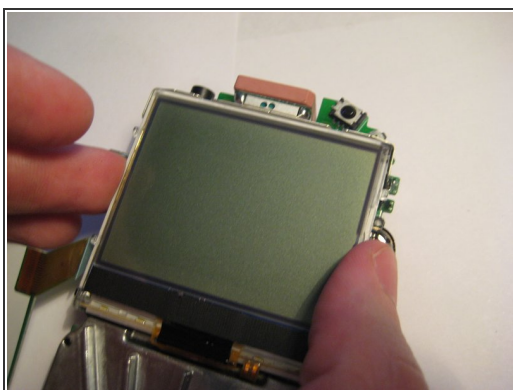


## Step 11



- Lift up the keyboard carefully from the right side, flipping to the left.
- ⓘ NOTE: The keyboard is attached on the left side by a ribbon cable. Do not remove it completely yet.

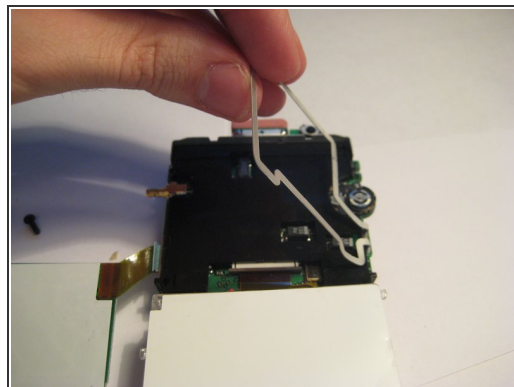
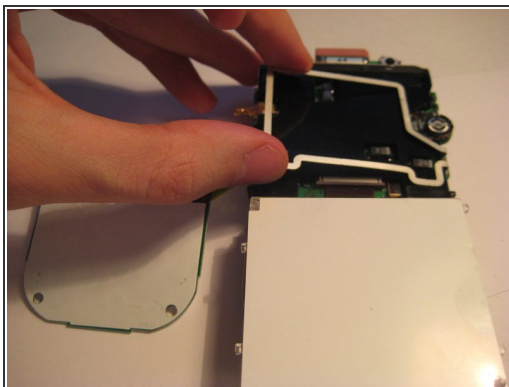
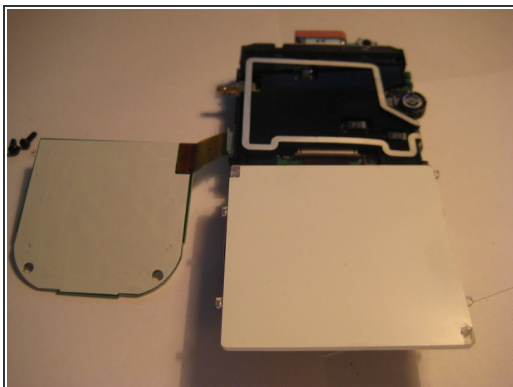
## Step 12



- Pivot the LCD screen, pulling on the top and sides and keeping the bottom attached.



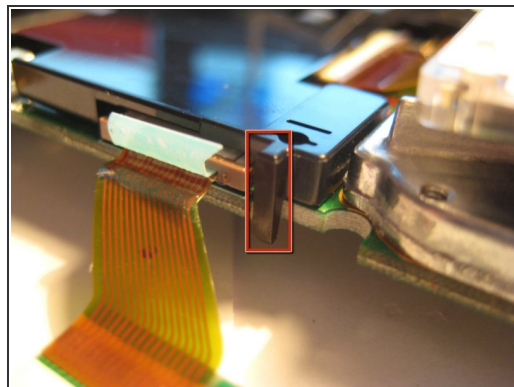
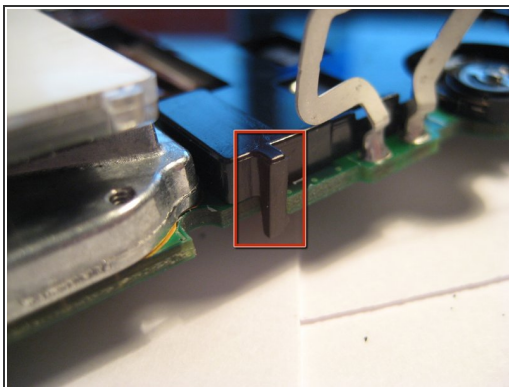
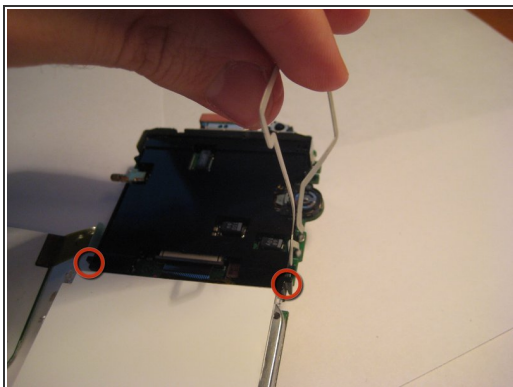
## Step 13



- Continue to pivot the screen until it is lying on its face.
- Pivot the wire frame, that was under the LCD, from the left side.

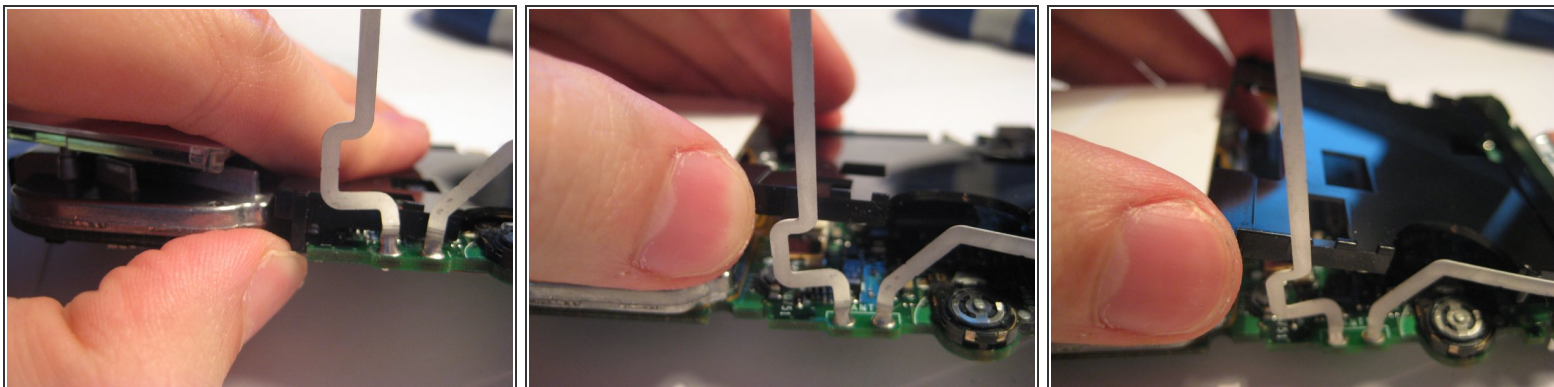
**⚠ CAUTION:** The wire bends as the frame pivots. Use the least amount of force necessary.

## Step 14



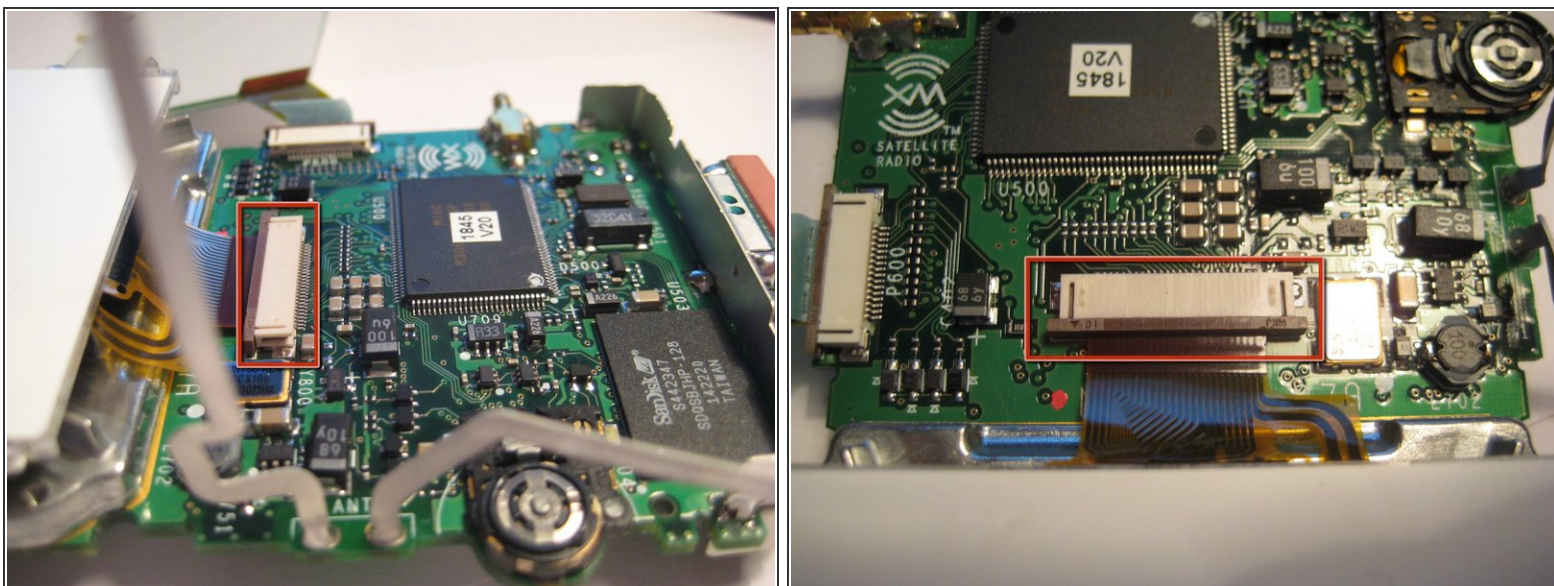
- With the frame perpendicular to the device, locate the two black, plastic tabs shown in the two red circles.
- The boxes show more detailed views in the following pictures.

## Step 15



- With both hands, pull the tabs outwards to release the plastic cover from the board.
- Once the tabs are disengaged, pivot the plastic cover upwards.
- After the cover is pivoted slightly, remove it from the device.

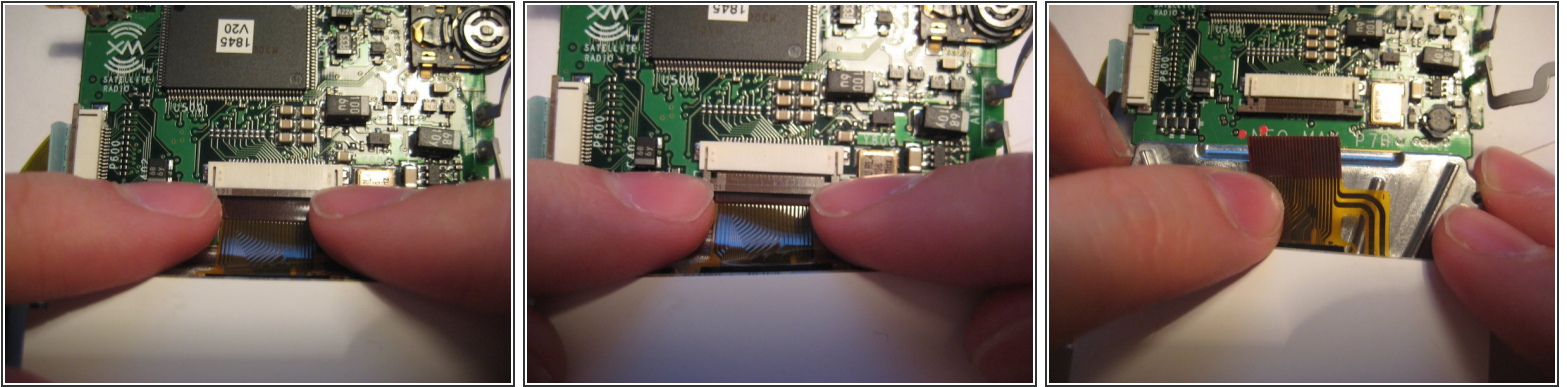
## Step 16



- After the plastic cover is removed, locate the white, ribbon connector highlighted by the red square.
- Rotate the device 90 degrees counterclockwise to remove the ribbon connector.



## Step 17



- To remove the ribbon cable from the board, catch the sides of the connector with fingernails and pull downward.

 **CAUTION:** The connector is delicate.

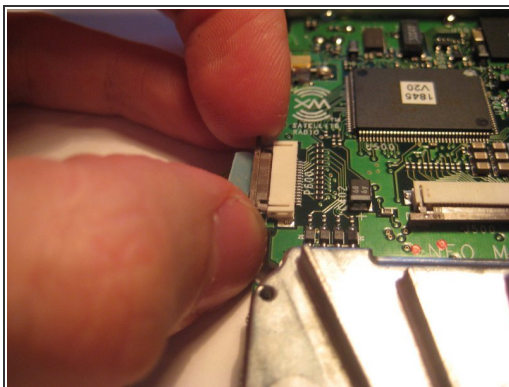
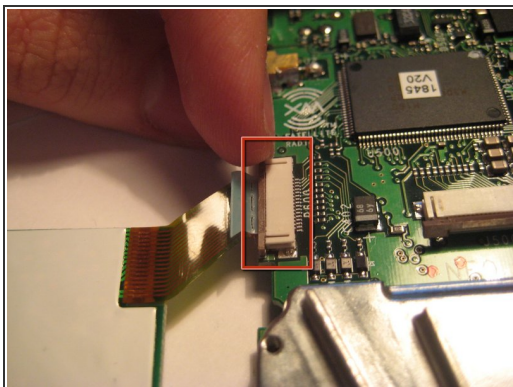
- After the latch is pulled down, the ribbon cable is free to slide out of the connector housing.

## Step 18



- After following the prerequisite steps in the guide, the components are laid out as depicted in the picture.
- The LCD screen is highlighted in red.

## Step 19 — Removing Delphi MyFi XM2GO Keypad



- Locate the white ribbon connector attached to the keyboard.
- Catch the sides of the connector with fingernails and pull outward.

⚠ **CAUTION:** The connector is delicate.

- After the latch is pulled out, the ribbon cable is free to slide out of the connector housing.

## Step 20



- After following the prerequisite steps and the steps of this guide, all of the components should look like this.
- The keyboard is highlighted in red.

To reassemble your device, follow these instructions in reverse order.



