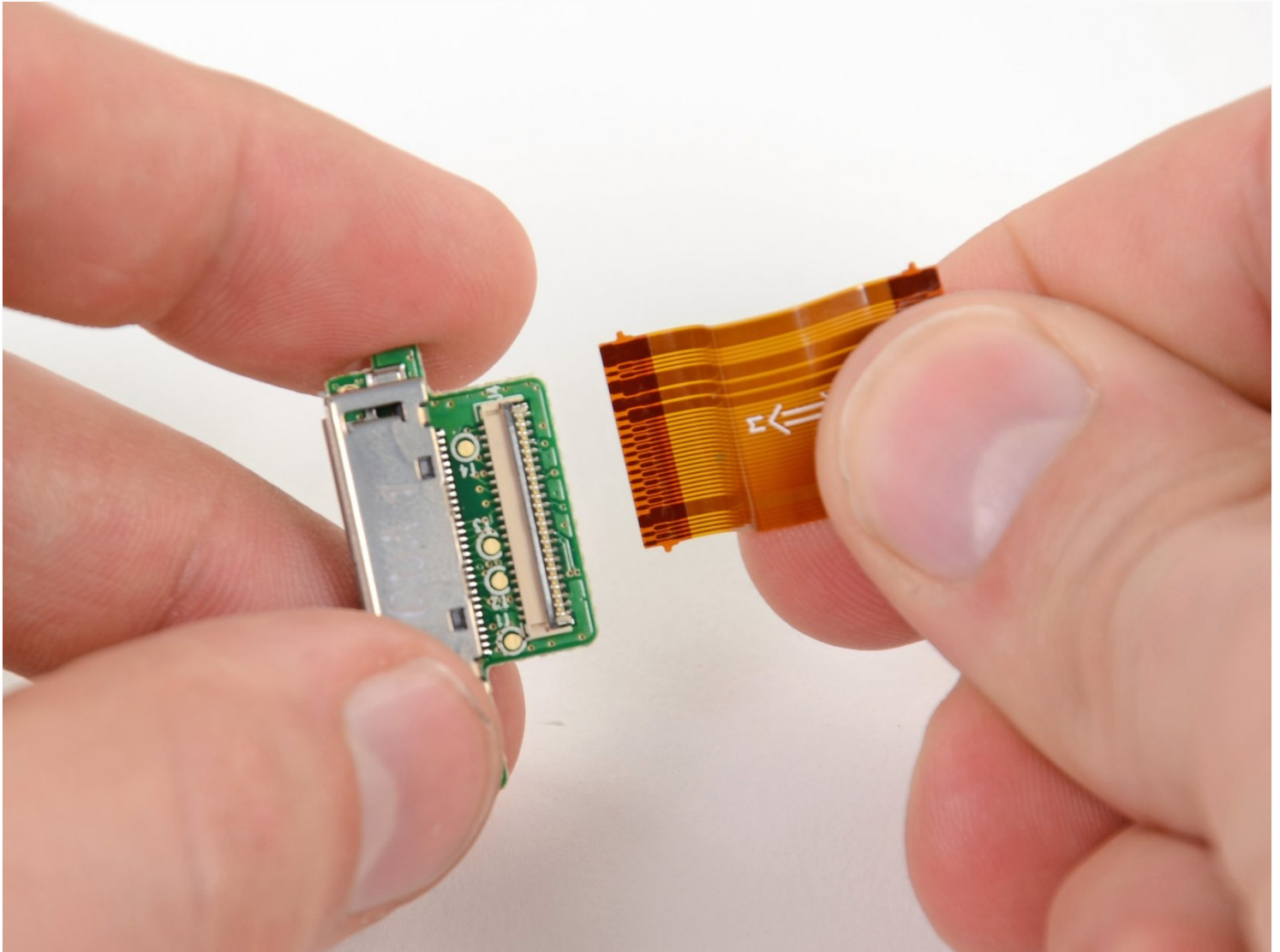




GoPro HD Hero2 SD Board

Dude 1: Dude! Check out this sweet video I just...

Written By: David Hodson



INTRODUCTION

Dude 1: Dude! Check out this sweet video I just made of me mountain biking through an alligator-filled swamp! Here, take my SD card.

Dude 2: Dude, there's nothing here. It's just an empty 32 GB SD card. I should've known that you weren't hardcore.

Dude 1: No dude, I swear it happened! My SD card reader must be dead.

Don't be like Dude 1. Make sure your precious memories are recorded to your SD card and replace a faulty SD board in your GoPro.

TOOLS:

[Tweezers](#) (1)

[iFixit Opening Tool](#) (1)

[Spudger](#) (1)

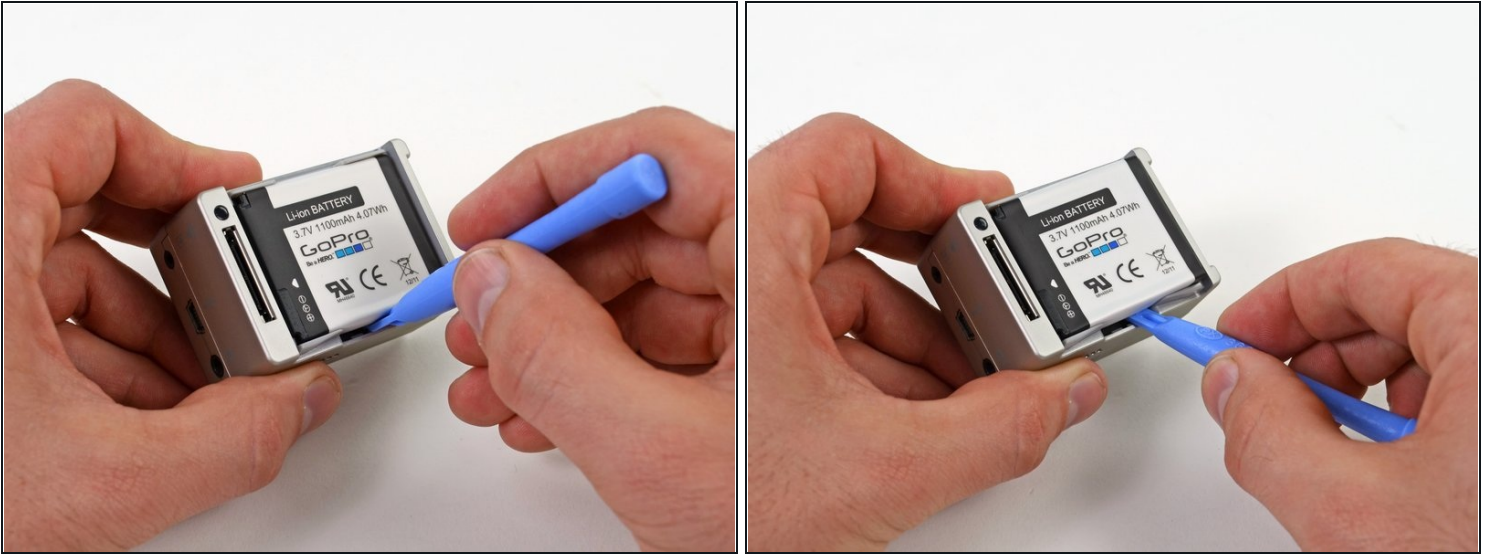
[Phillips #00 Screwdriver](#) (1)

Step 1 — Back Cover



- Place your thumb on the indentation in the back case on the side of the GoPro.
- Gently press down with your thumb and lift the back cover away from the case to remove it.

Step 2 — Battery



- Slide a plastic opening tool between the battery and the rear case.
- Gently pry the battery up and out of the rear case.

Step 3



- Remove the battery from the case.

Step 4 — Rear Case



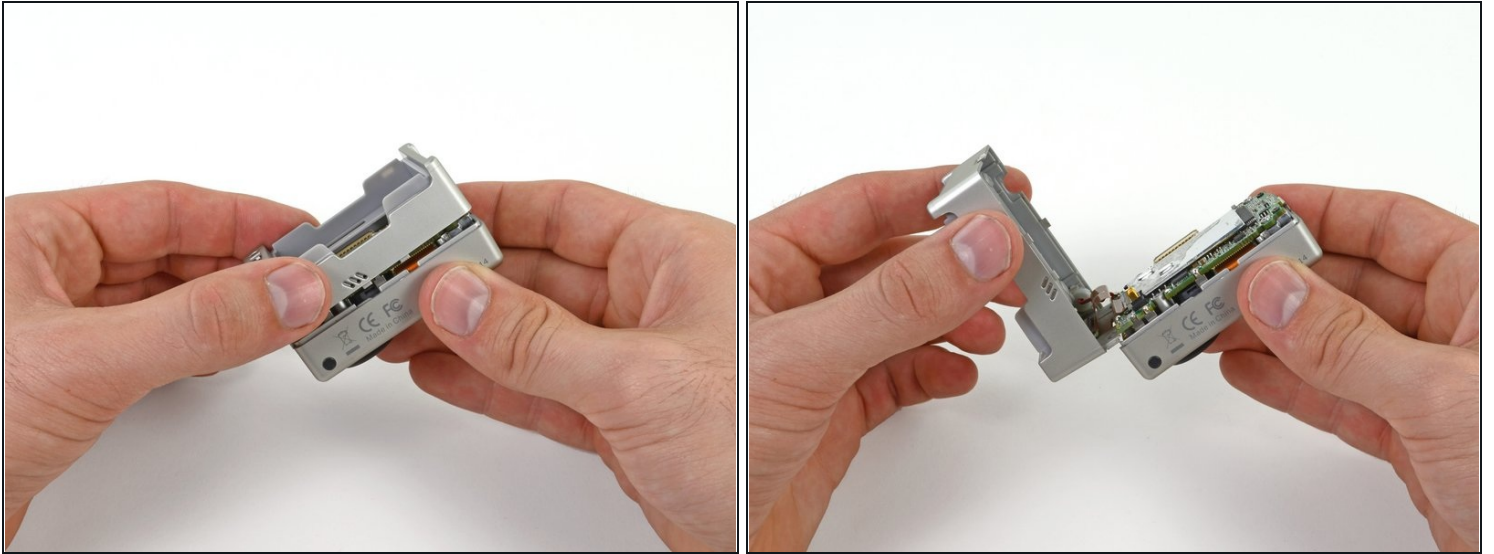
- Remove the four Phillips #00 screws securing the rear case to the rest of the device:
 - Two 5.5 mm coarse thread screws.
 - Two 4.4 mm fine thread screws.

Step 5



- Slide the edge of a plastic opening tool underneath the sticker on the rear cover and gently peel the sticker up.
- Once you have enough of the sticker peeled up with the plastic opening tool, grab an edge of it with your fingers and pull it off completely.

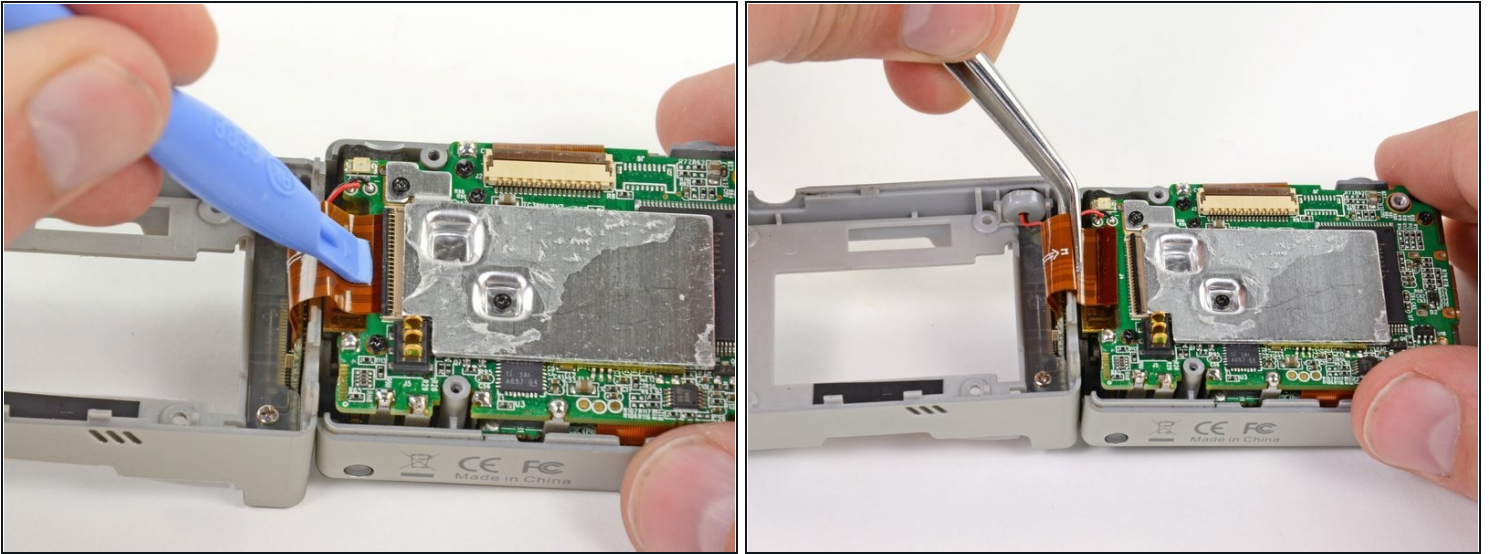
Step 6



- Grasp the rear case and lift it off of the front case.

⚠ Do not try to completely remove the rear case yet, as it is still attached by the display port ribbon cable.

Step 7



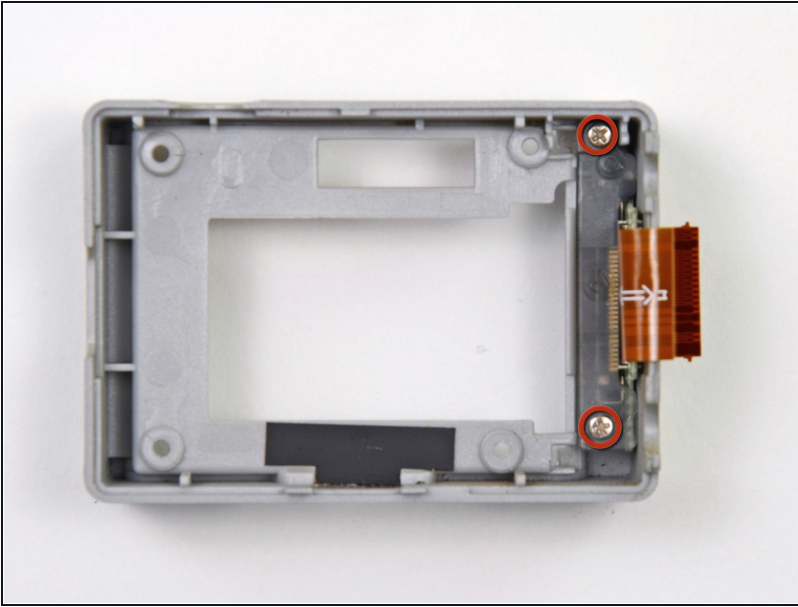
- Using a plastic opening tool or your fingernail, flip up the locking tab on the SD board ribbon cable ZIF connector on the motherboard assembly.
⚠ Be careful that you are prying on the locking tab, and not the connector itself.
- Use a pair of [tweezers](#) to remove the SD board ribbon cable from its connector on the motherboard.

Step 8



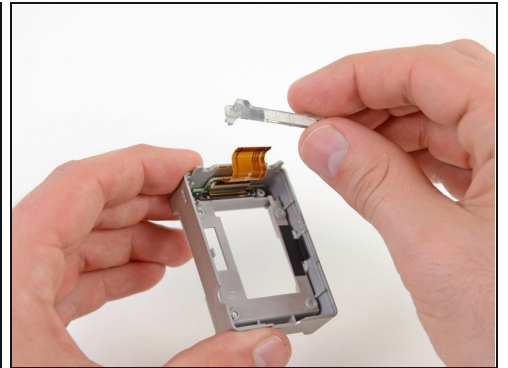
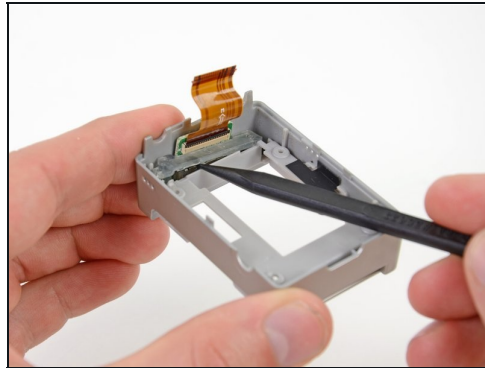
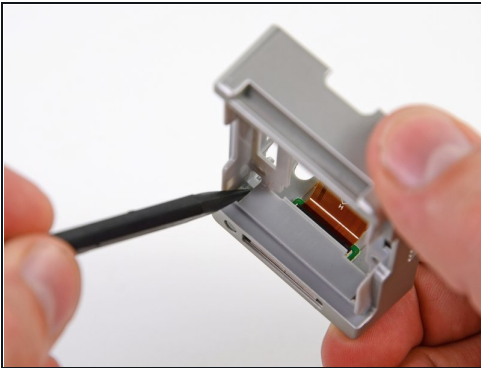
- Lift the speaker out of the rear case with the tip of a spudger.
- Remove the rear case.

Step 9 — SD Board



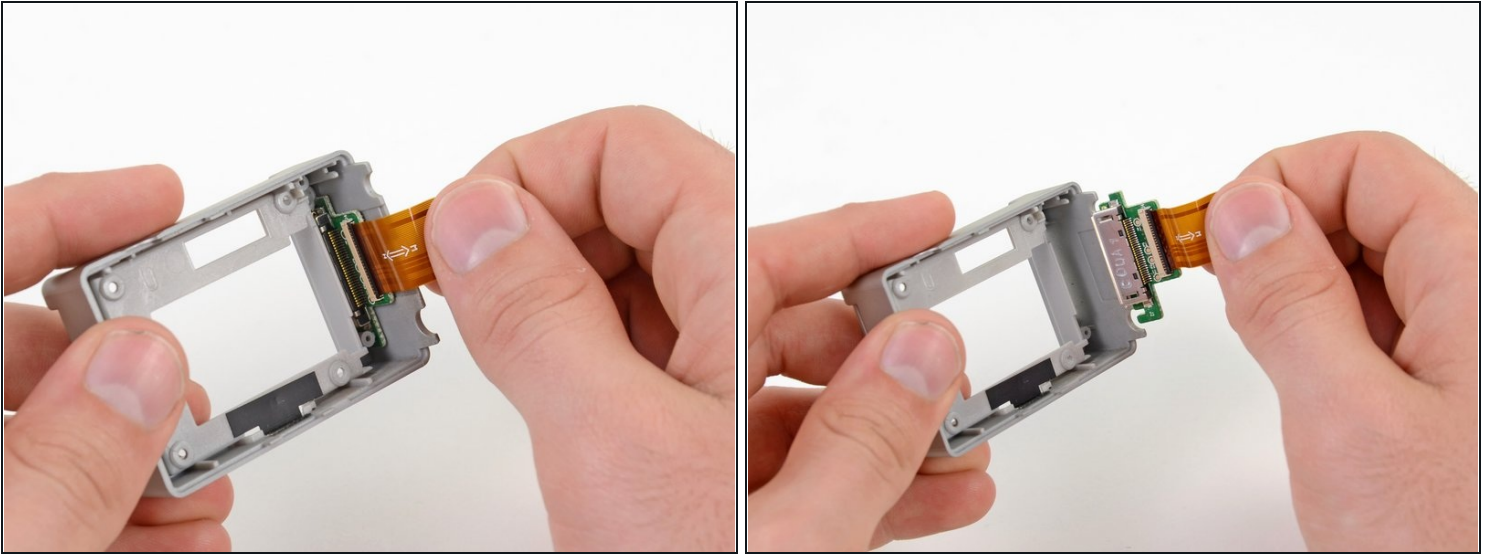
- Remove the two 5.8 mm Phillips #00 screws securing the SD board cover to the rear case.

Step 10



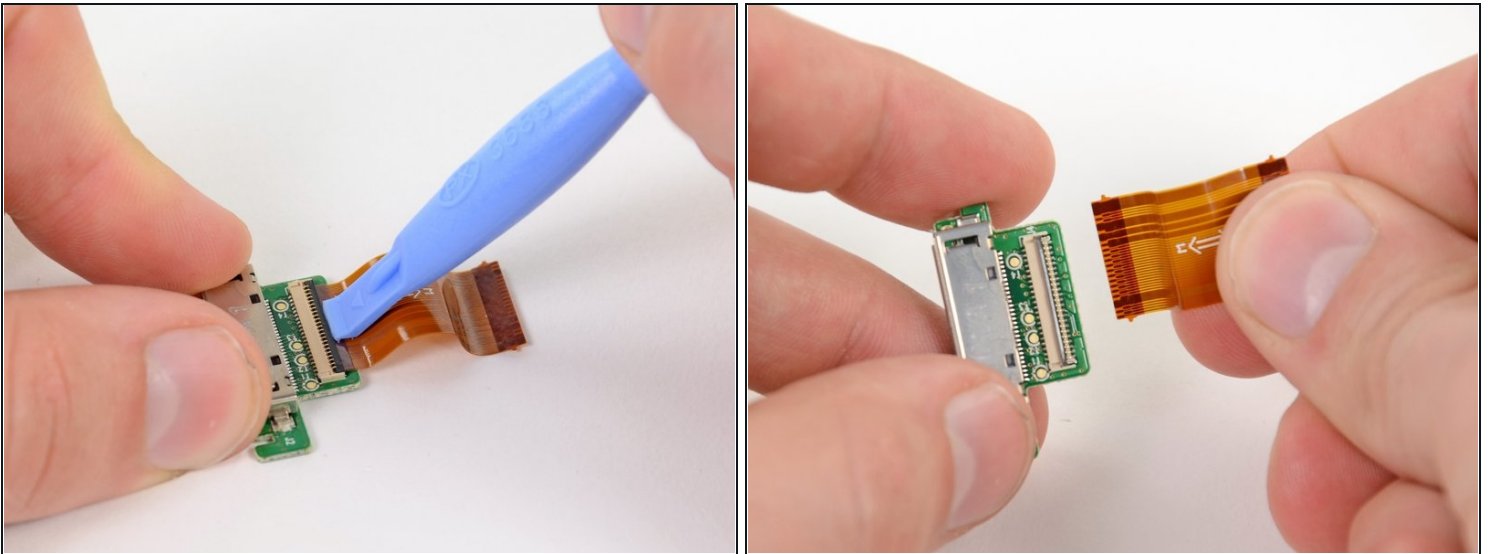
- ① Turn the rear case over so that the SD card slot is facing you.
- Use the tip of a spudger to push the bottom of the SD board cover up and out of the rear case.
- Turn the rear case back over.
- Lift the SD board cover out of the rear case with the tip of a spudger and remove it.

Step 11



- Grasp the SD board ribbon cable gently and pull the SD board out of the rear case.

Step 12 — SD Board



- Use a plastic opening tool or your fingernail to flip up the locking tab on the SD board ribbon cable ZIF connector.
⚠ Be careful that you are prying up on the locking tab and **not the connector itself.**
- Remove the SD board ribbon cable.

To reassemble your device, follow these instructions in reverse order.