



Blackberry Bold 9650 Faceplate Replacement

Use this guide if your Blackberry Bold 9650...

Written By: Ryan



INTRODUCTION

Use this guide if your Blackberry Bold 9650 faceplate is cracked, broken, or has any other form of damage that calls for a replacement. Faceplates are used to protect your phone by covering its exterior, so it is important that you replace it when it is no longer able to provide that protection. There are four prerequisite guides to follow leading up to this guide—all of which are included in these instructions.

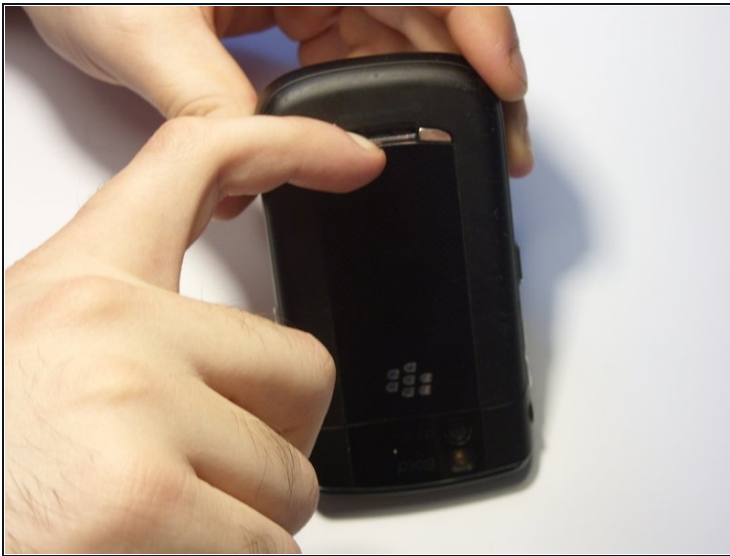
TOOLS:

[Tweezers](#) (1)
[T6 Torx Screwdriver](#) (1)
[Spudger](#) (1)

PARTS:

[Blackberry Bold 9650 Faceplate](#) (1)

Step 1 — Battery



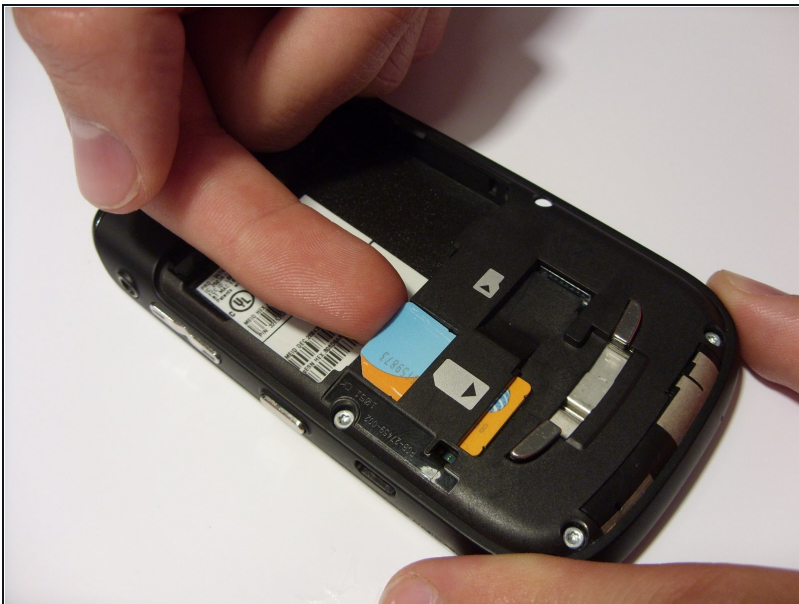
- Turn the device upside down.
- Using your finger, slide the silver cover release button towards the top of the device.
- Lift and remove the back cover.

Step 2



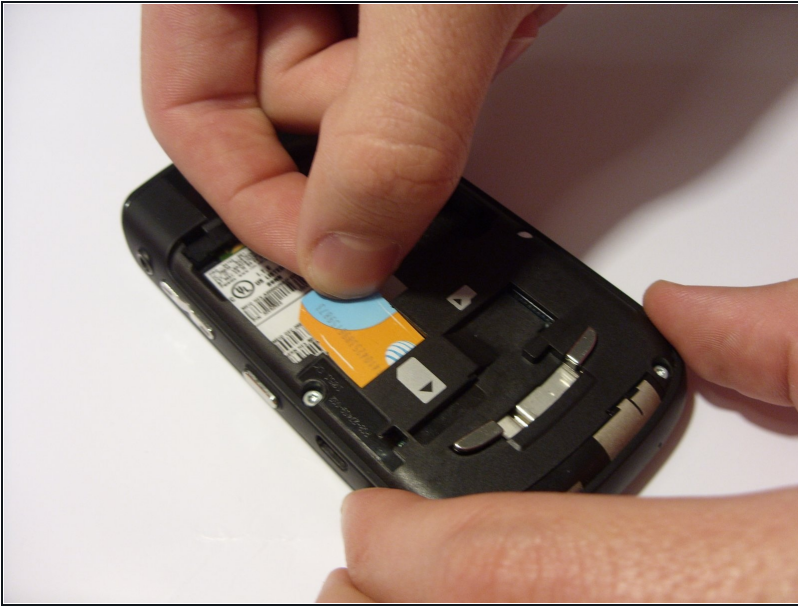
- Using your fingernails, lift the sides of the battery.
- Remove the battery.

Step 3 — SIM Card



- Orient the device so that the screen is facing the ground.
- Using your finger, gently lift the top of the SIM card.

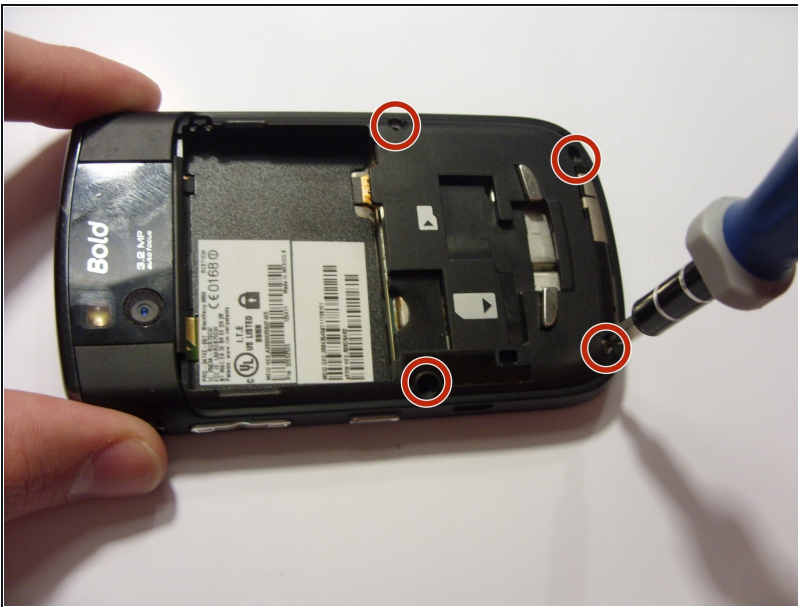
Step 4



- Gently pull out the SIM card.

⚠ The card will break in half if you apply too much force when pulling out the card.

Step 5 — Back Chassis



- Using a T6 Torx screwdriver, remove the four screws from the bottom half of the device.

Step 6



- Orient the device so that the screen is facing you.
- Using a spudger, remove the ear piece cover.

Step 7



- Using a T6 Torx screwdriver, remove the two screws from the top corners of the device.

Step 8



- Remove the back chassis by gently pulling the chassis back and forth.

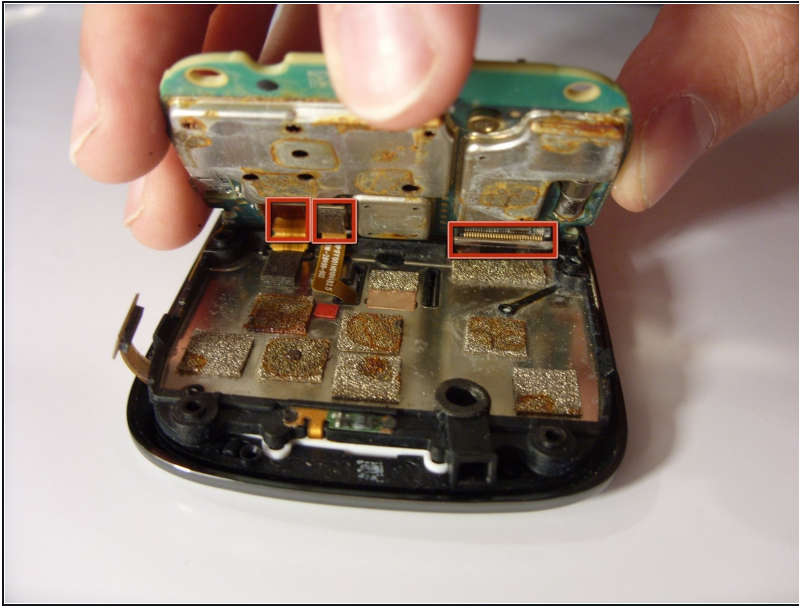
⚠ The headphone jack can break if the chassis is pulled too forcefully.

Step 9 — Mother Board



- Orient the device so that the screen is facing the ground, and the top of the phone is facing you.
- Using a pair of [tweezers](#), lift and remove the following:
 - The two round connectors on the top of the mother board.
 - ⓘ The round connectors are hooked into the mother board.
 - The flat connector in the lower corner of the mother board.

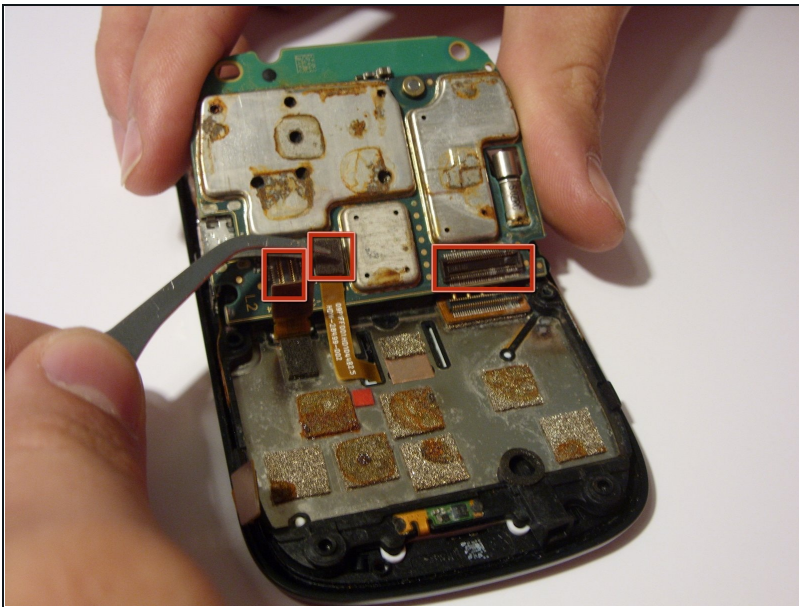
Step 10



- Using your fingers, carefully lift and remove the mother board.

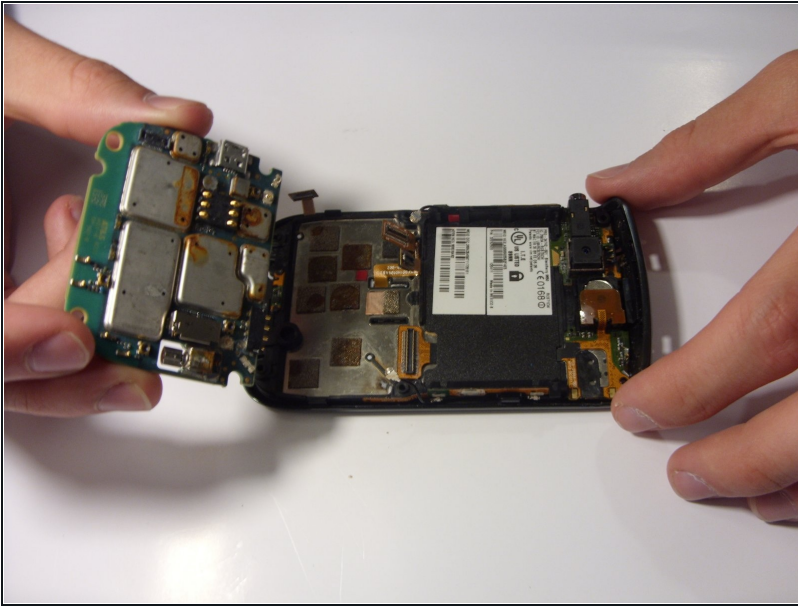
⚠ The connectors underneath the mother board are delicate and easily damaged.

Step 11



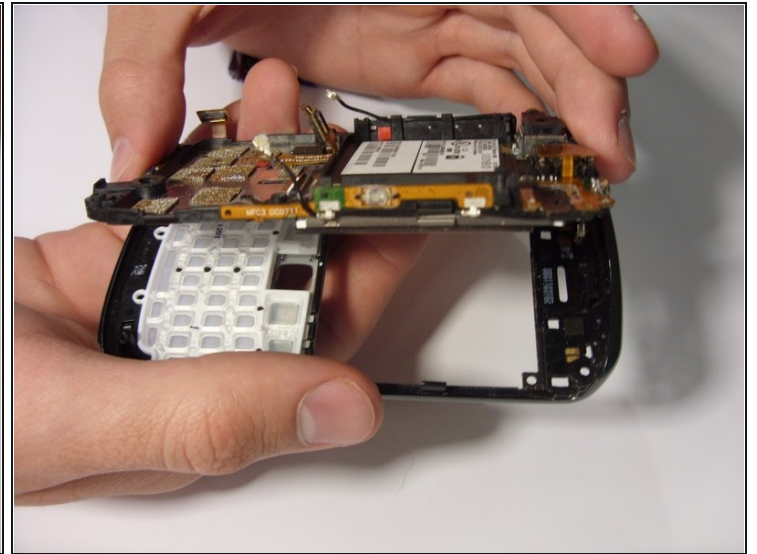
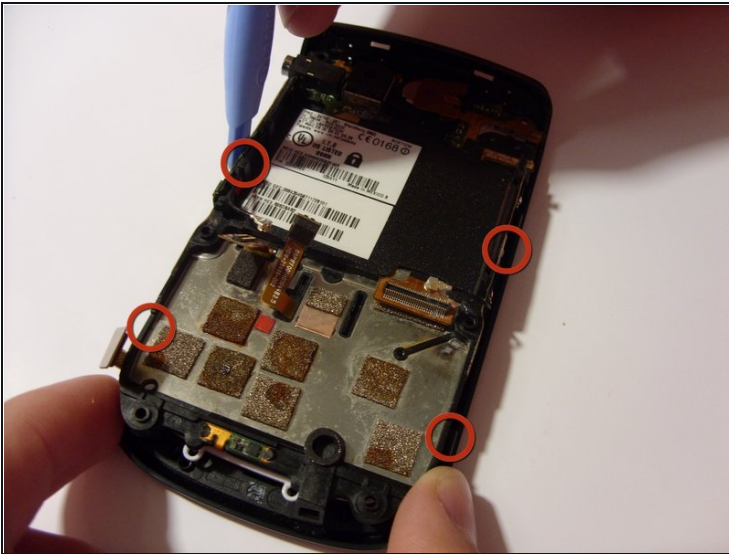
- Using a pair of tweezers, remove the three ribbon connectors.

Step 12



- Remove the mother board by lifting the board upward.

Step 13 — Faceplate



- Using a pry tool, lift up on the four tabs located on the edges of the faceplate.
- Remove the faceplate by lifting the plate upward.

To reassemble your device, follow these instructions in reverse order.