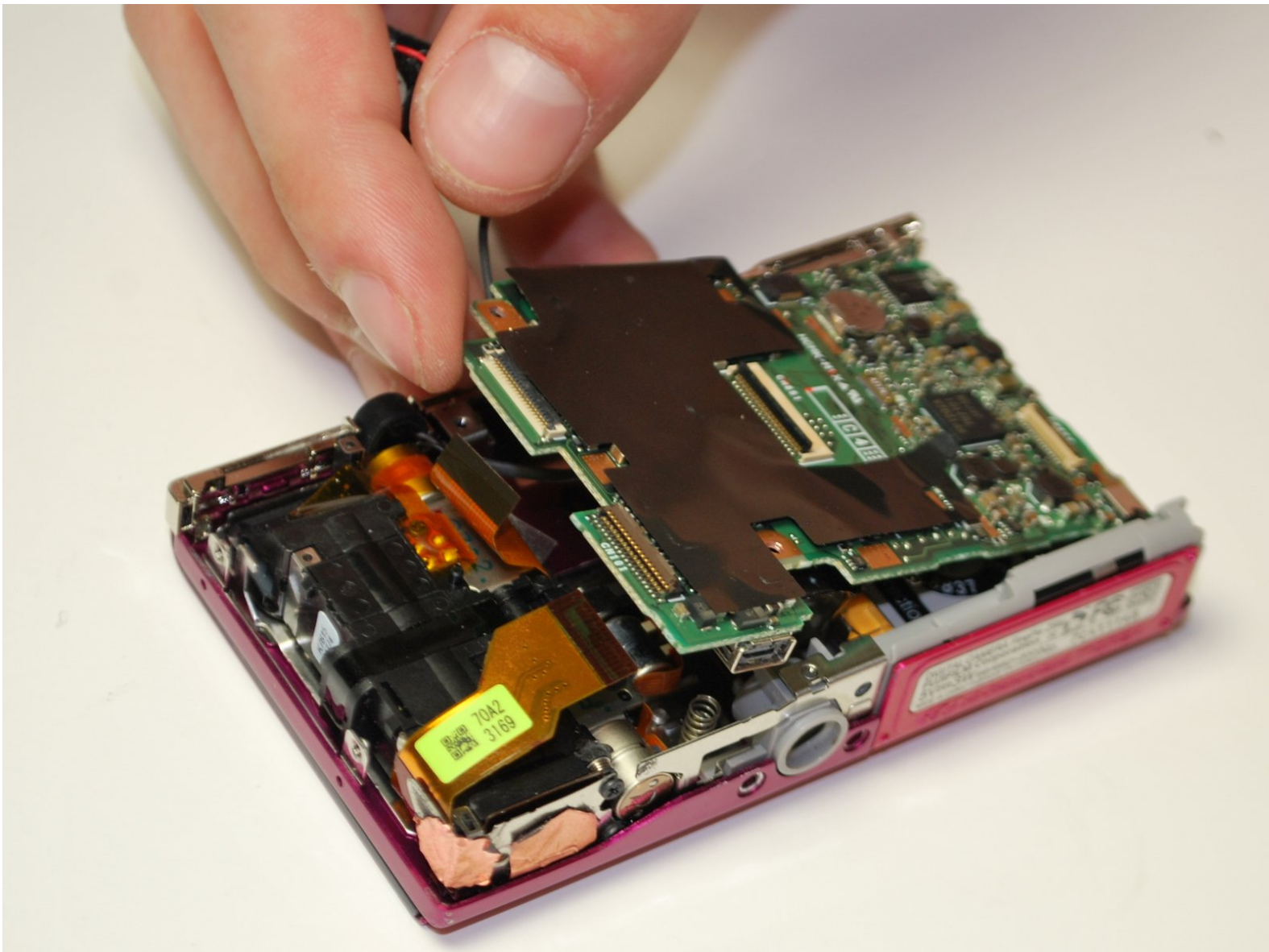




# Fujifilm FinePix Z5 Motherboard Replacement

This guide provides clear step by step instructions accompanied by photographs to help users replace the motherboard of their device.

Written By: Lauren Gibbs



# INTRODUCTION

When the camera is non-responsive, the most common issue is a faulty motherboard. This guide will take you through the step of removing the old motherboard and installing a new one.



## TOOLS:

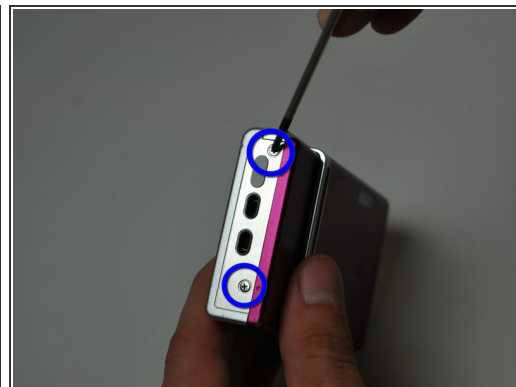
- [iFixit Opening Tools](#) (1)
- [Tri-point Y0 Screwdriver](#) (1)
- [Phillips #00 Screwdriver](#) (1)



## PARTS:

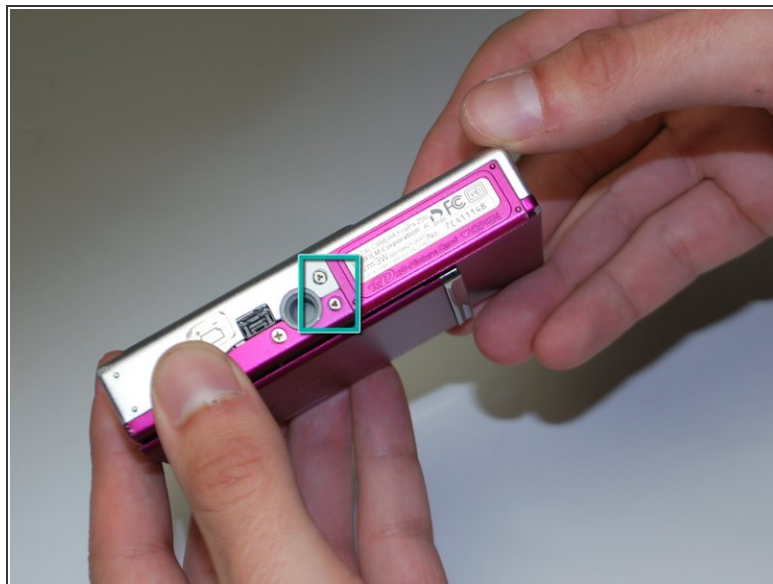
- [Motherboard \(the flash and speaker are attached\)](#) (1)

## Step 1 — Motherboard



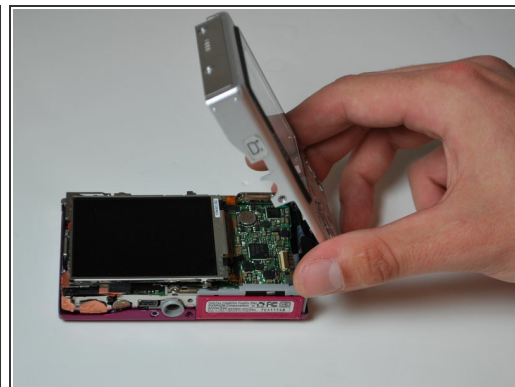
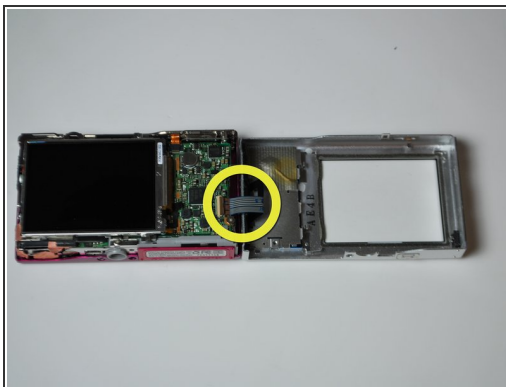
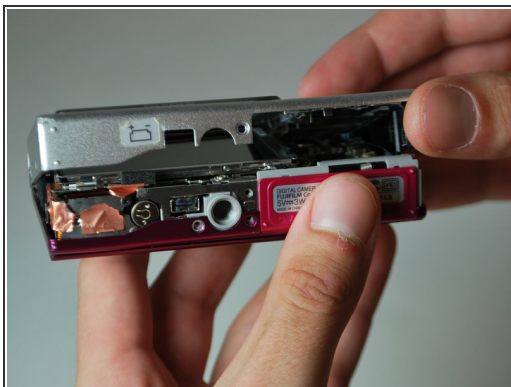
- Remove the two screws on the right side of the camera and the two screws on the left side.
- Use a small #00 Phillips flat head screwdriver.
- Keep all the screws in a container and the two different types separate.

## Step 2



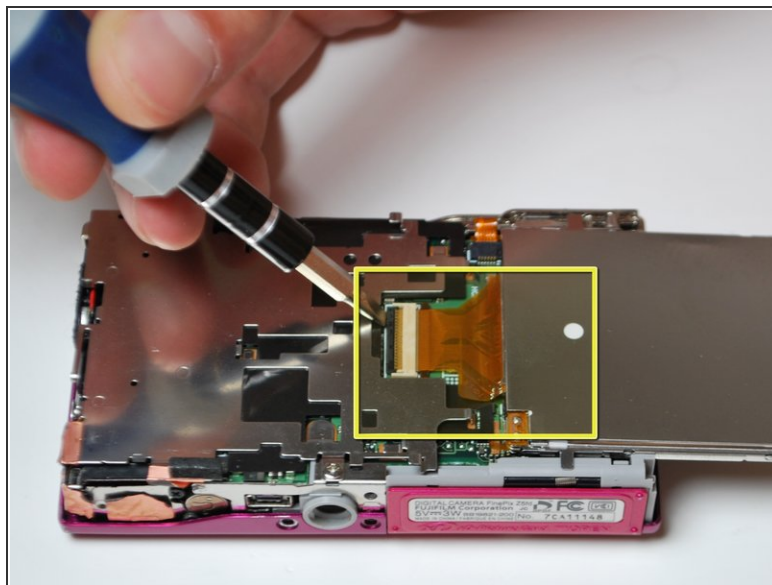
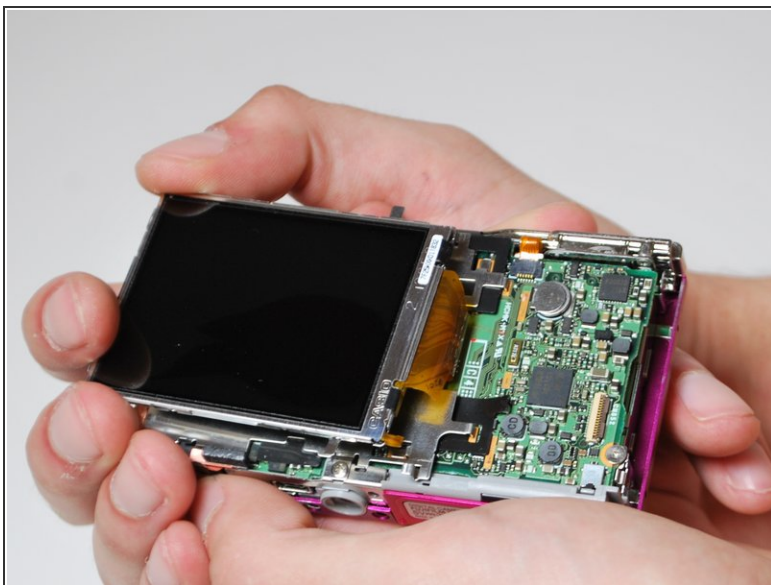
- Remove the three screws from the bottom of the camera.
- You need a three-prong screw driver for two of the three screws; keep these screws separate.

## Step 3



- Remove the back of the camera by carefully flipping it open to the right side.
- There will be a ribbon cable attaching the front panel to the motherboard, be sure not to tear this.

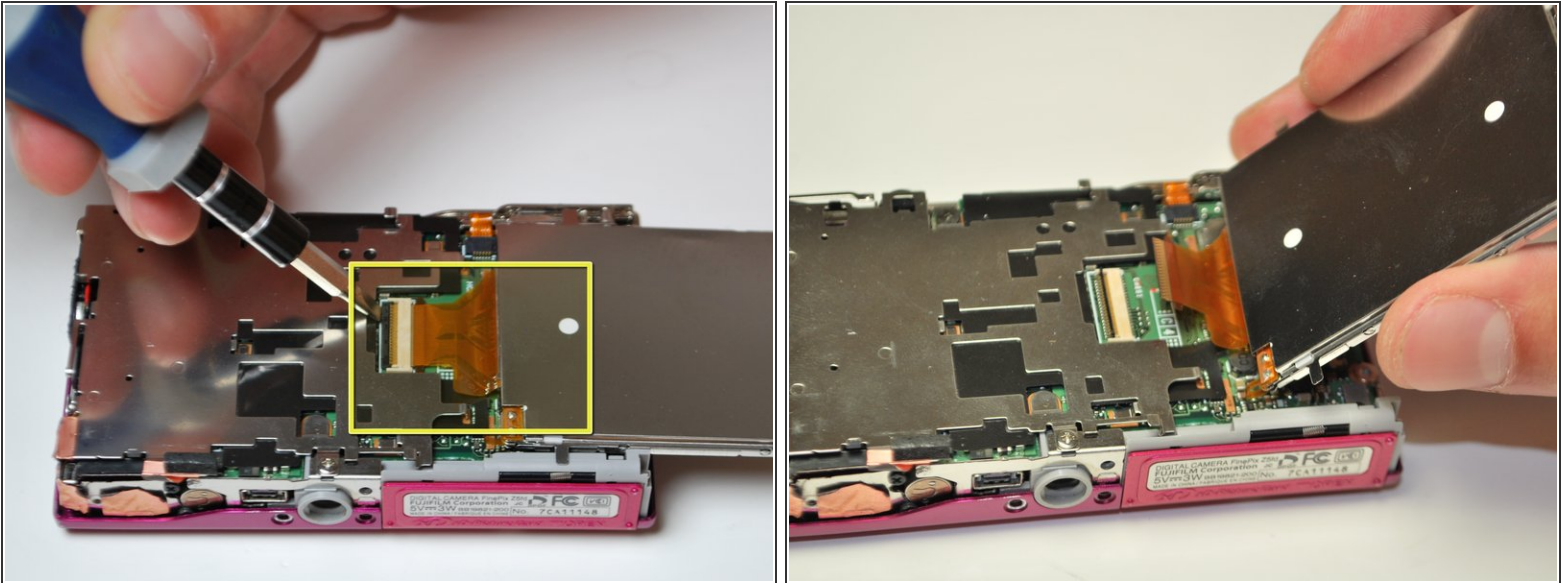
## Step 4



- Pull the LCD screen to the left slightly, then lift and flip it open to the right.
- ⚠ There is also a ribbon cable attaching the LCD screen to the motherboard, be careful not to tear it.

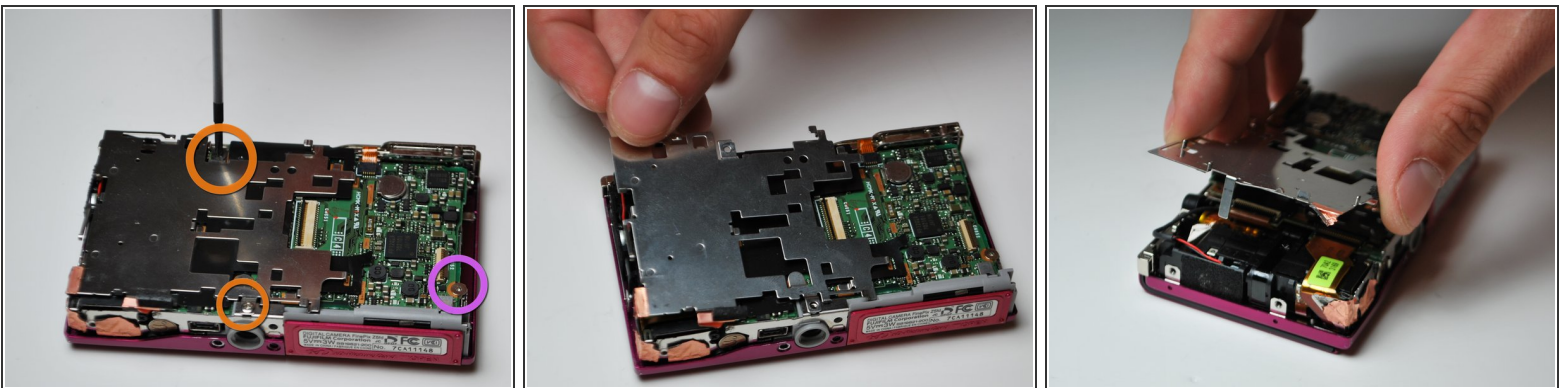


## Step 5



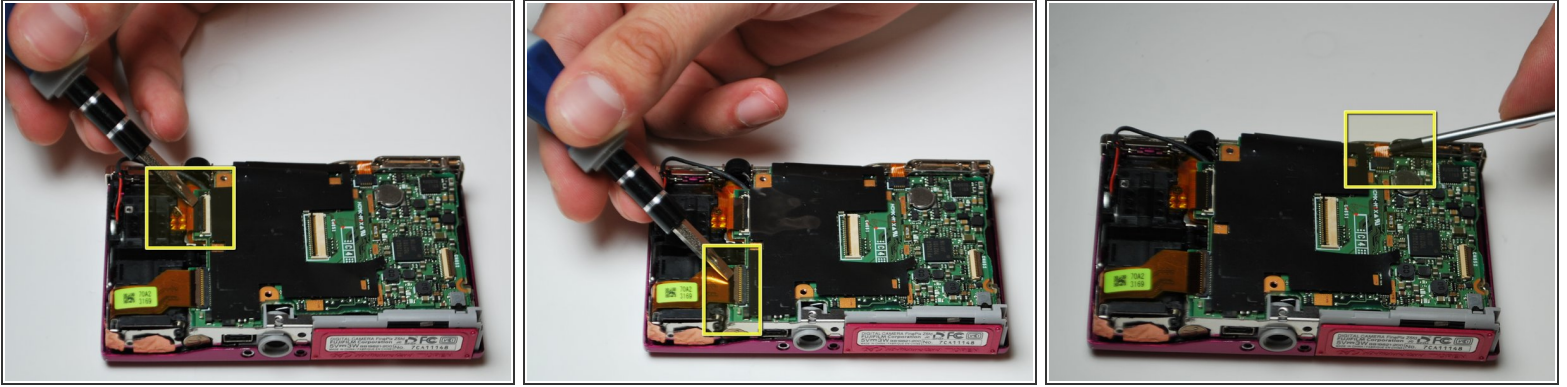
- Using a plastic opening tool, flip open the black lever to release the ribbon cable.
- Gently slide the cable out of the lock; the LCD screen is now free to be removed.

## Step 6



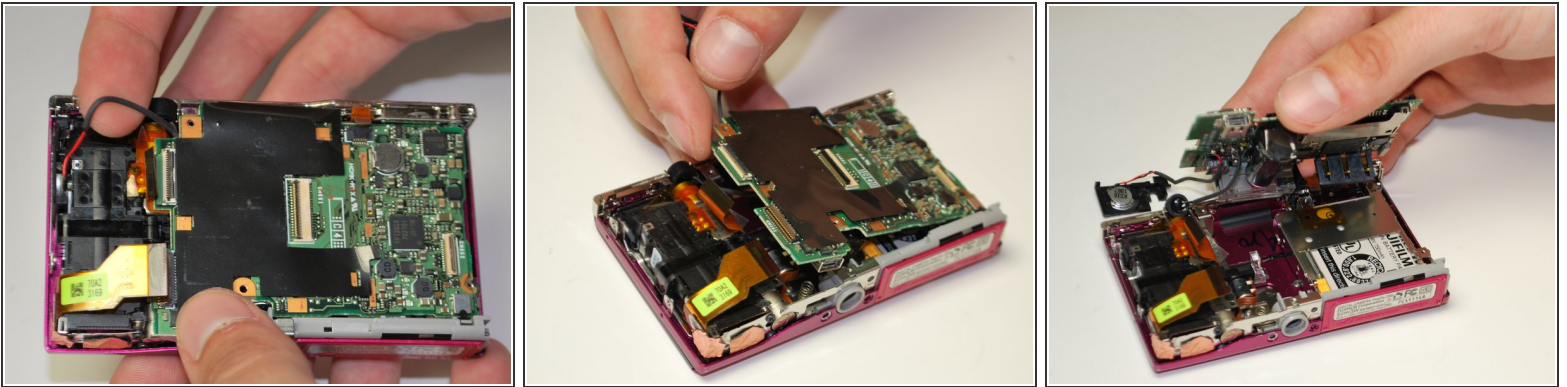
- Remove the two screws that are holding the silver paneling on.
- There is a gold ribbon cable which will tear upon removal of the silver paneling, this is normal.
- Remove the screw on the right side which is anchoring the motherboard.

## Step 7



- Detach the two ribbon cables on the left side of the camera the same way the LCD cable was detached.
- Detach the gold ribbon cable on the top middle of the camera as well.

## Step 8



- Hold wires on the left with an index finger.
- Carefully wiggle out the motherboard. The flash and the speaker will come with it.
- ⓘ Make sure you have a motherboard that includes the flash and the speaker; these items are both soldered onto the motherboard.

To reassemble your device, follow these instructions in reverse order.