



The image shows the internal components of a laptop, including the motherboard, RAM, hard drive, and cooling system. The top half of the image shows the motherboard with two large cooling fans and a green RAM module. The bottom half shows the hard drive and the bottom case with blue thermal pads. Red circles highlight three screws on the left side of the bottom case, and orange circles highlight two screws on the right side of the bottom case.

Page 1 of 6

INTRODUCTION

This guide will show you how to replace the Mid Wall on from your laptop.

TOOLS:

- [Phillips #00 Screwdriver](#) (1)
-

Step 1 — Access Door



- With the case closed, place the Unibody top-side down on a flat surface.
- Depress the grooved side of the access door release latch enough to grab the free end. Lift the release latch until it is vertical.

Step 2



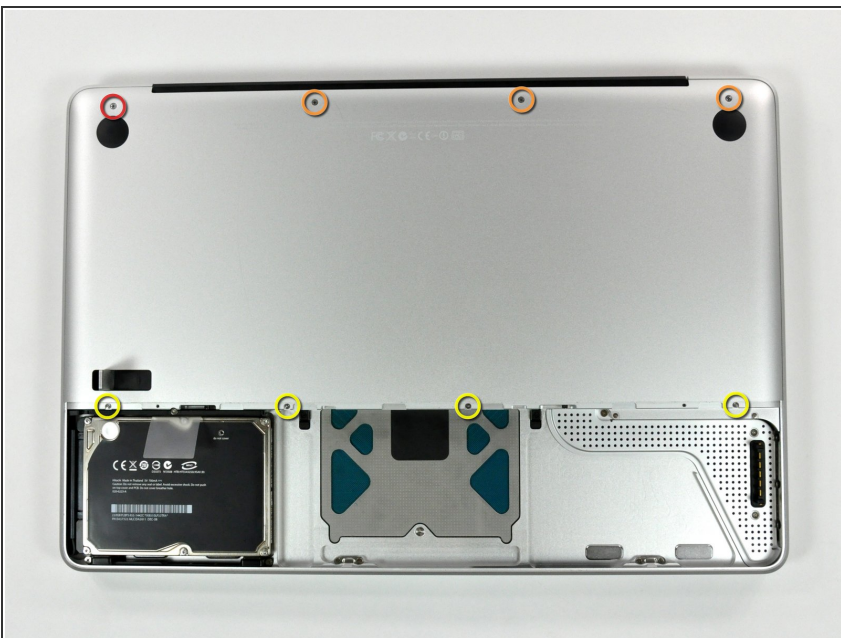
- The access door should now be raised enough to lift it up and out of the Unibody.

Step 3 — Battery



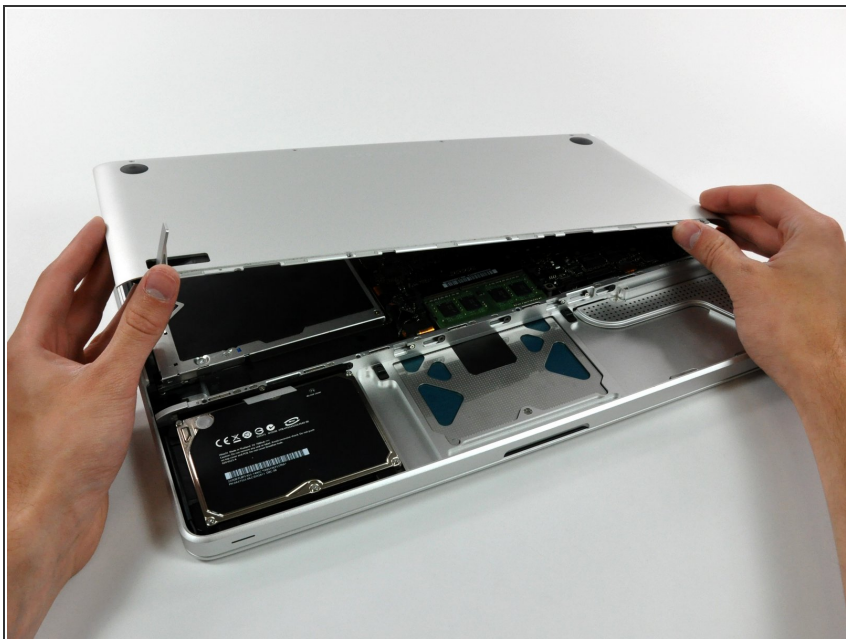
- **i** Be sure the access door release latch is vertical before proceeding.
- Grab the translucent plastic tab and pull the battery up and out of the Unibody.
- If the latch is depressed it will lock the battery in place.

Step 4 — Lower Case



- Remove the following eight screws securing the lower case to the chassis:
 - One 5.4 mm Phillips screw.
 - Three 14 mm Phillips screws.
 - Four 3.5 mm Phillips screws.

Step 5



- Using both hands, lift and remove the lower case off the upper case.

Step 6 — Mid Wall



- Remove the following 5 screws securing the mid wall to the upper case:
 - Three 10.5 mm Phillips screws.
 - Two 3.7 mm Phillips screws.

Step 7



- Lift the mid wall out of the upper case.

To reassemble your device, follow these instructions in reverse order.