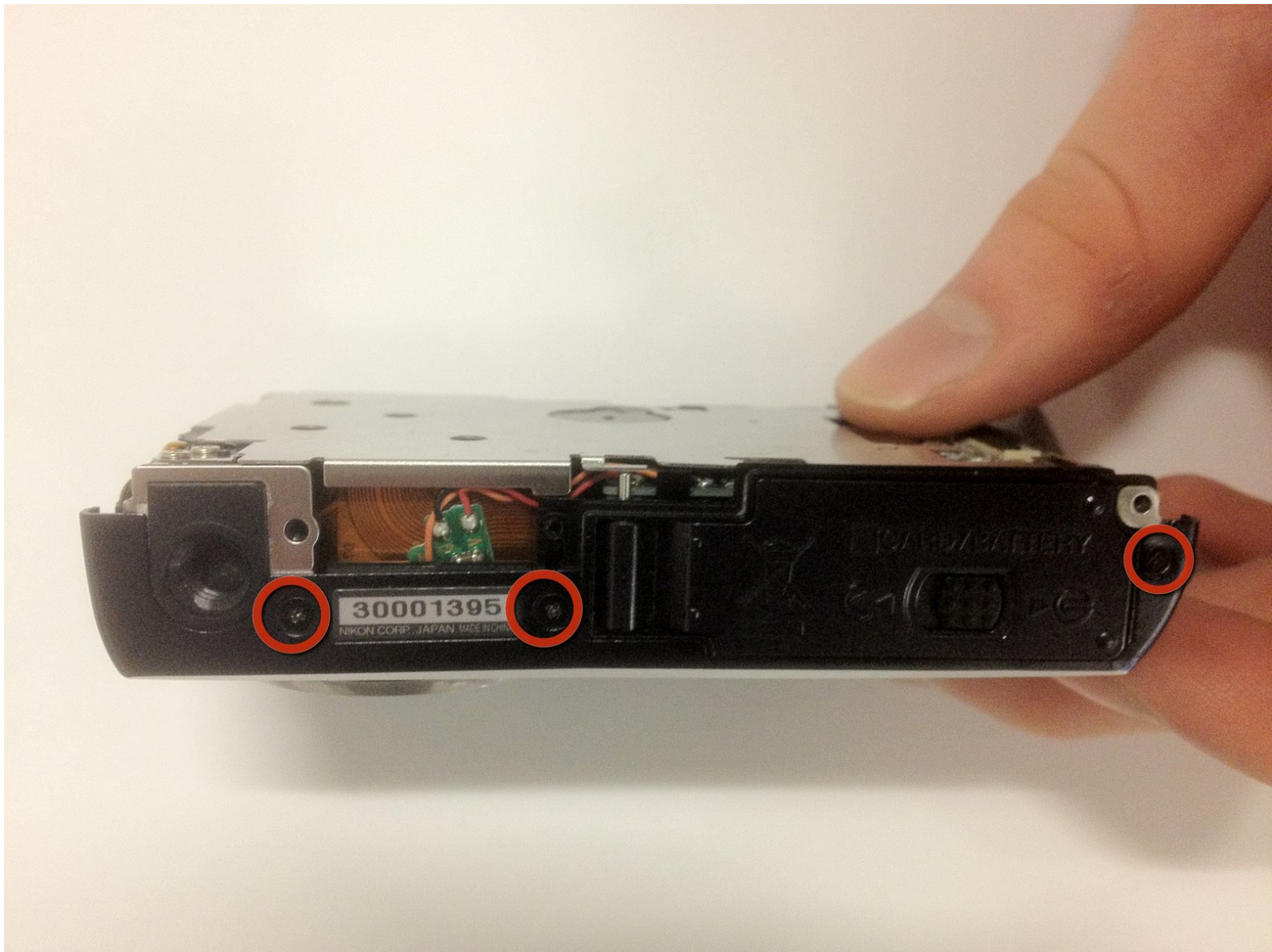




# Nikon COOLPIX S610c Front Casing Replacement

This guide will walk through the process of remove the front casing from a COOLPIX S610c camera.

Written By: Bryan Bell



---

## INTRODUCTION

If your front casing has come loose or needs to be replaced, follow this guid to remove your current front casing from the camera.

---

### TOOLS:

- [Phillips #00 Screwdriver](#) (1)
  - [Spudger](#) (1)
-

## Step 1 — Battery



- On the bottom right of the camera, locate the battery flap switch.

## Step 2



- Move this switch to the right so the battery flap can flip open.

### Step 3



- Slide the orange switch to the right as shown. Now the battery can be pulled out. Reverse these steps to re-install.

### Step 4 — Rear Casing



- Remove the three 3x3mm screws attached to the rear casing.



## Step 5



- i The panel can be identified by the wifi logo on its upper half on the camera's side.
- Remove the 5x3mm screw holding down the panel on the side closest to the lens.

## Step 6



- Pry the panel off from the bottom using your fingernail.

## Step 7



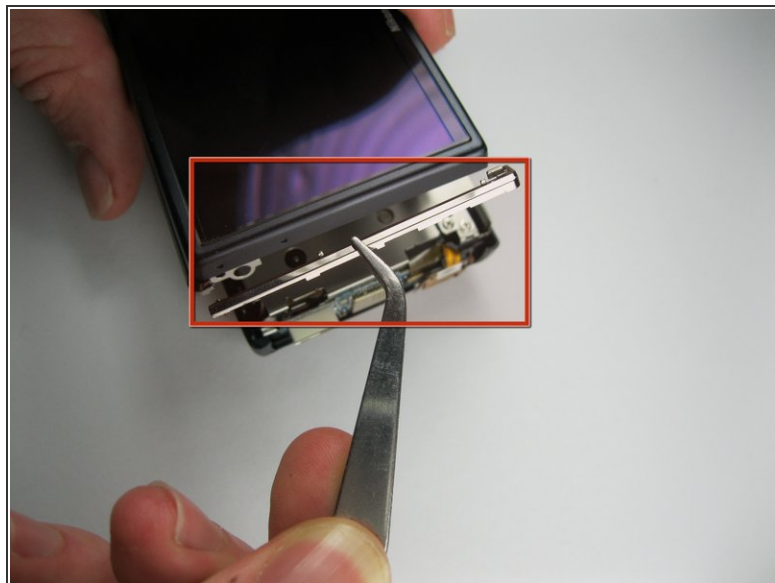
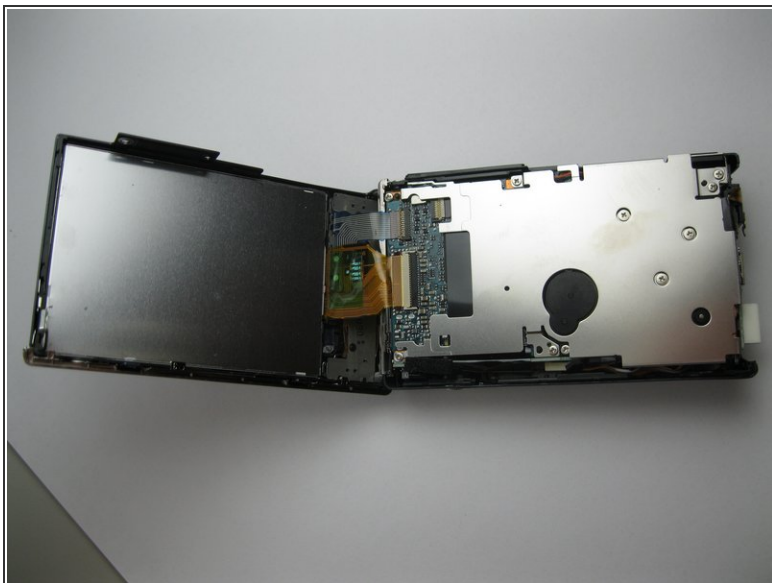
- Remove the 3x2mm screw underneath the panel near the top of the camera.

## Step 8



- Remove the 4x3mm on the opposite side near the selector wheel.
- Remove the 2x2mm and 3x2mm screws underneath the a/v flap.

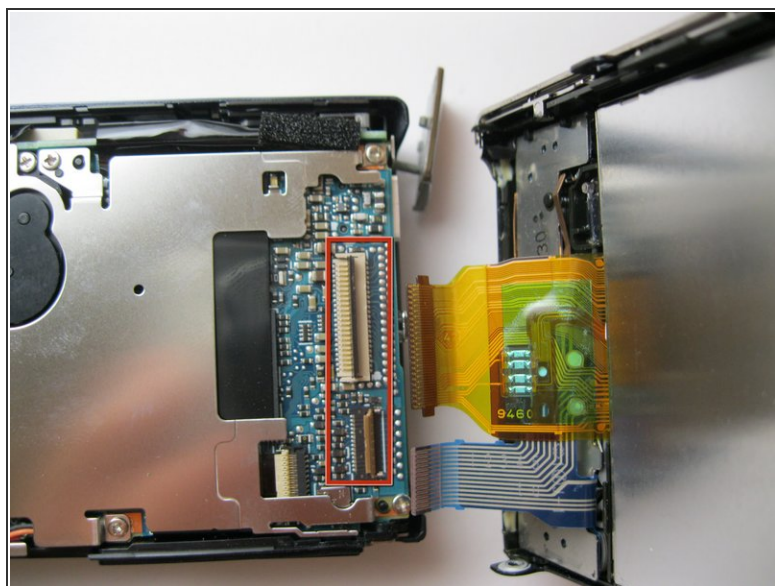
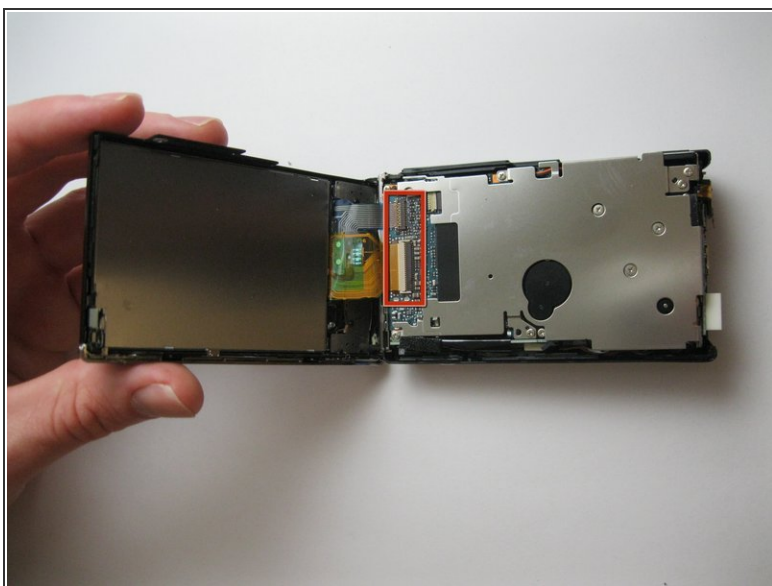
## Step 9



- Pry the back panel away from the body of the camera, using the space you just opened up.
- ⚠ Be careful not to damage the ribbon cable on the opposite end of the camera.
- A small piece of the frame of the camera may fall off, but it can be easily put back into place during reassembly.



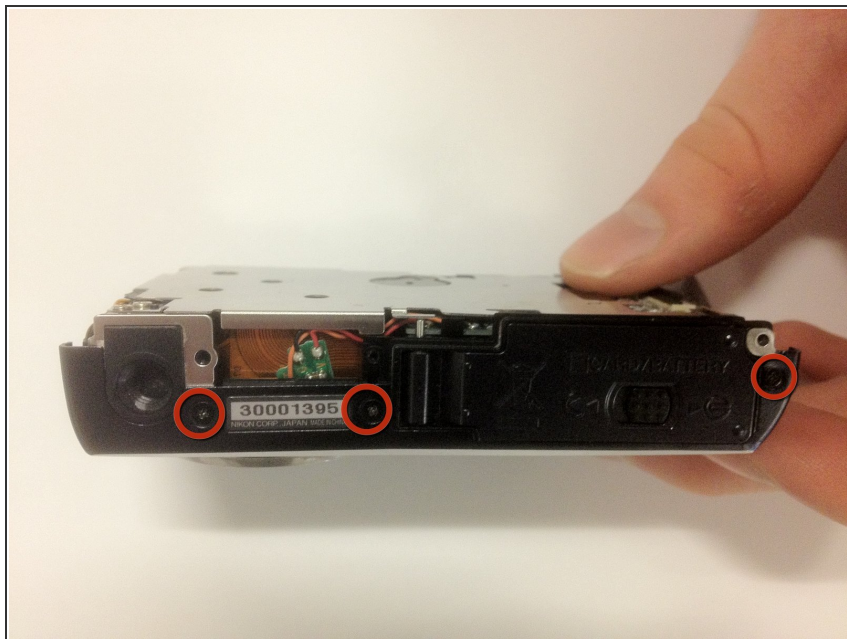
## Step 10



- Pry up the plastic ribbon connectors on the body of the camera to release the ribbon cables.
- ⓘ The center connector is detached by flipping the black latch up and away from the center of the camera.
- ⓘ The smaller connector is detached by flipping the tan latch up and away from the edge of the camera.

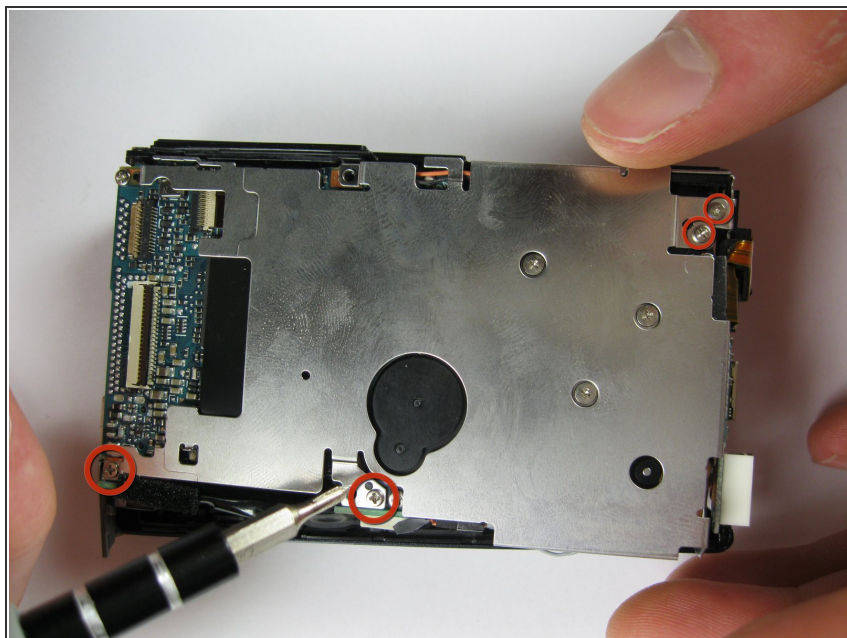


## Step 11 — Front Casing



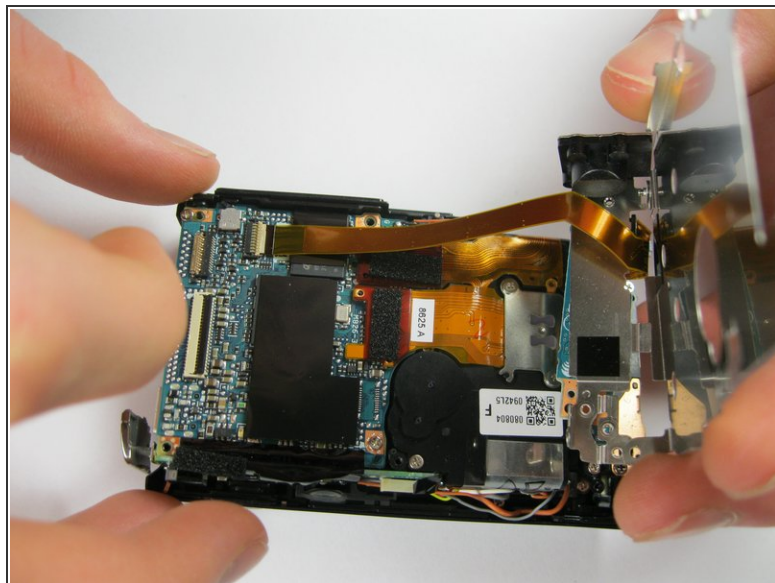
- Remove the three 3x3mm screws that attach the front casing to the bottom.

## Step 12



- Remove the two 3x2 screws and two 3.5x2.5 screws attaching the rear panel to the motherboard.

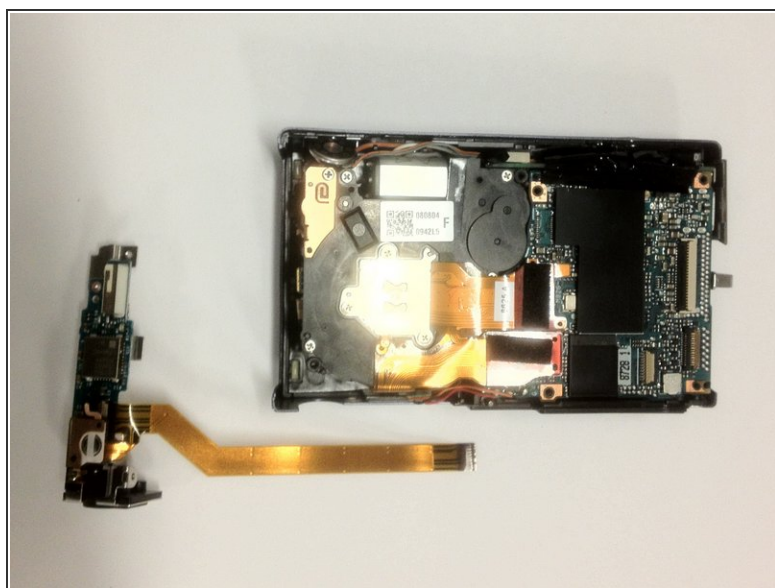
## Step 13



- Lift the back panel off the motherboard.

⚠ Be careful not to damage the ribbon cable that attaches the mother board to the rear panel.

## Step 14

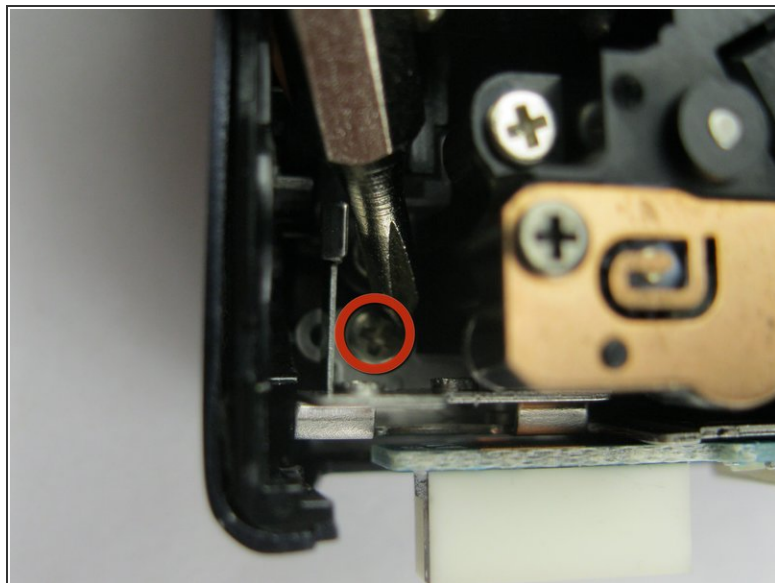


- Detach the ribbon cable from the motherboard by flipping up the latch on the ribbon connector.

**i** Note that the white ribbon connector latch flips away from the ribbon cable.



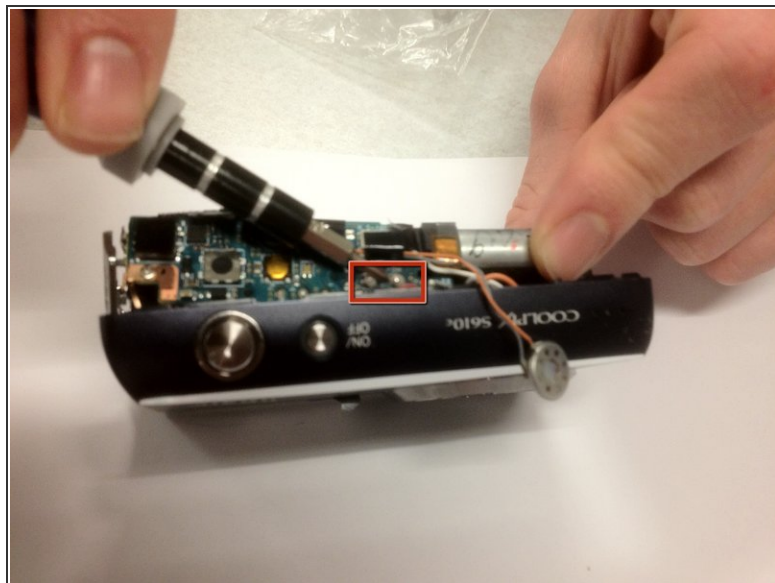
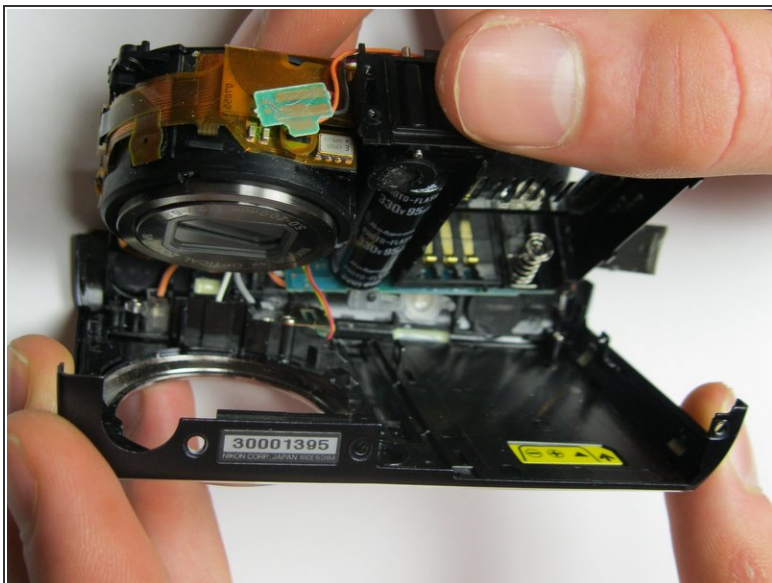
## Step 15



- Remove the final 4x3mm screw at the top of the camera near the lens.



## Step 16



- Pry the front casing away from the body of the camera.
- ⚠ Be careful not to damage the wires that attach the front panel to the motherboard.
- ⚠ Short the leads on the capacitor near the flash to avoid a nasty shock when separating the casing from the body.

## Step 17



- Unscrew the three 3x2mm screws that attach the cables to the front casing.

To reassemble your device, follow these instructions in reverse order.