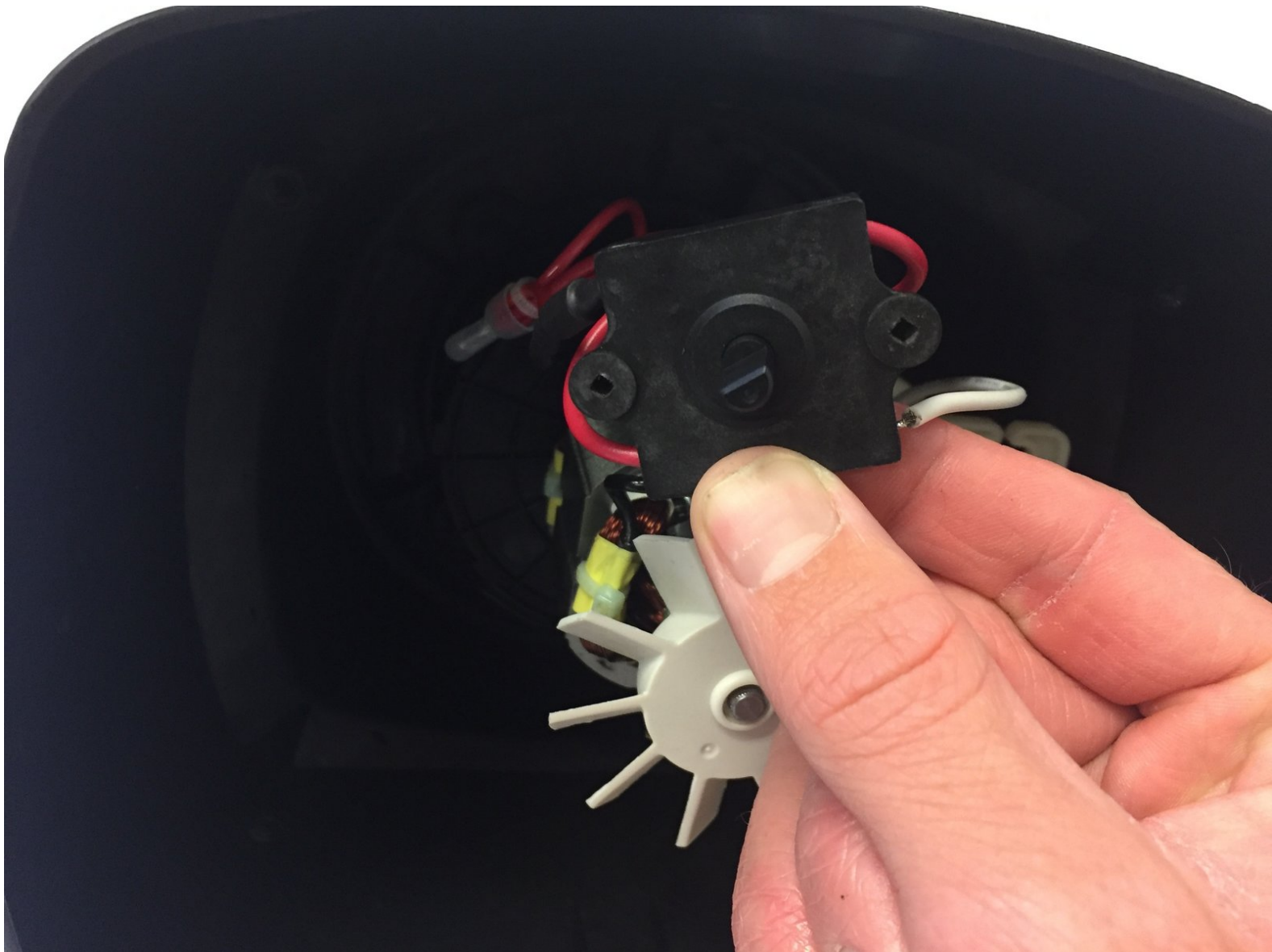




# Hamilton Beach 70740 Internal switch Replacement

Replacement of the internal switch.

Written By: Travis Williams



# INTRODUCTION

Be sure to keep the processor unplugged throughout the replacement process.



## TOOLS:

- [Phillips #2 Screwdriver](#) (1)
  - [Heavy-Duty Spudger](#) (1)
  - [Wire Stripping/Crimping Tool](#) (1)
-

## Step 1 — Bowl and Lid



- Turn the bowl counterclockwise and lift.

## Step 2 — Power Knob



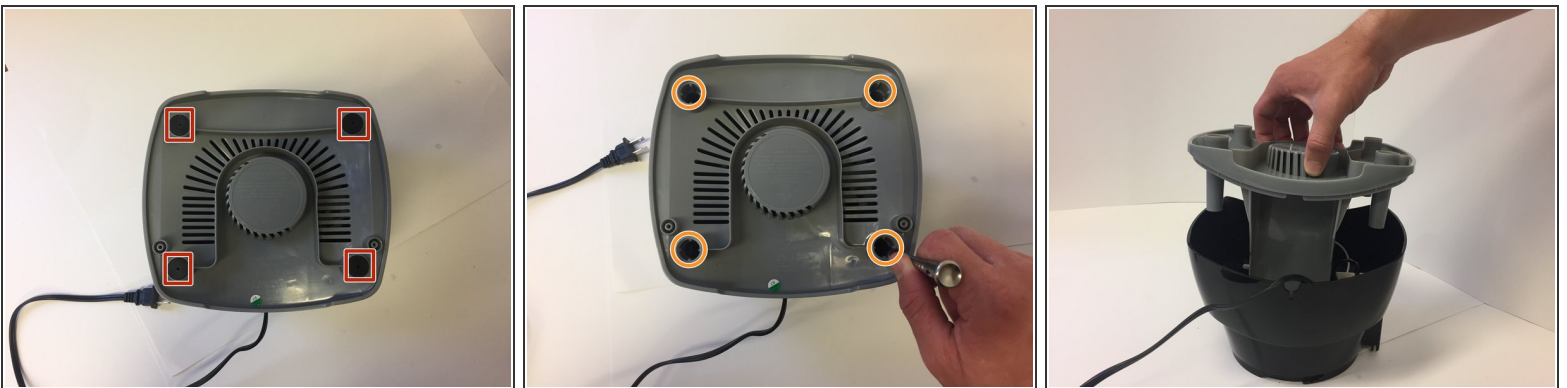
- Using the heavy duty spudger pry the plastic knob off the front of the processor.

### Step 3 — Base



- Using a #2 Phillips head screwdriver, remove the two 11 mm screws from the base.
- Pull suction cups straight out.

### Step 4



- Remove rubber caps using the heavy duty spudger.
- Remove the four 11 mm screws using the #2 Phillips head screwdriver.
- Pull base straight out.

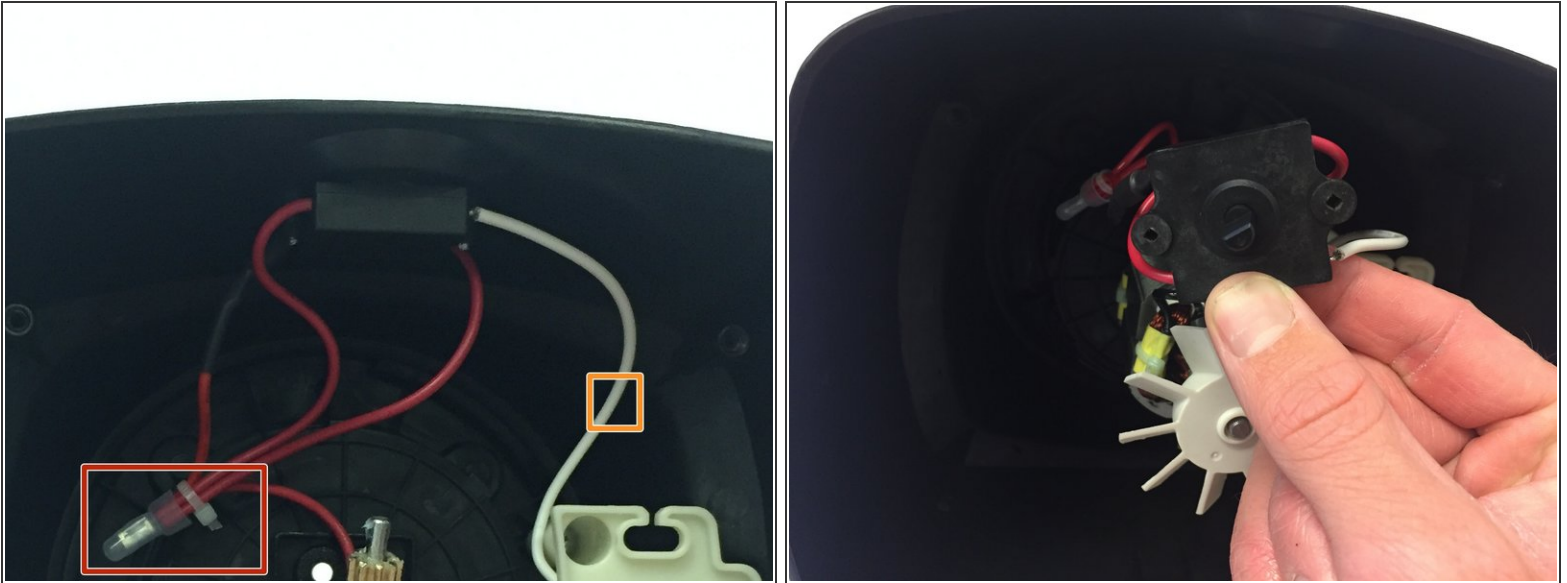


## Step 5 — Internal switch



- Remove the two 11 mm screws using the #2 Phillips head screwdriver.

## Step 6



- Cut all four red wires using the wire stripper crimping tool.
- Using the wire stripper crimping tool strip the ends of each red wire and insert them into a new wiring connector cap, then crimp firmly.
- Cut the white wire using the stripper crimping tool.
- Using the wire stripper crimping tool strip the ends of each of the white wires and insert them into the opposite ends of a parallel connector, then crimp firmly.

To reassemble your device, follow these instructions in reverse order.