



Huawei P9 Display Replacement

Use this guide to replace the display of your...

Written By: Dominik Schnabelrauch



INTRODUCTION

Use this guide to replace the display of your Huawei P9.

Before disassembling your phone, discharge the battery below 25%. The battery can catch fire and/or explode if accidentally punctured, but the chances of that happening are much lower if discharged.



TOOLS:

[SIM Card Eject Tool](#) (1)
[Spudger](#) (1)
[Tweezers](#) (1)
[Phillips #00 Screwdriver](#) (1)
[iSlack](#) (1)
[P2 Pentalobe Screwdriver iPhone](#) (1)
[iFixit Opening Picks \(Set of 6\)](#) (1)
[Plastic Cards](#) (1)



PARTS:

[Huawei P9 LCD and Digitizer](#) (1)
[Huawei P9 Display Adhesive](#) (1)

Step 1 — Back Cover



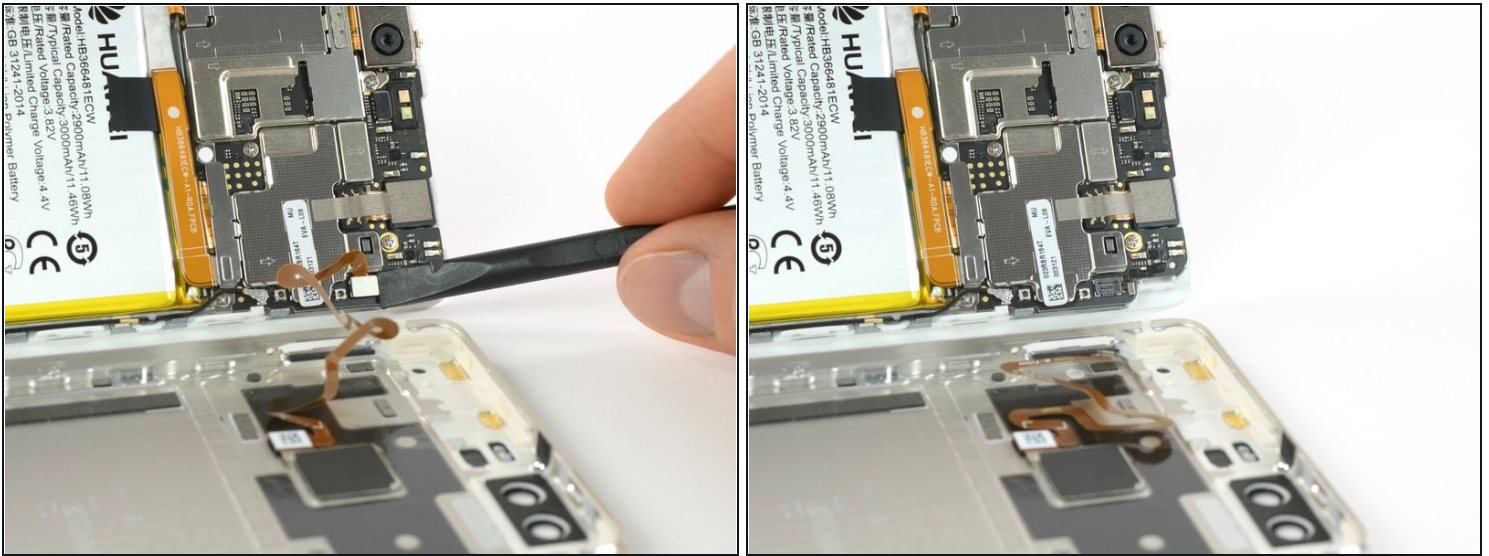
- First switch off your phone and remove the SIM card tray.
- Unscrew the two Pentalobe P2 screws located at the bottom next to the device's USB C port.
- ⓘ If the screen is cracked you might want to use some tape to protect your eyes from glass shreds and get a better grip to open the phone.

Step 2



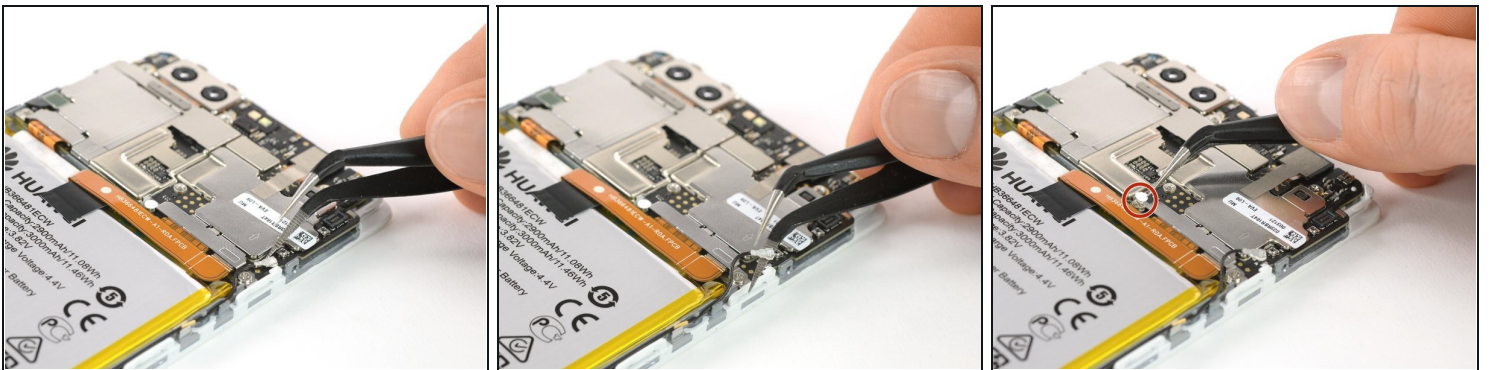
- ⚠️ Avoid to lift only the display instead of the whole phone assembly as doing so may cause damage to the screen.
- Use an iSlack or a suction handle to separate the phone assembly from the rear panel.
 - ① In case you can't manage to lift the phone assembly out of the rear panel you can insert the pointed end of a spudger in the headphone jack opening and press the phone assembly upwards until you create a gap between assembly and rear panel. Then use the spudger to lever the phone assembly out of the panel.
- ⚠️ Don't remove the rear panel completely yet. There is a cable connected to it! It is running from the finger print sensor to the display unit.

Step 3 — Fingerprint sensor



- Disconnect the fingerprint sensor using a spudger.

Step 4 — Battery



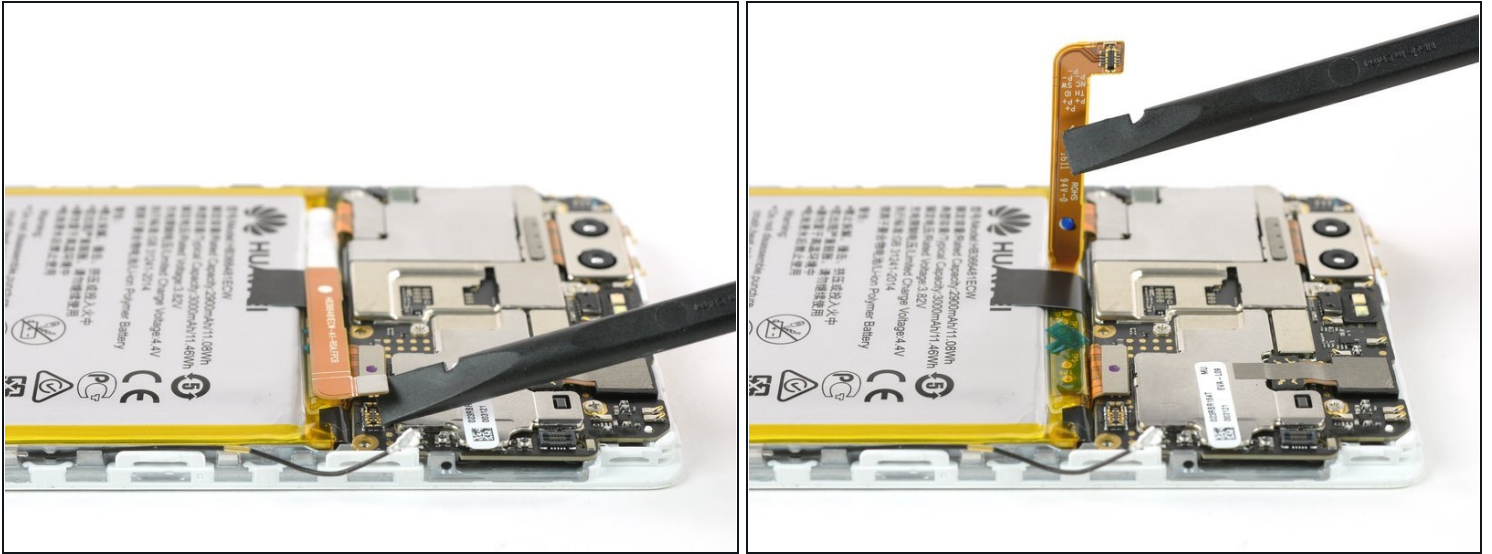
- Unplug the antenna cable.
- Remove the sticker that sits on top of the screw.

Step 5



- Unscrew the two Phillips #00 screws that hold the metal plate in place.
- The plate, which is covering the battery connector, has two little hooks on each side. Use a tweezer to free them and unhinge the plate by carefully moving it upwards.

Step 6



- Now you can unplug the battery connector and bend it aside.
- The EVA-L09 model has an NFC antenna adhered onto the battery.
 - ① If you are just removing the battery to get to the display, you can leave the NFC on the battery.
- ⚠ Mark its place on the battery with a felt pen for reassembly. Carefully peel it off and make sure not to rip or crease the antenna.
- ☑ For reassembly, place the NFC antenna on the battery where it was before so its contacts align with their counterparts.

Step 7



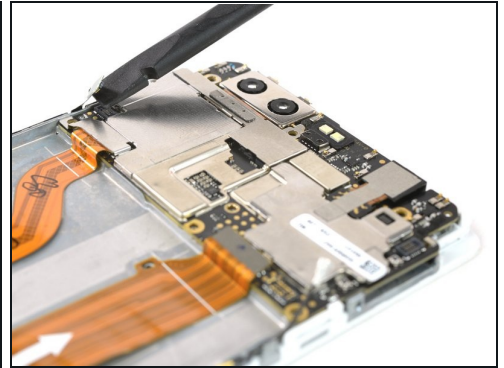
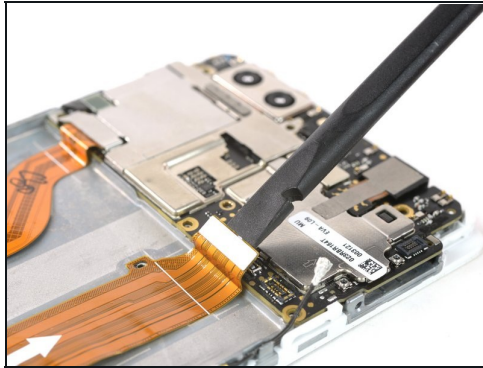
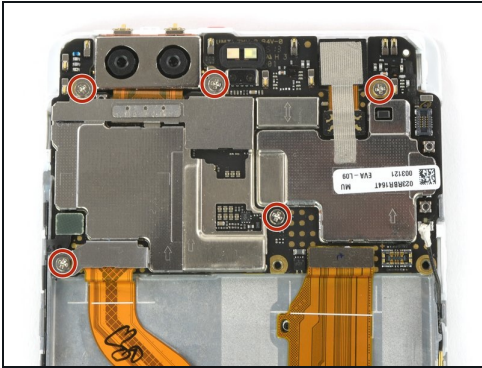
- Free the ends of the adhesive pull tabs to get a good grip on them.

Step 8



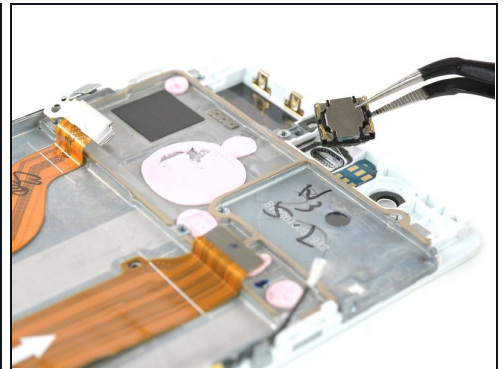
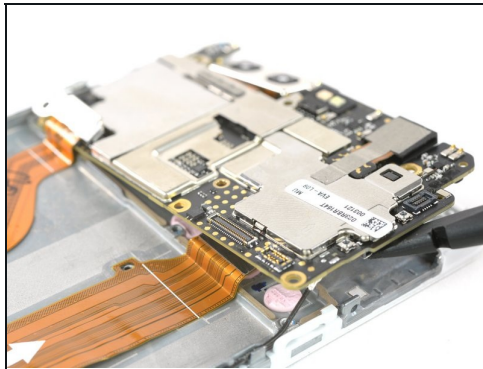
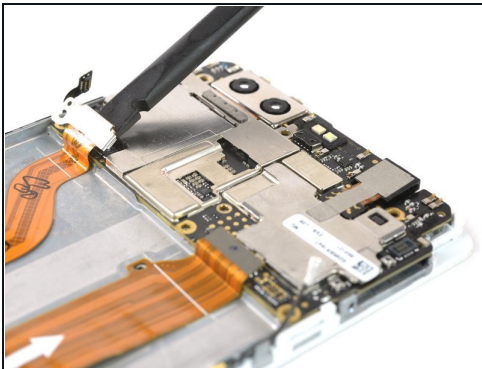
- The battery is secured with three pieces of adhesive, a removable pull-tab in the center, and on the SIM tray side. A third piece of adhesive on the button side has no pull-tab.
- Pull the adhesive tabs in a slow constant movement to free the battery.
 - ⓘ Should those adhesive tabs snap, you might want to use an iOpener to heat and soften them a little bit so you can pry out the battery with a spudger.
- ⚠ There are two cables running directly underneath the battery. Take care not to damage them when prying with a spudger! You can see their position in the last picture.
- Slowly lift the battery toward the button side and free it from the remaining hidden piece of adhesive.
- ★ When reassembling your phone, replace old adhesive with [stretch release adhesive strips](#), [double-sided tape](#), or [pre-cut adhesive strips](#).

Step 9 — Display



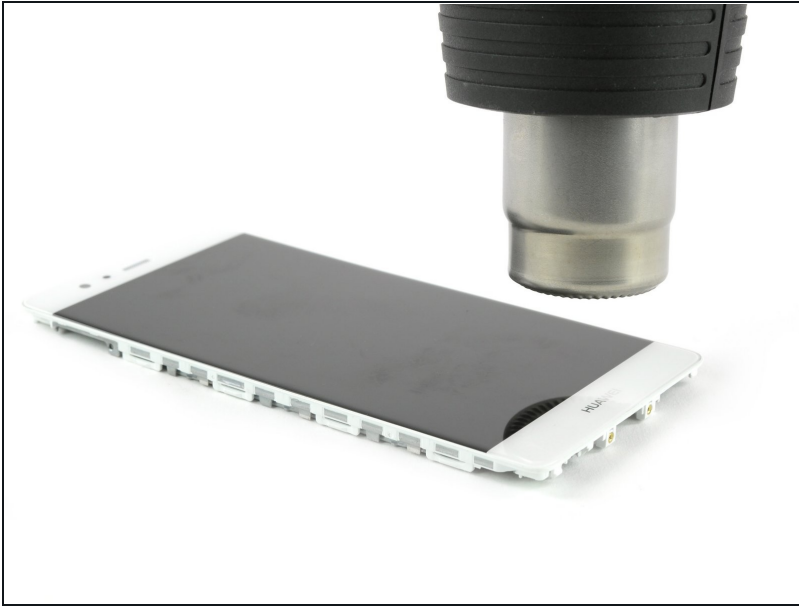
- Remove the other five Phillips #00 screws from the motherboard.
- Disconnect the motherboard flex cable as well as the power and volume button cable.

Step 10



- Unplug the LCD screen flex cable.
- Now you can remove the complete motherboard easily.
 - ⓘ Conveniently both, the front and rear camera, are removed with the motherboard.
- Remove the earpiece speaker (mind adhesive underneath).

Step 11



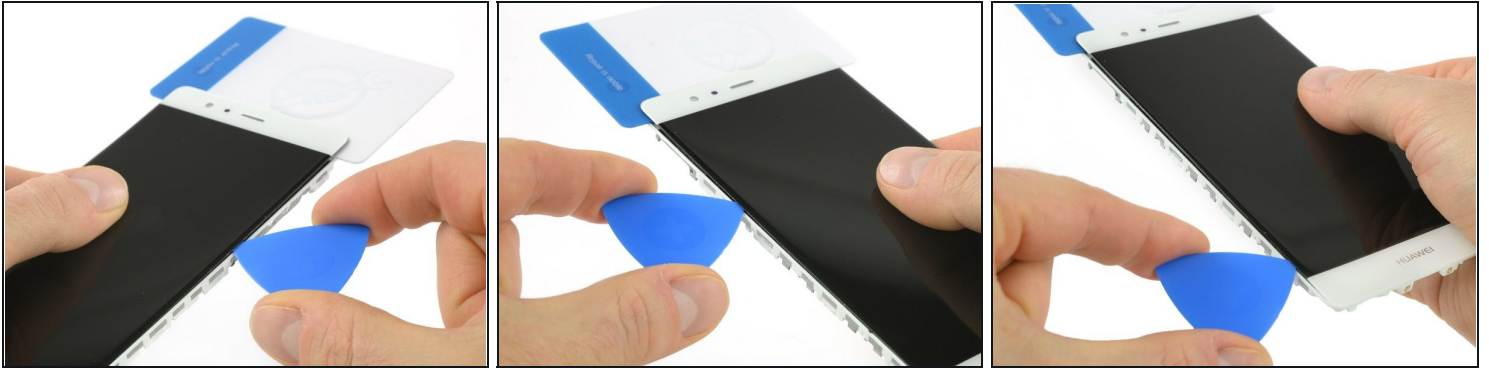
- Heat the top part of the glass with a heat gun or iOpener.
- ① The glue used for the display is tough and needs patience and gentle steady force.

Step 12



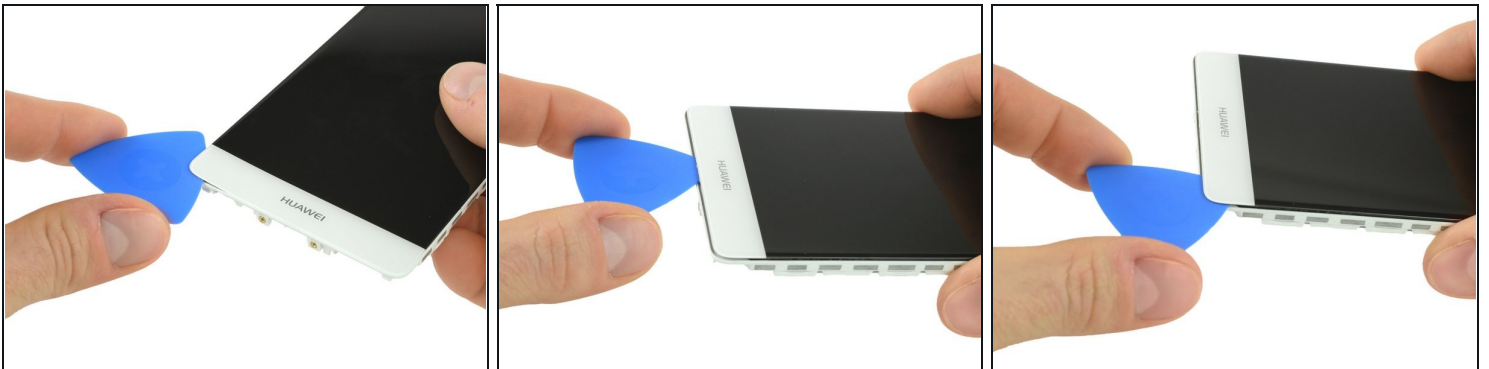
- When the glue is softened, insert a spudger through the camera bay in the midframe and push the display away from the frame.
- Place a [plastic card](#) or two opening picks under the display bezel at the top, between the screen and the frame. This will prevent the glue from readhering.

Step 13



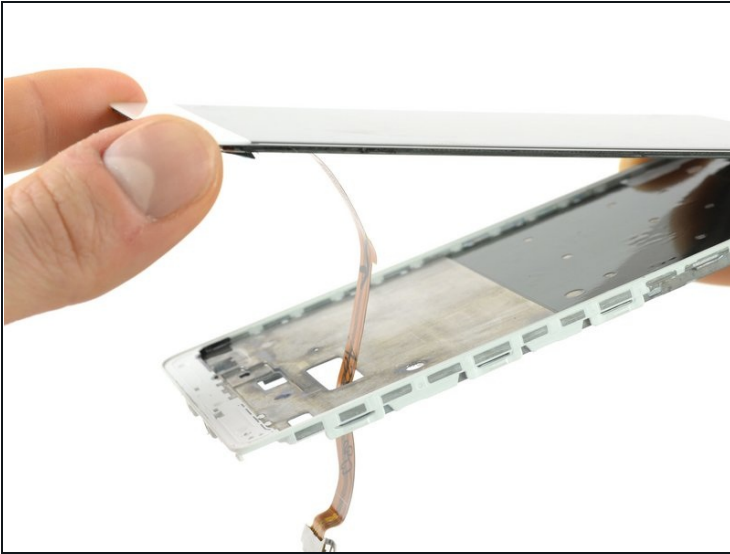
- Insert an opening pick approximately 1/16 of an inch and slide it along the side to separate the display from the frame.
- You might feel more resistance where the LCD ends on the lower end.
- Stop here and take your time to reheat that part and soften the glue.

Step 14



- When the glue is soft enough carefully move the pick around the bottom corner.
- You can now work your way along the bottom edge.
- Leave the opening pick on one side and flip the display over.

Step 15



- On the back side detach the display flex cable from the frame.
- Now you can lift the display away from the frame.
- Check for any small parts like the rubber gasket at the top behind the speaker grill.

To reassemble your device, follow these instructions in reverse order.