



# Lumen Projector Bulb Replacement

This guide will provide a step-by-step procedure to replace a projector light bulb and clean the surrounding area.

Written By: Desiree Benitez



---

## INTRODUCTION

This guide will provide a step-by-step process on how to safely remove and replace a light bulb for a Ben-Q projector. In the process of this removal, it will be demonstrated how to clean the area of any dust and how to recycle the waste material- old light bulb.

---

### TOOLS:

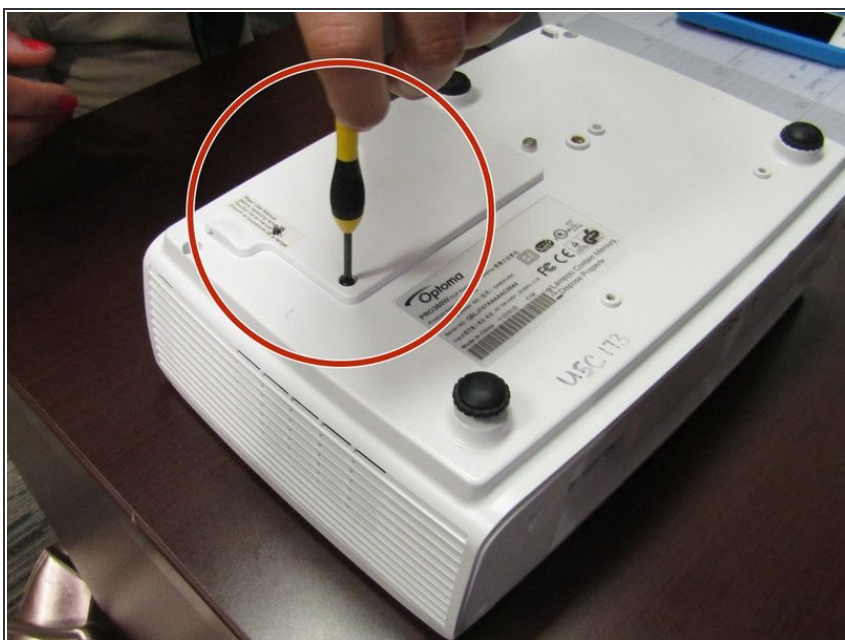
- [Phillips #0 Screwdriver](#) (1)
-

## Step 1 — Unplug projector



- Unplug the projector from the wall outlet to allow for the light bulb to cool for at least 30 minutes.

## Step 2



- On the bottom side of the projector, locate and unscrew the back cover using a Philip's head screwdriver.



### Step 3



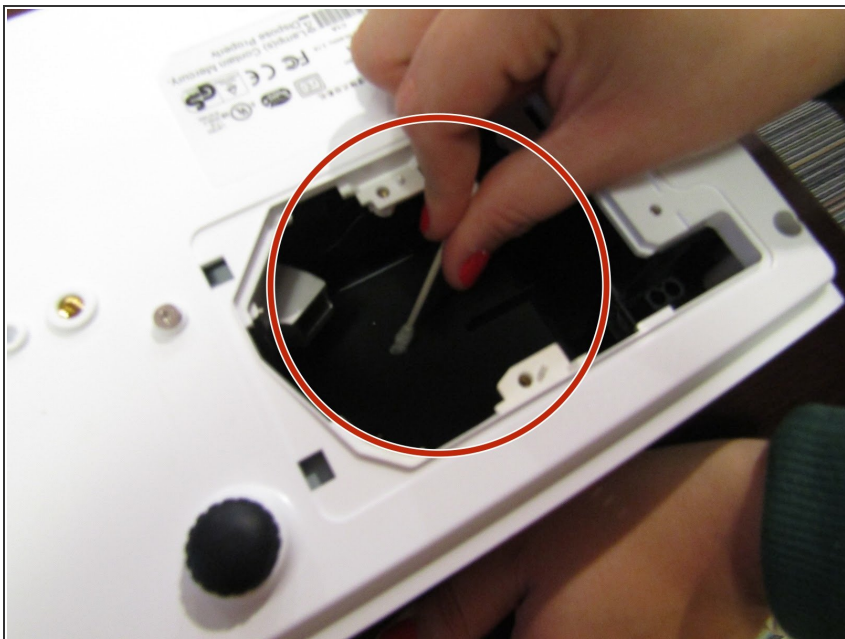
- Unscrew the bulb screws on either side of the silver plate.

### Step 4



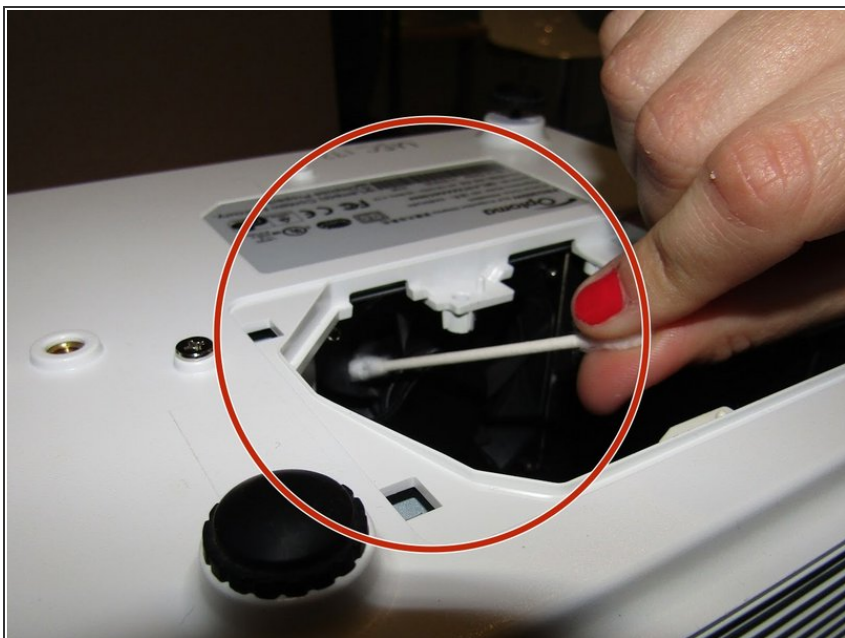
- Remove the light bulb from the projector by lifting the silver handle and pulling up.

## Step 5



- Clean the now vacant area where the light bulb once belonged of dust and particles using a Q-tip.

## Step 6



- Use a new Q-tip to clean the fan blades and hole in which the light enters.

## Step 7



- Open and remove the new light bulb from its box with clean hands to prevent from getting the bulb dirty.

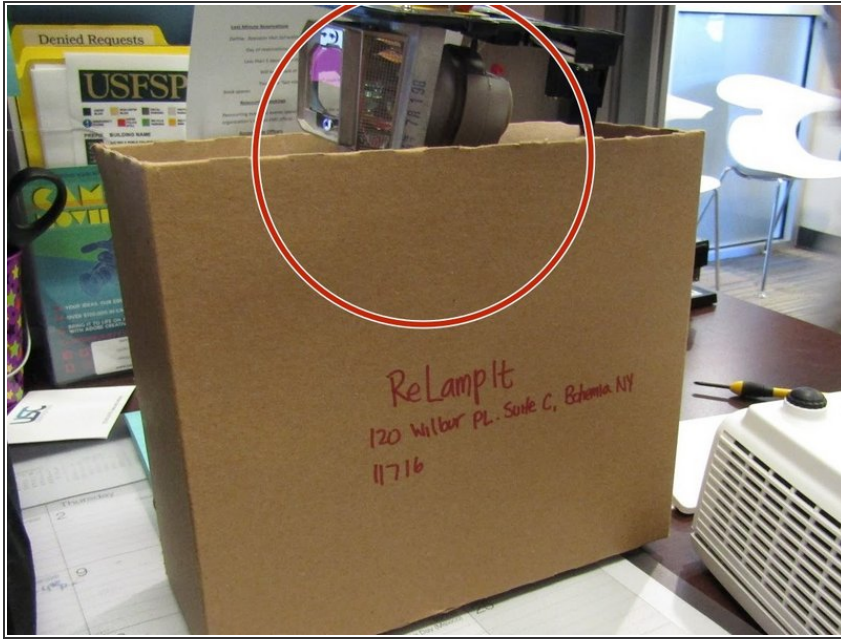
## Step 8



- Place the new bulb inside making sure to align the bulb towards the light hole and the wire connector towards the wire receiver.



## Step 9



- Dispose of the bulb by sending it to a recycling center.

To reassemble your device, follow these instructions in reverse order.