



# 2006 Ford F-150 Door Handle Cable Replacement

If your door is damaged, stuck, it will not open or close; you need to remove the door handle, cover, latch or cable, you have come to the right place.

Written By: Francisco Garcia



---

## INTRODUCTION

This guide will show you how to remove the door handle, the main and two upper panels, the bottom latch, and the cable itself in a simple and safe way. This fix should take about 10 steps.

---



### TOOLS:

- [6mm Allen Socket](#) (1)
  - [Phillips #2 Screwdriver](#) (1)
  - [Flathead 3/32" or 2.5 mm Screwdriver](#) (1)
  - [Slip Joint Pliers](#) (1)
  - [3/8" Drive Ratchet](#) (1)
-



## Step 1 — 2006 Ford F-150 Door Handle Cable Replacement



- Remove the plastic cover from the door handle using a 7.6 cm slotted screwdriver.
- Insert the screwdriver into the small opening found at the top of the plastic cover.
- Carefully tilt the screwdriver upward to remove the plastic cover.

## Step 2



- Remove the two 6 mm hex screws using a 6mm socket.
- Turn the screwdriver counter-clockwise to loosen and remove the screws.
- Grab the door handle and remove it from its location.

### Step 3



- Remove the top plastic cover by pulling outward to snap it out of its location.

 There are not any screws to remove in this part.

### Step 4



- Remove the other plastic cover by pulling outward to snap it out of its location.

 There are not any screws to remove in this part.



## Step 5



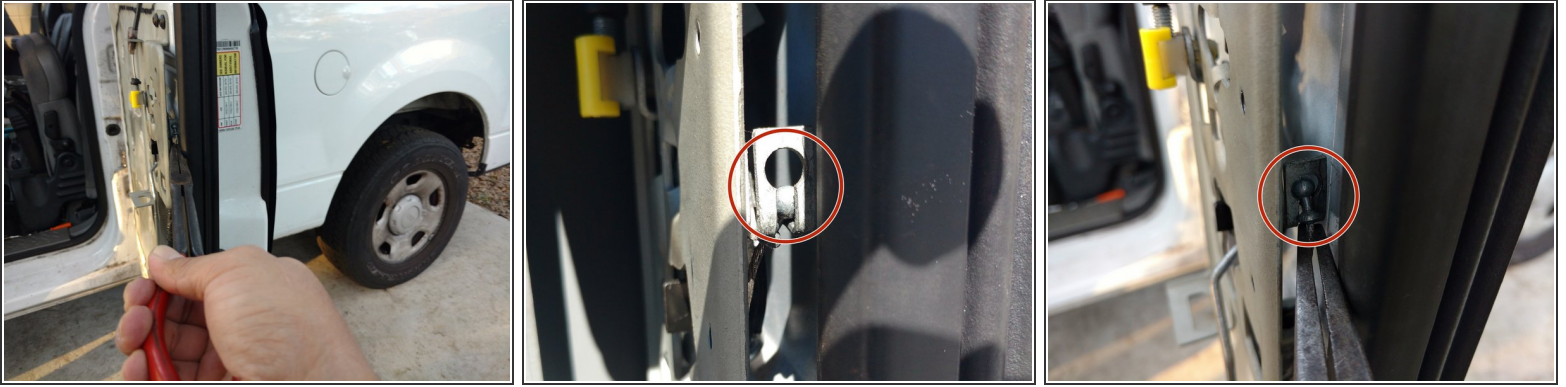
- Remove the three 6 mm hex screws off the main door cover using a 6 mm socket. There are two screws at the top and one at the bottom.
- ⓘ The panel itself should stay in place even after the screws have been removed.
- ⓘ The door panel is maintained in place by plastic hooks behind it.

## Step 6



- Gently, but with a strong force, lift the door cover about an inch or two high. Then, carefully pull it outward.
- ⚠ Be careful not to damage the plastic hooks that are keeping the door in place.


## Step 7



- Snap out the upper end of the cable out of its location.
- i* The upper end of the cable has a shape of a little ball. The little ball is found by where the door handle was removed.
- Using a plier, lift the cable high enough so that the little ball can come out through the round opening above it.

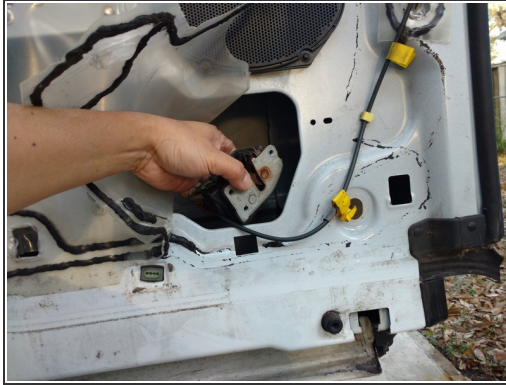
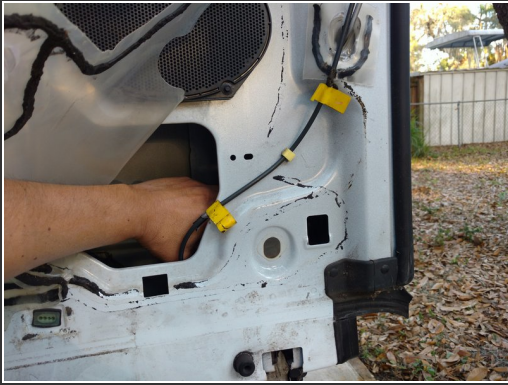
## Step 8



- Remove the three T27 hex star screws using a tamper torx screw driver. The screws are found at the bottom of the door.
- i* You may need a mechanic creeper to lay under the door.
-  Wear protective goggles if you lay down under the door to do this step.



## Step 9



- Insert your hand inside the bottom of the door to retrieve the door latch.

## Step 10



- Remove the end of the cable out of its location.

To reassemble your device, follow these instructions in reverse order.