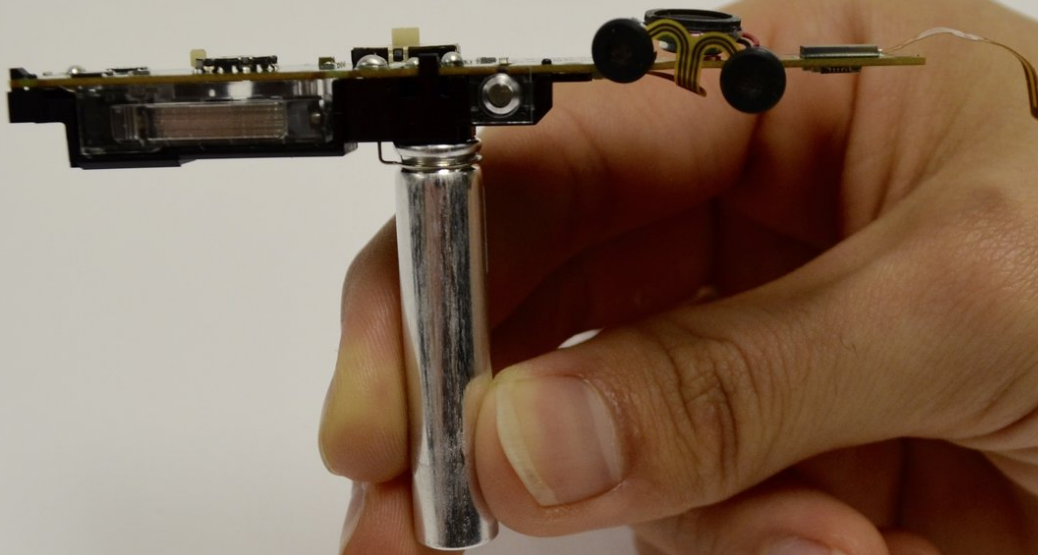




# Panasonic Lumix ZS50 Flash Assembly Replacement

This guide will show you how to replace the flash component in the ZS50.

Written By: Bridget Lathrop





## TOOLS:

- [iFixit Opening Tools](#) (1)
- [Spudger](#) (1)
- [Phillips #00 Screwdriver](#) (1)
- [Phillips PH000 Screwdriver](#) (1)

## Step 1 — Battery



- Turn the camera off and identify the battery door located on the bottom of the camera.

## Step 2



- Slide the "open" latch to the left: the battery door should spring open.
- ⓘ If your battery door doesn't open you may have to pry it open using a plastic opening tool or a standard spudger.

## Step 3



- To release the battery, slide the white release lever next to the SD card slot.
- ⓘ If you find the battery release lever to be jammed you can push it using a plastic opening tool or standard spudger.

## Step 4



- The battery should now be released; you may now remove the battery from the camera body.

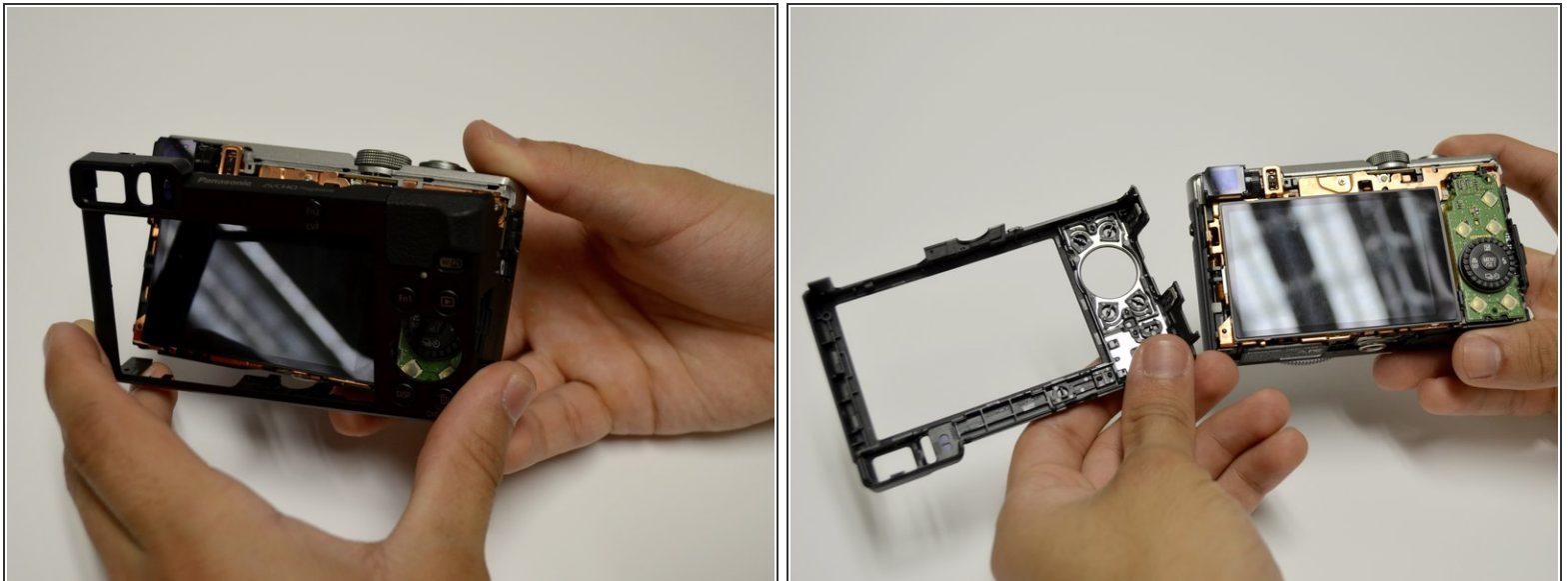


## Step 5 — LCD Screen



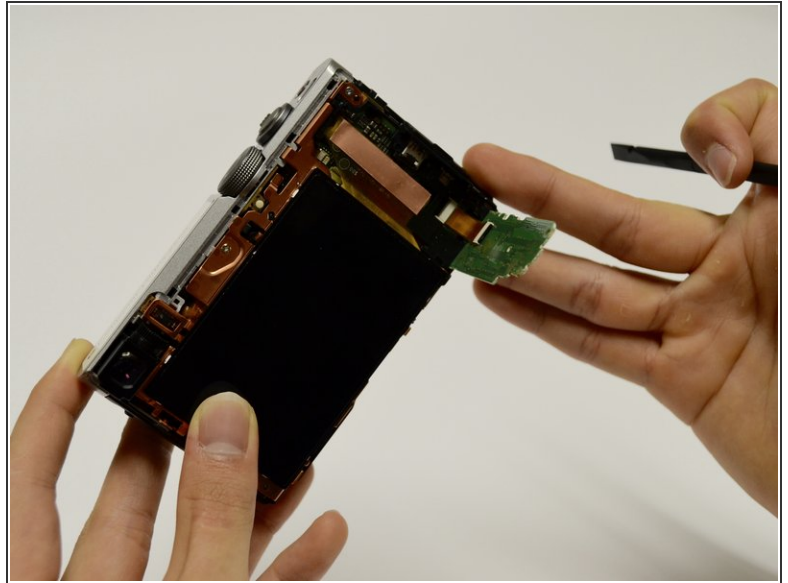
- Orient the camera so the bottom is facing up and the battery door is on the right side.
- Remove four black screws from the bottom of the camera.
- Remove two black screws from the right side of the camera.
- Remove one black screw from the left side of the camera.

## Step 6



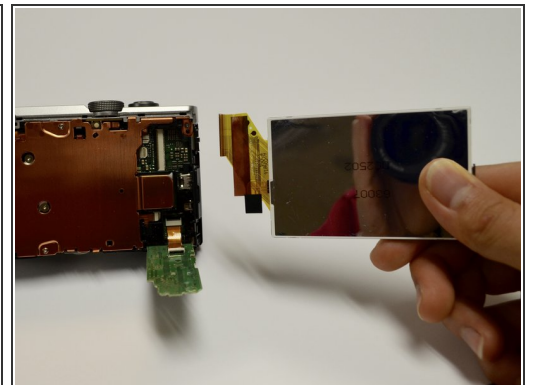
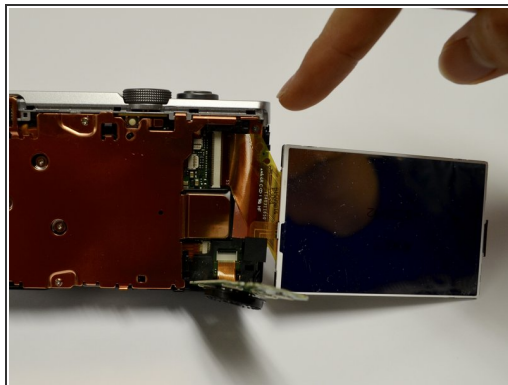
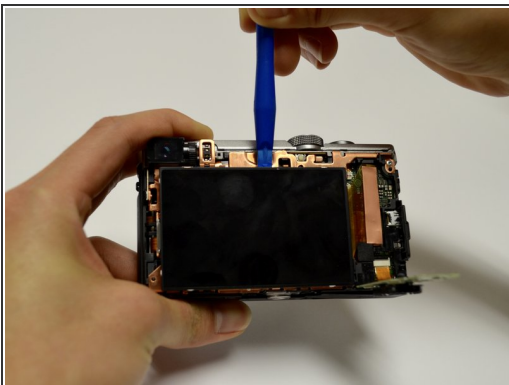
- Remove the casing from the camera by hand or using a plastic opening tool.

## Step 7



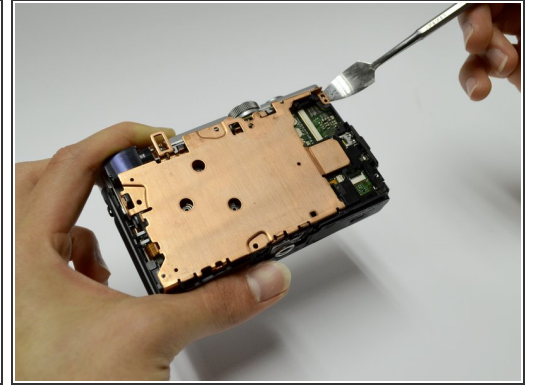
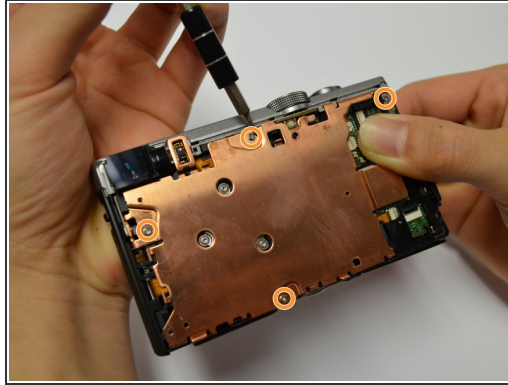
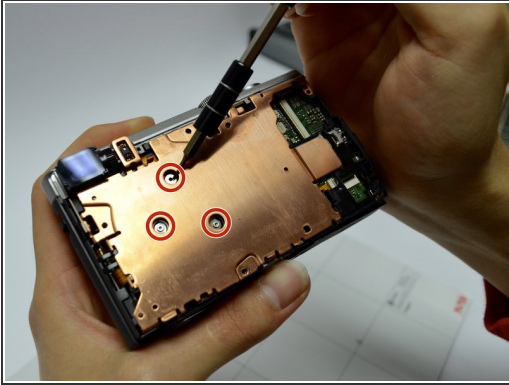
- Use a spudger to lift up and tug off the green button board.
- Be careful to not damage the attached ribbon cable.

## Step 8



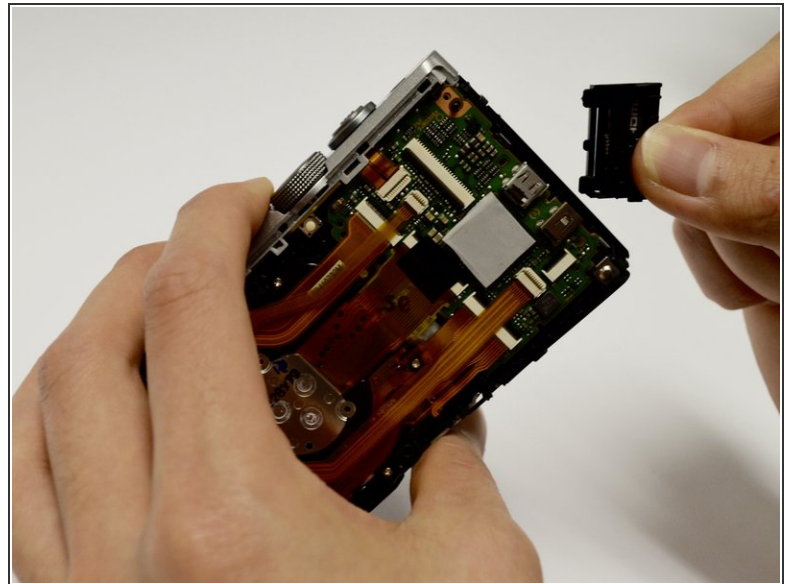
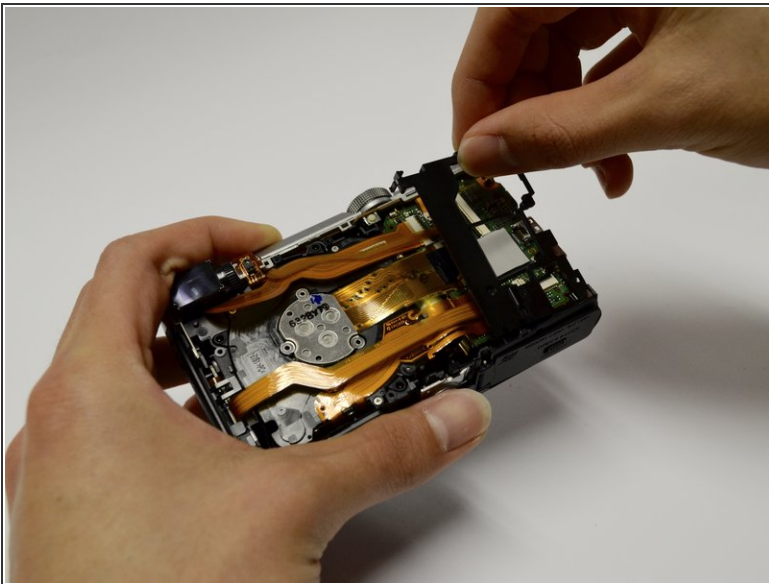
- Remove the screen using the plastic opening tool, prying from the top.
- Once it's lifted up, tug lightly on the large ribbon cable to detach the screen from the camera body.

## Step 9 — Lens Assembly



- Remove the three screws from the center of the copper plate.
- Remove the four screws from the outer edges of the copper plate.
- Use a plastic or metal spudger to pry the copper plate out of place.

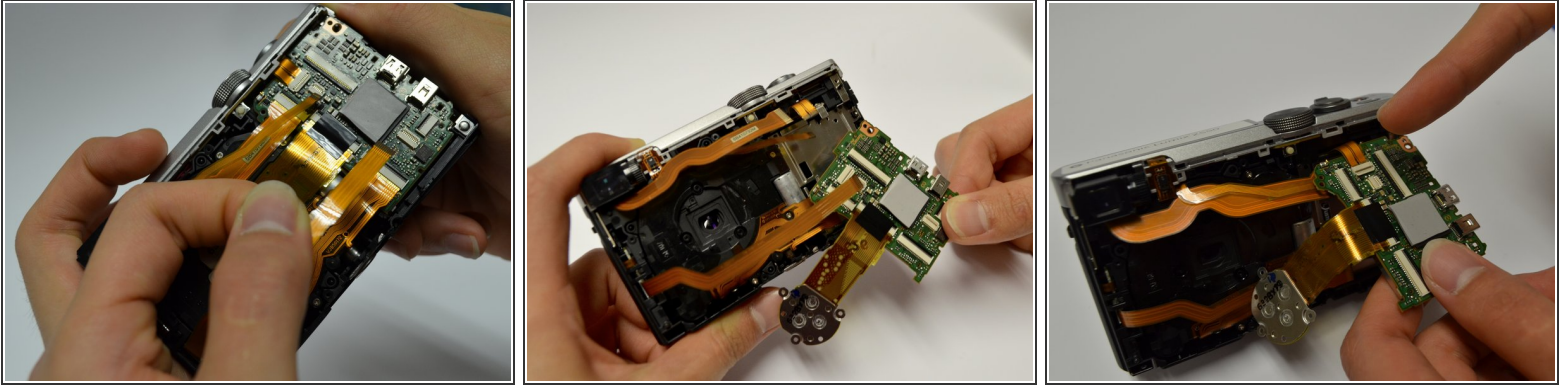
## Step 10



- Remove the casing from the circuitboard by hand.
- Remove the HDMI port casing by hand.

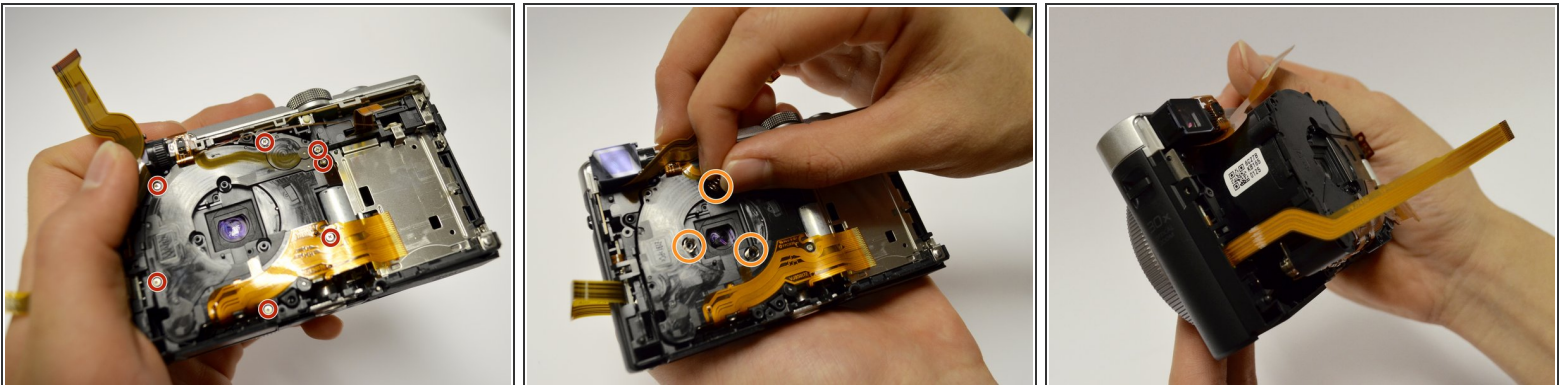


## Step 11



- Disconnect all orange ribbon cables connecting to the circuitboard by hand.
- Disconnect the circuitboard by hand.
- There will be one orange ribbon cable attached to the top that can now be removed.

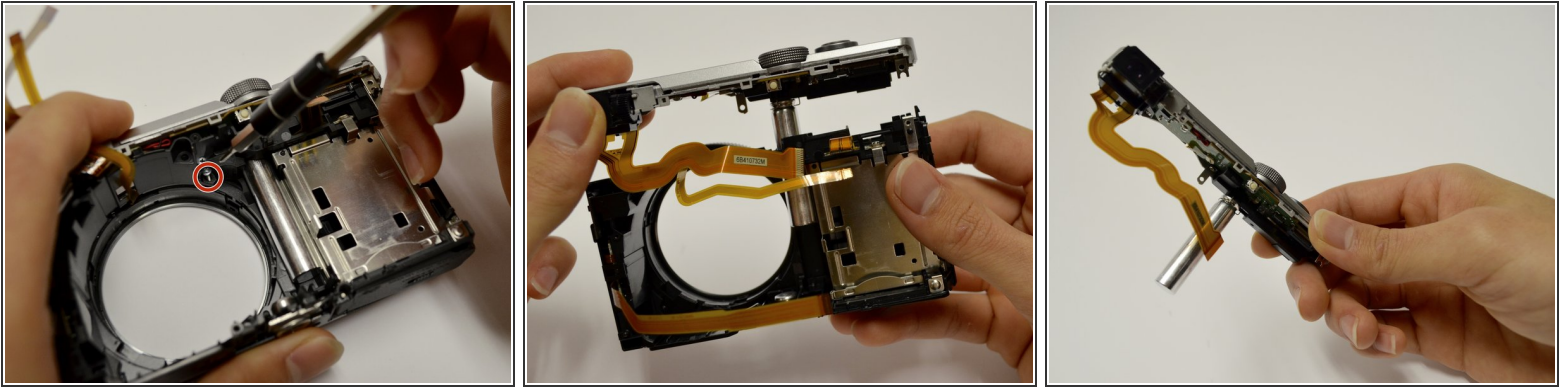
## Step 12



- Remove the seven screws surrounding the lens assembly.  
⚠ Move all ribbon cables out of your way while unscrewing.
- Remove the three springs surrounding the lens.
- Apply pressure on the front of the lens to push the lens out.

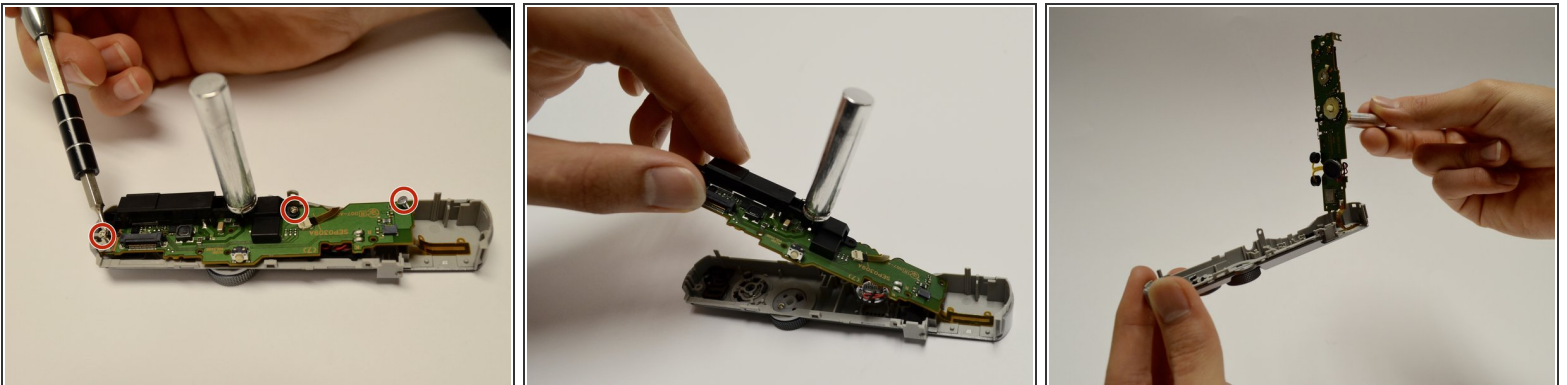


## Step 13 — Flash Assembly



- Remove the one screw holding the camera and the flash component together.
- Gently pull the flash component out of the camera body.

## Step 14



- Separate the top camera casing from the flash component by unscrewing the three surrounding screws.
- Remove the flash assembly, including the circuit board, by detaching it and the ribbon cables from the casing.

To reassemble your device, follow these instructions in reverse order.