



M8s OTT TV BOX Teardown

Written By: Austin Pollard



INTRODUCTION

Outline what you are going to teach someone how to do.

TOOLS:

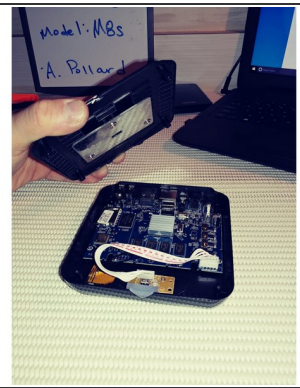
- [Mako Driver Kit - 64 Precision Bits](#) (1)
 - [Metal Spudger](#) (1)
-


Step 1 — M8s OTT TV BOX Teardown



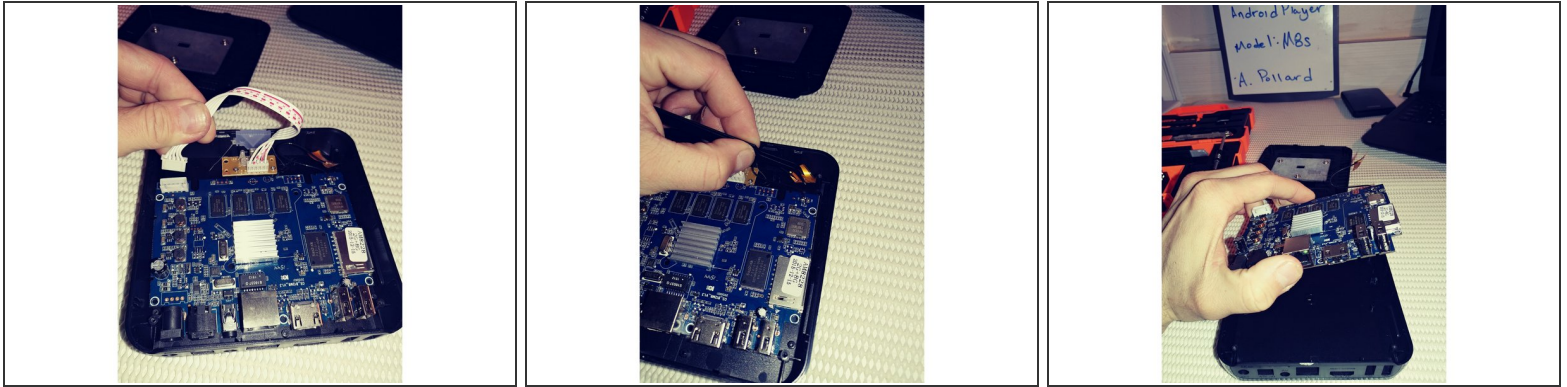
- Remove 4 circle pads to access the 4 screws. Using a Philips head screwdriver, remove all 4.

Step 2 — Remove the bottom



- Remove the 4 circular pads, then using a Phillips screwdriver. Remove the 4 screws.
 - Using the metal spudger in the slits parallel to the Seal you will be able to separate the two piece's.
-  The piece should come off easily.

Step 3



- With a firm grip at the base of the cable pull up and away from board.
- Locate the 4 screws, then using the Phillips screwdriver remove them.
- ⚠ Before the board can be removed, be sure to use your tweezers to untape the antenna from the housing.
- The board should come out with ease.

Step 4 — Remove the LED board



- Using your Phillips head screwdriver remove the 2 screws that hold the unit to the housing

Step 5 — Remove the steel heat plate



- With your Phillips head screwdriver, remove the 3 screws that hold it in place.
- The device has been effectively disassembled.

⚠ Next I will guide you through a Detailed inspection of the main circuit board.