



Art Tube MP AMP 12 AX7A Tube Replacement

Changing the tube is very simple. There is a total of 6 Screws to loosen, the tube is just plugged in.

Written By: Alex Krug



INTRODUCTION

I will show in this Guide how to replace the 12 AX7A Tube in your Tube Art MP easily and without complications.



TOOLS:

- [Phillips #1 Screwdriver](#) (1)
- [Smart Wrench](#) (1)
- [Spudger](#) (1)



PARTS:

- [New Item](#) (1)

Step 1 — 12 AX7A Tube



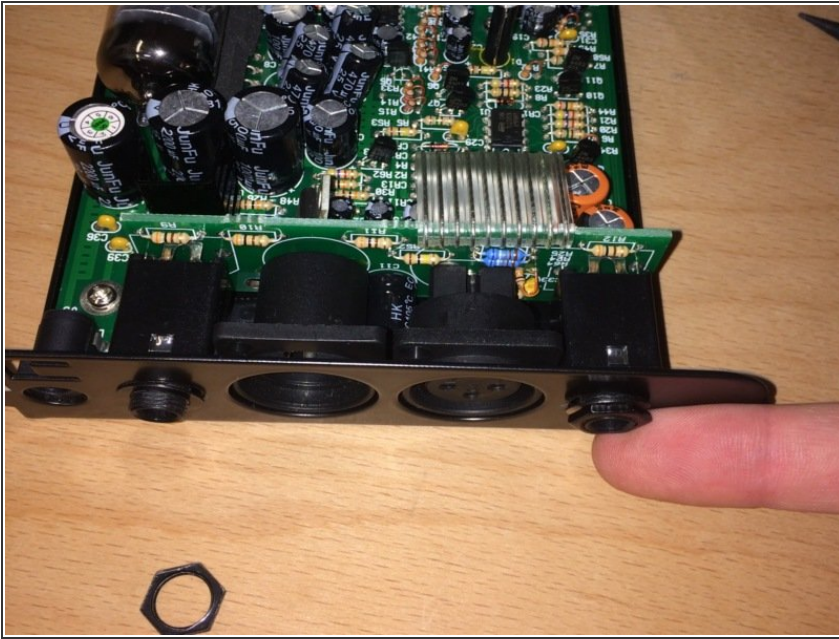
- Loosen the 4 screws sideways the device, using a PH1

Step 2



- Use the Smart Wrench to loosen the two In- and Output controllers. Attach the Smart Wrench below the controller.
- Be careful not to damage the surface.
- Now you can lift up the top of the device, and the mainboard appears.

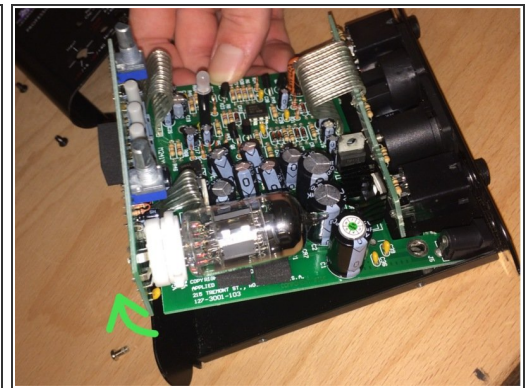
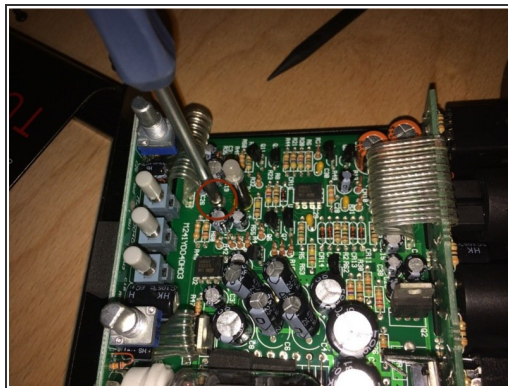
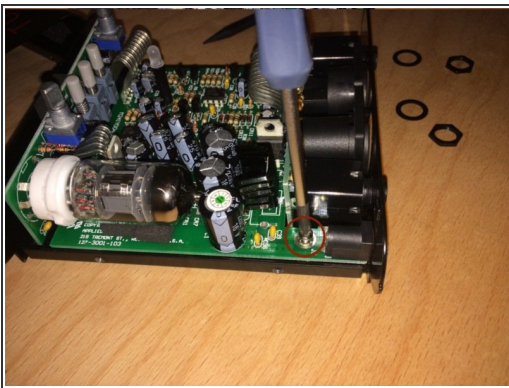
Step 3



- Use the Smart Wrench again to loosen the cinch ports on the backside.

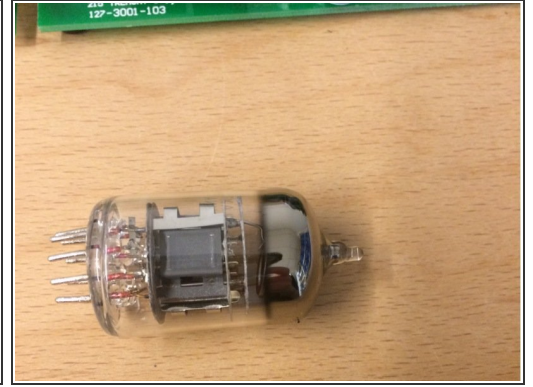
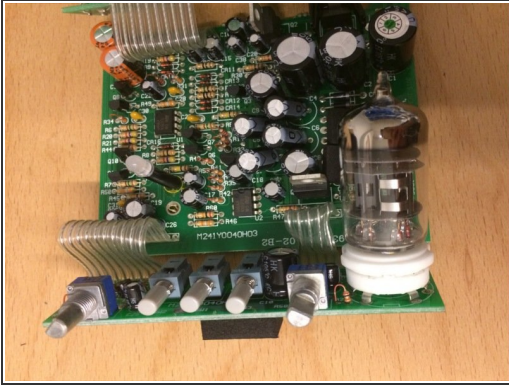
⚠ Attention! Do not lose the washers located at the in- and outside. Two pieces each.

Step 4



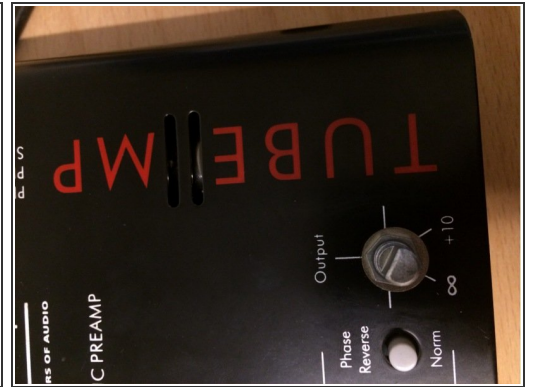
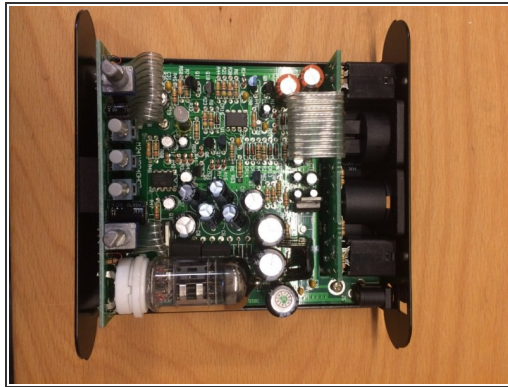
- Use the PH 1 to unscrew 2 screws on the motherboard.
- Now you can take the board out completely
- Attention: There are again 2 washers.

Step 5



- Carefully bend the tube up to get a better view
- Remove the tube with a cloth from the socket, a metal spudger can help
- Insert the new tube
- ⚠ Use cloth so that no residues accumulate on the surface.

Step 6



- Finally just reassemble all parts.
- Be careful to tighten all the screws and ports, otherwise internal vibrations could cause damage to your device.
- First put the cinch ports in to get the mainboard back in place.

Congratulations you did it :)

This document was generated on 2021-01-12 07:03:39 PM (MST).

