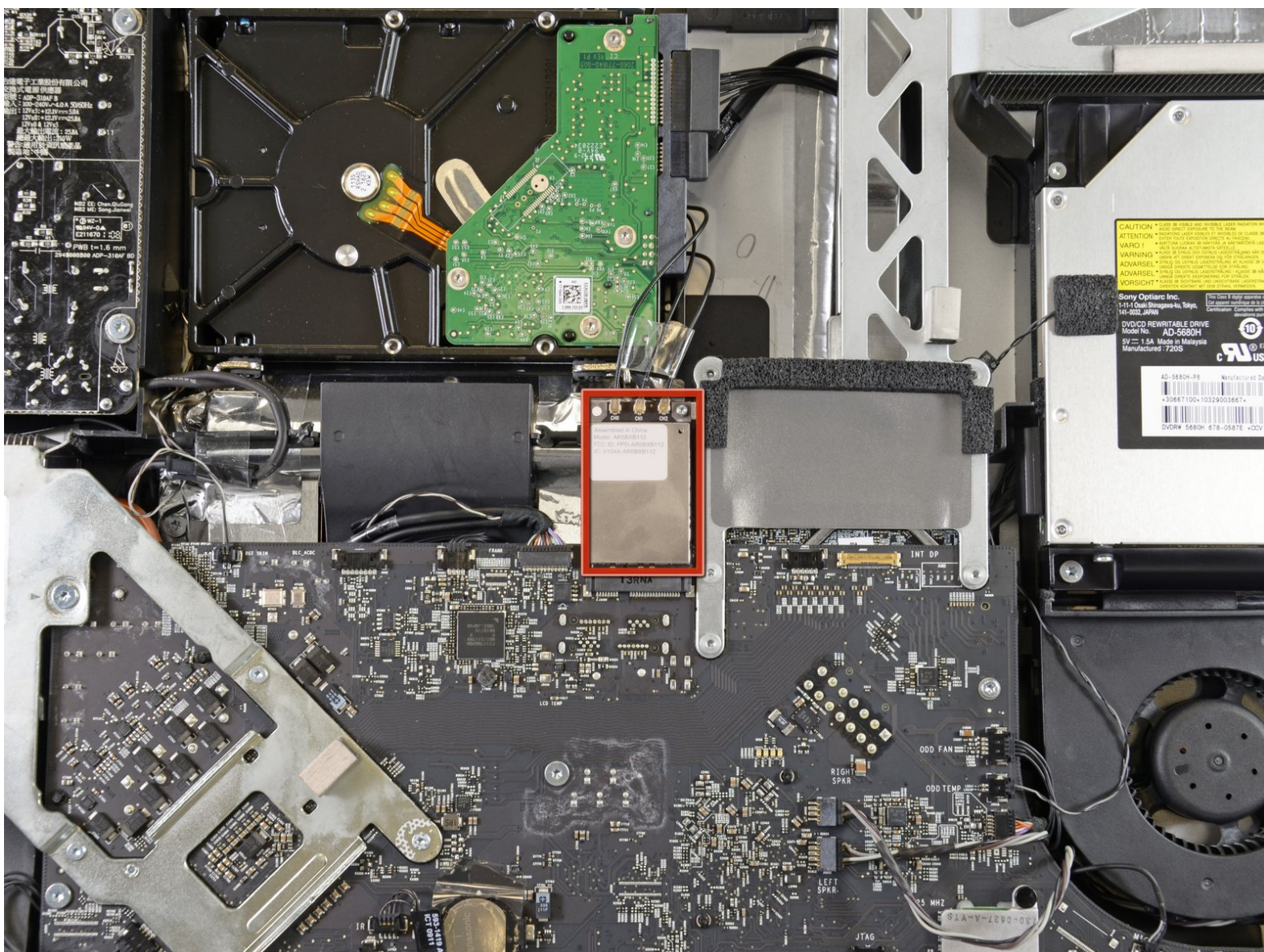




# iMac Intel 27" EMC 2429 AirPort Card Replacement

Use this guide to replace the AirPort card.

Written By: Phillip Takahashi



---

# INTRODUCTION

Use this guide to replace the AirPort card.

---

## TOOLS:

- [Heavy-Duty Suction Cups \(Pair\)](#) (1)
  - [Paper Clip](#) (1)
  - [Spudger](#) (1)
  - [TR10 Torx Security Screwdriver](#) (1)
  - [T6 Torx Screwdriver](#) (1)
-

## Step 1 — Glass Panel



- Stick a heavy-duty suction cup near each of the two top corners of the glass panel.
- ⓘ To attach the [suction cups](#), first position the suction cup with the movable handle parallel to the face of the glass panel (as indicated in the second picture).
- While lightly holding the suction cup against the glass, raise the movable handle until it is parallel with the other handle (as indicated by the third picture).
- ⓘ If your suction cups refuse to stick, try cleaning both the glass panel and the suction cup with a damp soft, lint-free cloth. (Dampen with distilled water, and if needed, an equal ratio of distilled water and white vinegar for best results.)
- ⚠ Do not use the suction cups to carry the display glass because if one of them fails to stick, you could drop the screen and break it.
- ⓘ The original iMac box makes a good place to store the glass panel. Otherwise, a padded horizontal surface, like a towel on a desk, will do nicely.

## Step 2



- Gently lift the glass panel perpendicular to the face of the LCD, enough to clear the steel mounting pins attached along the underside of the top edge of the glass panel.
- Pull the glass panel away from the lower edge of the iMac and carefully set it aside.
  - ⚠ Don't use the suction cups to carry the glass panel—if either one loses its grip, the panel could fall and break.
  - ⚠ After setting the glass panel down safely, be sure to release the suction cups, as the suction force over time can crack the glass.
- 🔧 During reinstallation, be sure to meticulously clean the inside of the glass panel and the face of the LCD as any dust or fingerprints trapped inside will be annoyingly visible when the machine is turned on.



## Step 3 — Display

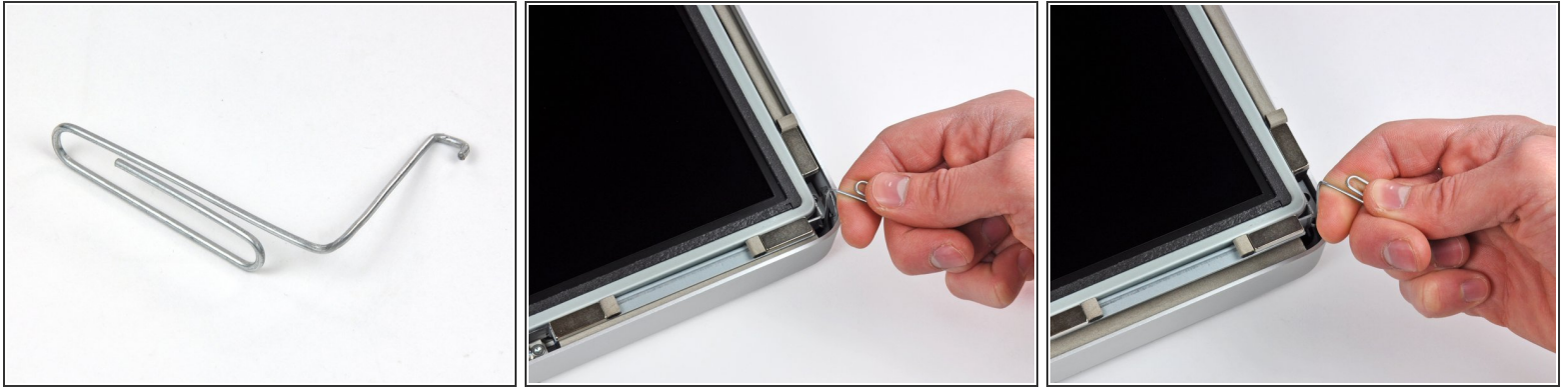


- Remove the eight T10 Torx screws securing the LCD to the outer case.

⚠ Be careful not to touch the display as the oil from your fingers may leave a residue that can be difficult to remove.

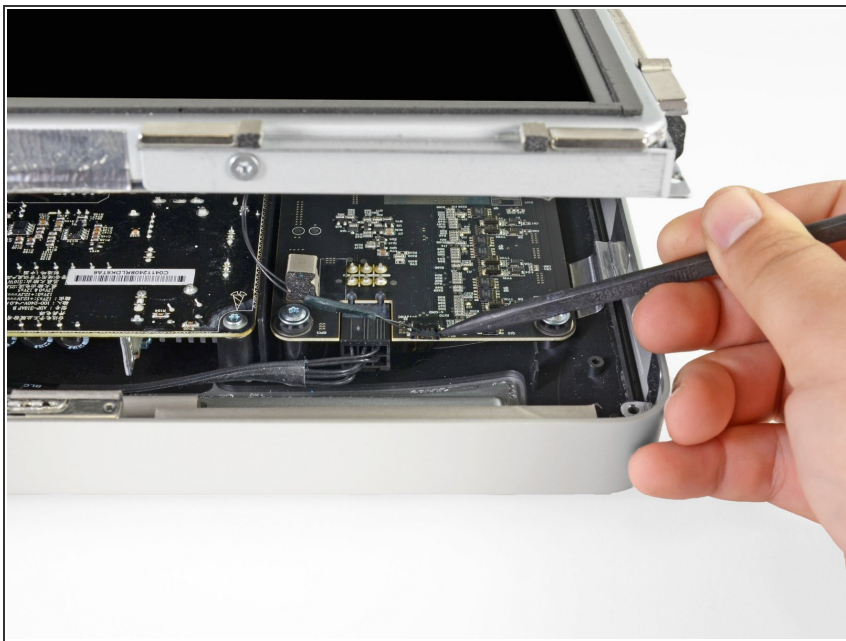
ⓘ If necessary, peel the EMI gaskets located near the top center edge of the display assembly.

## Step 4 — Display



- Carefully lay the iMac stand-side down on a flat surface.
- ⓘ Due to tight tolerances, you will have to use a thin hooked tool to lift the display out of the outer case. As seen in the first picture, we made one out of a bent paperclip. A pair of angled tweezers can also work well.
- Use a thin hooked tool to lift one side of the top edge of the display by its steel outer frame.
- ⓘ After lifting the top edge of the display on one side, hold it out of the outer case while you use a hooked tool to lift the other side.
- Raise and hold the display high enough to access the cables.
- ⚠ Do not lift the top edge of the display out of the outer case too far, as several short ribbon cables still connect the two components.

## Step 5



- Disconnect the vertical sync cable in the upper left corner of the screen. Use the tip of a spudger to push on the connector's side tabs and gently **walk** it out of its socket.

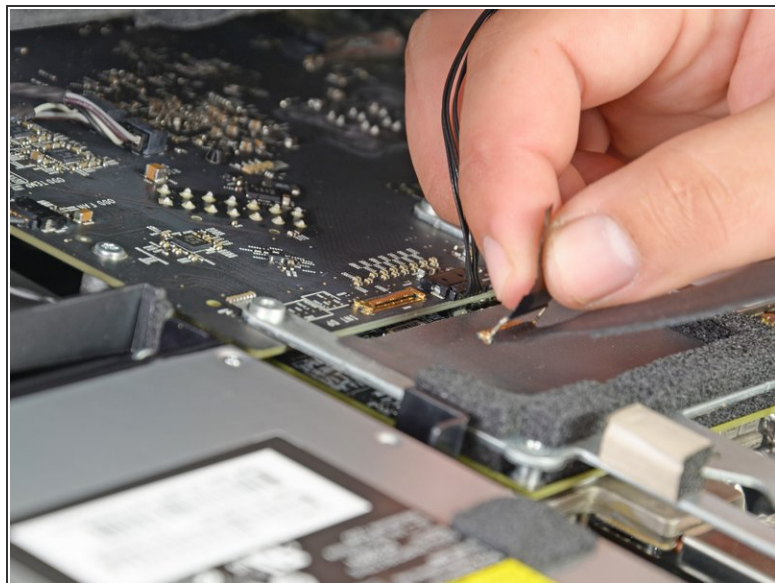
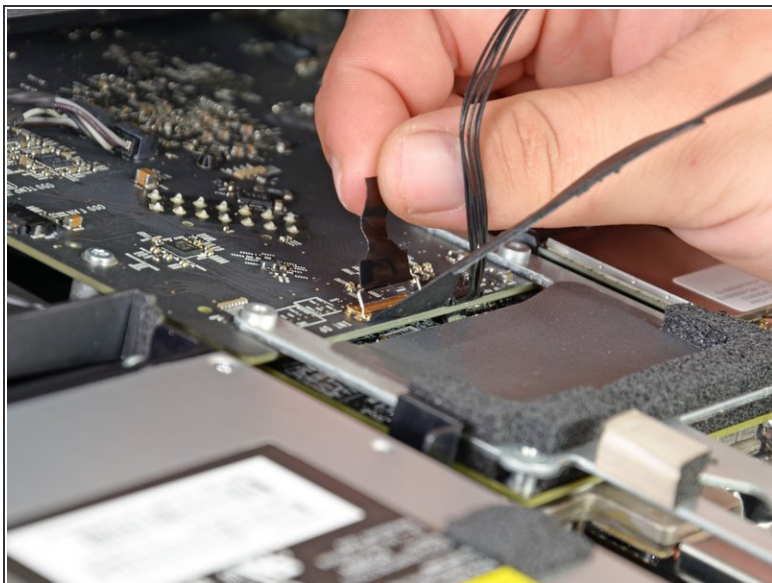
## Step 6



- ⚠ This step brings your hands close to the exposed rear of the power supply. To avoid a high-voltage shock from the many large capacitors attached to the board, do **NOT** touch the rear of the power supply.
- Disconnect the LED backlight driver cable with your hand by pressing the tab down and sliding it towards the bottom of the display.

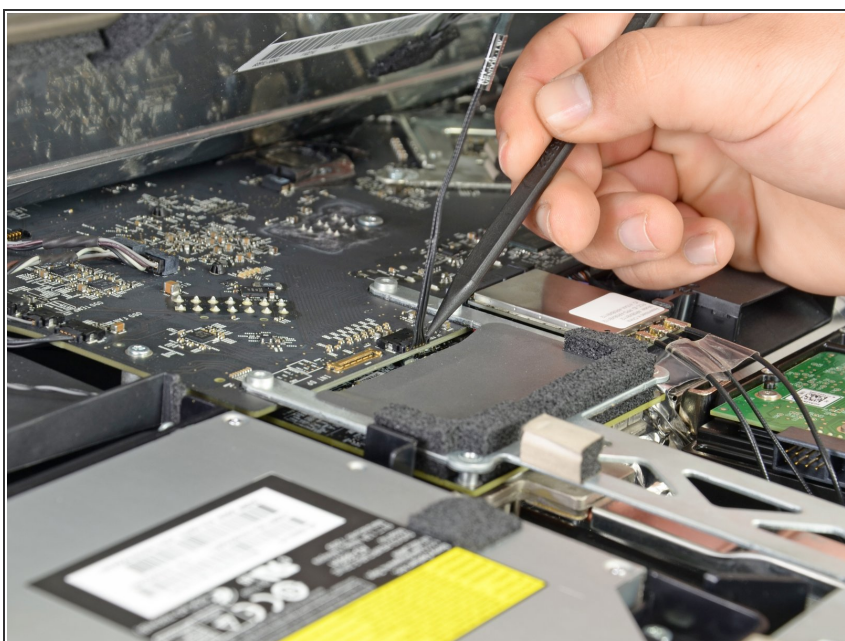


## Step 7



- Pull the black tab straight up to disconnect the latch on the display data cable ZIF connector.
- ⚠ Do not pull up too hard or you will damage the connector and socket.
- Continue to pull the black tab up toward the top of the device, to detach the display data cable.

## Step 8



- Use the tip of a spudger to disconnect the display power cable next to the display data cable.



## Step 9



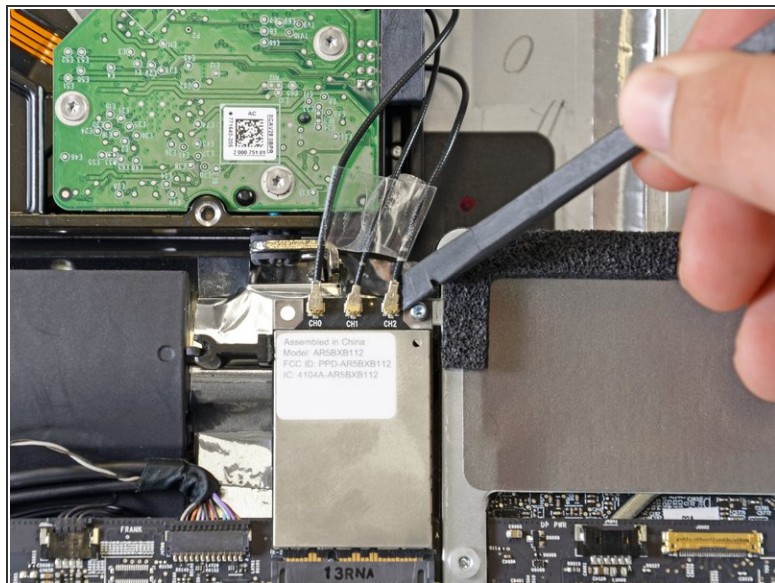
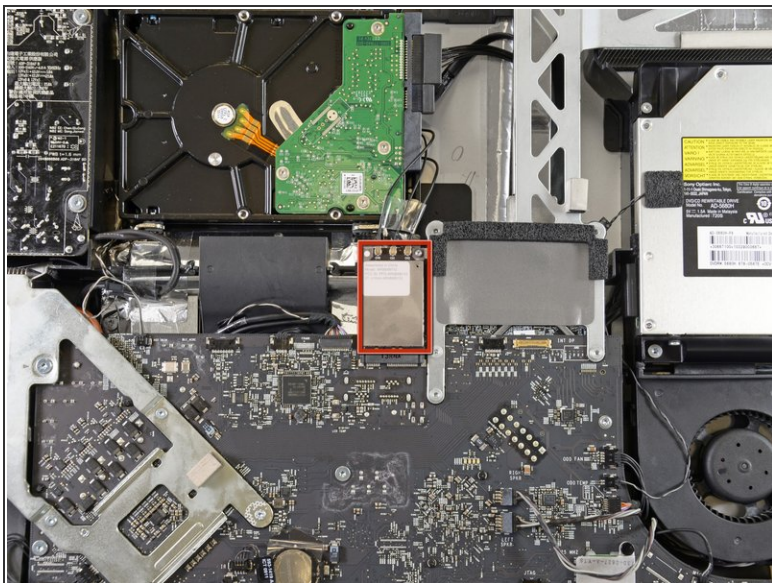
- Carefully pull the display toward the top edge of your iMac and lift it out of the iMac case.

## Step 10



- Lay the display face down on a flat, soft surface.
- ❗ If you are replacing the display panel, you will need to transfer additional components from the old panel to the new one. Compare the back of the old display with the replacement display. Note all cables, sensors, and foam cushioning that are missing from the new display.
  - If there is a wire or cable underneath adhesive tape, always pull the tape off first. Do not pull on the cable directly.
  - If the cable is glued to the chassis, use a heated iOpener or a hair dryer to soften the adhesive first. You can then slide an opening pick underneath the cable to loosen it. Never pull on the delicate connectors.
  - Slide an opening pick underneath the foam cushion pieces to separate them from the display, and gently pull them off. You may need some double sided tape to re-attach them to the new display.

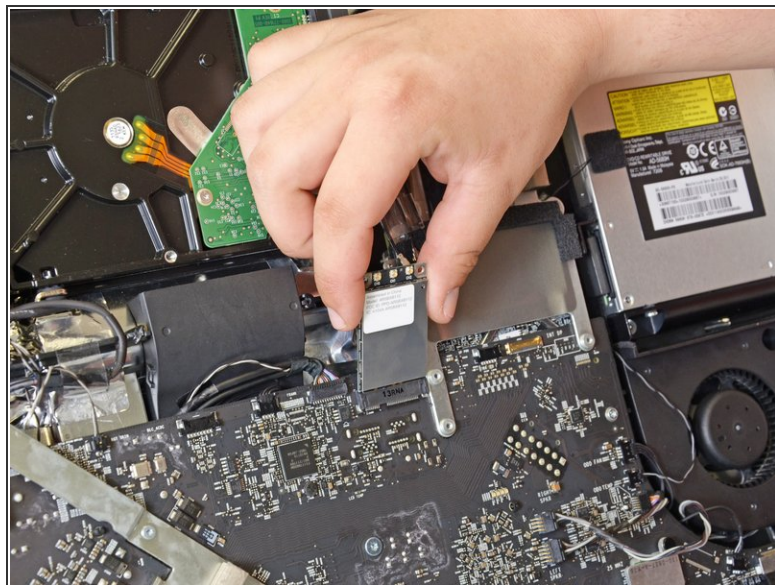
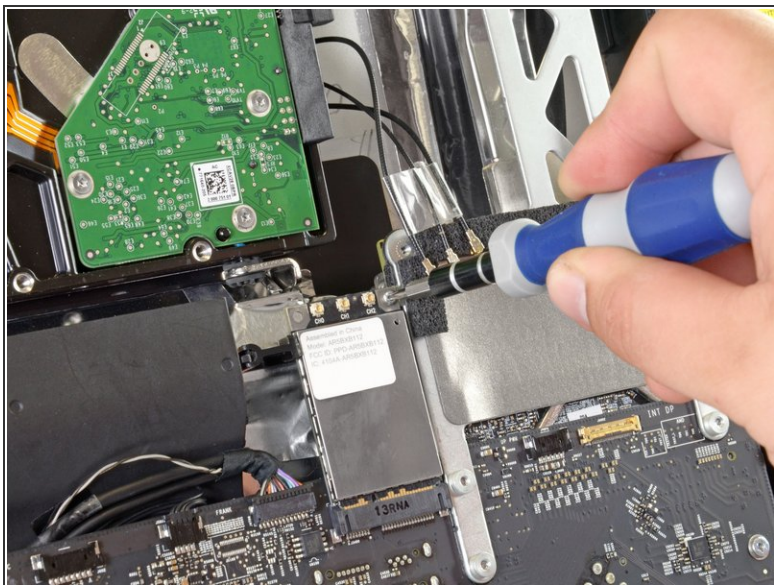
## Step 11 — AirPort Card



- Locate the AirPort card at the top center of the logic board and just below the hard drive.
- Use the flat end of a spudger to gently pry each of the antenna cables off their sockets.
- ⚠ Do not disconnect the antennas by pulling on the cables as this may damage the cables, connectors, or sockets.
- ⓘ The antennas have markings to help you identify their order. The antenna with no marks goes to "CH0", the antenna with one mark goes to "CH1", and the antenna with two marks goes to "CH2".



## Step 12



- Remove the T6 Torx screw securing the AirPort card to the logic board frame.
  - ⓘ The card will begin to tilt away from the iMac case as you remove the screw. Its final resting angle should be the angle at which it is removed and reinstalled.
- Remove the AirPort card by pulling it straight out of its socket.

To reassemble your device, follow these instructions in reverse order.