



Aluratek ADMPF310F Screen Replacement

Replacing the screen in your Aluratek digital photo frame.

Written By: Chris Belair



INTRODUCTION

This guide will walk you through how to replace the screen to your digital frame. This is one of the most simplest guides and doesn't take a lot of time at all.




TOOLS:

- [iFixit Opening Tools](#) (1)
 - [Spudger](#) (1)
-

Step 1 — Screen




- Using the plastic opening tool, pry off the clips all around the frame. You will hear a popping sound for every clip

 Be sure not to pry too hard because you could crack or break the plastic facing of the device.

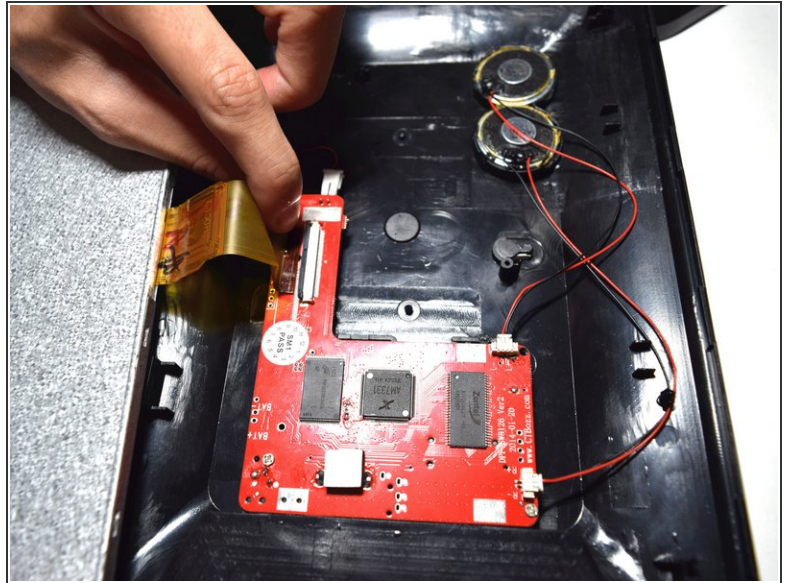
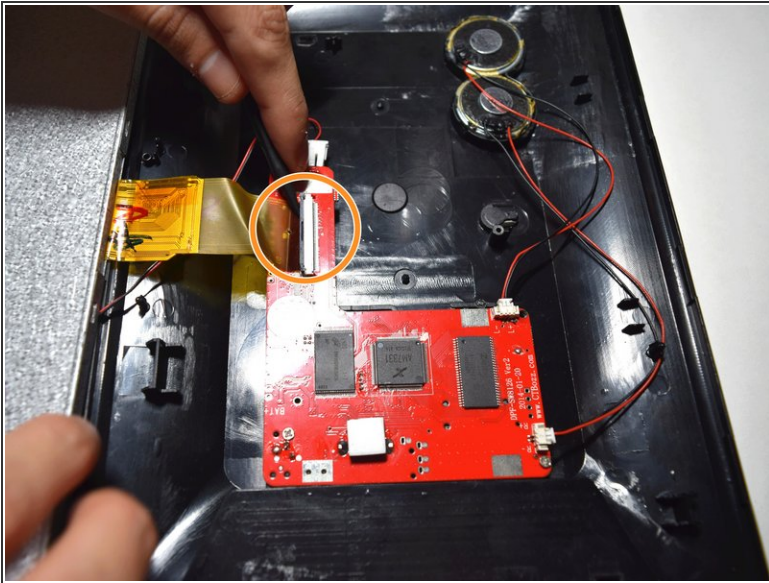
Step 2



- Lift screen out of place so you can access the plugs that connect it.

 Be careful not to pull the screen too far away when placing to the side, many fragile wires are connected.

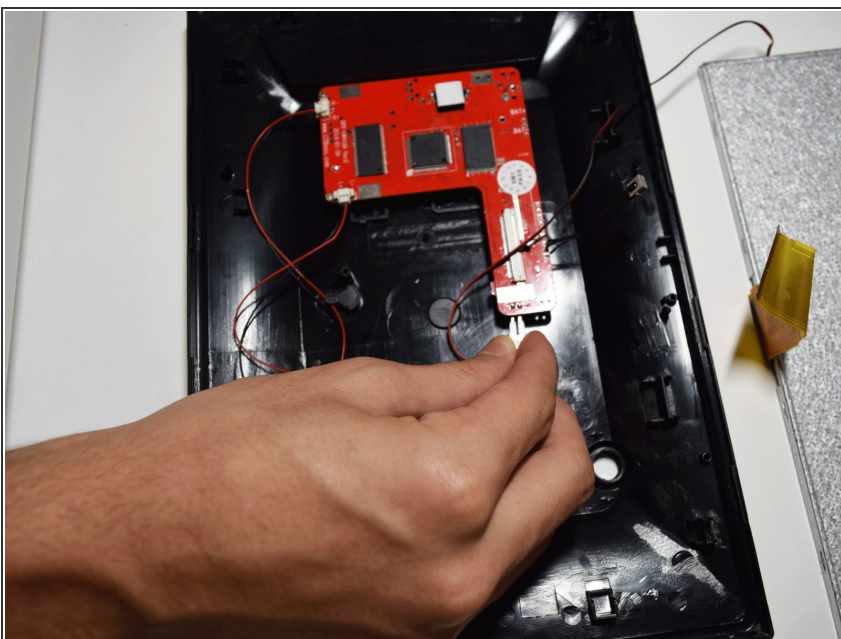
Step 3



- Using the plastic spudger tool lift the plastic zif(zero instertion force) connector clip up.
- Pull the ribbon cable away from the motherboard.

⚠ Be careful as this clip is very frail.

Step 4



- Disconnect the red and black cable connecting the screen to the motherboard by just pulling it out.

To reassemble your device, follow these instructions in reverse order.