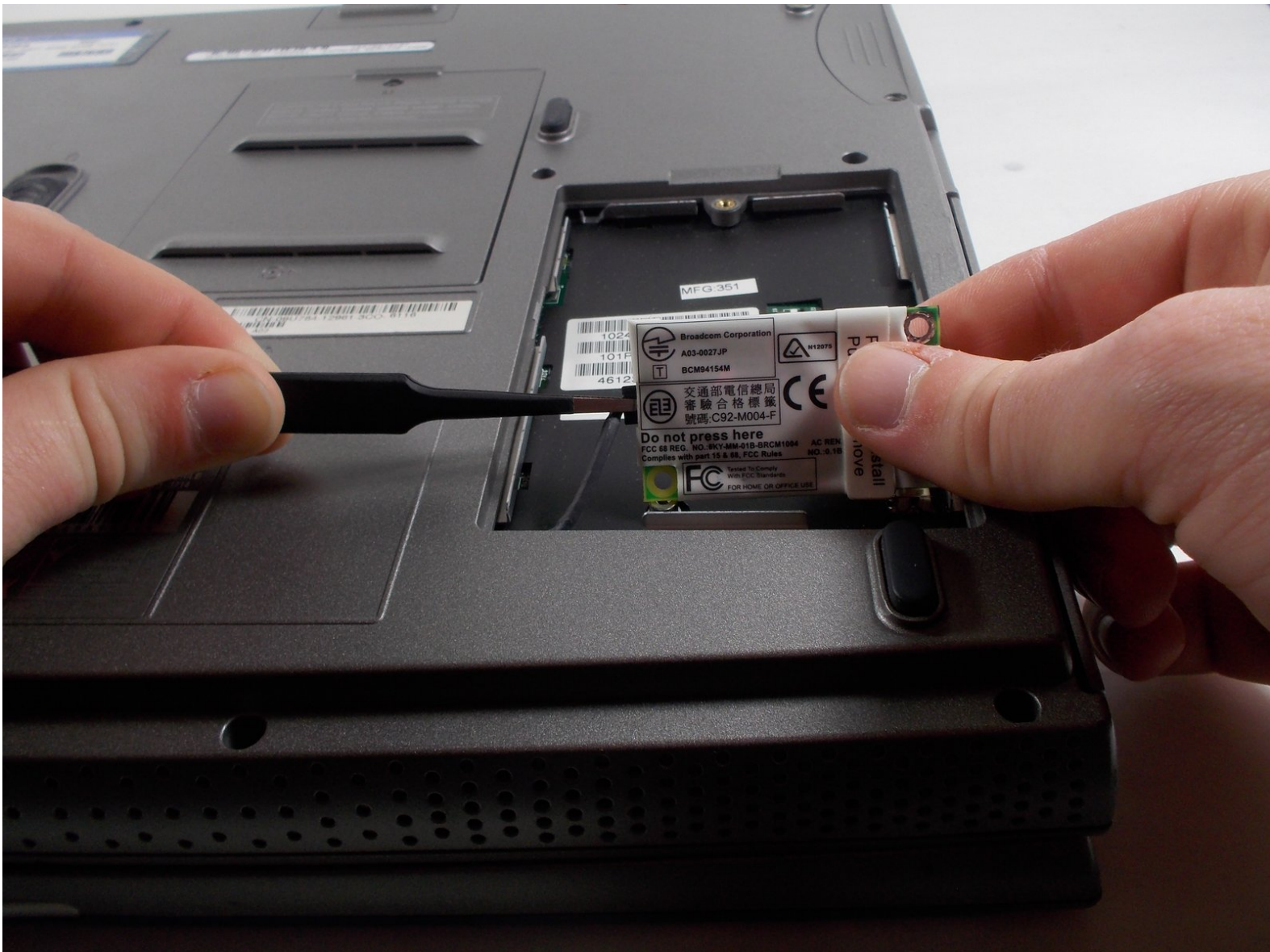




Dell Inspiron 1100 Wireless Card Replacement

This guide will demonstrate how to replace the wireless card in the Dell Inspiron 1100.

Written By: Alexander Pacheco



INTRODUCTION

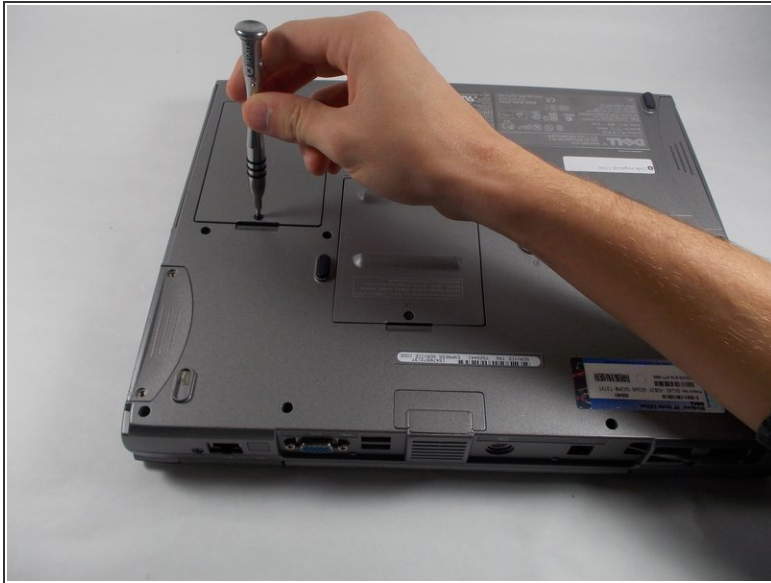
The wireless card enables the laptop to connect to wireless signals.



PARTS:

- [Phillips #0 Screwdriver](#) (1)
 - [ESD Safe Tweezers Blunt Nose](#) (1)
-

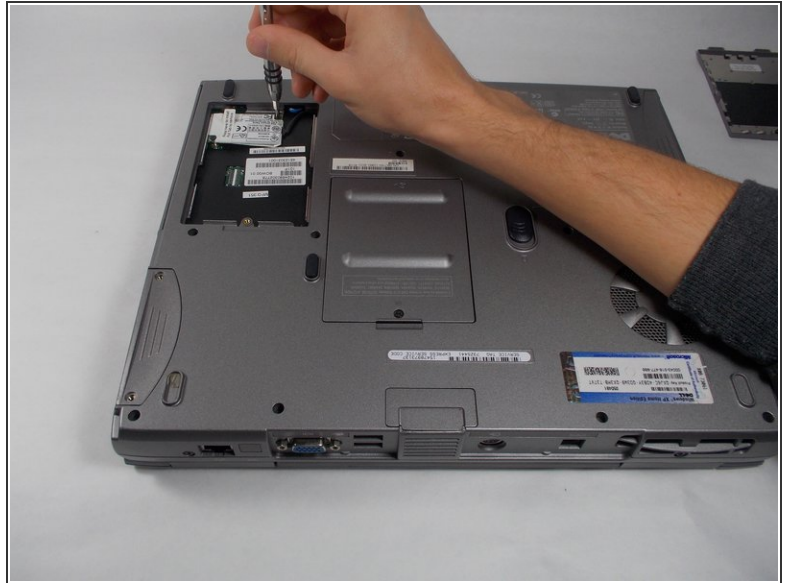
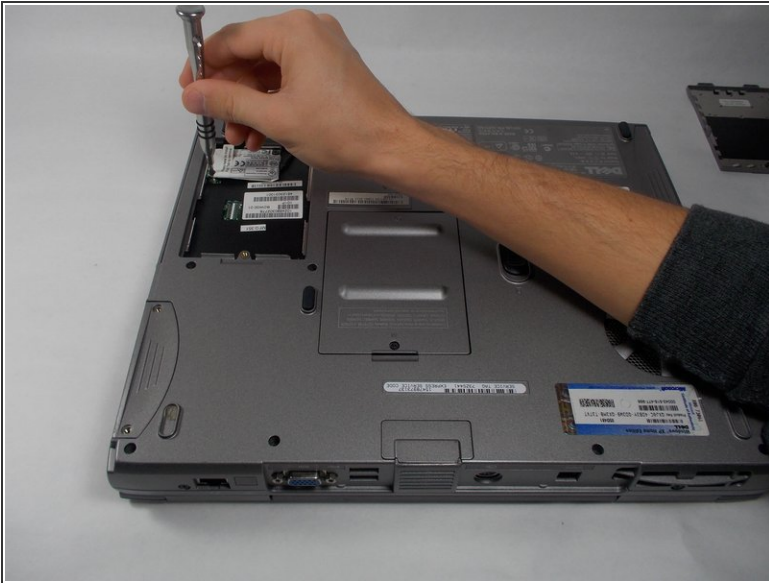
Step 1 — Wireless Card



- Unscrew the one Phillips #0 screw at the bottom of the panel and remove the panel.

⚠ The screw does not separate from the cover. Be sure the screw is completely unscrewed before using force to remove the cover.

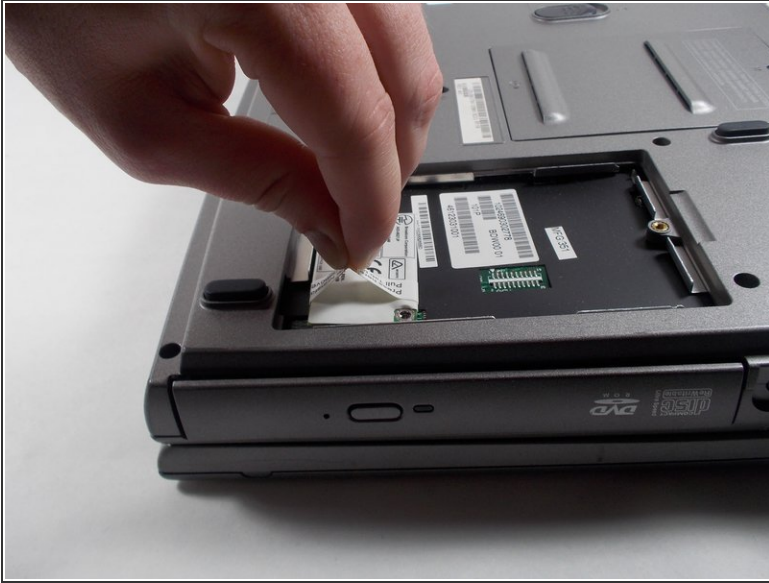
Step 2



- Unscrew the two 3mm Phillips #0 screws located on the card.

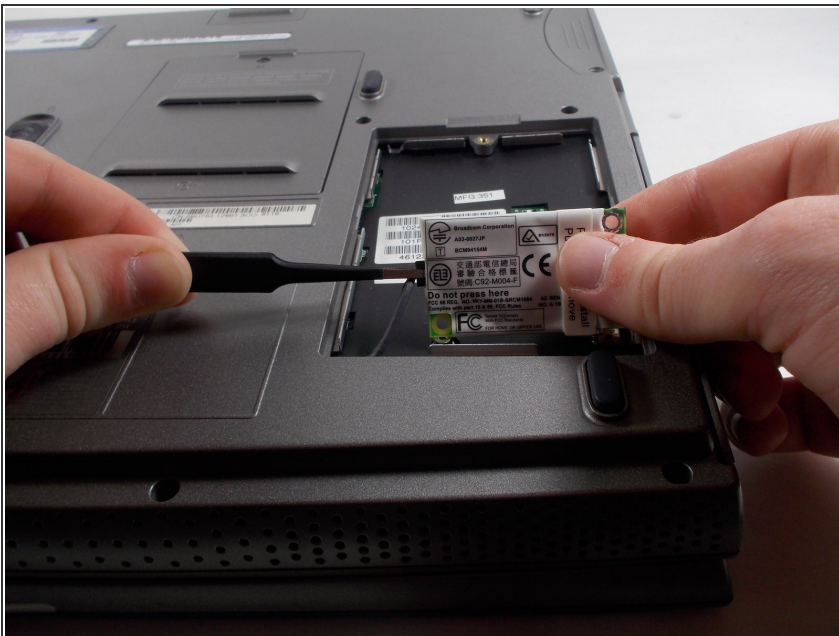
⚠ Be careful, as these screws are easy to strip.

Step 3



- Pull the white plastic tab on top of the card straight up to remove the card.
- ⓘ This step requires some light force. Be sure the screws from the previous step have been removed.

Step 4



- Use blunt nose tweezers to remove the power cable from the wireless card.
- ⚠ Make sure the tweezers are only gripping the head of the power cable and not any part of the wireless card, as this may damage the card.

To reassemble your device, follow these instructions in reverse order.