



Tungsten T3 Battery Replacement

Replace the battery in your Tungsten T3.

Written By: Whitney



INTRODUCTION

This guide will take you step by step through the process of replacing the battery in the Palm Tungsten T3.



TOOLS:

- [Paper Clip](#) (1)
- [Phillips #00 Screwdriver](#) (1)
- [Spudger](#) (1)



PARTS:

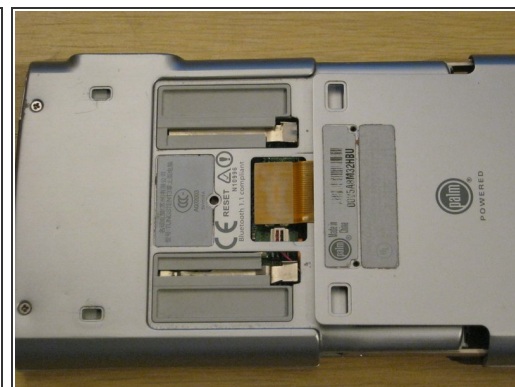
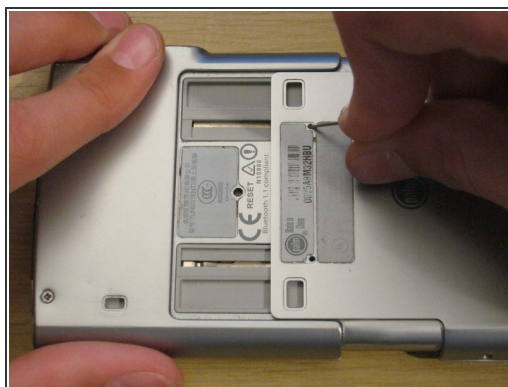
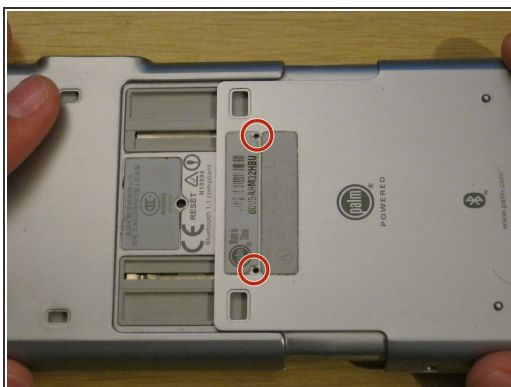
- [Tungsten T3 Replacement Battery](#) (1)

Step 1 — Battery



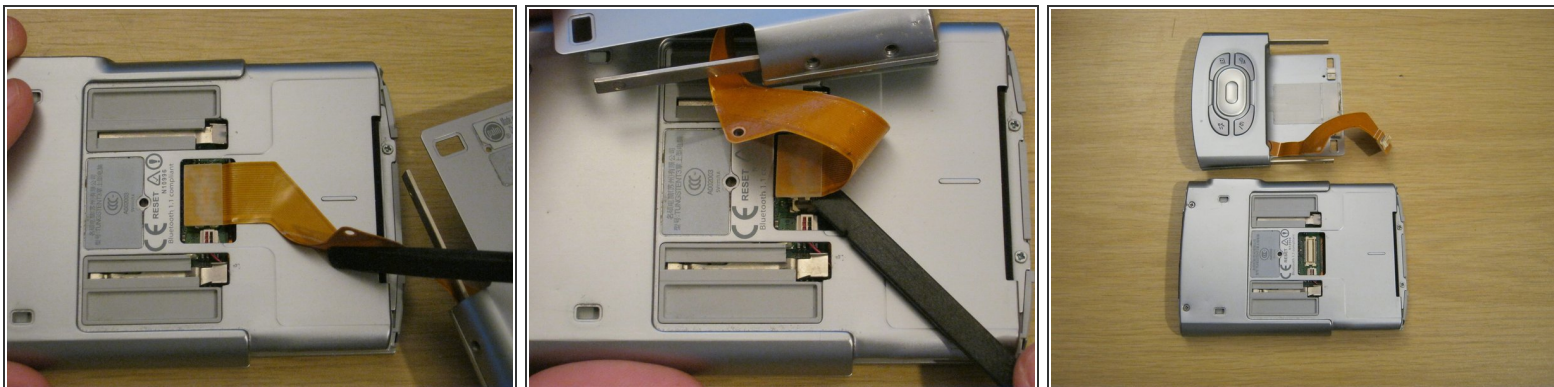
- Remove the two Phillips #00 screws on either side of the device, on the sliding panel.

Step 2




- Slide out the function panel.
- Insert a paper clip into the two marked small holes on the back and push downwards while pulling the function panel gently.
- ⓘ The connector for the buttons will be revealed.

Step 3

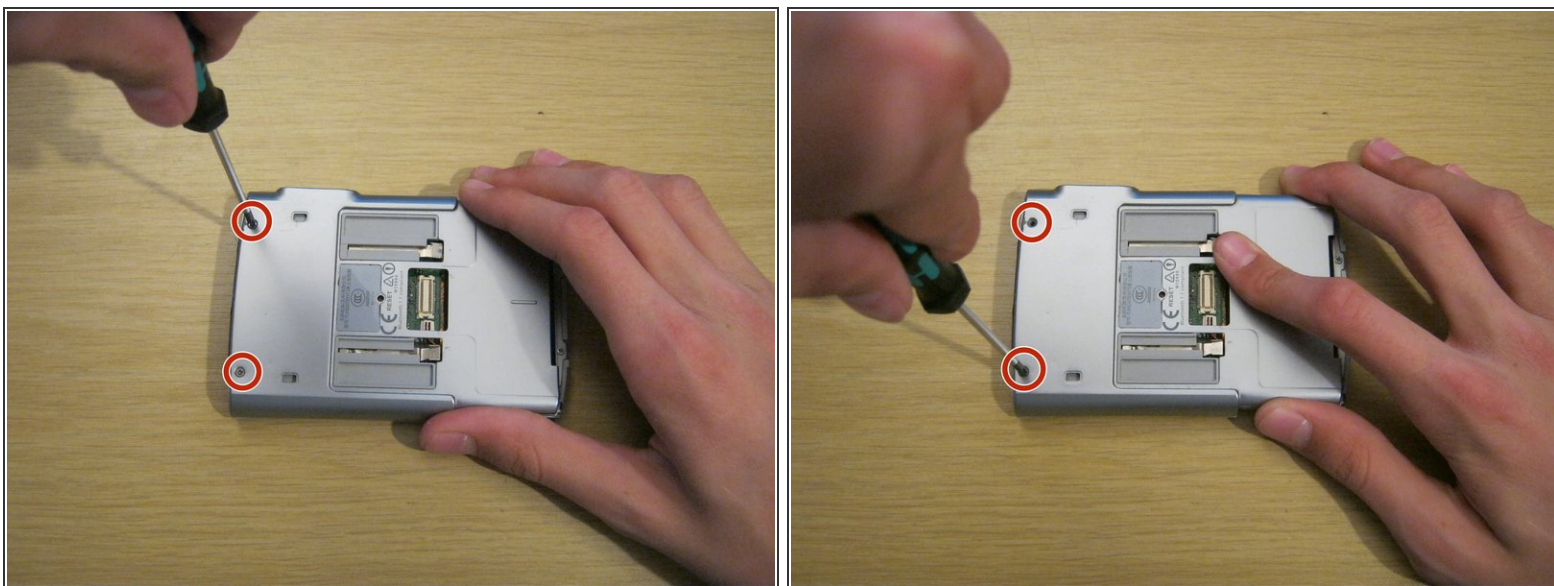


- Gently remove the function panel from the device.

 Be careful - it's still connected by the button cable. Peel the cable from the device carefully with a spudger - it is attached with a little bit of adhesive.

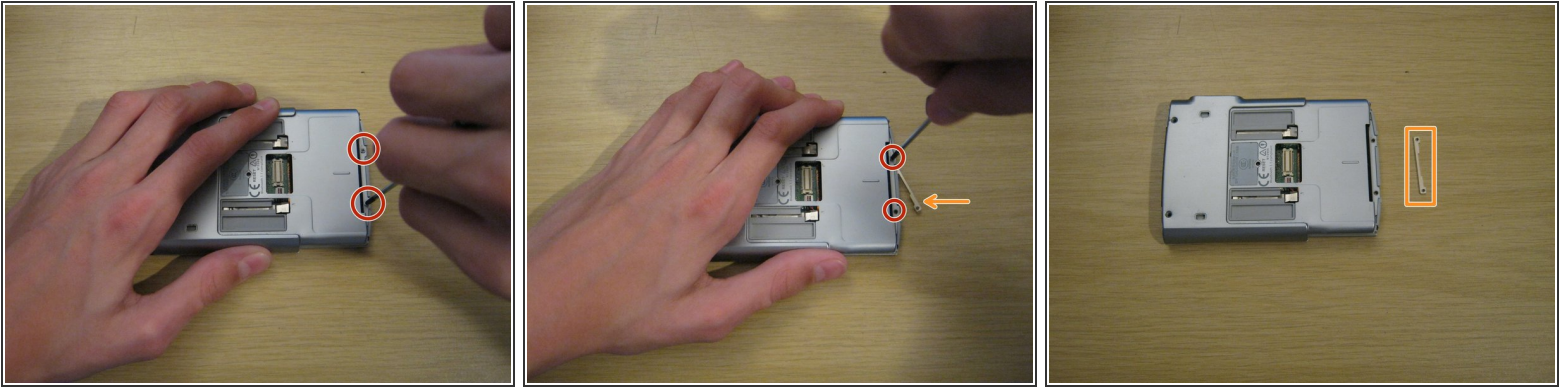
- Carefully remove the connector and set the panel aside.

Step 4



- Remove the two Phillips #00 screws on the back of the device.

Step 5



- Remove the two small Phillips #00 screws at the other end of the device.
- A small metal part will fall out of the device from the other side. Keep hold of this - you won't be able to put these screws back in without it.

Step 6



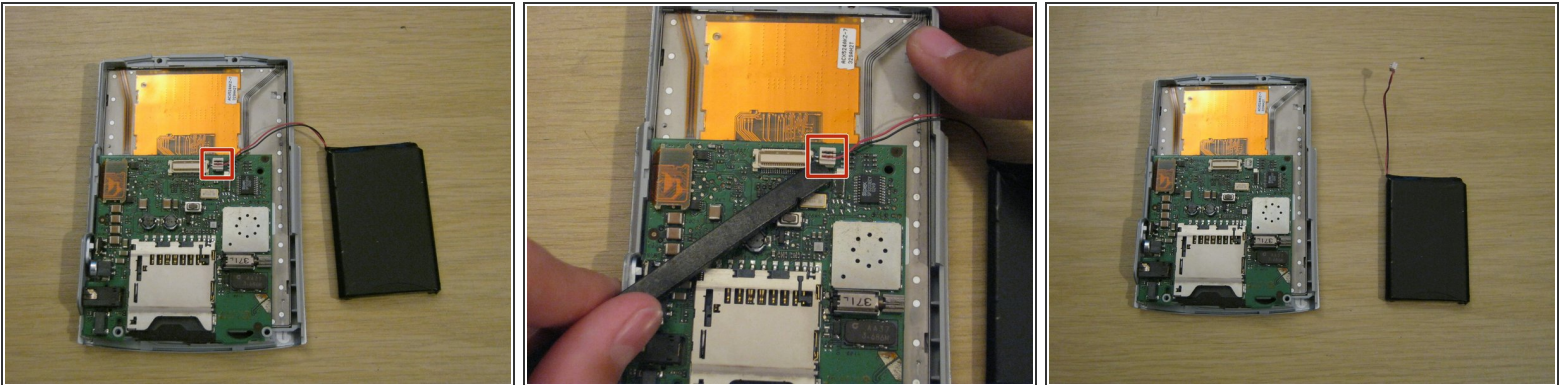
- Using a spudger, gently separate the back casing from the rest of the device.
- ⚠ Be careful - the back casing contains the battery, which is connected by a very thin battery cable.

Step 7



- Lay the two halves side by side.
- The battery is usually held to the case by a small amount of adhesive. Carefully peel it up with a spudger.
- Lay the back case aside.

Step 8



- i** You should now be left with the front panel and the battery.
- Gently disconnect the battery connector from the front panel. It's small and the pins are delicate, so be careful not to bend it.
- ☞** When you install the new battery, you may find it useful to secure it to the back casing with some double-sided tape or even a small amount of glue.

Step 9



- ✦ When reassembling your device, remember to place the small metal part on the front of the device and hold it while you insert the two small screws.
- i The screws won't stay in unless they're screwed into this metal part.

To reassemble your device, follow these instructions in reverse order.