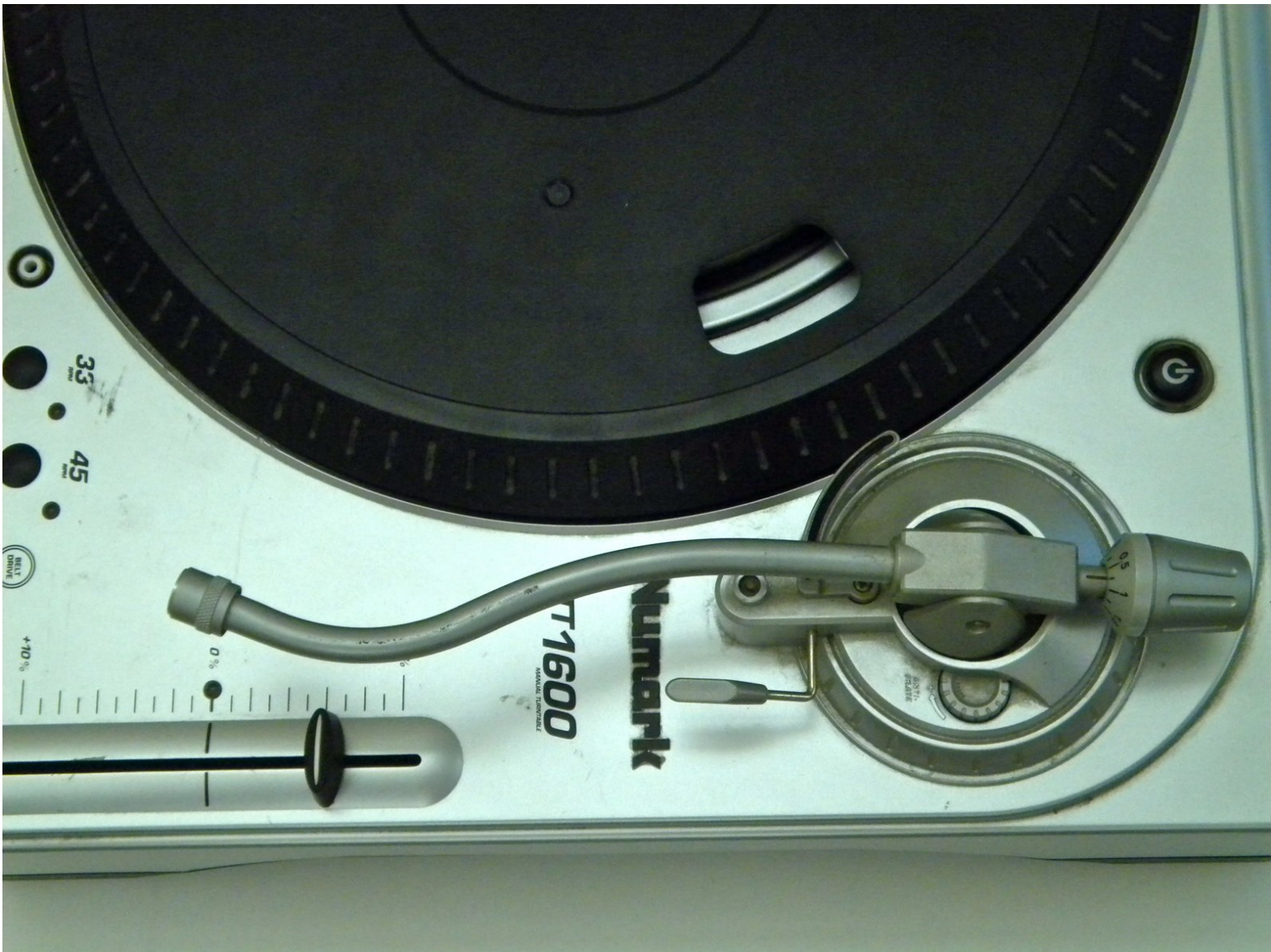




Numark TT1600 Tone Arm Replacement

How to remove the tone arm.

Written By: Nikolai





TOOLS:

- [Phillips #00 Screwdriver](#) (1)
 - [Phillips #1 Screwdriver](#) (1)
-

Step 1 — Tone Arm



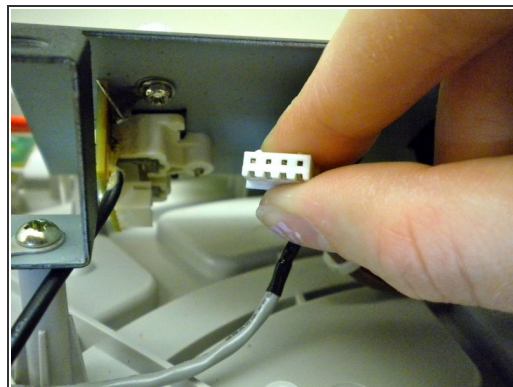
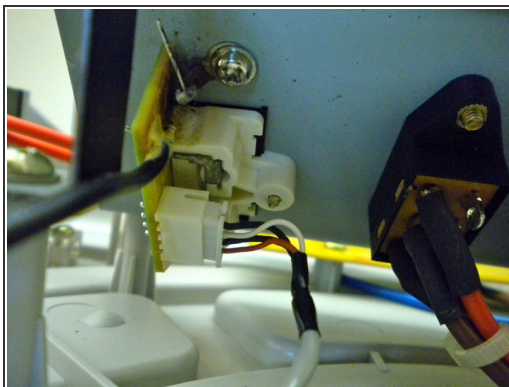
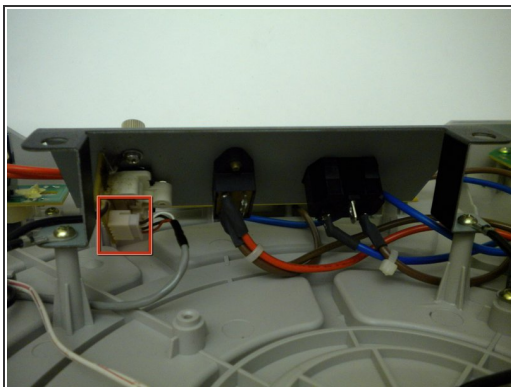
- Flip over the turntable and remove the 9 screws on the outer edges.

Step 2



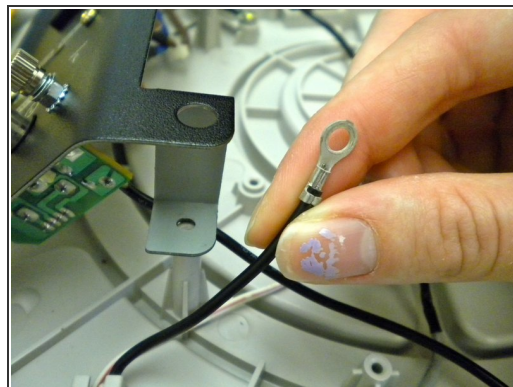
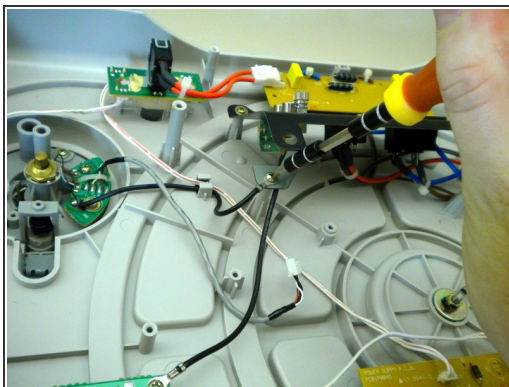
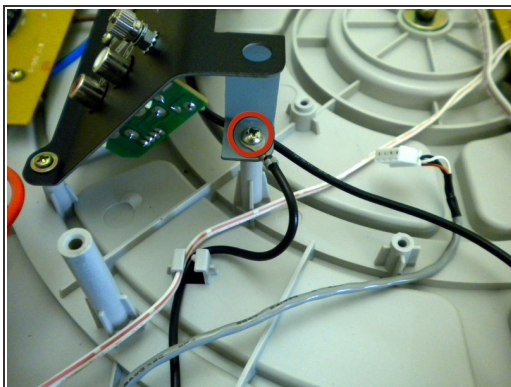
- Remove the back cover by pulling it apart.

Step 3



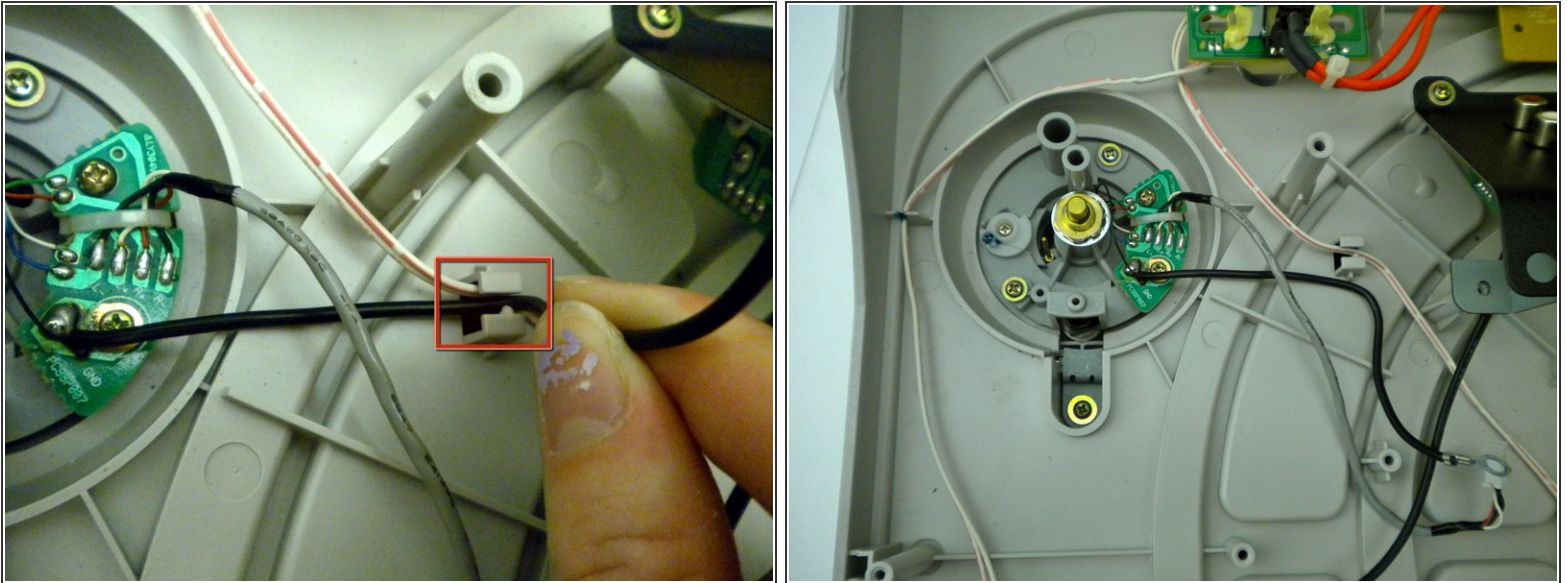
- Remove the clip located on the backside of the audio jack housing by gently pulling it out.
- ⓘ There will be some resistance but continue to pull gently.
- The clip is located right underneath the audio jacks.

Step 4



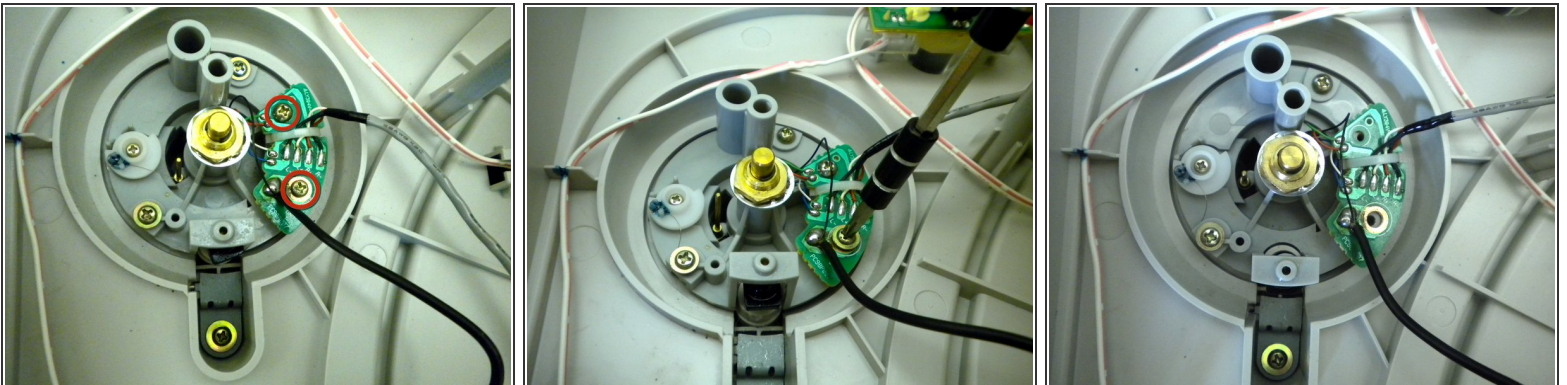
- Remove the screw that connects the black wire of the tone arm to the base of the audio jack housing.

Step 5



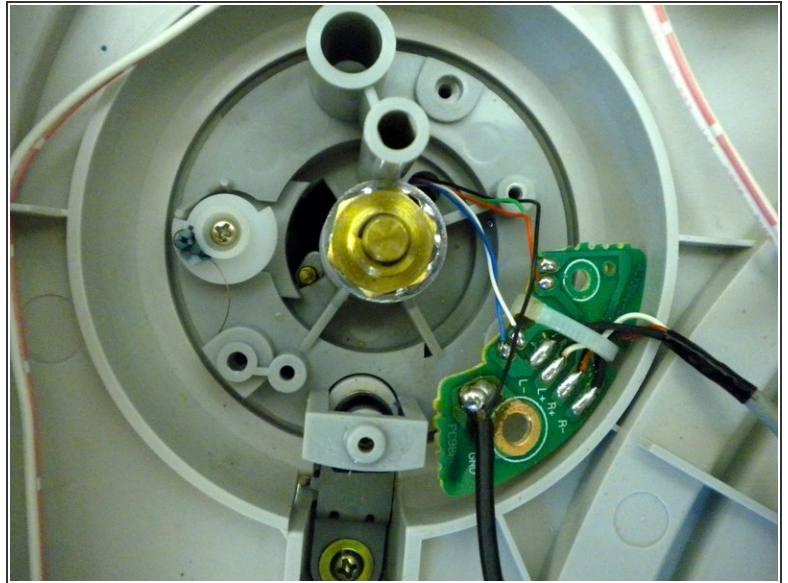
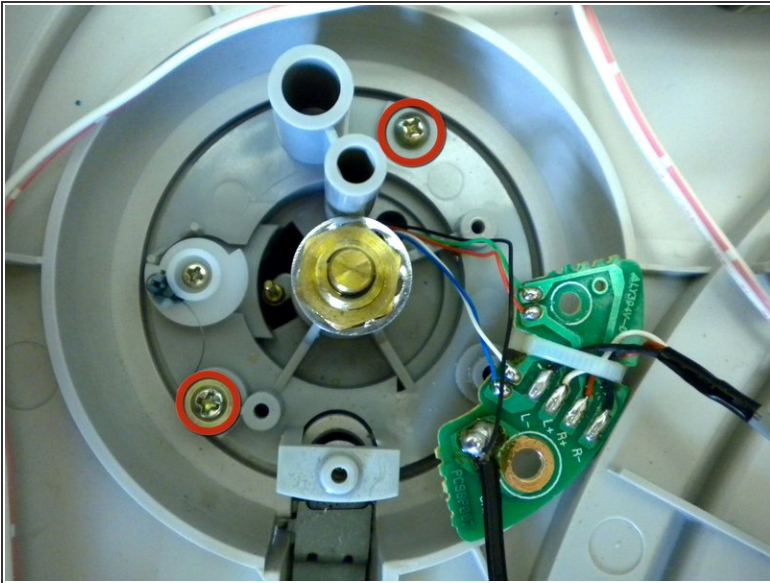
- Gently pull the wire that you just unscrewed to release it from the clip.

Step 6



- Remove the two screws connecting the circuit board to the tone arm.

Step 7



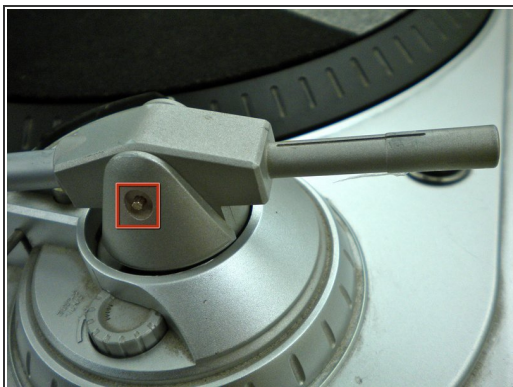
- Remove the two remaining screws connecting the tone arm to the device.

Step 8



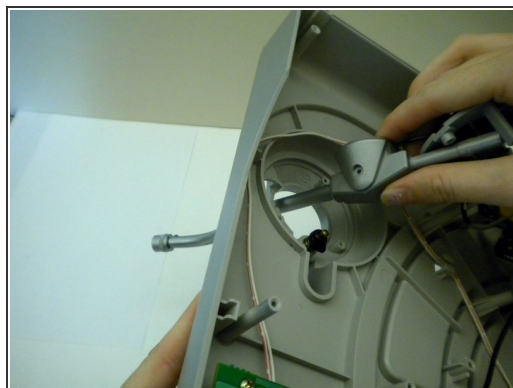
- Flip the turntable back over to the top side.
- Remove the counter weight located at the back of the tone arm.

Step 9



- Push out the pin keeping the tone arm in place using a Phillips #00 screwdriver.
- Once you have pushed the pin out with the screwdriver, pull the rest of it out using your hand.

Step 10



- Pick up the tone arm and point the back end of it towards its base.
- Push the back end of the tone arm into the hole.
- Flip the turntable over and pull the tone arm all the way through the hole.

To reassemble your device, follow these instructions in reverse order.