



# ASUS VG248 Disassembly

How to disassemble the ASUS VG248 monitor.

Written By: Sam Goldheart



---

## INTRODUCTION

Need to access the internals of your ASUS VG248? Here's a guide that shows how to remove the frame and open the display.

---

### TOOLS:

- [Phillips #1 Screwdriver](#) (1)
  - [Metal Spudger](#) (1)
  - [Jimmy](#) (1)
  - [Microfiber Cleaning Cloths](#) (1)
-

## Step 1 — ASUS VG248 Disassembly



- ❗ Before you begin, lay the monitor face down on a smooth, clean surface.
- Four rubbery covers hide four screws in the rear of the monitor.
- Pry out the plastic covers with a stiff pointed tool, like a metal spudger.

## Step 2



- Remove the four 13.4 mm Philips #1 screws securing the monitor stand.




## Step 3



- Remove the stand from the display.

## Step 4



-  The display bezel is held to the rear case by plastic clips that can be released by pulling straight up on the bezel.
-  Rather than use any prying tools that could damage the LCD, it's best to just pull with your fingers. A thin cloth will both protect your fingertips and prevent you from smudging the LCD.
  - Lay the cloth over one of the long edges of the display.
  - Grip the side of the bezel through the cloth and lift straight up. A few clips in the center will pop free.
-  Be careful to pull straight up, and not pry against the display. Pushing down on the display could damage it.

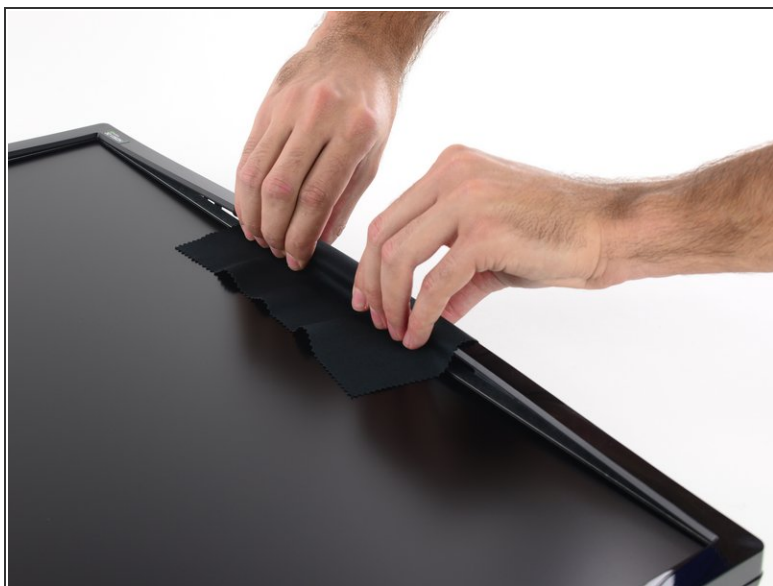


## Step 5



- Repeat the procedure around the display, lifting up the center of the next side.

## Step 6



- Move around to the other long side and lift up on the center of the bezel.

## Step 7



- Grip the center of the final side and lift the bezel away from the rear case.

## Step 8



- Now that you've freed the centers of the four sides, it's time to move on to the corners.
- ⓘ Each corner is secured by two large clips that can't be freed by just pulling straight up like you did with the sides.
- ⓘ In the next step, you'll be pushing in on the corner clip on the left of the bottom edge of the bezel.



## Step 9



- Using a thin stiff prying device, like a [Jimmy](#), press in against the bottom clip in the lower left corner (beneath the HDMI logo).
- While pressing the clip in, pull up on the lower edge of the bezel. The entire corner should pop free.

## Step 10



- Once you've freed one corner, you should be able to gently twist the bezel off, freeing all of the remaining corners.
- If any corners are particularly stubborn, repeat the previous step on the difficult corner.

## Step 11



- Remove the bezel.

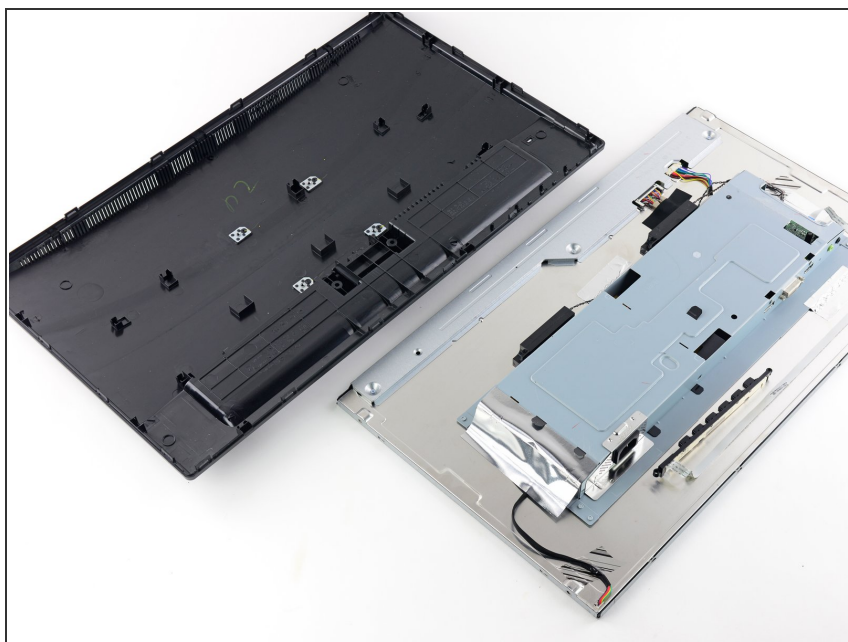
## Step 12



- Lift the LCD out of the rear case.

**i** The row of adjustment buttons will come out of the case with the display, attached by a thin ribbon cable. Take care not to damage the cable.

## Step 13



- With the casing removed, you now have access to the button board, cables, and the housing over the motherboard components.

To reassemble your device, follow these instructions in reverse order.