



# iRobot Roomba 770 Battery Replacement

This guide will show you how to replace the battery.

Written By: Andrew Horvath



## INTRODUCTION

As a safety precaution, it is important that you remove the device's power source, the battery, before working on any other component. This will prevent any damage to the other components as well as any harm to you.



### TOOLS:

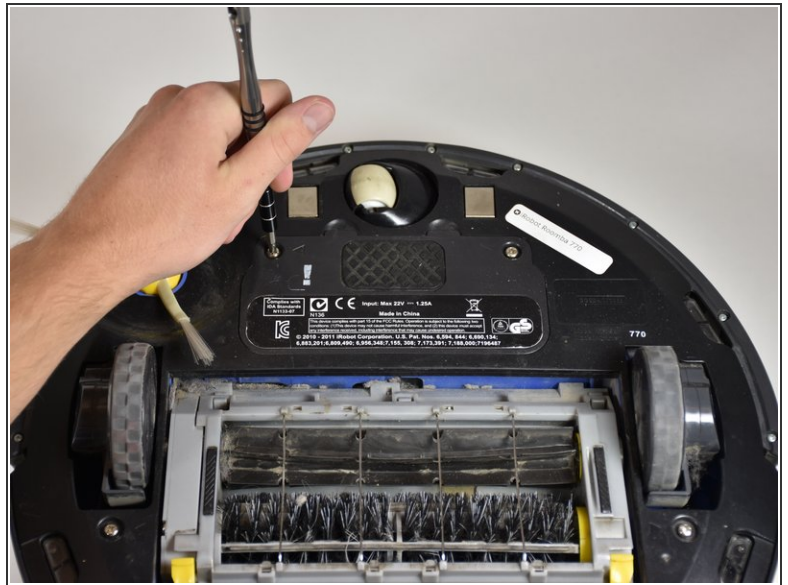
- [J1 Screwdriver Bit](#) (1)
- [JIS Driver Set](#) (1)



### PARTS:

- [iRobot Roomba Replacement Battery for Select 500, 600, and 700 Series](#) (1)

## Step 1 — Battery



- Flip the Roomba over so that the wheels are facing up and the dust tray is closest to you.
- Using the J1 Phillips screwdriver, locate and unscrew the two 11mm phillips screws above the brushes on the battery panel.
- Remove the plastic plate from the battery box.

## Step 2



- Locate the 2 green tabs on the left and right of the big yellow battery.
- Grab the tabs with your hands and lift straight upward.

To reassemble your device, follow these instructions in reverse order.