



# HP ProBook 4520s Hard Drive Replacement

This guide will lead you through the steps to remove and replace the HP ProBook 4520s hard drive.

Written By: May Lin



## INTRODUCTION

If your HP ProBook 4520s shuts down without warning, you may have a hard drive error and need to replace the hard drive.



### TOOLS:

- [Phillips #1 Screwdriver](#) (1)
- [Spudger](#) (1)
- [Metal Spudger](#) (1)



### PARTS:

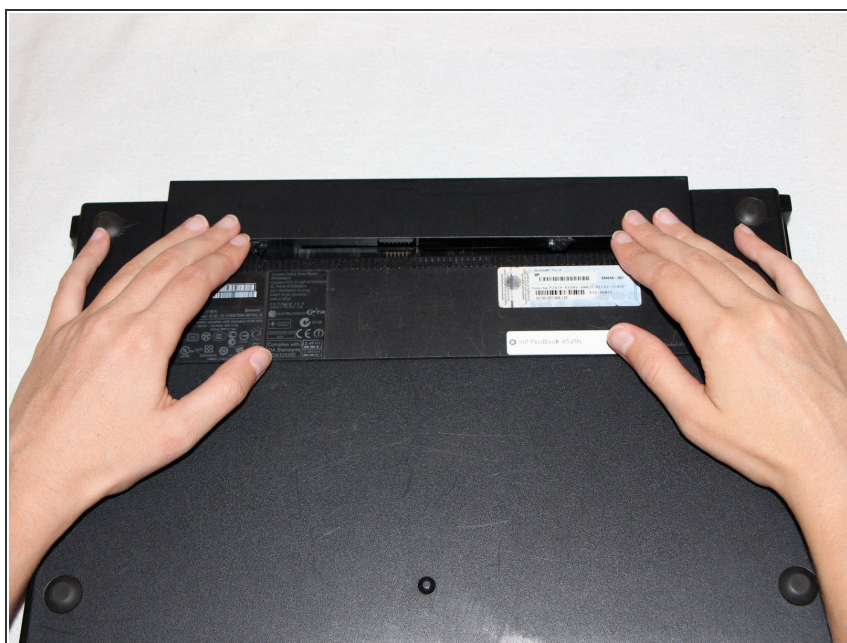
- [1 TB SSD / Upgrade Bundle](#) (1)
- [250 GB SSD / Upgrade Bundle](#) (1)
- [500 GB SSD / Upgrade Bundle](#) (1)
- [2 TB SSD](#) (1)

## Step 1 — Battery



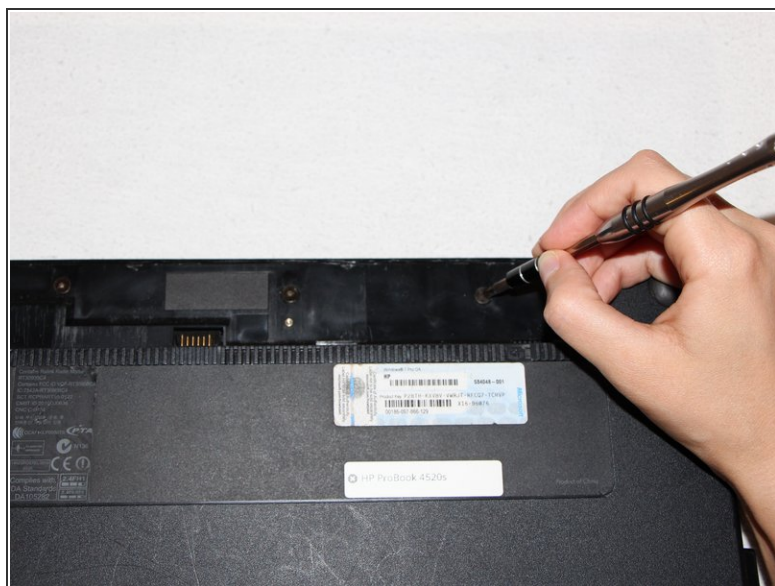
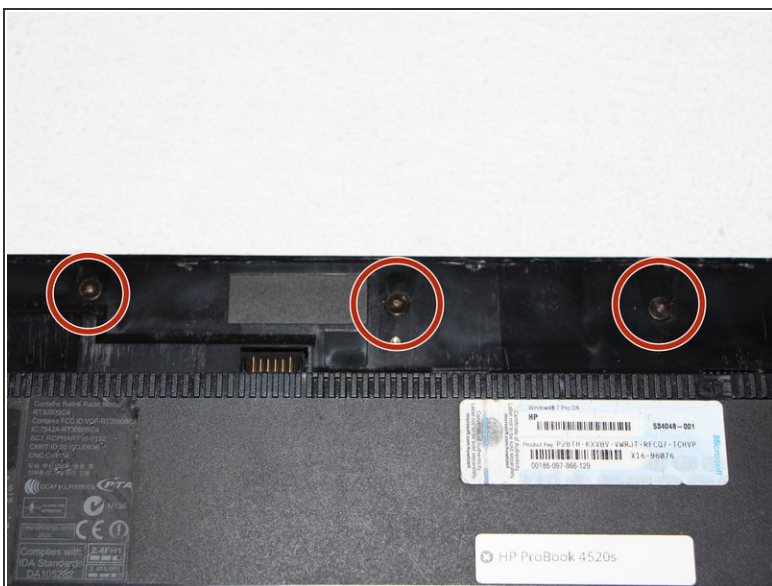
- Flip the 4520s upside-down with the front toward you.
- Push the two latches below the battery inwards at the same time.

## Step 2



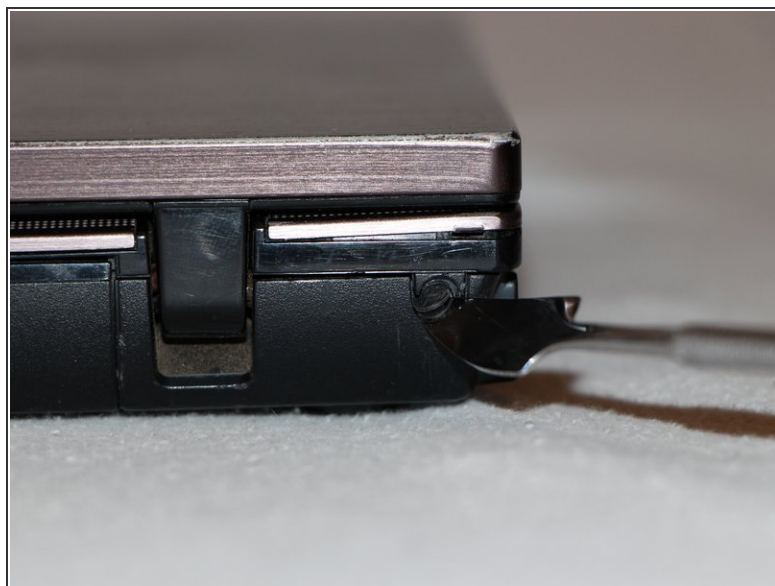
- Remove the battery by holding the latches and sliding the battery away from you.

### Step 3 — Switch Cover



- Use a Phillips #1 screwdriver to remove three 2mm screws where the battery was located.

### Step 4



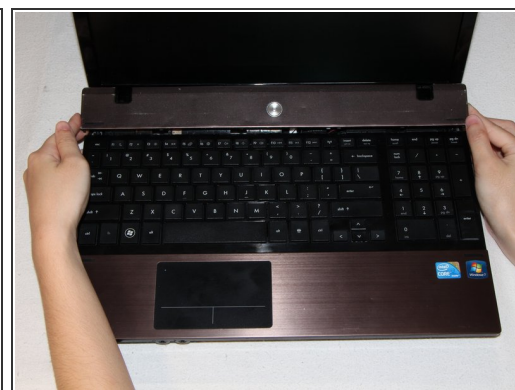
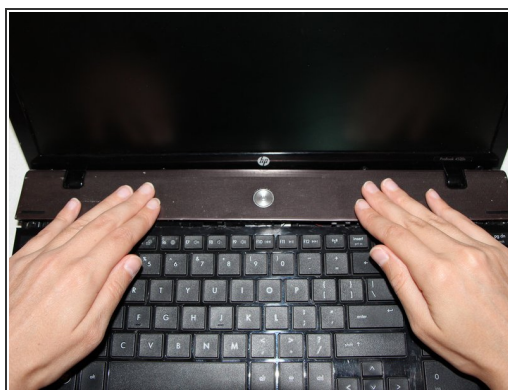
- Flip the 4520s over and rotate it so the back is facing you.
- Use a metal spudger to peel off two rubber caps located on either side of the battery port.

## Step 5



- Use a Phillips #1 screwdriver to remove the 3mm screws behind the caps.

## Step 6



- Rotate the 4520s and then open it with the screen facing you.
- The switch cover is located above the keyboard. Push the switch cover away from you until it comes loose from the 4520s.
- Lift the switch cover away from the 4520s and set it aside.

## Step 7 — Keyboard



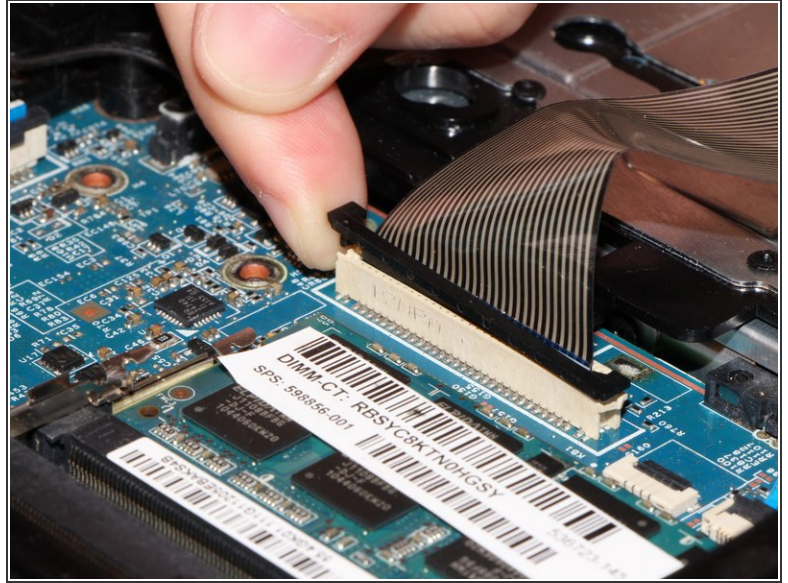
- Use a Phillips #1 screwdriver to remove the two 7mm screws located on either side of the keyboard panel.

## Step 8



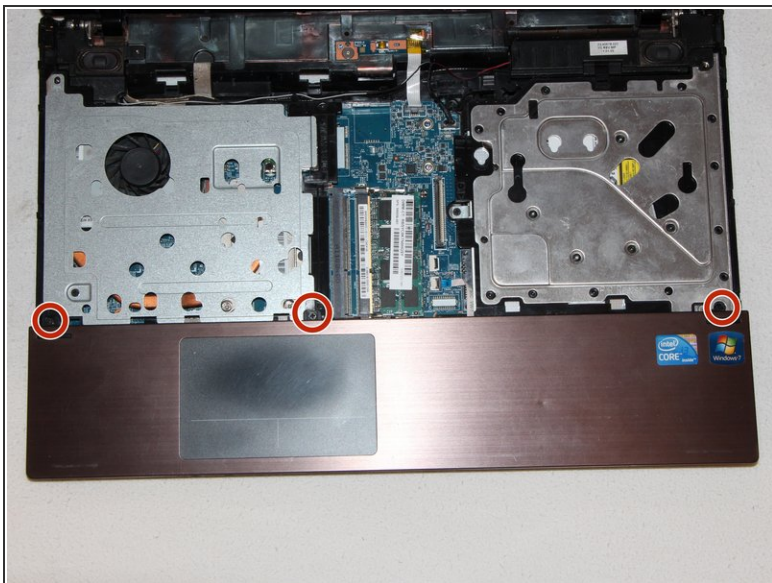
- Slide the keyboard panel away from you to free it from the 4520s.
- ⚠ Do not yank the keyboard panel away from the 4520s. This may damage the cable.

## Step 9



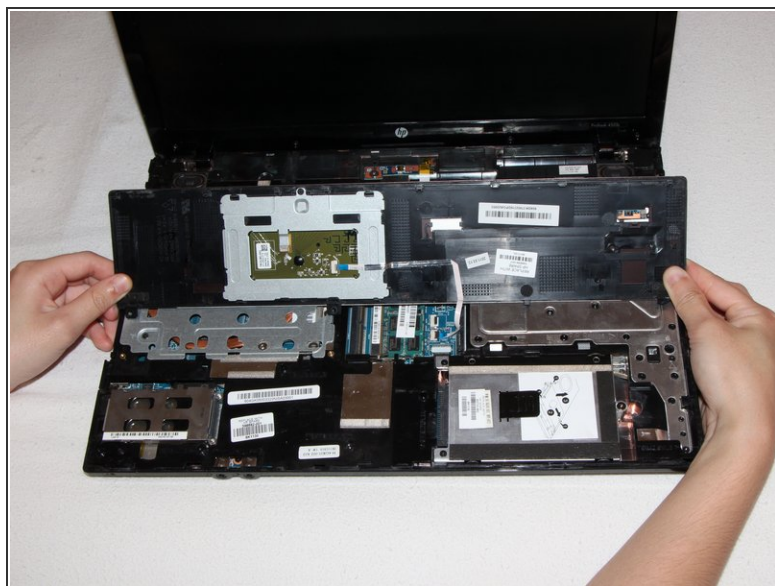
- Gently raise up the keyboard and flip it over to reveal a ribbon cable.
  - Release the ribbon cable by carefully lifting the black tab upwards, one side at a time.
  - Remove the cable and lift the keyboard panel up. Set it aside.
- ☒ When reassembling, feed the ribbon cable into the port. Press down on the tab to pinch the cable in place.

## Step 10 — Palm Rest



- Use a Phillips #1 screwdriver to remove the three 3mm screws along the top of the palm rest.

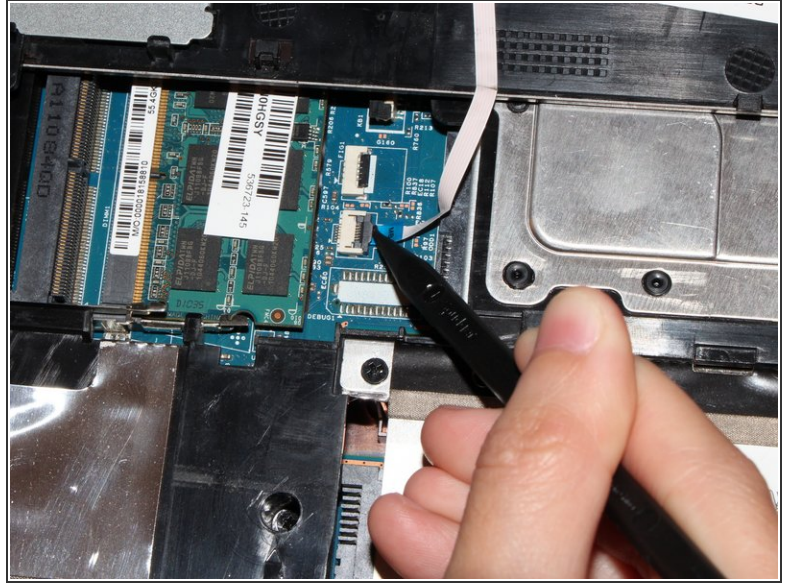
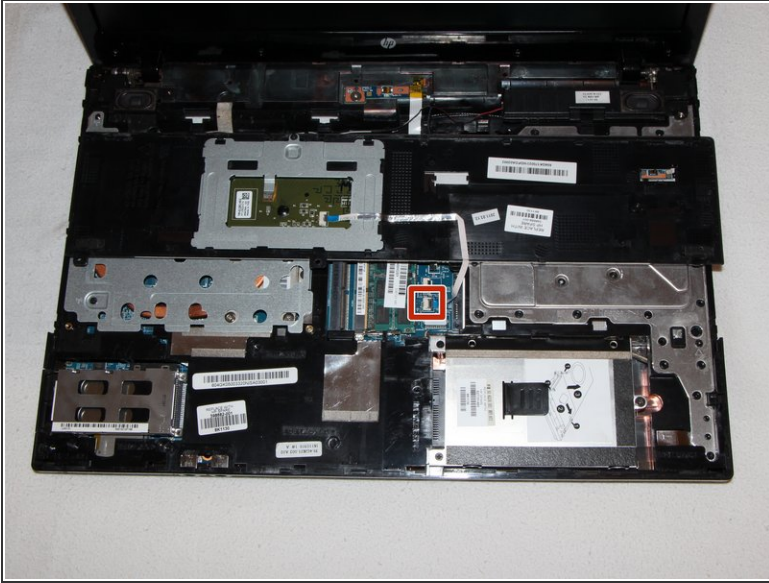
## Step 11



- Slide the palm rest to the right to release it and then rotate it back gently.

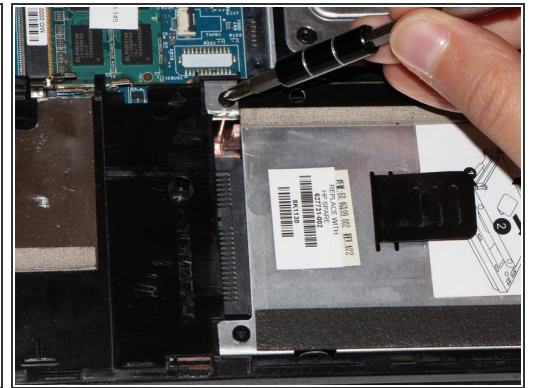
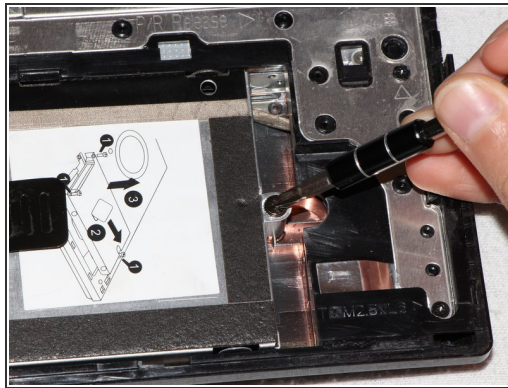
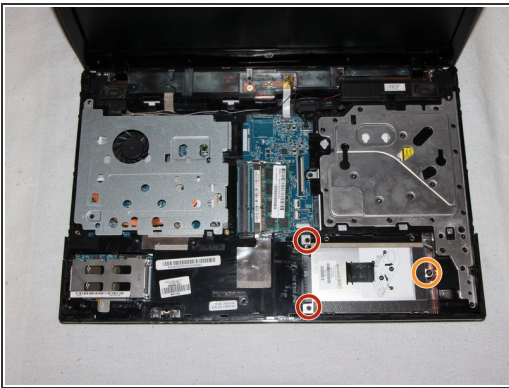
⚠ Do not yank the palm rest away from the 4520s. This may damage the cable.

## Step 12



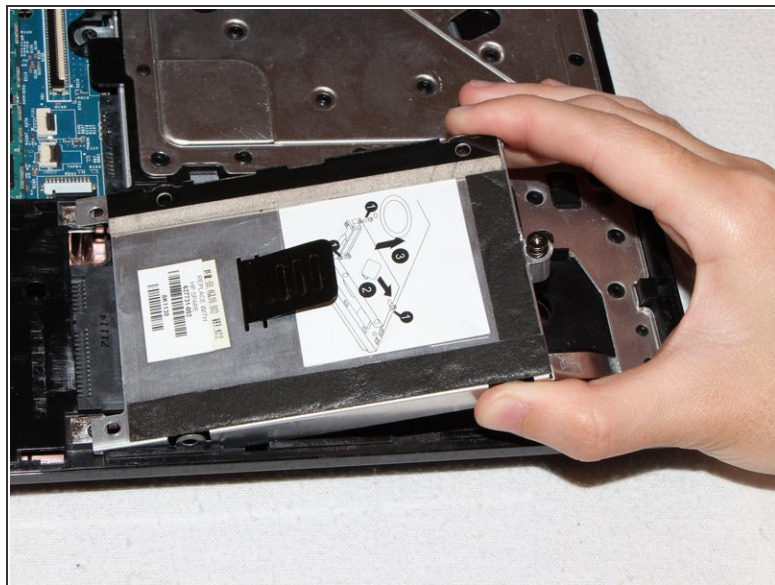
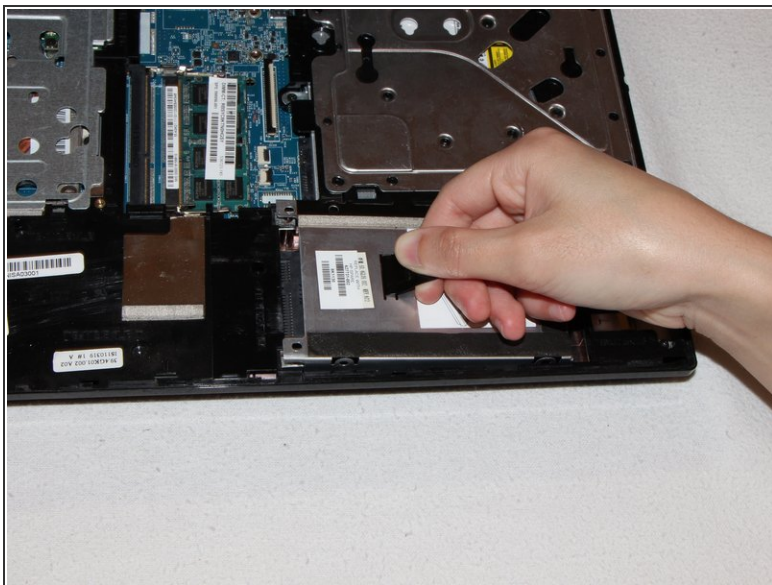
- Release the ribbon cable by opening the black hinge on the port using a spudger.
- Remove the cable and set the palm rest aside.

## Step 13 — Hard Drive



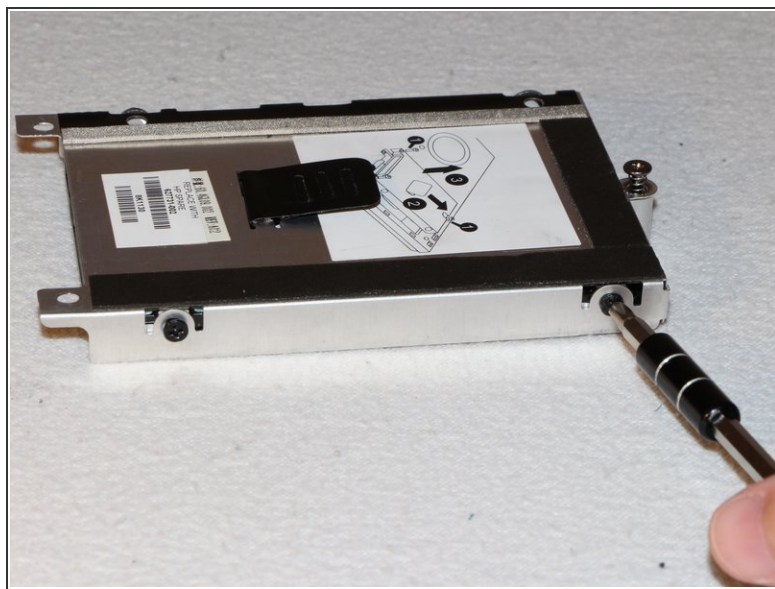
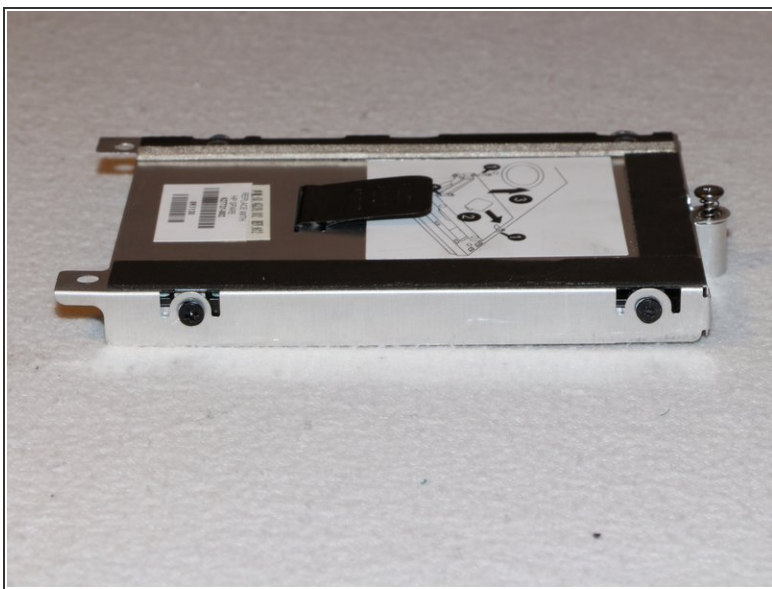
- The hard drive is contained in the housing on the lower right.
- Remove two 5mm screws on the left using a Phillips #1 screwdriver.
- Fully loosen the captive screw on the right using a Phillips #1 screwdriver.

## Step 14



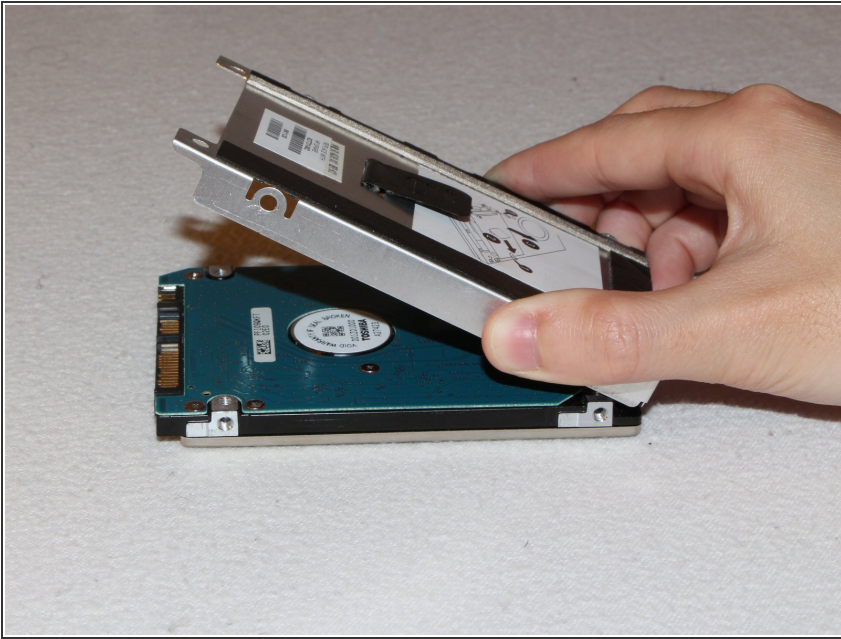
- Disconnect the hard drive by pulling the tab to the right.
- Lift the housing out from the 4520s.

## Step 15



- Use a Phillips #1 screwdriver to remove the four 3mm screws on the sides of the housing.

## Step 16



- Lift the housing away from the hard drive.
- ⓘ The hard drive is 2.5".

To reassemble your device, follow these instructions in reverse order.