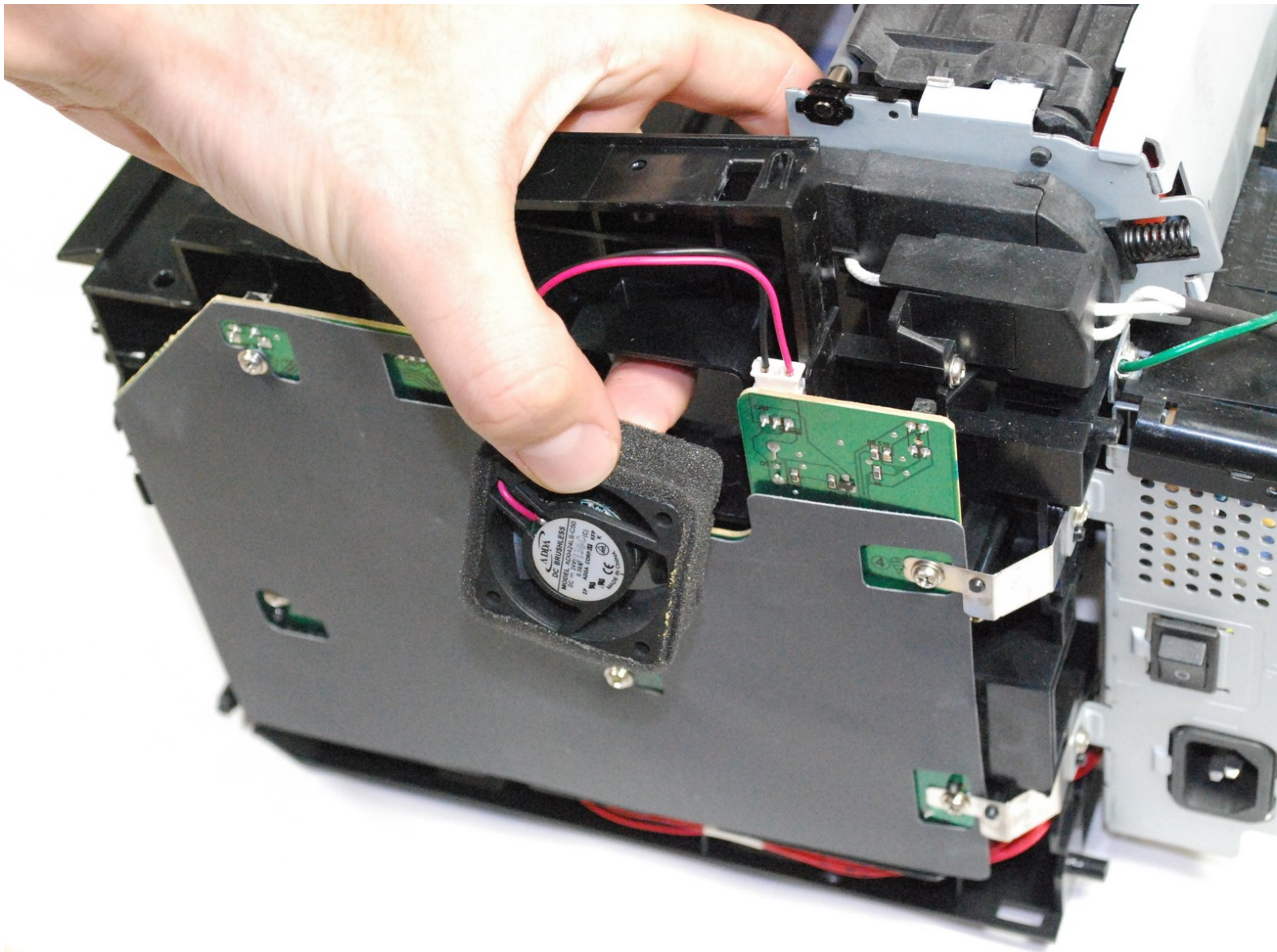




Samsung ML2510 Side Cooling Fan Replacement

This guide will teach you how to replace the side cooling fan on the Samsung ML2510

Written By: bbaustin



INTRODUCTION

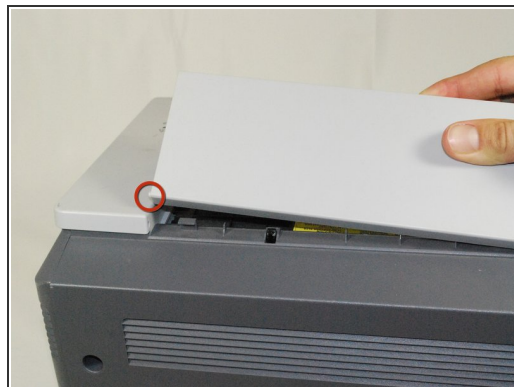
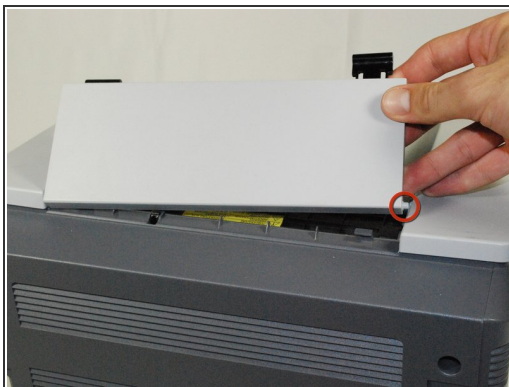
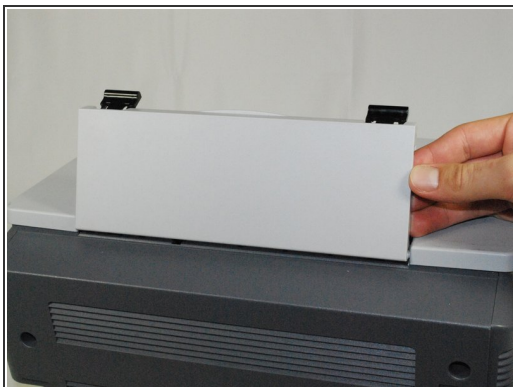
This guide will require you to disassemble the back and side panel of the printer. You will need to refer to the [Removing Samsung ML2510 Back Panel](#) guide in order to complete the task.



TOOLS:

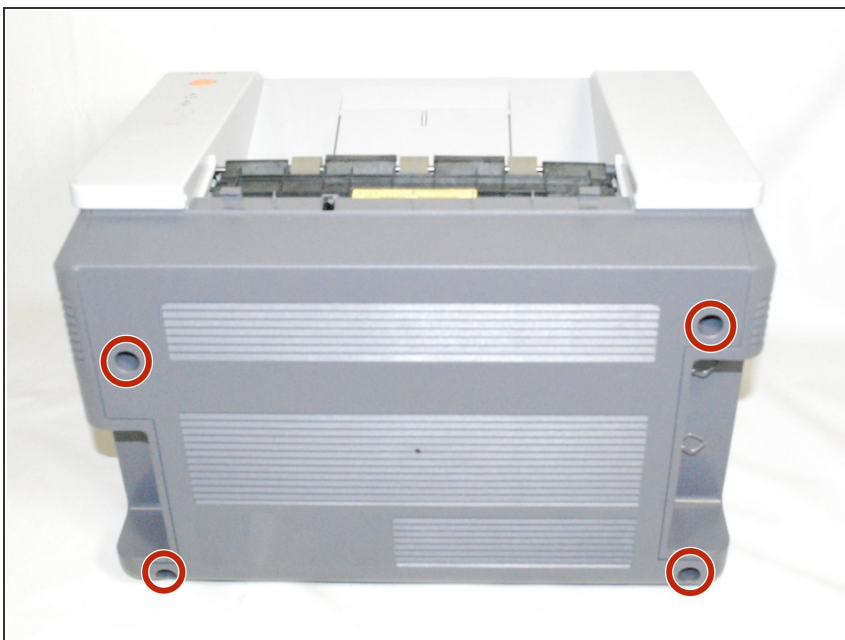
- [Phillips #2 Screwdriver](#) (1)
 - [iFixit Opening Tools](#) (1)
-

Step 1 — Removing Samsung ML2510 Back Panel



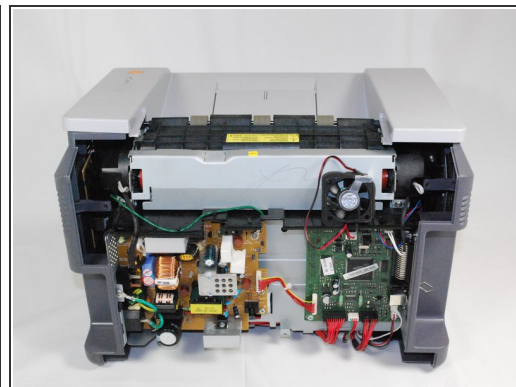
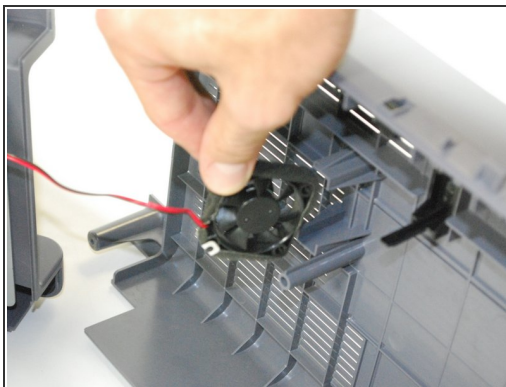
- Remove the top hinged panel by taking out the pins at the bottom of this panel.

Step 2



- Using a Phillips #2 screwdriver, remove the four screws on the back of the printer.

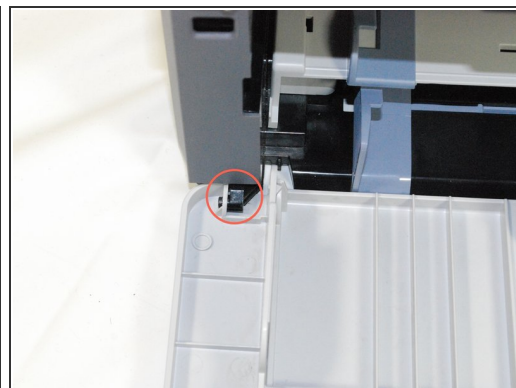
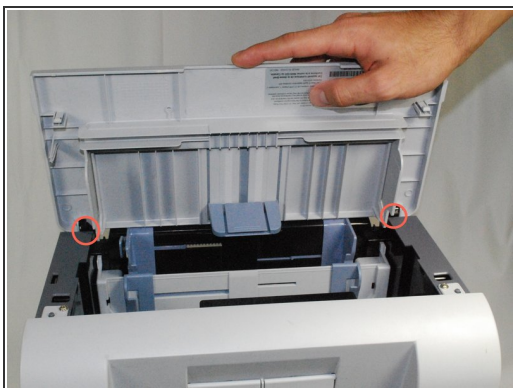
Step 3



- Gently lift the top panel while simultaneously pulling off the back panel.

⚠ Before pulling out the back panel entirely, make sure to remove the rear cooling fan from its slot.

Step 4 — Side Cooling Fan



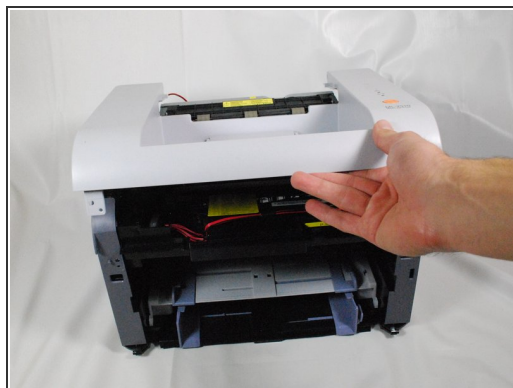
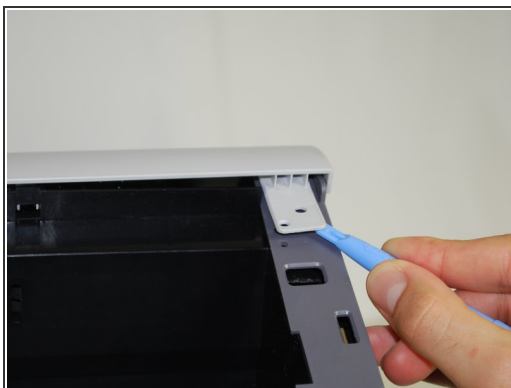
- Locate the holes on the panel that are attached to the main body.
- Remove the front panel by gently moving the holes from the pegs one by one.

Step 5



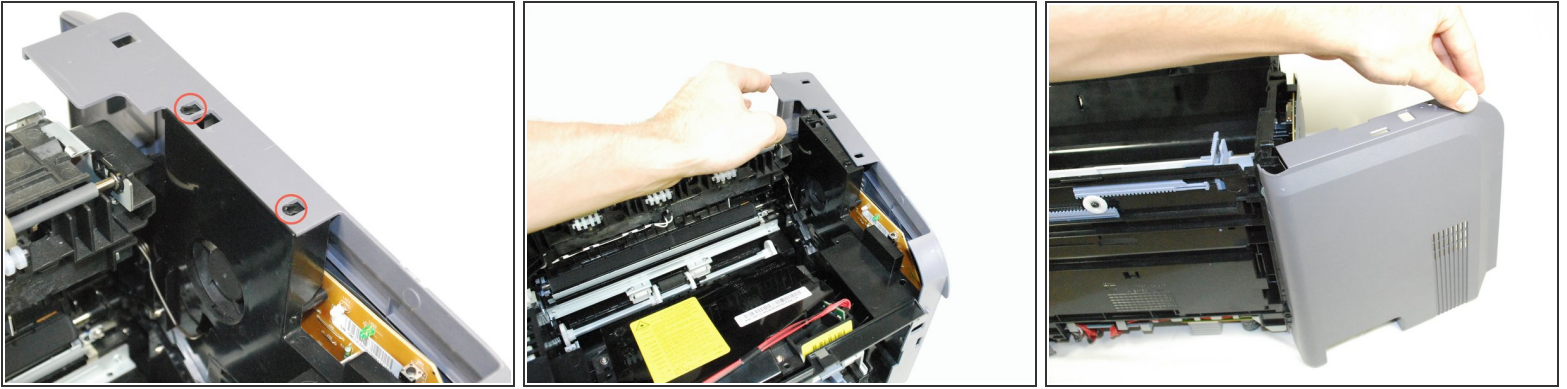
- Using a Phillips #2 screwdriver, remove the two 1" screws on the front face of the printer.

Step 6



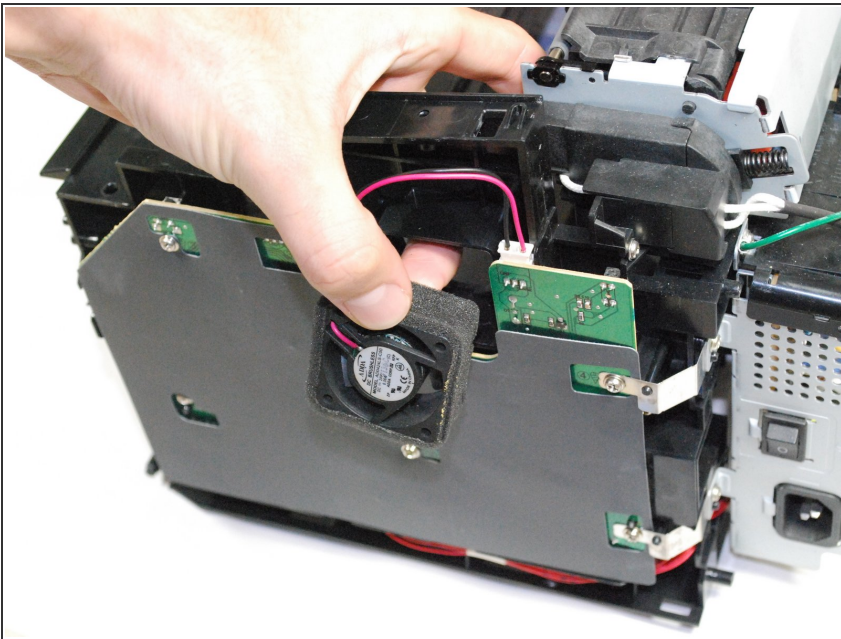
- Using a plastic opening tool, gently lift one side of the top panel from its peg.
- Repeat process for the other side.
- Lift the top panel from the front to remove it entirely.

Step 7



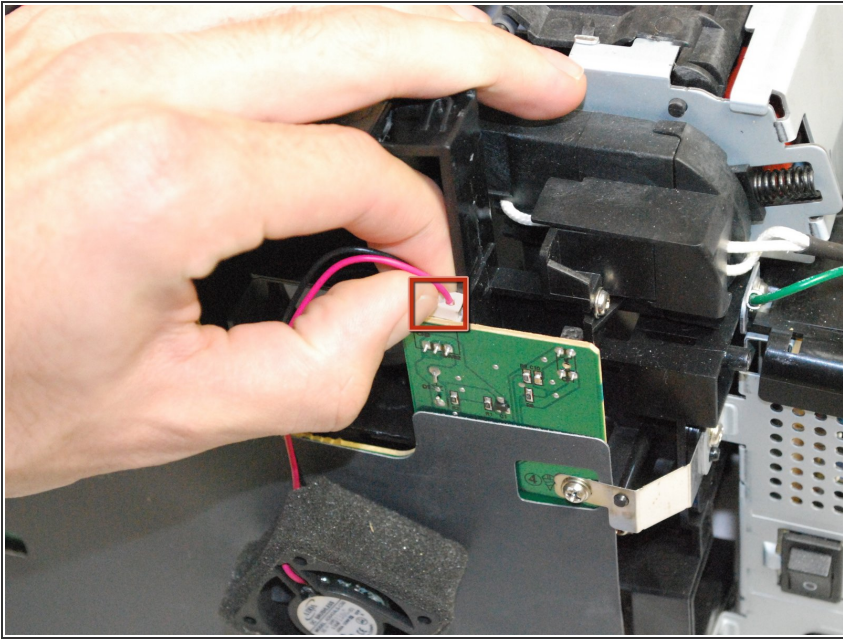
- Lift the right side-panel up from the raised stops.
- Gently rotate the panel as indicated in the picture to remove the panel entirely.

Step 8



- Poke out the side fan from the inside of the printer.

Step 9



- Unplug the fan's wires from the side circuit board.
- Replace the fan and reassemble the printer using reverse procedures.

To reassemble your device, follow these instructions in reverse order.