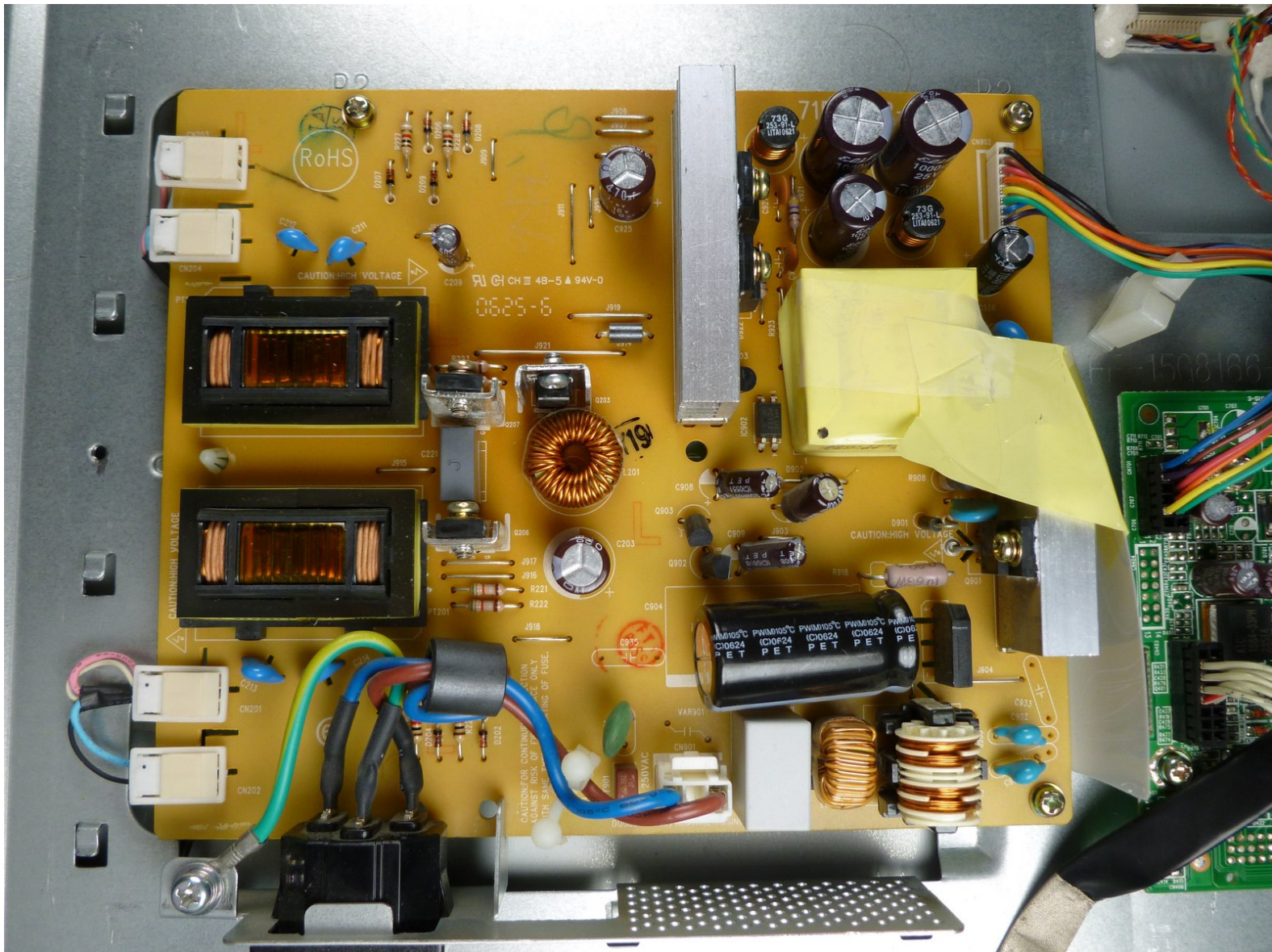




Acer AL1916 Power Supply Board Replacement

This guide will show the steps required to remove the back cover of the monitor, take out the malfunctioning power supply board, and install a new power supply board.

Written By: Keith



This document was generated on 2020-11-20 09:19:30 PM (MST).

INTRODUCTION

Replacing a bad power supply board will ensure that your monitor gets power.



TOOLS:

- [Large Needle Nose Pliers](#) (1)
- [Phillips #2 Screwdriver](#) (1)
- [iFixit Opening Tools](#) (1)



PARTS:

- [Acer AL1916 Power Supply](#) (1)

Step 1 — Stand



- ⓘ Lay the monitor on a flat surface so that the back is facing up.

Step 2



- Grab the hinge cover with both hands on either side of the stand.
- Squeeze inwards with your thumbs and fingers and lift up to remove the hinge cover.

Step 3



- Remove the four 12.1 mm Phillips #2 screws that hold the stand to the monitor.
- ⚠ Support the monitor while removing the screws to prevent the monitor from falling.
- Lift up to detach the stand.


Step 4 — Outer Case



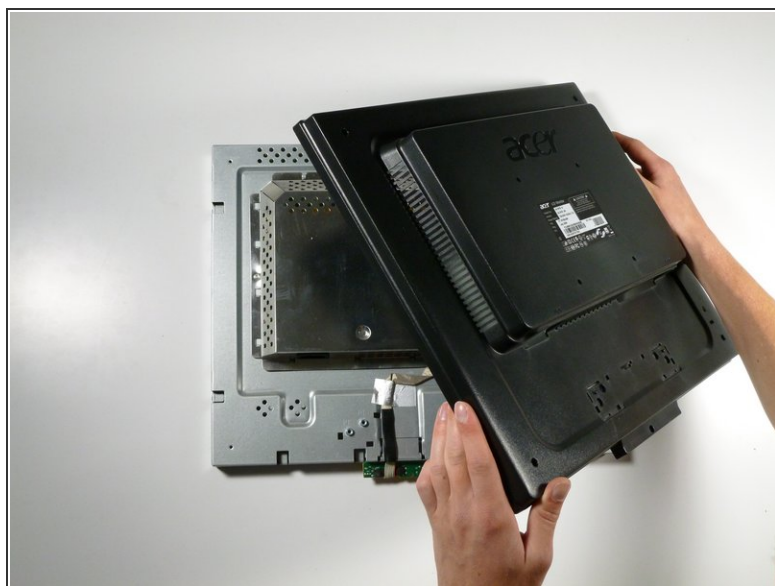
- Remove the five 9.5 mm Phillips #2 screws located around the perimeter of the monitor.

Step 5



- Starting at the corner of the monitor, wedge the small plastic opening tool between the back cover and the display bezel.
 - Tilt the plastic opening tool up to separate the back cover from the display bezel.
 - Continue around the perimeter of the monitor until the display bezel comes off.
-  A reasonable amount of force is necessary to detach the back cover from the display bezel.

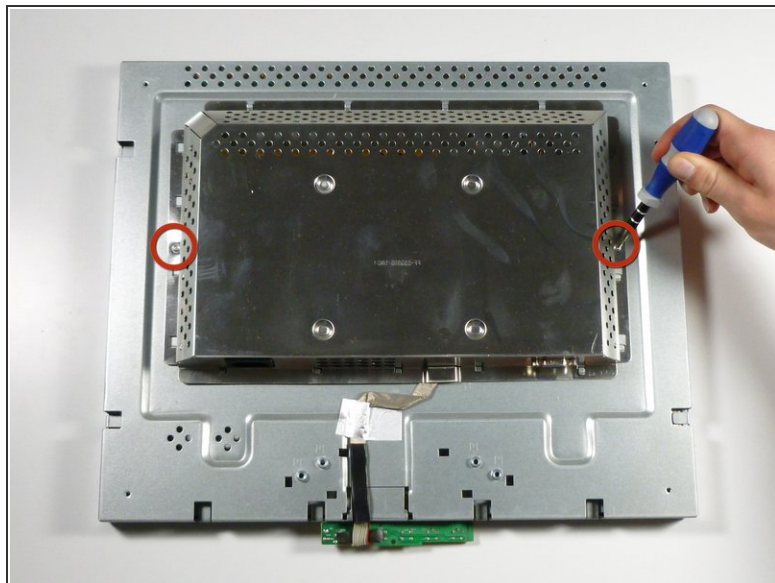
Step 6



i Reposition the monitor so that the back is facing up.

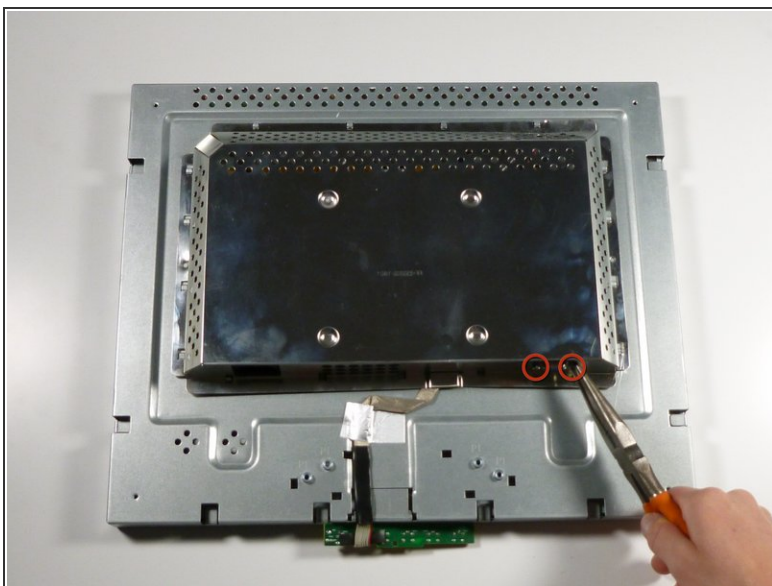
- Grab the corners of the monitor and jiggle them upwards to detach the back cover from the inside of the monitor.
- Lift the back cover up.

Step 7 — EMI Shield



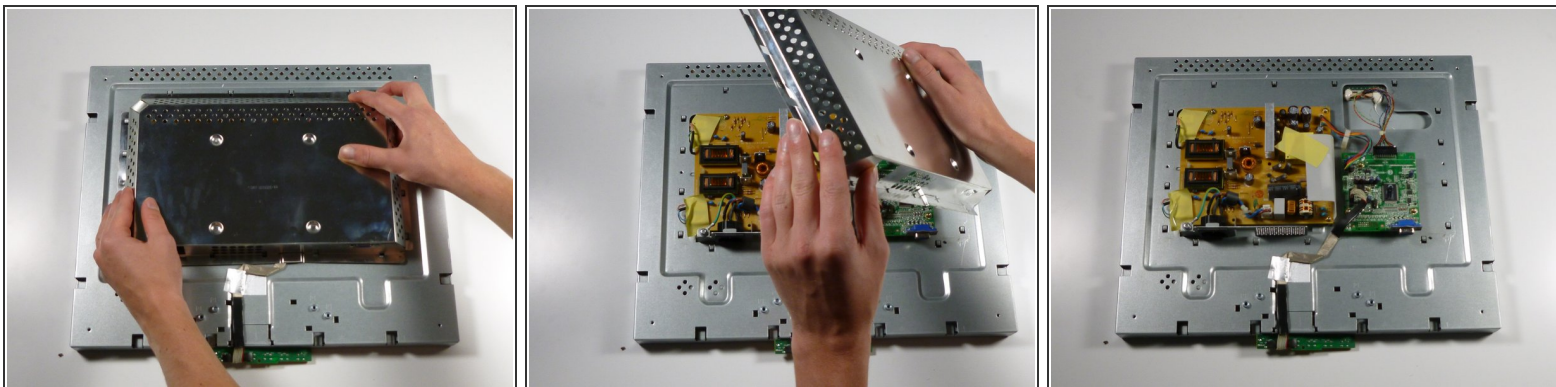
- Remove the two 5.7 mm Phillips #2 screws located on either side of the EMI shield.

Step 8



- Using a nut driver (or if necessary, needle-nose pliers), remove the two nuts on either side of the VGA input.

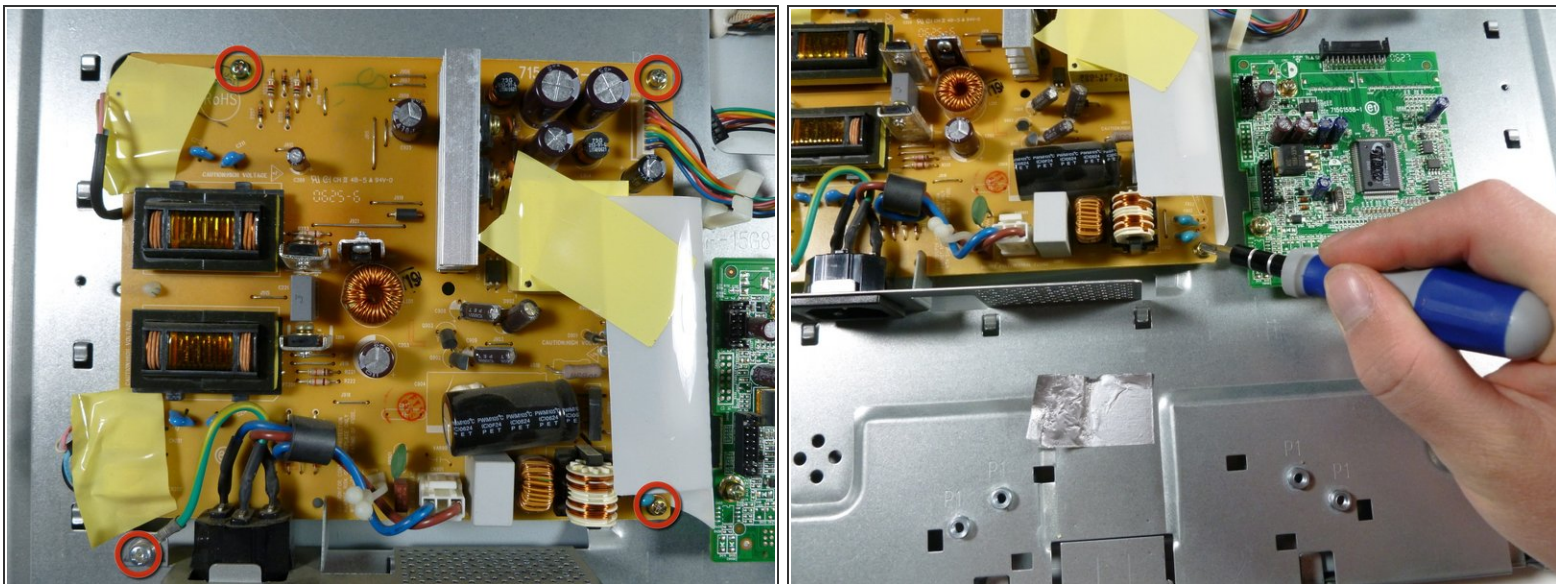
Step 9



- Grab the metal casing by the sides and slide it down towards the bottom of the monitor.
- Lift up to remove the metal casing.

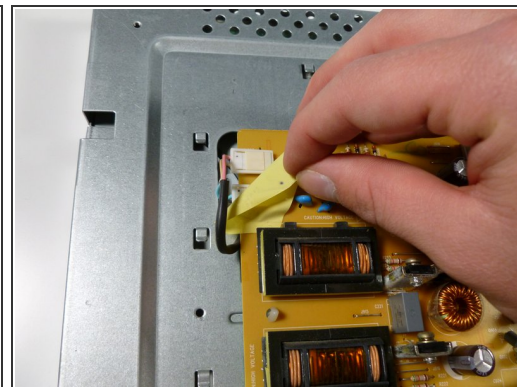
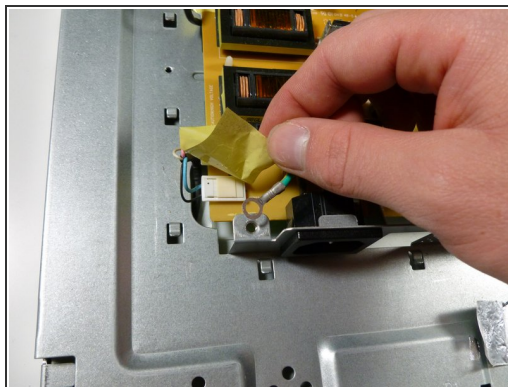
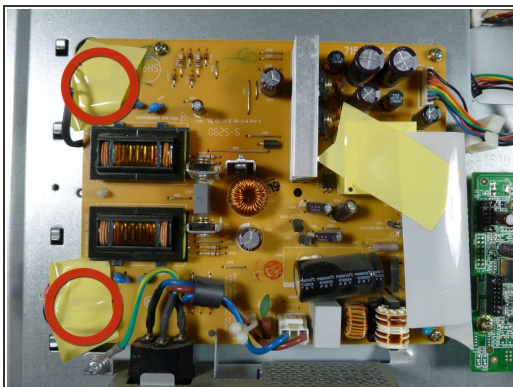
⚠ Beware, metal casing is sharp!

Step 10 — Power Supply Board



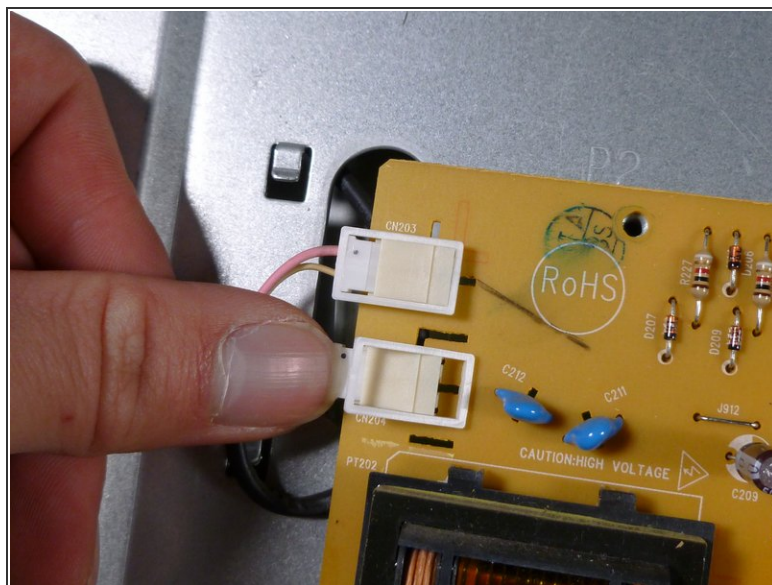
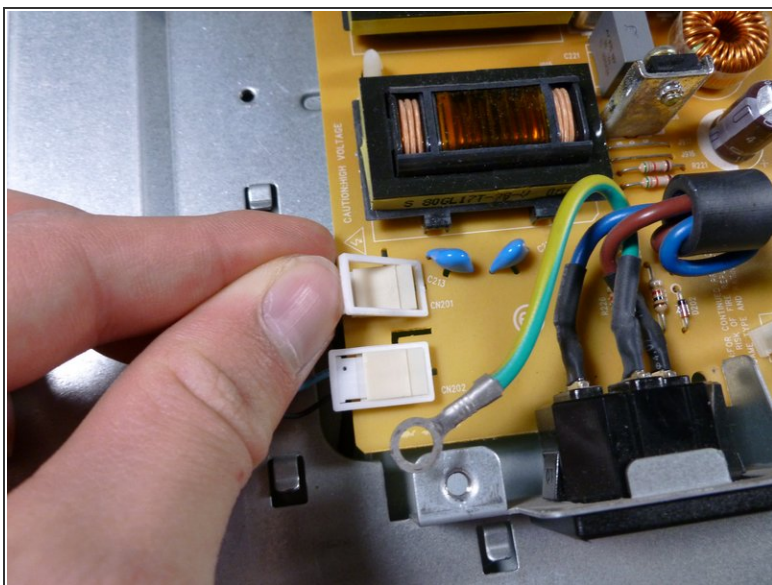
- Remove the three 7.5 mm Phillips #2 screws and one silver 8.3 mm Phillips #2 screw from the power supply.

Step 11



- Remove the two pieces of yellow tape on the left side of the power supply.

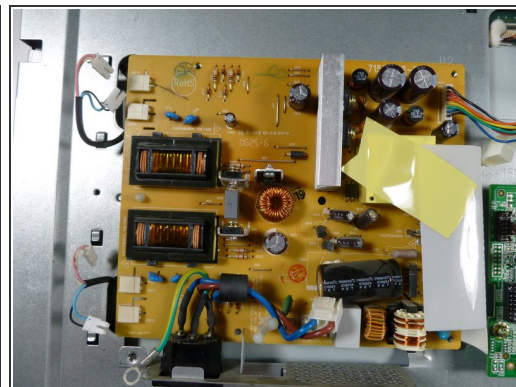
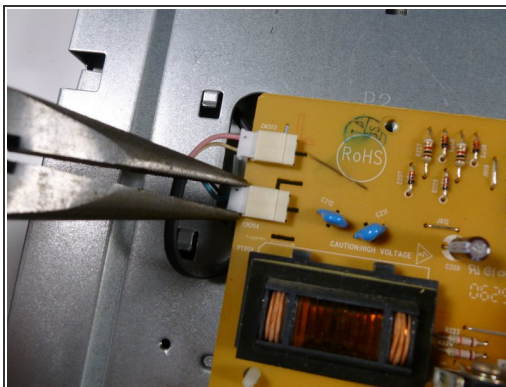
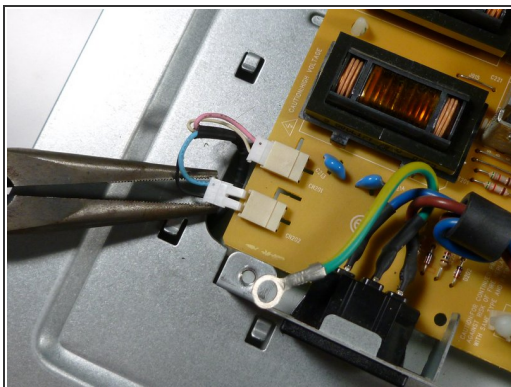
Step 12



- Remove the four little white clips located underneath the tape by lifting up on their left side.

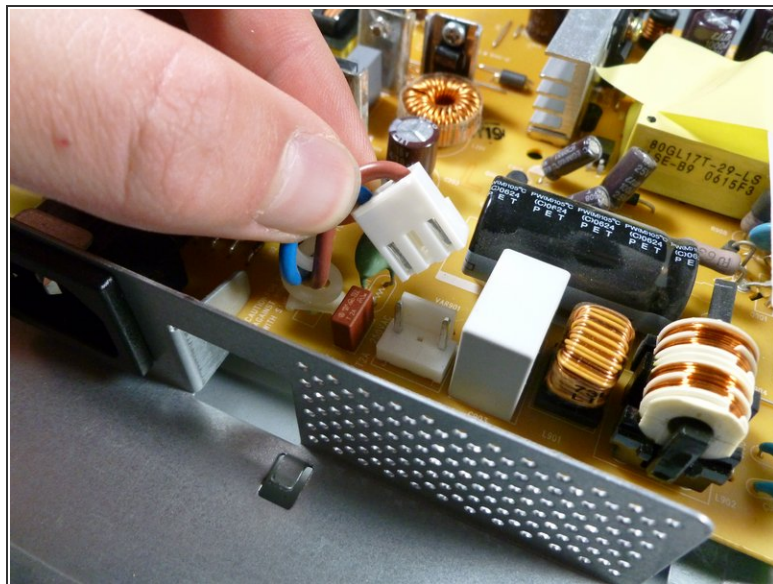
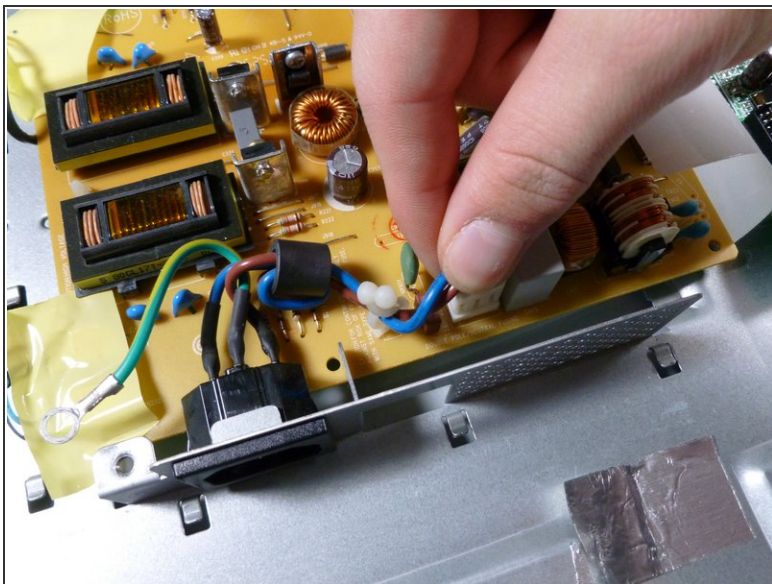
i It would be a good idea to take a picture of the way these connect before removing them.

Step 13



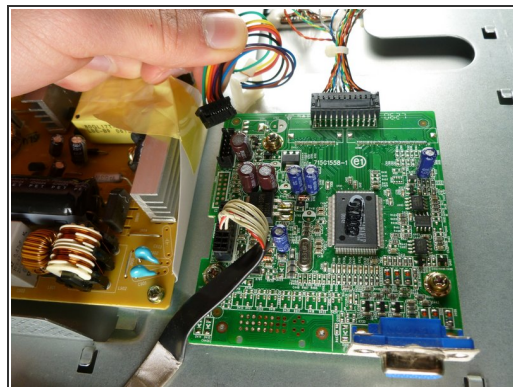
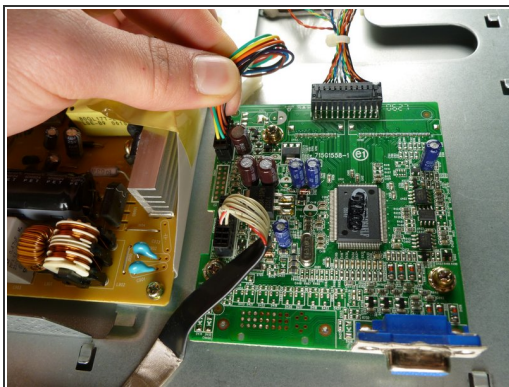
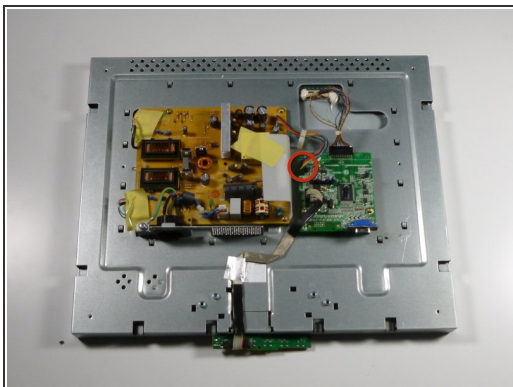
- With the needle-nose pliers, remove the four display connectors by pulling them away from the power supply.

Step 14



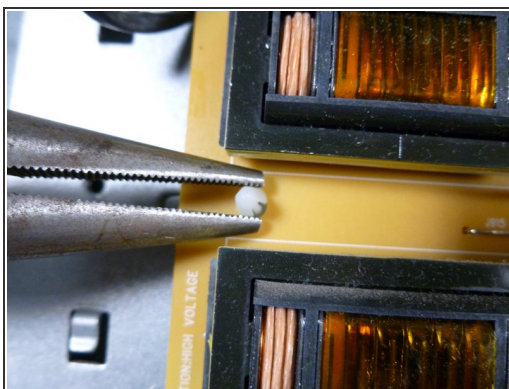
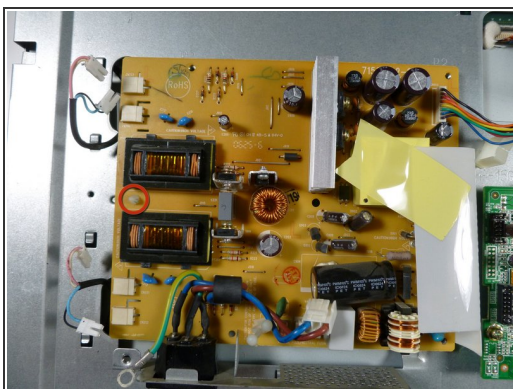
- Pull up and remove the white plug that connects the blue and brown wires to the power supply.

Step 15



- Remove the rainbow-colored power cable by pulling it straight up.

Step 16



- Using the needle nose pliers, pinch the white clip so that it can fit through the hole in the power supply.
- Lift up the power supply and remove it from the rest of the monitor.

To reassemble your device, follow these instructions in reverse order.