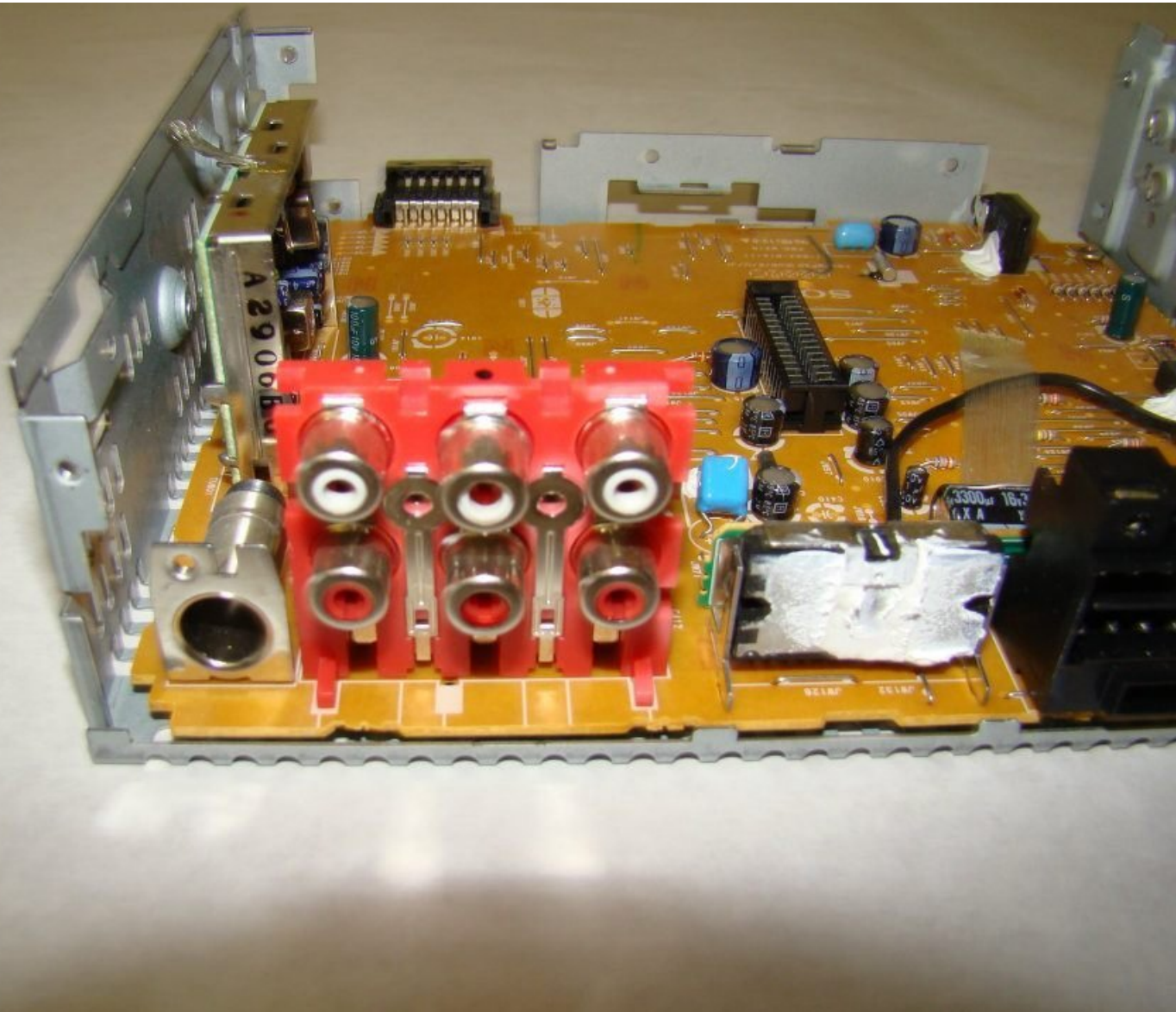




Sony Xplod CDX-MP30 Audio In/Audio Out Inputs Replacement

Replace the Audio In/Audio out inputs in the device.

Written By: Chao Chen



INTRODUCTION

Make sure you can explore the Xplod very well.



TOOLS:

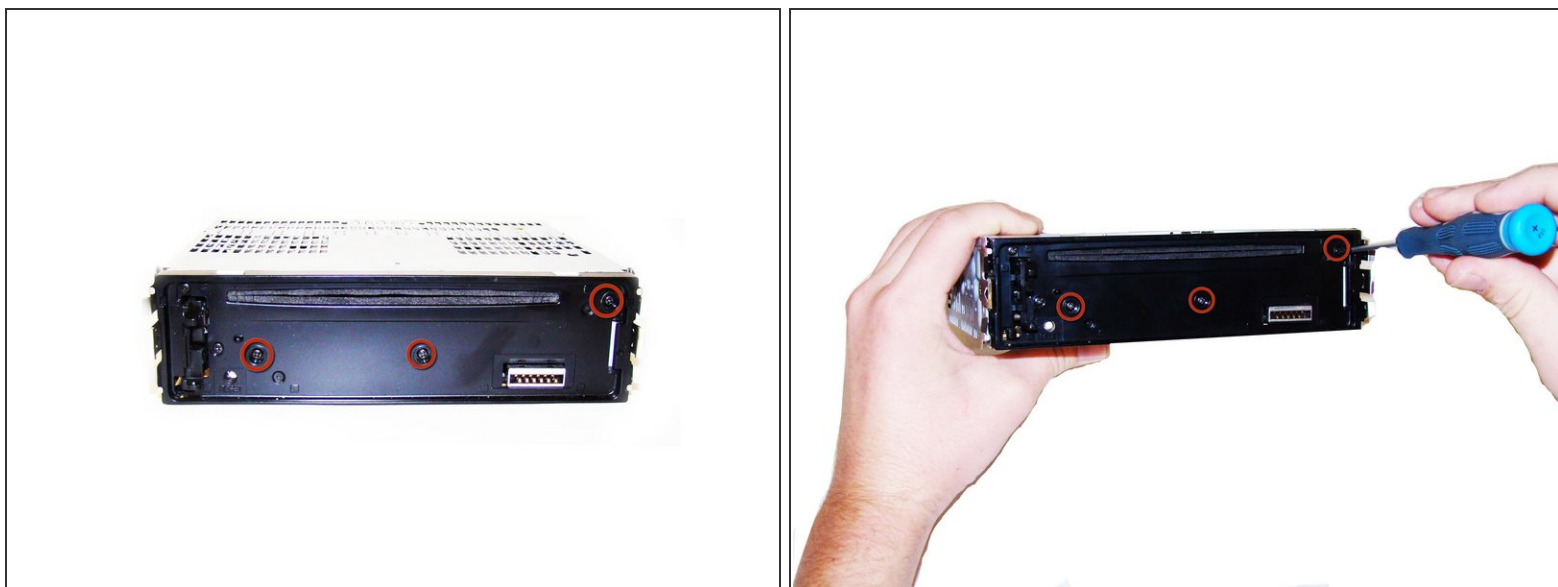
- [Heavy-Duty Spudger](#) (1)
 - [Phillips #0 Screwdriver](#) (1)
 - [Phillips #1 Screwdriver](#) (1)
-

Step 1 — Front Panel



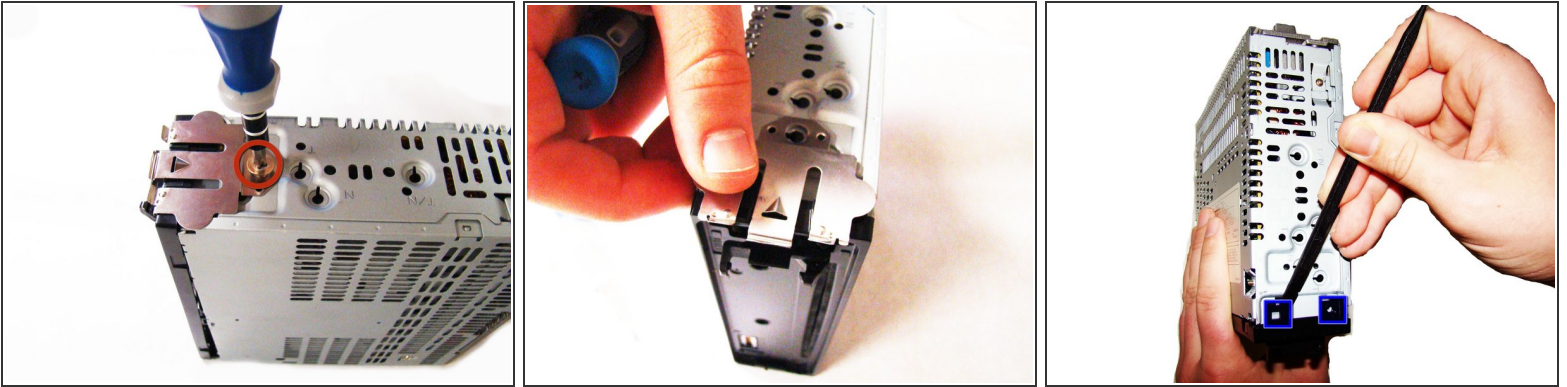
- Press down the release button on the bottom left corner of the face plate.
- Then remove the face plate carefully.

Step 2 — Main Panels



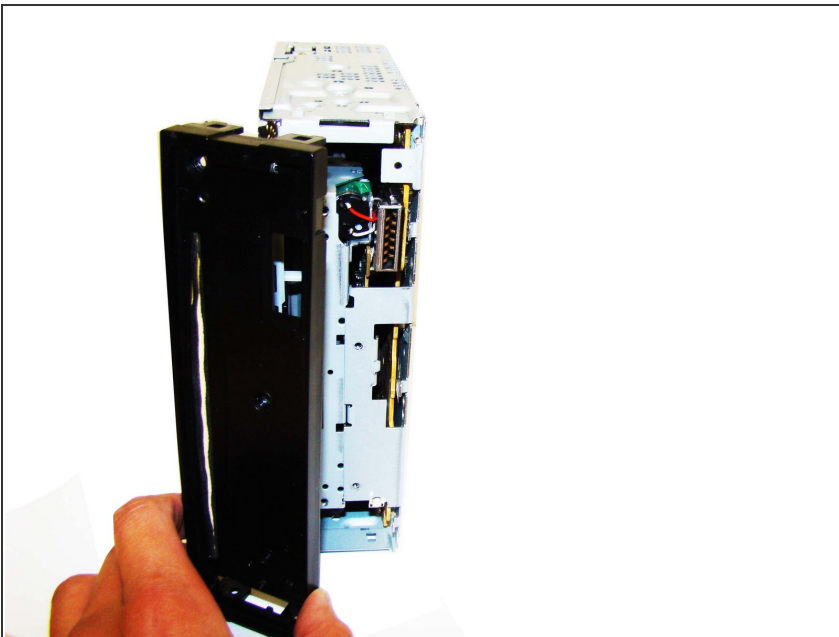
- Using the [Phillips #0 Screwdriver](#), unscrew the 3 screws (length - 7.5mm) on the front of the device.

Step 3



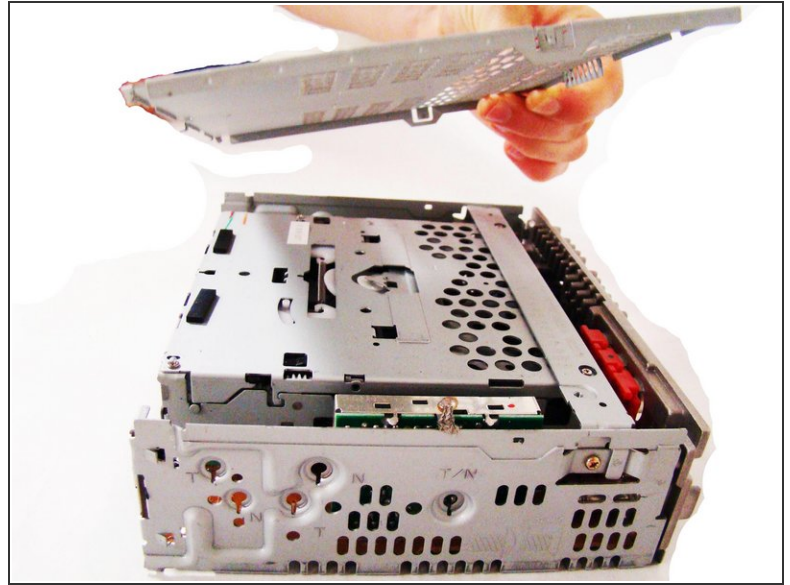
- Using the [Phillips #1 Screwdriver](#), unscrew the 2 thick screws (length - 7.69mm) located on both sides of the stereo.
- Remove side-metal plates gently.
- Use the [Heavy-duty Spudger](#), insert the flat end under each of the black flaps indicated in the picture. Use leverage to pry and pop them loose.

Step 4



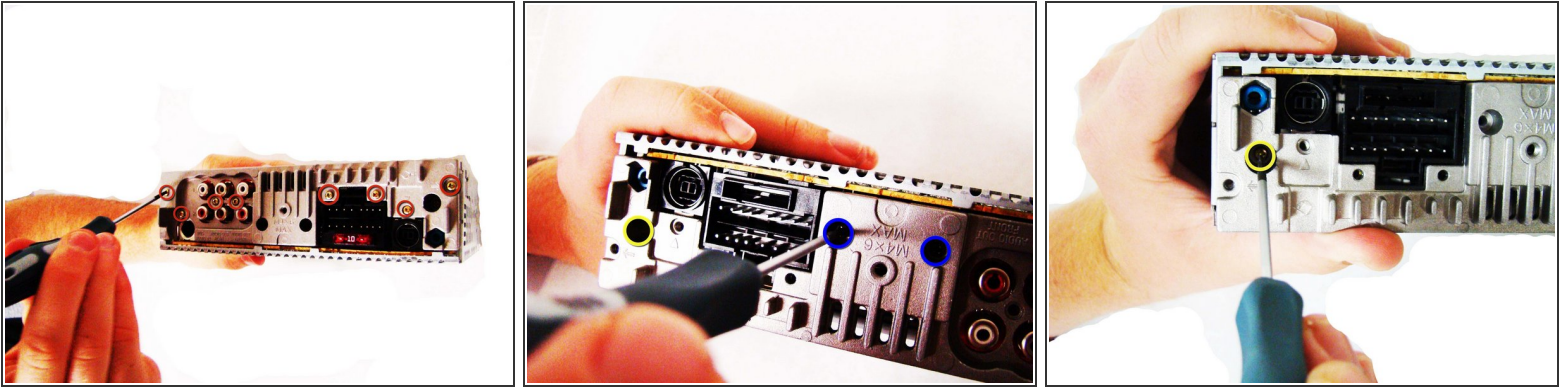
- Remove the black front plate of the stereo.

Step 5



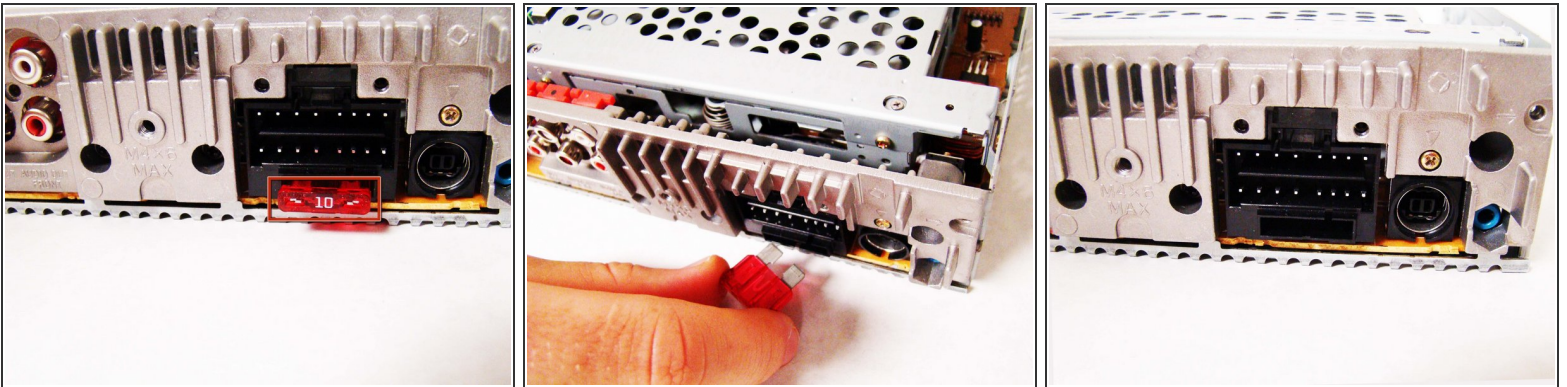
- Using the [Phillips #0 Screwdriver](#), unscrew the 1 gold screw (height - 7.47mm) on the top of the stereo.
- Lift off the top plate.

Step 6



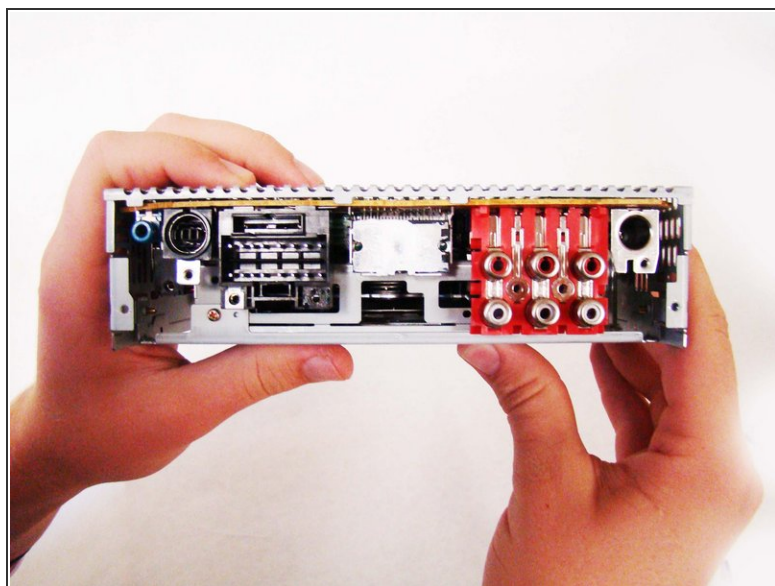
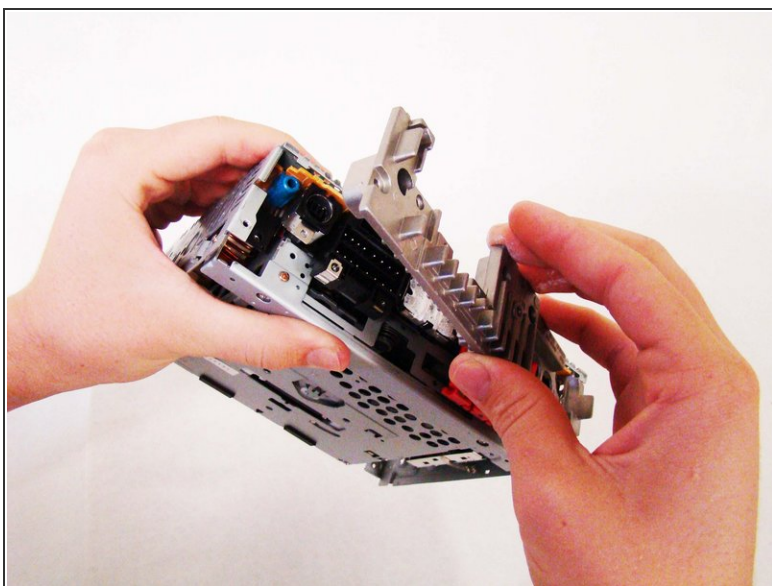
- Using the [Phillips #0 Screwdriver](#), unscrew the 8 gold screws (length - 9.26mm), located on the back side of the stereo.
- Using the [Phillips #0 Screwdriver](#), unscrew the 2 black screws (length - 13.27mm), also located on the back of the stereo.
- Using the [Phillips #0 Screwdriver](#), unscrew the 1 gold screw (length - 9.3mm), located on the bottom of a hole as noted in pictures (2) and (3).

Step 7



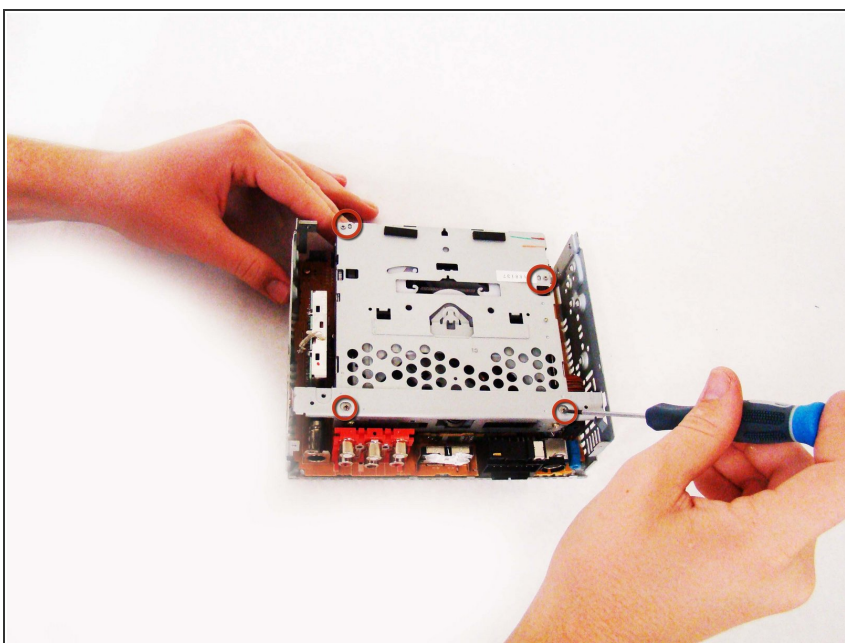
- Carefully pull the fuse out of the back of the stereo.

Step 8



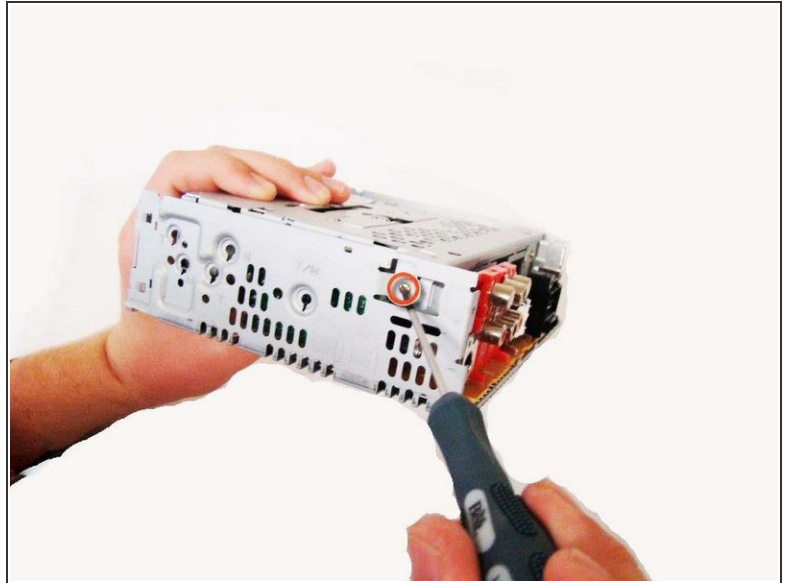
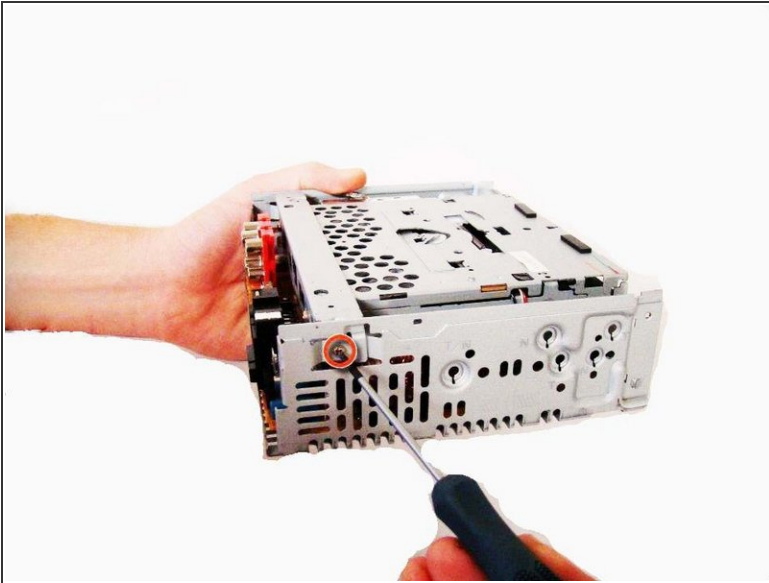
- Firmly grip the body of the stereo and pull off the silver back plate.

Step 9



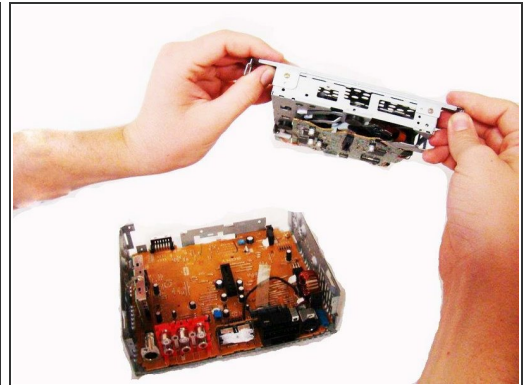
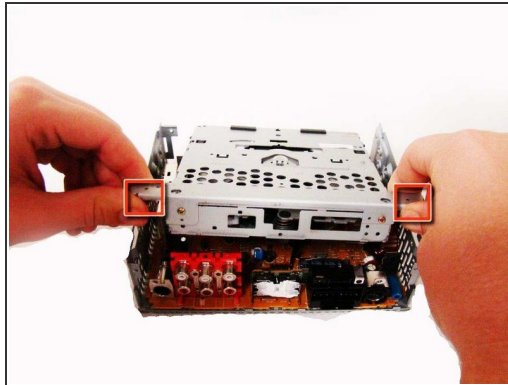
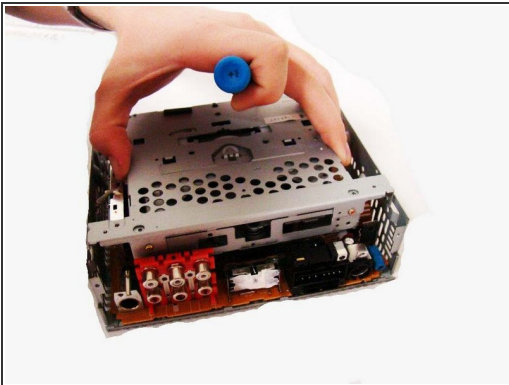
- Using the [Phillips #0 Screwdriver](#), unscrew the 4 dark-silver screws (length - 3.71mm).

Step 10



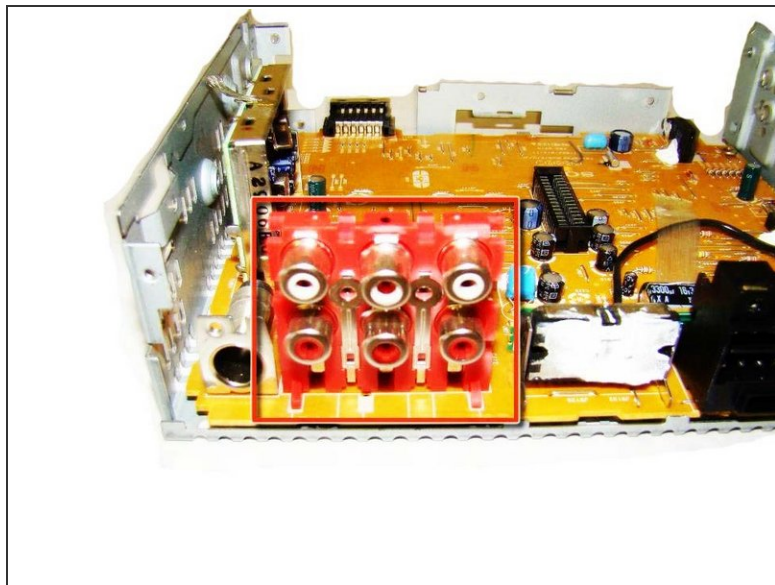
- Using the [Phillips #0 Screwdriver](#), unscrew the 2 gold screws (length - 7.34mm) found on both sides of the stereo.

Step 11



- Grip the top portion of the stereo, where the CD-Drive is located, and gently pull up to release it, but you will not be able to lift it all the way out.
- Grab the two tabs located near the back of the stereo, and gently pull the CD-drive front from the rest of the device.

Step 12 — Audio In/Audio Out Inputs



- To remove the Audio In/Audio Out inputs on the circuit board please refer to the [iFixit soldering guide](#) to assist you.

To reassemble your device, follow these instructions in reverse order.