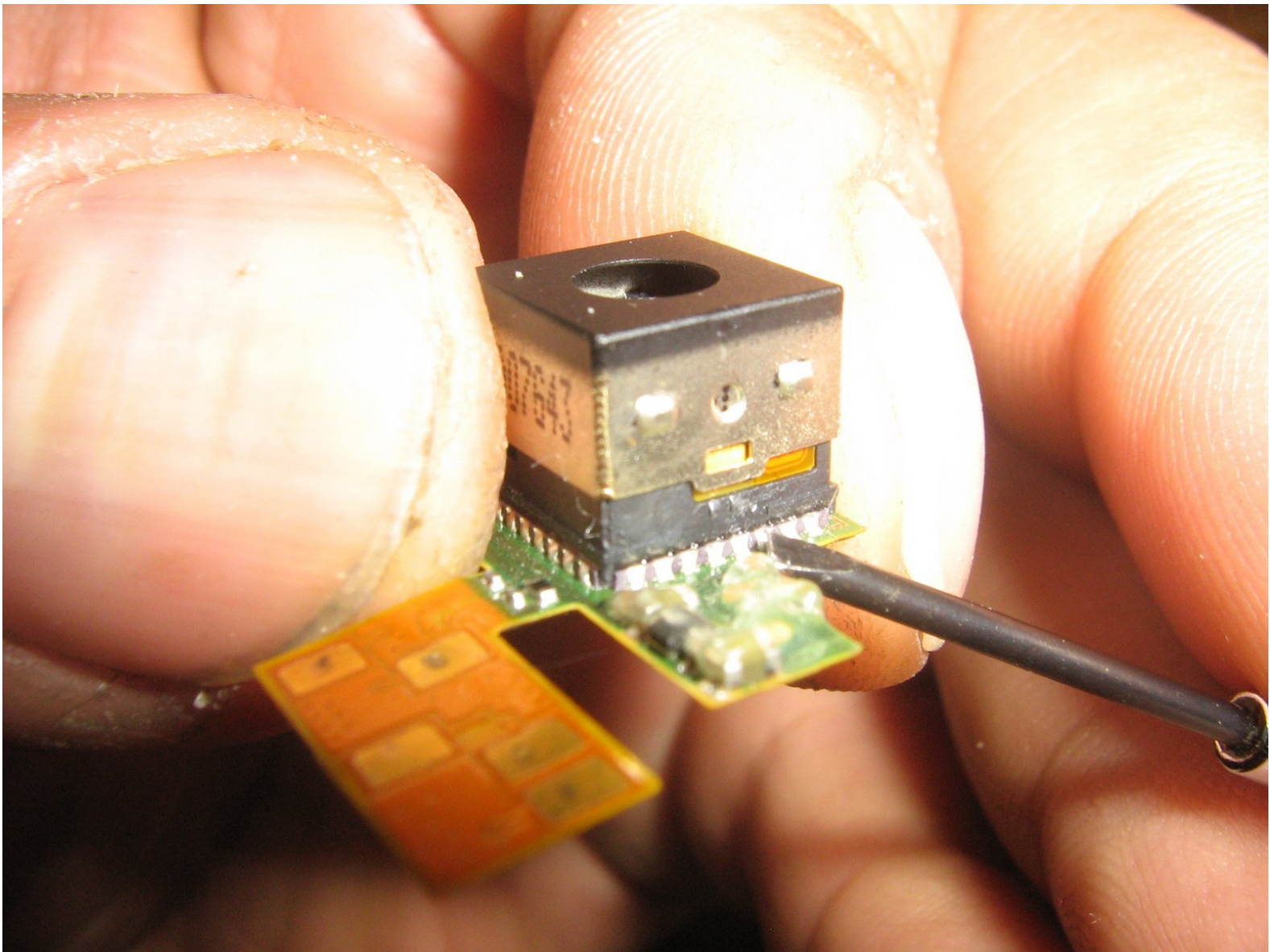




Disassembling Motorola Droid Camera

Is your Camera sticking and not focusing properly? If you have no ear of tiny parts, follow this simple guide to get Into the camera itself and perhaps save your camera!

Written By: Stego



INTRODUCTION

You've already gotten To the Camera Assembly, so why not go just a bit further? Lint can easily get in and wreak havoc with the micro-ball-bearings found within the camera assembly, and cleaning the assembly iis quite straightforward. Beware: Really Teeny Parts ahead!!

TOOLS:

- [Spudger](#) (1)
 - [T5 Torx Screwdriver](#) (1)
-

Step 1 — Battery



- Slide the battery cover downwards while applying pressure to the center of the battery cover with your thumb.
- Lift and remove the battery cover out from the phone.

Step 2



- Grasp the upper left corner of the battery and lift it out of its housing.

Step 3 — Rear Case



- Use a spudger to lift and remove the black plastic screw cover at the top of the phone near the camera.
- ❗ The cover is attached by adhesive, so some force may be required.

Step 4



- Using the tip of a spudger, peel up one corner of the gold ribbon beneath the battery compartment.
- Peel the ribbon off the phone.

Step 5



- Carefully peel the device information label that covers the motherboard EMI shields.
- i** This label contains important information specific to the phone. Remove it with care and keep it in a safe place.

Step 6



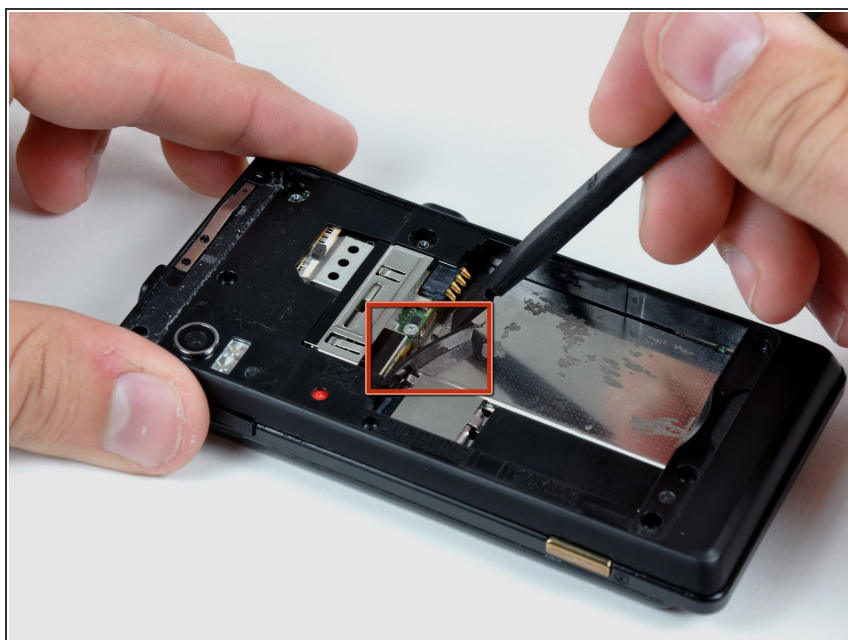
- Insert the flat end of a spudger and pry the plastic camera cover up off the phone.
- !** The thin plastic cover is attached to the phone with an adhesive. Work slowly and carefully.

Step 7



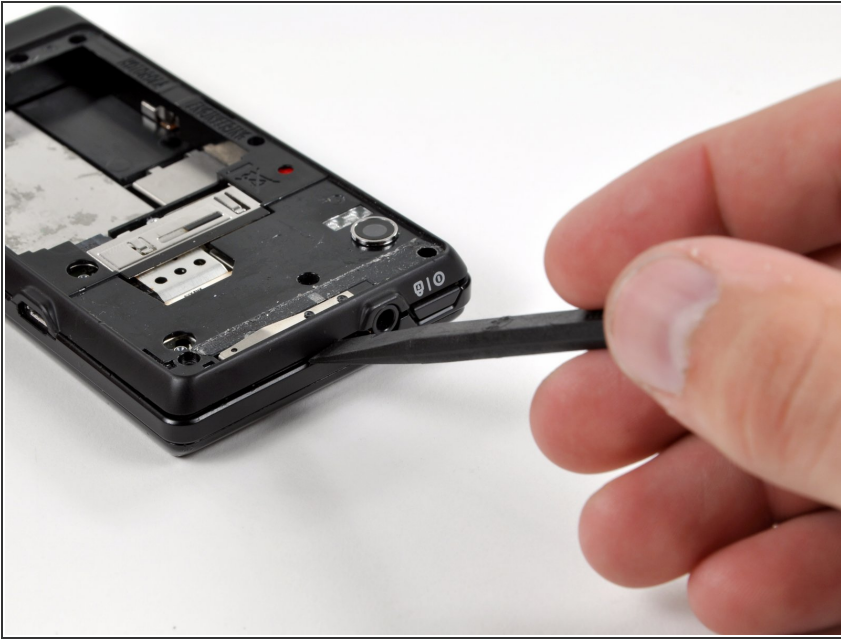
- Remove the seven 5.5 mm T5 Torx screws securing the rear case to the inner case.

Step 8



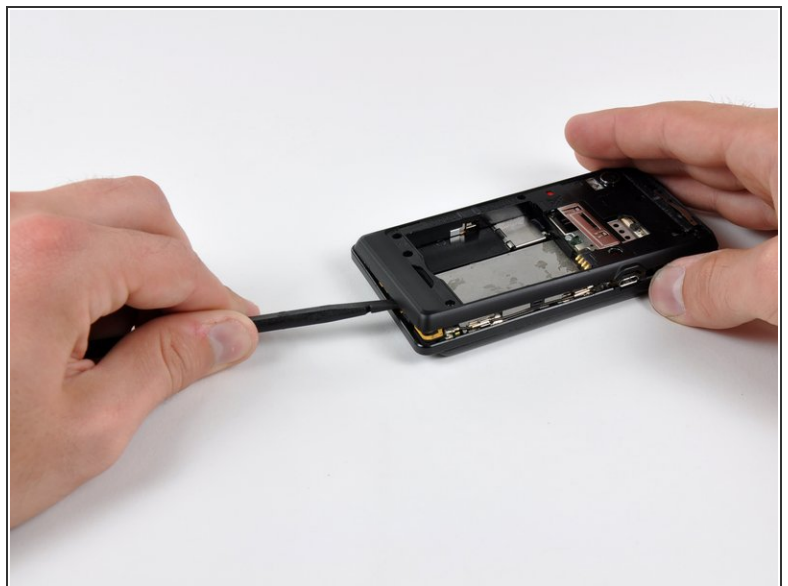
- Insert the flat end of a spudger and pry downwards to release the plastic tab holding the rear case to the motherboard screw.

Step 9



- Gently insert a spudger between the rear case and front case at the top of the phone, near the audio jack.
- Carefully pry the top edge of the rear case up from the rest of the phone.

Step 10



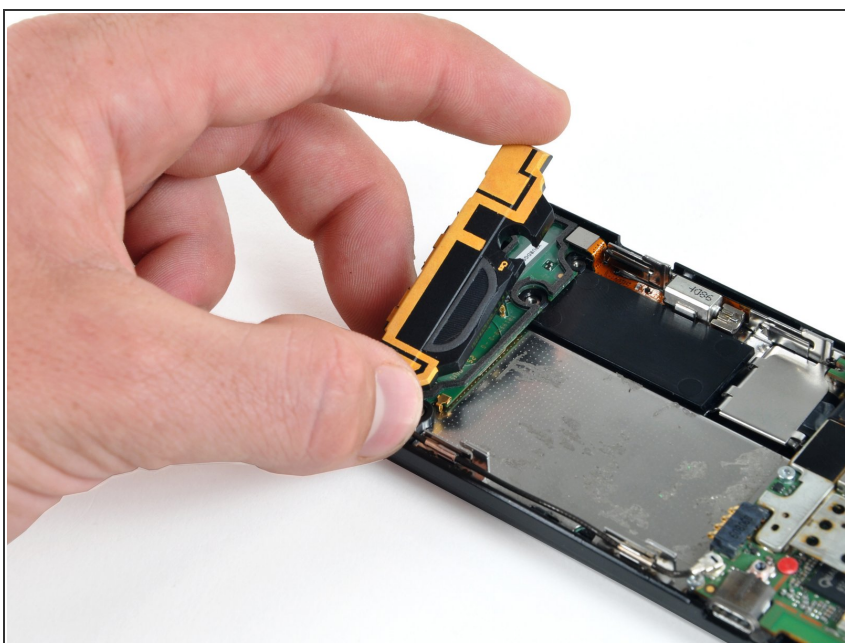
- With the spudger still inserted between the rear case and front case, slide the spudger along the right edge of the device, moving toward the bottom, prying as you go.
- Continue prying along the bottom edge of the device from right to left, freeing it from the front panel.

Step 11



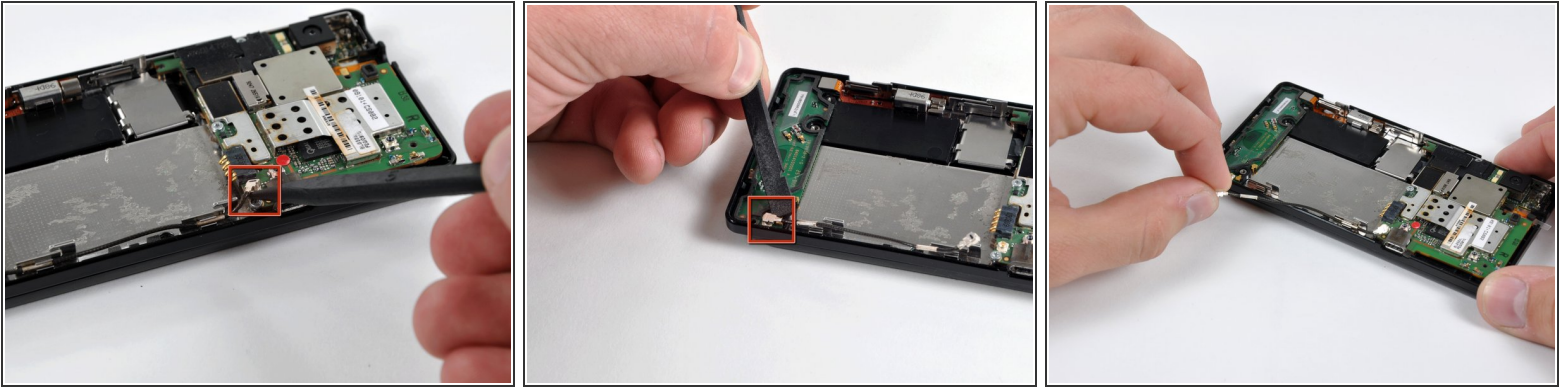
- Continue prying the rear case from the front case along the left side, moving from bottom to top.
- Lift the rear case up out of the phone.

Step 12 — Speaker



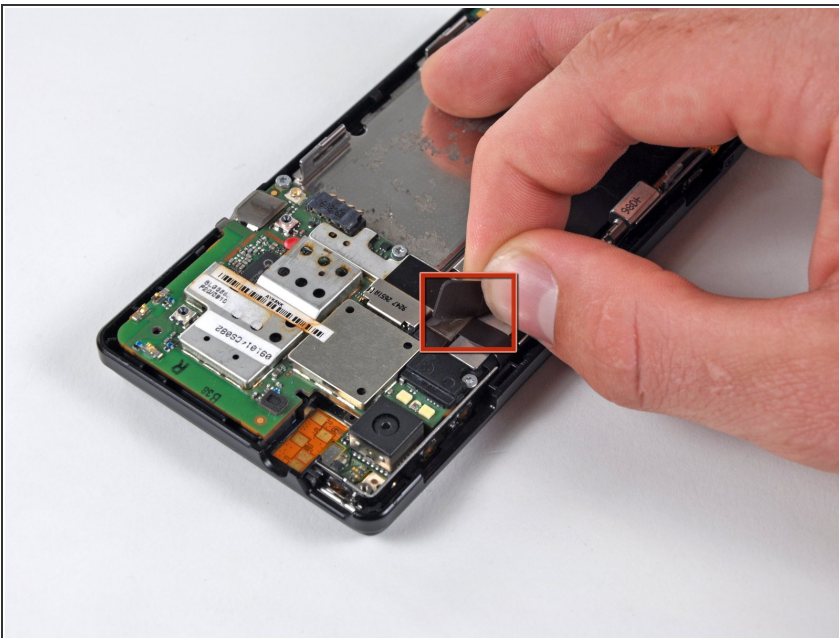
- Carefully lift and remove the speaker assembly up out of the phone.

Step 13 — Motherboard



- Use a spudger to pry the antenna cable connectors from their respective sockets on the motherboard and the speaker/antenna board.
- De-route the antenna cable by pulling it out of the metal clips along the side of the front case.

Step 14



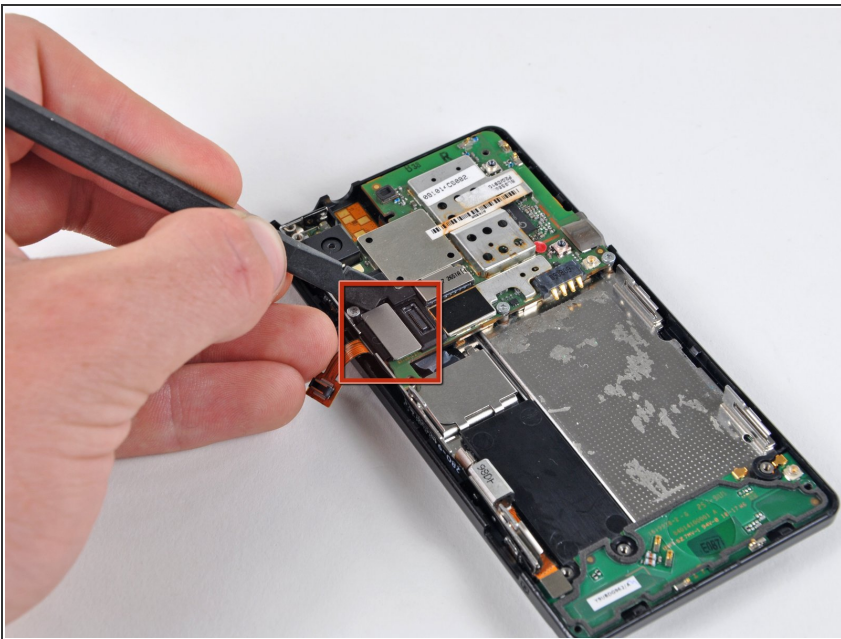
- Peel the black tape covering the side button and display ribbon connectors on the motherboard.

Step 15



- Disconnect the power button/volume button connector from its socket on the motherboard using the flat end of a spudger.

Step 16



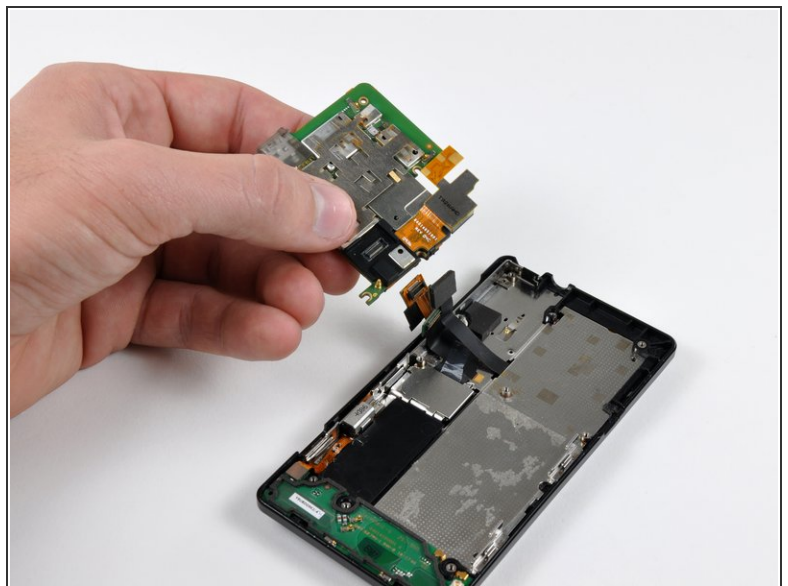
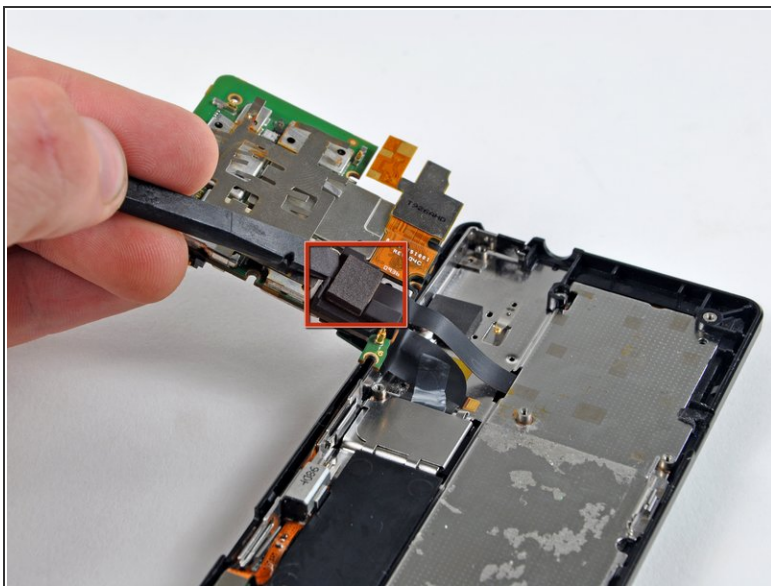
- Disconnect the display ribbon connector from its socket on the motherboard using the flat end of a spudger.

Step 17



- Remove three 3.8 mm T5 Torx screws securing the motherboard to the front case.
- ⚠ Don't attempt to remove the motherboard yet, it is still attached by the keypad ribbon connector.

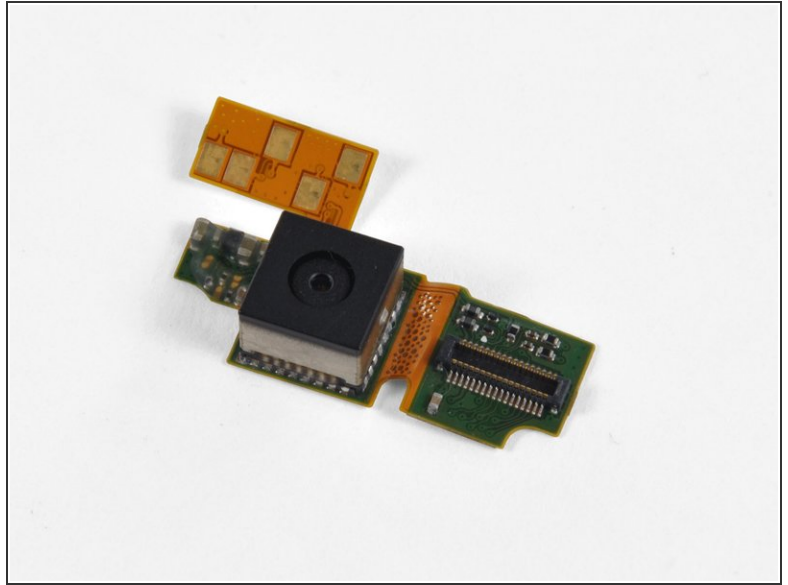
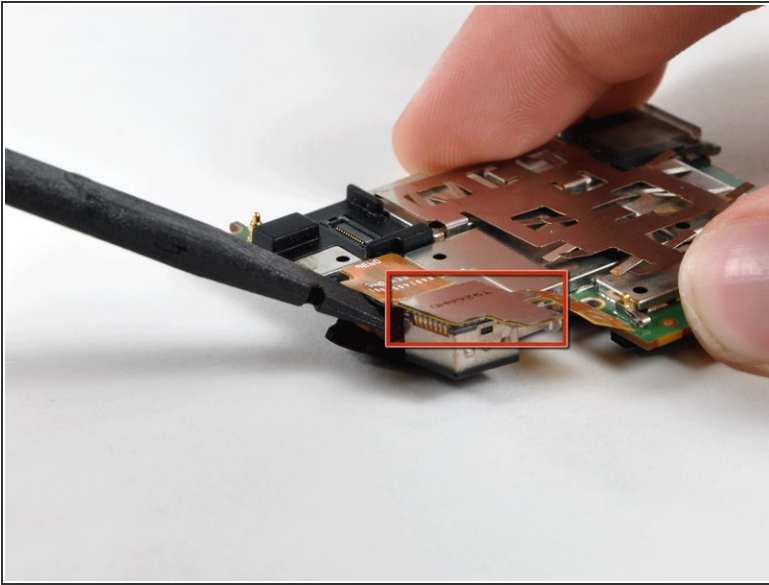
Step 18



- ⓘ Carefully lift the motherboard from the front case and lay it next to the Droid, minding the keypad connector that is still attached.
- Disconnect the keypad connector by prying it straight up off its socket on the motherboard.
- Remove the motherboard from the phone.

This document was generated on 2020-11-19 01:13:34 PM (MST).

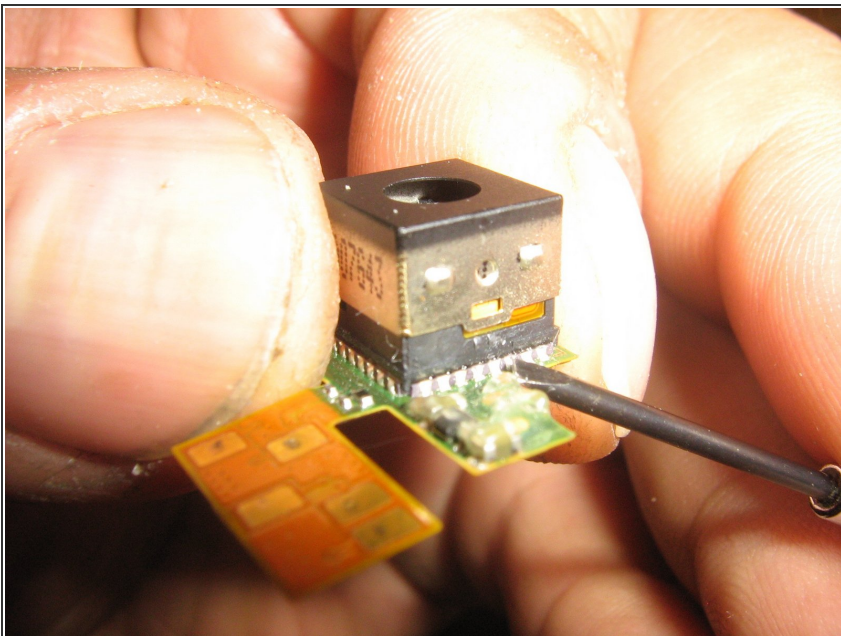
Step 19 — Camera Assembly



i Orient the motherboard so that the camera lens is face down.

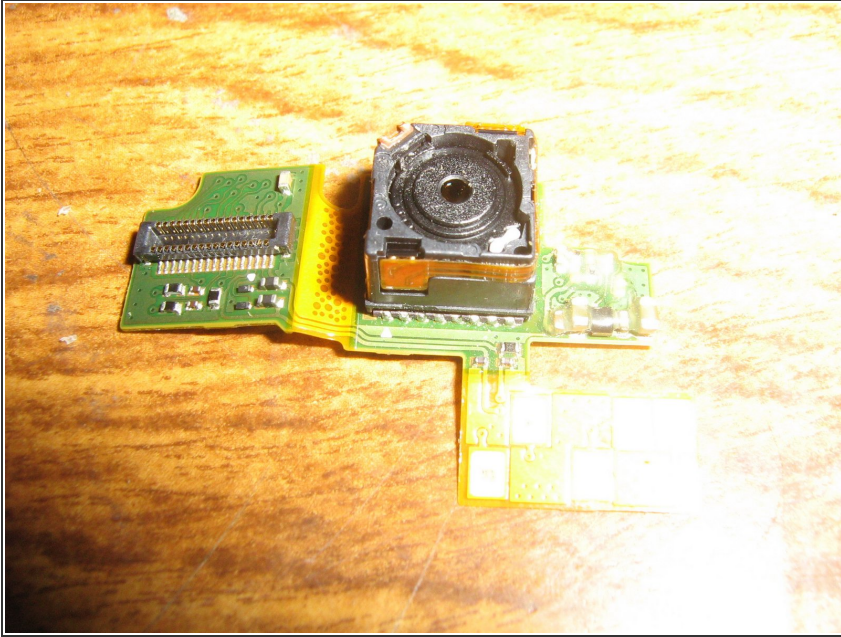
- Disconnect the camera connector from its socket by prying it straight up with a spudger.
- Remove the camera assembly.

Step 20 — Disassembling Motorola Droid Camera



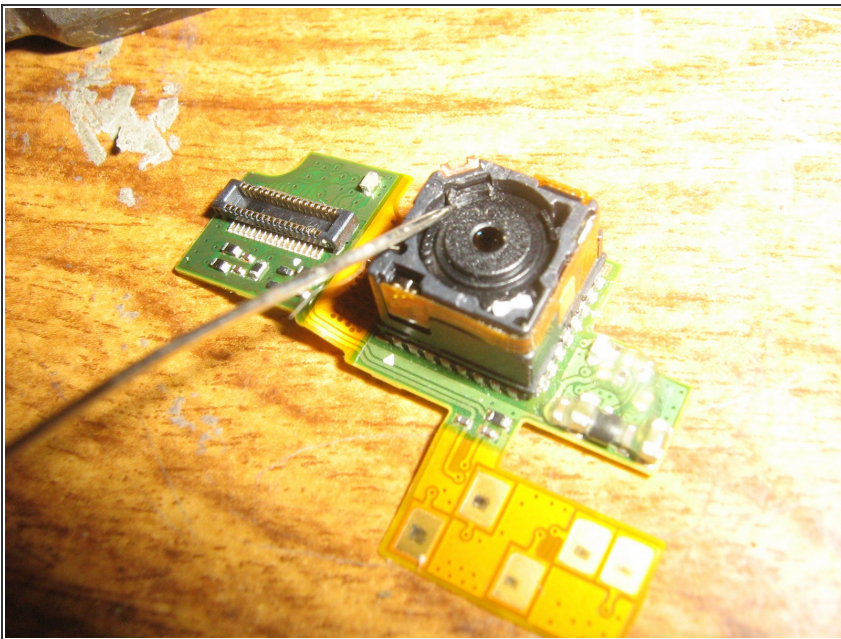
- Use a flat jewelers screwdriver to gently pry up the housing surrounding the Camera lens. Pry up one side first, then the other.
- Note the orientation of the Dimple on the side of the cover, as it will need to go on the same way during Reassembly.

Step 21



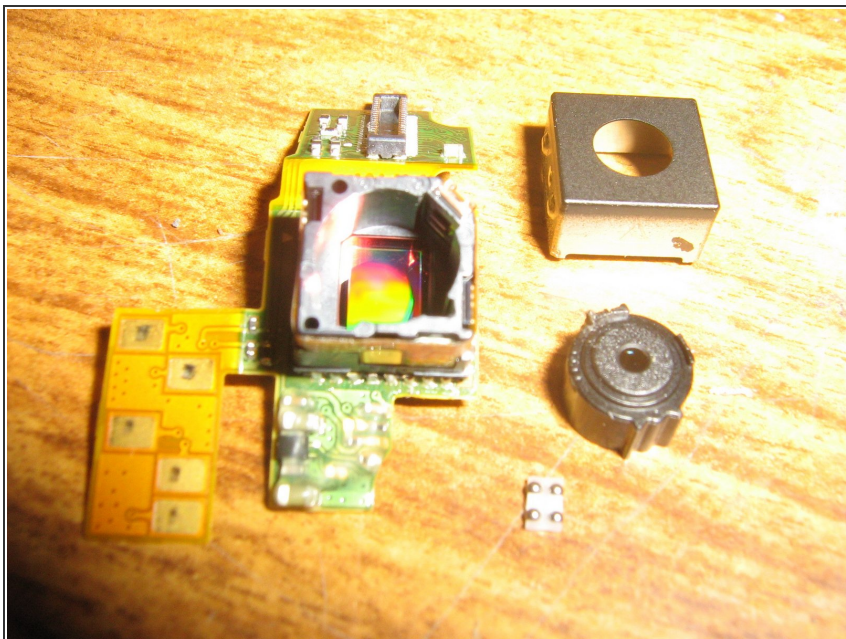
- With the cover off, you can now see the top of the Lens holder, and immediately next to that the white Micro-Ball-Bearing shuttle. Normally, the Lens Holder should somewhat easily raise and lower, but if you are This far into it, chances are that it isn't moving easily.

Step 22



- To lift out the Lens Holder, use a Pin to carefully lift an edge of the Lens Holder.
- ⚠ **WARNING:** Don't just turn over the assembly and tap it on the work surface: You can Easily lose the Micro-Ball-Bearing shuttle!!

Step 23



- With the Lens holder lifted, the Micro-Ball-Bearing shuttle will simply fall into the cavity: Gently tip out the shuttle onto your work surface.

- ⚠ DON'T SNEEZE! That Micro-Ball-Bearing shuttle is quite lightweight, indeed!!
- ⚠ The CCD is at the Bottom of the Cavity: Please respect it, and don't touch it with anything dirty!!

To reassemble your device, follow these instructions in reverse order.