



# Panasonic Lumix DMC-ZS1 LCD Display Screen Replacement

Step by step guide to replacing your damaged LCD Display

Written By: Sales Cameraparts4you



[www.cameaparts4you.com](http://www.cameaparts4you.com)

---

## INTRODUCTION

Step by step guide to replacing your damaged LCD Display

---



### PARTS:

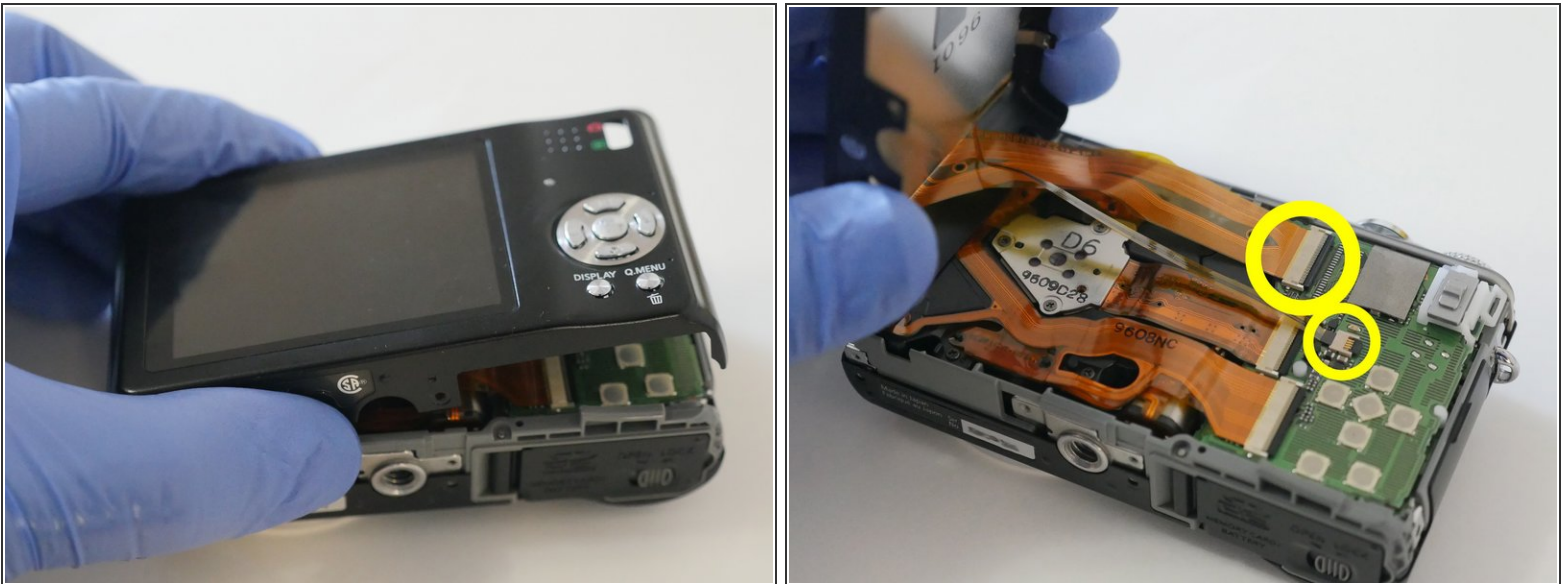
- [DMC-ZS1 LCD Display Part VYK3D81](#) (1)
-

## Step 1 — Exterior Screw removal



- Remove the battery and memory card from the unit
- Remove 6 (0.3mm) screws from the sides of the unit
- Remove 5 (0.3mm) screws from the bottom of the unit

## Step 2

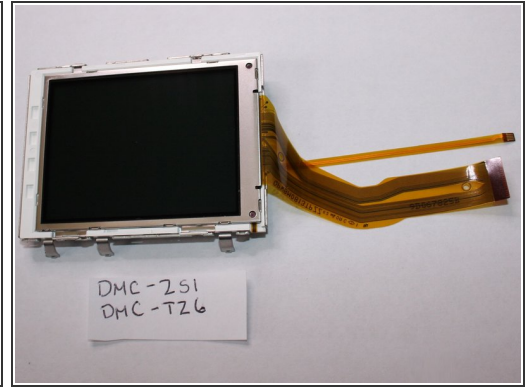
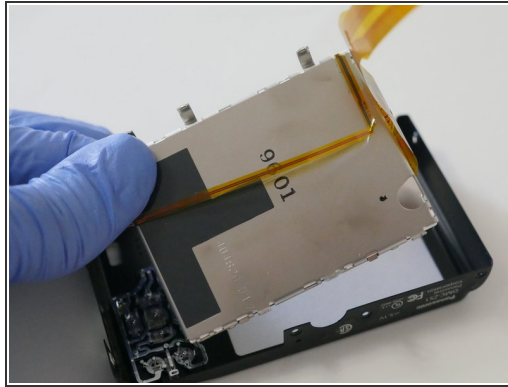
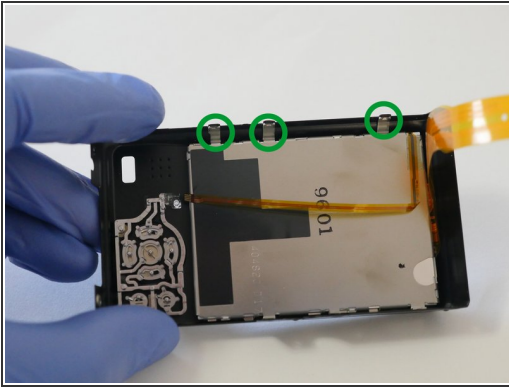


- Lift up slightly the rear cover.

⚠ Do not remove rear cover yet. It is still attached to the Main PCB.

- Flip up the cable clamps using a spudger or other device. Careful not to break the clamps. Release flex cables and remove back cover.

## Step 3



- Release the 3 metal clips from the rear cover and remove the LCD

To reassemble your device, follow these instructions in reverse order.