



Panasonic Camera DMC-TZ3 LCD DISPLAY Replacement

Step by step guide for replacing your damaged LCD Display.

Written By: Sales Cameraparts4you



www.cameraparts4you.com

INTRODUCTION

Step by step guide for replacing your damaged LCD Display.



TOOLS:

- [Phillips PH000 Screwdriver](#) (1)



PARTS:

- [DMC-TZ3 LCD DISPLAY SCREEN VYK2C31](#) (1)

Step 1 — Step 1



- Remove the battery and memory card from the device.

Step 2 — Step 2



- Remove the single .5mm screw on the left side of the camera.

Step 3 — Step 3



- Remove 4 (0.5mm) screws from the right side of the camera.
 - There are two screws at the top.
 - There are two screws at the bottom.

Step 4 — Step 4



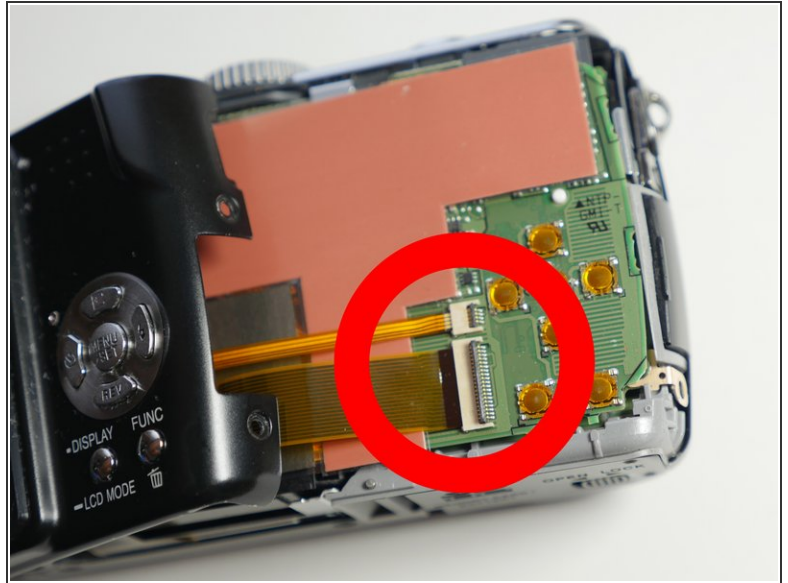
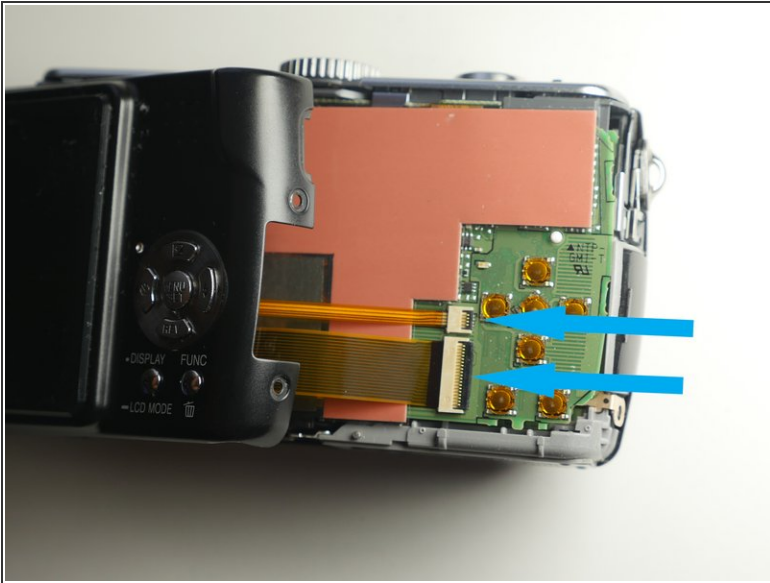
- Remove 5 screws from the base of the camera.
 - There are two (0.2mm) screws next to the battery compartment.
 - There are three (0.5mm) screws around the tripod base mount.

Step 5



- Slowly open the back cover away from the device
 - The wrist strap bar can easily be lost so now is a good time to remove it.
- ⚠ Use caution. The rear cover is attached to the Main PCB via cables. You will need to release these cables before removing the rear cover.

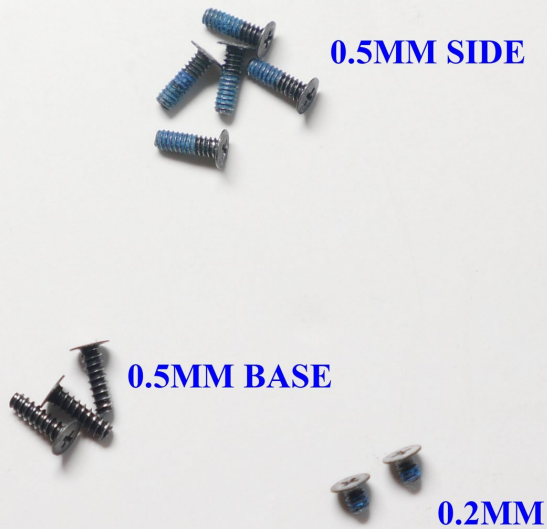
Step 6



- Detach both ribbon cables using a spudger or other method.
 - Lift the black clip upward, unlocking the ribbon cable
 - Once the clip is in the up position you can slide the cable out. Release cable by pulling the cable out.
- ⚠ DO NOT pull on the Back case to release the cable.

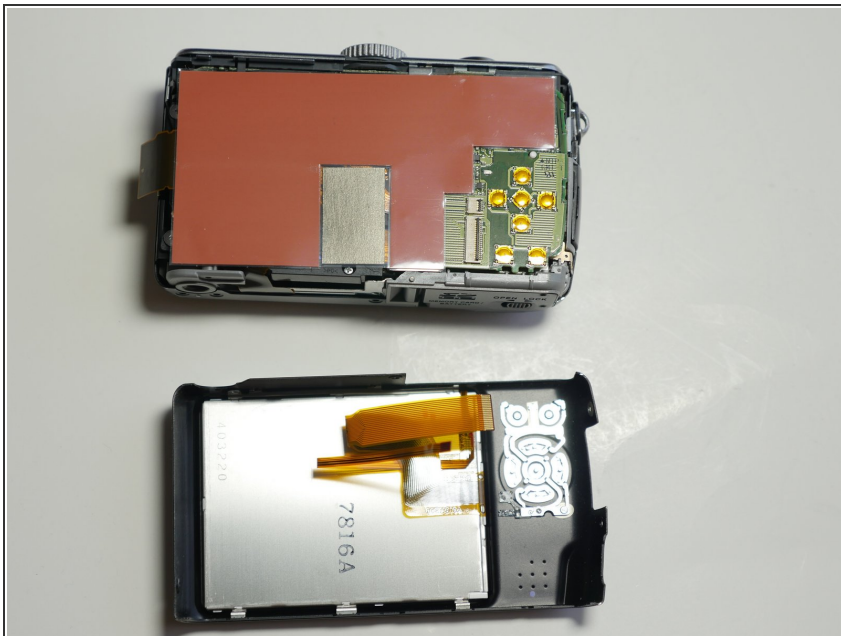
Step 7

DMC-TZ3 SCREW SET



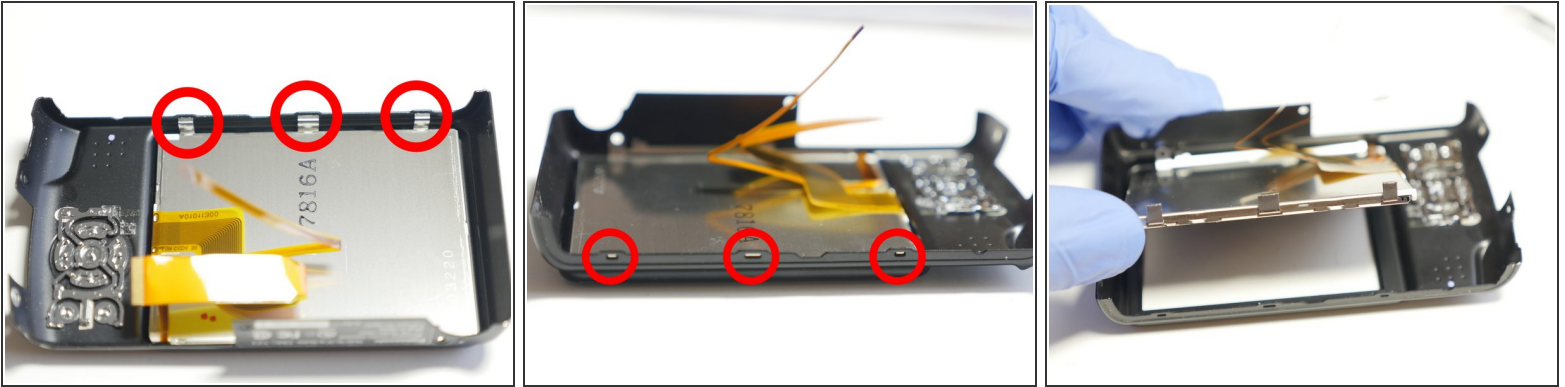
- Screw Arrangements
- Make sure you organize your screws to make re-assembly easier.

Step 8 — Step 8



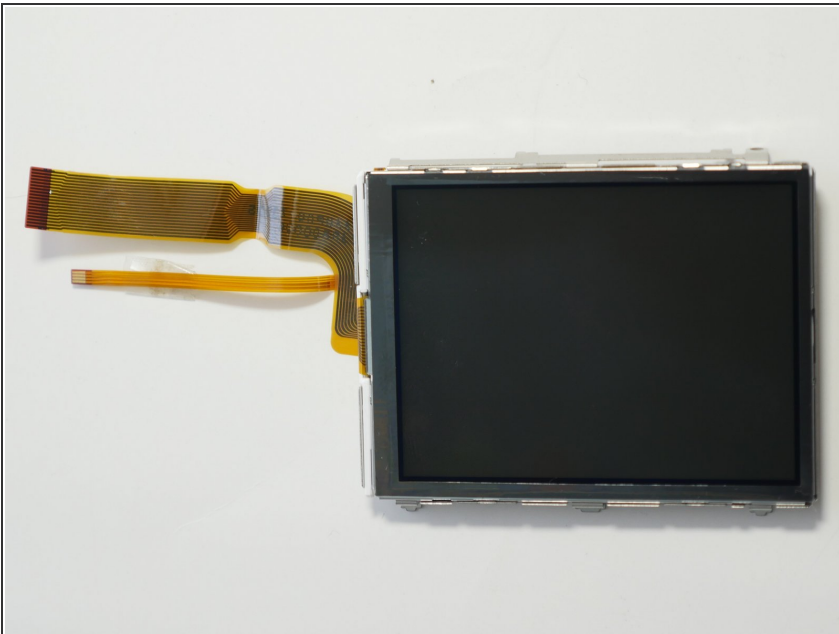
- Remove the back casing from the camera.

Step 9



- Use a spudger or other tool to release the 3 clips between the LCD case and housing.
- Note: when re-assembly all 3 clips need to be seated in the grooves as shown in the 2nd picture.
- Lift LCD out as shown in 3rd picture

Step 10



- Swap out your old LCD with the new LCD
- You can purchase your LCD with Backlite or Without. It is much easier if your purchase the LCD with Backlite.
- [Panasonic Lumix DMC-TZ3 LCD Display Replacement Part VYK2C31](#)

To reassemble your device, follow these instructions in reverse order.