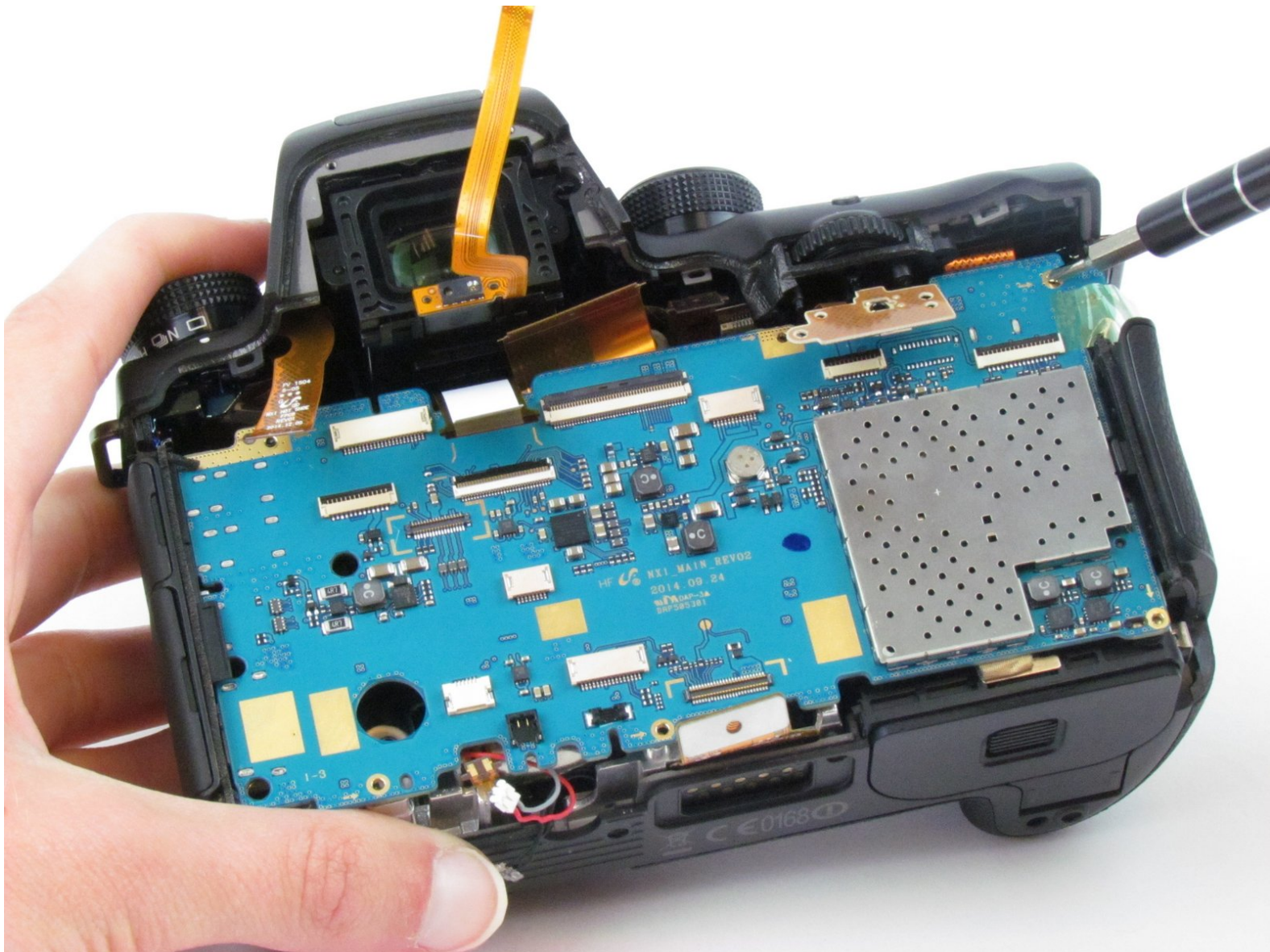




Samsung NX1 Motherboard Replacement

The motherboard controls all of the internal functions of the camera.

Written By: Hannah Patrick



INTRODUCTION

Replace the motherboard of the camera, located underneath the back cover.



TOOLS:

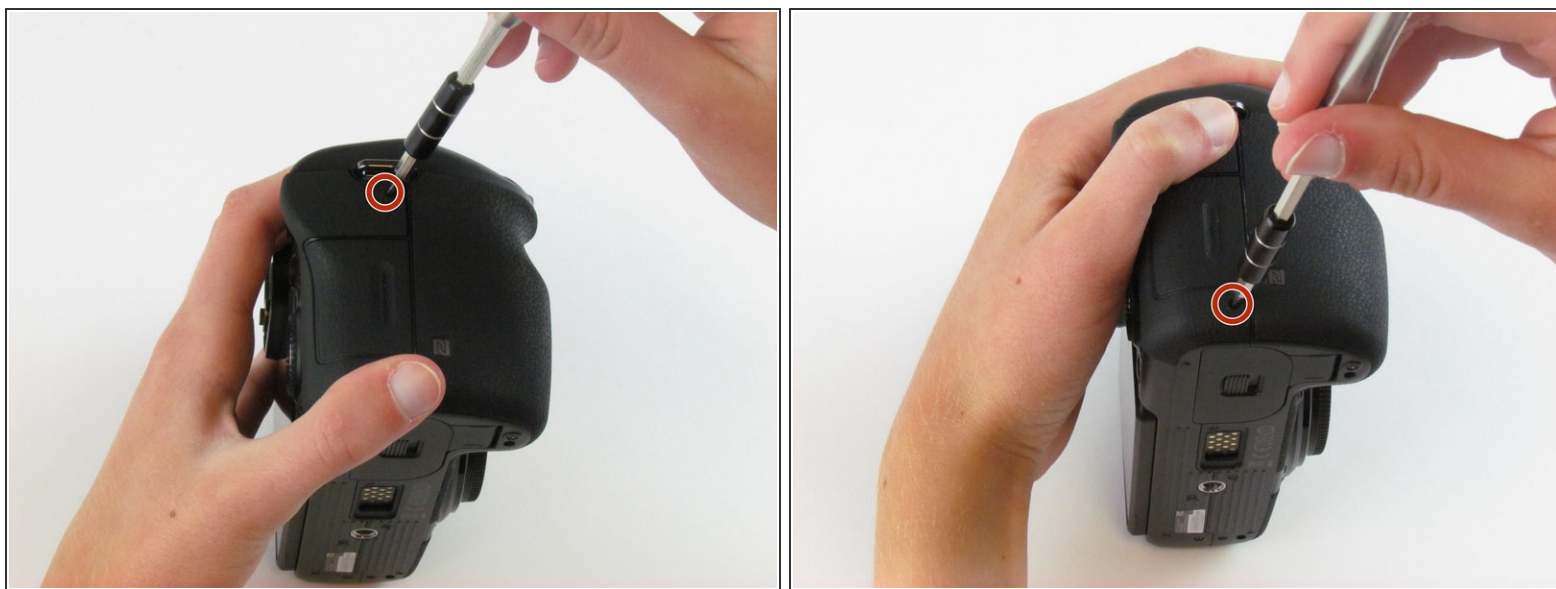
- [Phillips #00 Screwdriver](#) (1)
 - [Tweezers](#) (1)
 - [Spudger](#) (1)
-

Step 1 — Back Cover



- Use the Phillips #00 screwdriver to remove the four 5.5 mm screws surrounding the viewfinder.
- Use your fingers to lift the plastic viewfinder cover upward.

Step 2



- Use the Phillips #00 screwdriver to remove the two 5.5 mm screws from the right side of the camera above the SD card port.

Step 3



- Use the Phillips #00 screwdriver to remove one 5.5 mm screw on the left, above the HDMI port.

Step 4



- Use the Phillips #00 screwdriver to remove the five 5.5 mm screws from the bottom, near the battery compartment.
- Use the Phillips #00 screwdriver to remove one 3.8 mm screw from the bottom of the hand grip, below the battery compartment.

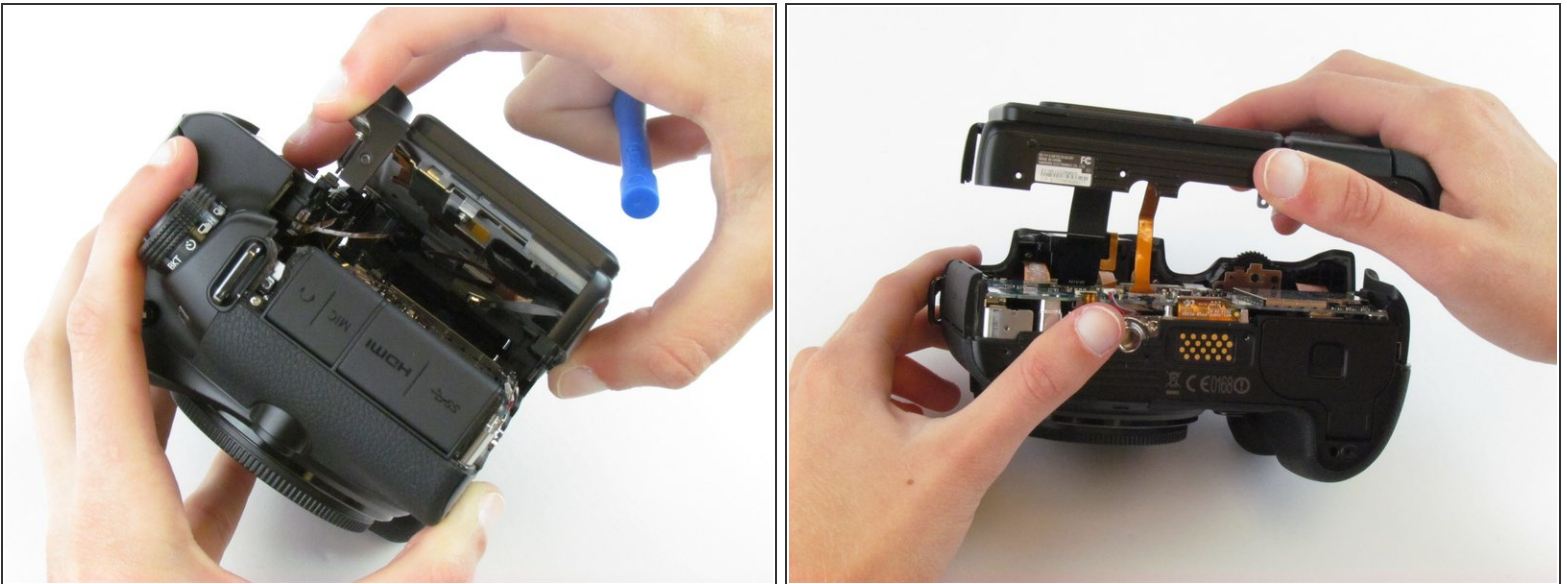
Step 5



- Use a plastic opening tool to separate the back cover from the front cover.

i Pry the back cover in this order: bottom, right side, left side.

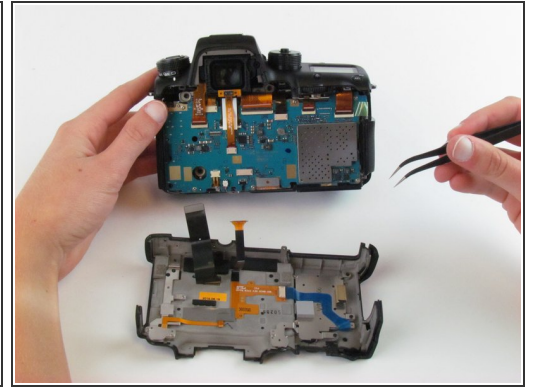
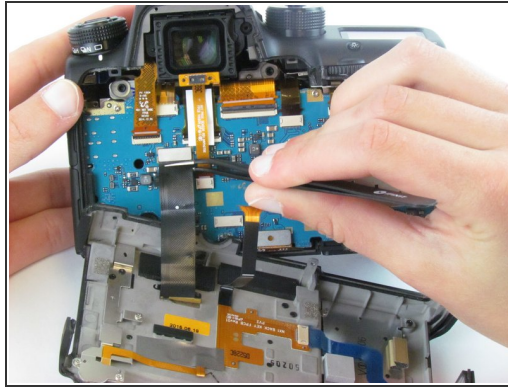
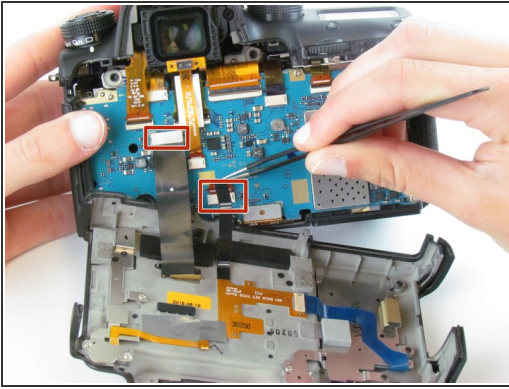
Step 6



- Use your fingers to pull the back cover away from the front cover.

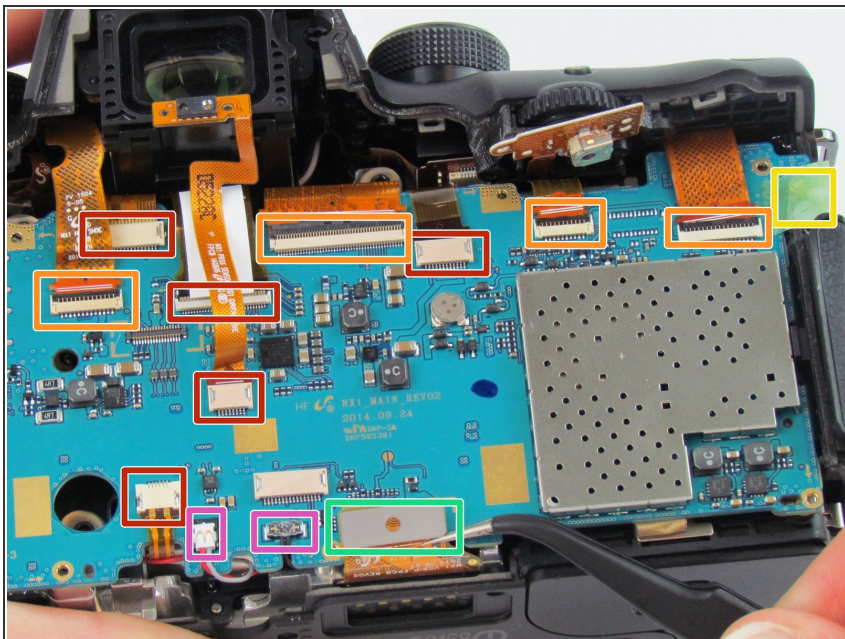
i Do not completely separate the back cover from the front cover as two cables hold these components together.

Step 7



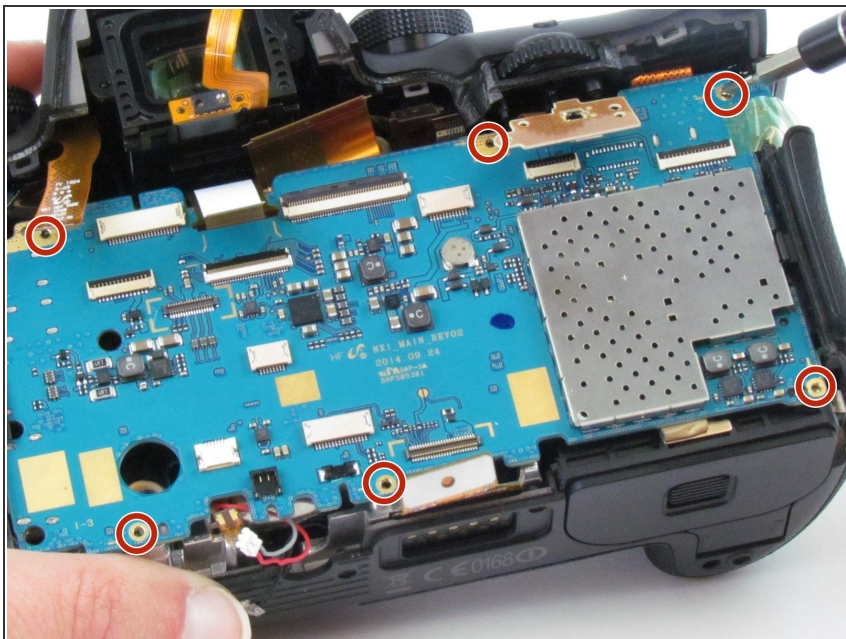
- Use tweezers to pull the two ribbon cables horizontally out of their clips.

Step 8 — Motherboard



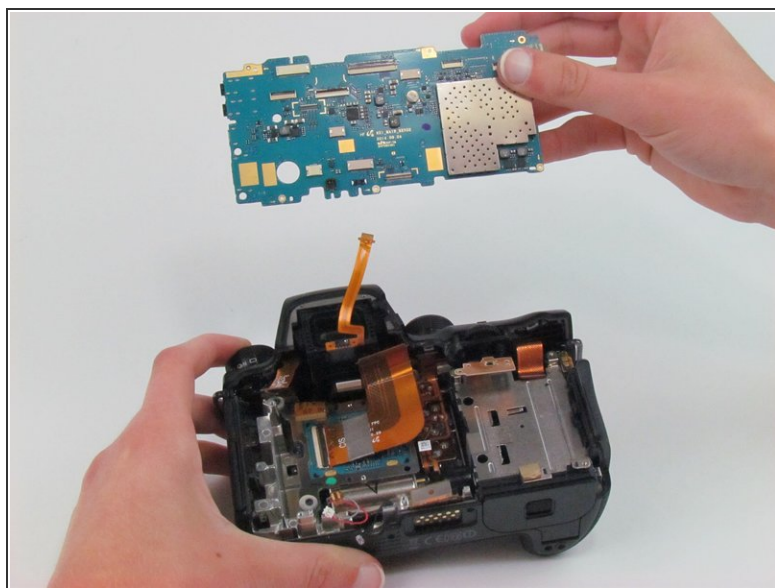
- Use tweezers to pull the five ribbon cables horizontally out of their clips.
- Use a spudger or your fingernail to flip up the four, small retaining flap, or zero insertion force (ZIF) connectors. Then, pull the ribbon cable out to disconnect it.
- Remove the green tape using your fingernail. Then, use a spudger to pry the one antenna cable connector straight up from the board.
- Use tweezers or a spudger to pry up each side of the flat-topped connector. Then, lift the one connector straight up from its socket.
- Use tweezers or your fingers to pull the two double-bundled cables up and away from the connector in the same direction that the individual wires are running.

Step 9



- Use the Phillips #00 screwdriver to remove the six silver 4.5 mm screws.

Step 10



- Use a spudger to lift the motherboard up starting on the right side proceeding to the left side.
- Use your fingers to lift the motherboard completely out of the camera.

To reassemble your device, follow these instructions in reverse order.