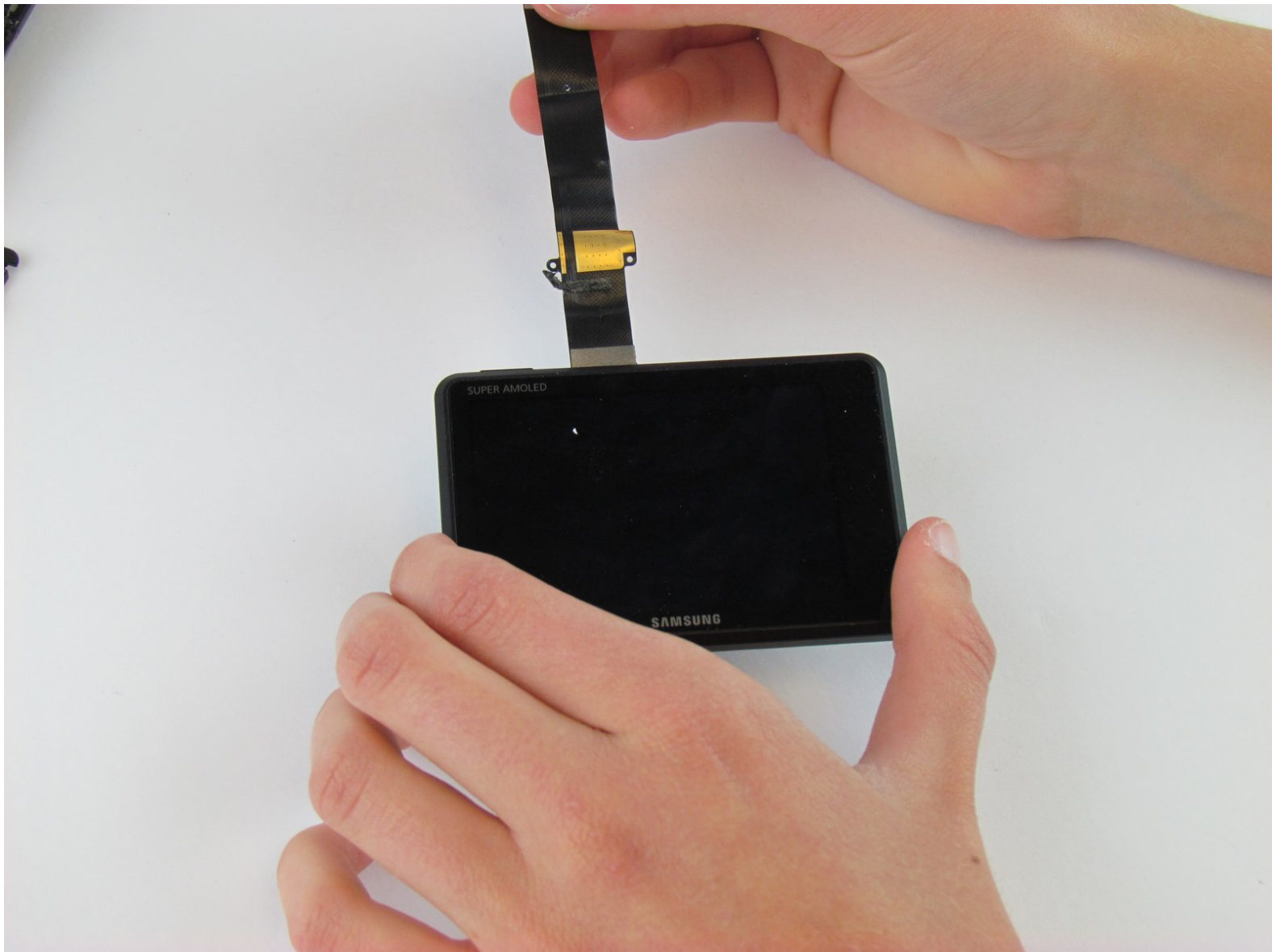




# Samsung NX1 LCD Touch Screen Replacement

Replace the LCD touch screen of the camera.

Written By: Hannah Patrick



---

## INTRODUCTION

The LCD touch screen displays the image and the camera settings.

---



### TOOLS:

- [Phillips #00 Screwdriver](#) (1)
  - [Tweezers](#) (1)
  - [Spudger](#) (1)
-

## Step 1 — Viewfinder Focus Dial



- Push the rubber viewfinder grip upward.

## Step 2



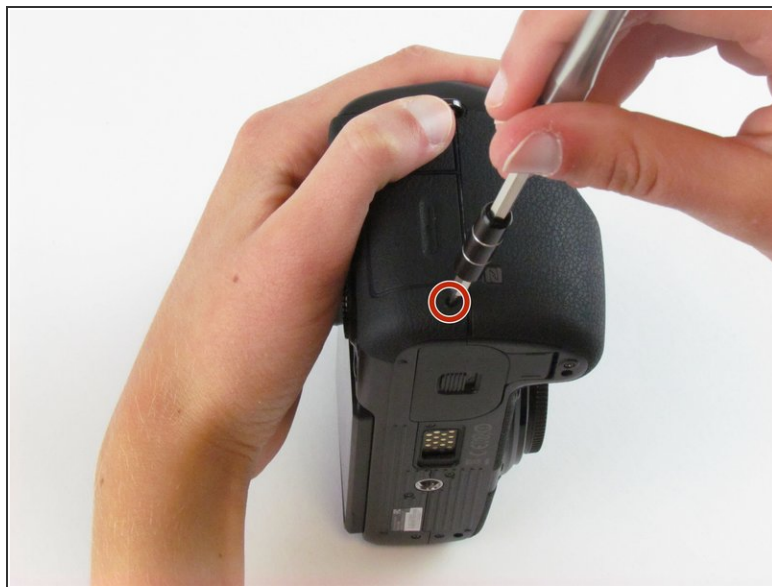
- Use the Phillips #00 screwdriver to remove one 6.4 mm screw in the center of the dial.
- Remove the dial by lifting upward with your fingers.

### Step 3 — Back Cover



- Use the Phillips #00 screwdriver to remove the four 5.5 mm screws surrounding the viewfinder.
- Use your fingers to lift the plastic viewfinder cover upward.

### Step 4



- Use the Phillips #00 screwdriver to remove the two 5.5 mm screws from the right side of the camera above the SD card port.



## Step 5



- Use the Phillips #00 screwdriver to remove one 5.5 mm screw on the left, above the HDMI port.

## Step 6



- Use the Phillips #00 screwdriver to remove the five 5.5 mm screws from the bottom, near the battery compartment.
- Use the Phillips #00 screwdriver to remove one 3.8 mm screw from the bottom of the hand grip, below the battery compartment.

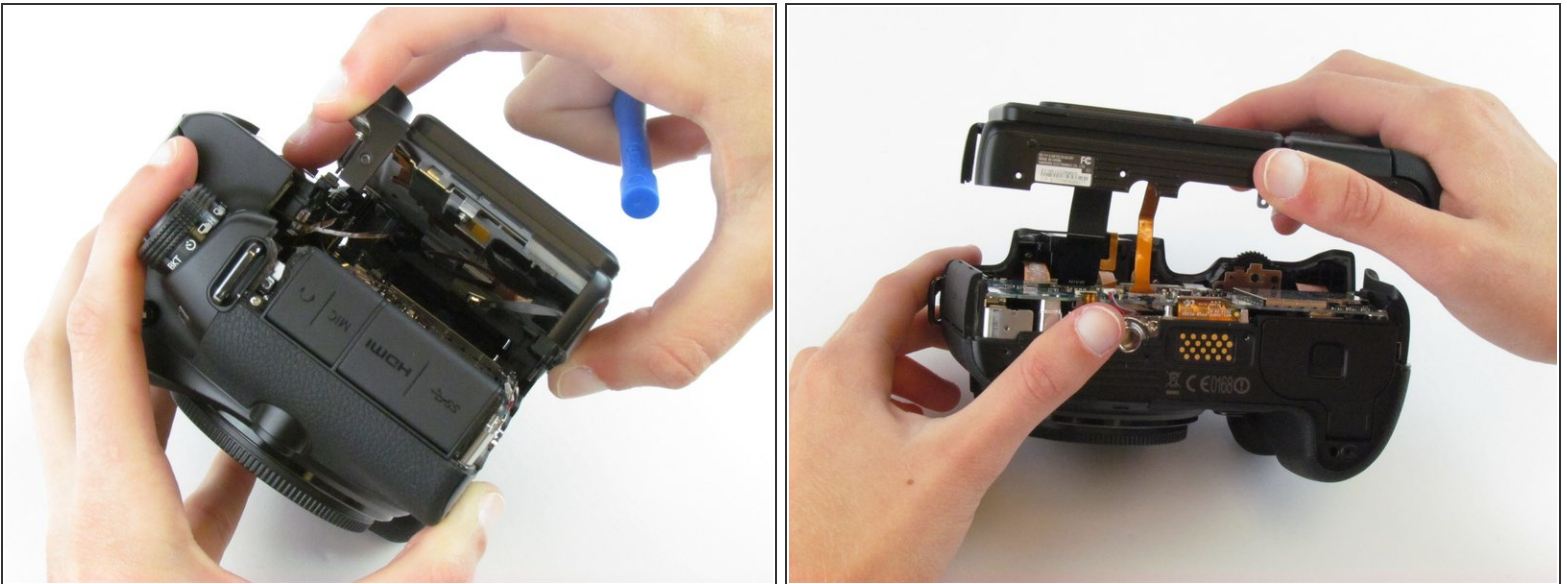
## Step 7



- Use a plastic opening tool to separate the back cover from the front cover.

**i** Pry the back cover in this order: bottom, right side, left side.

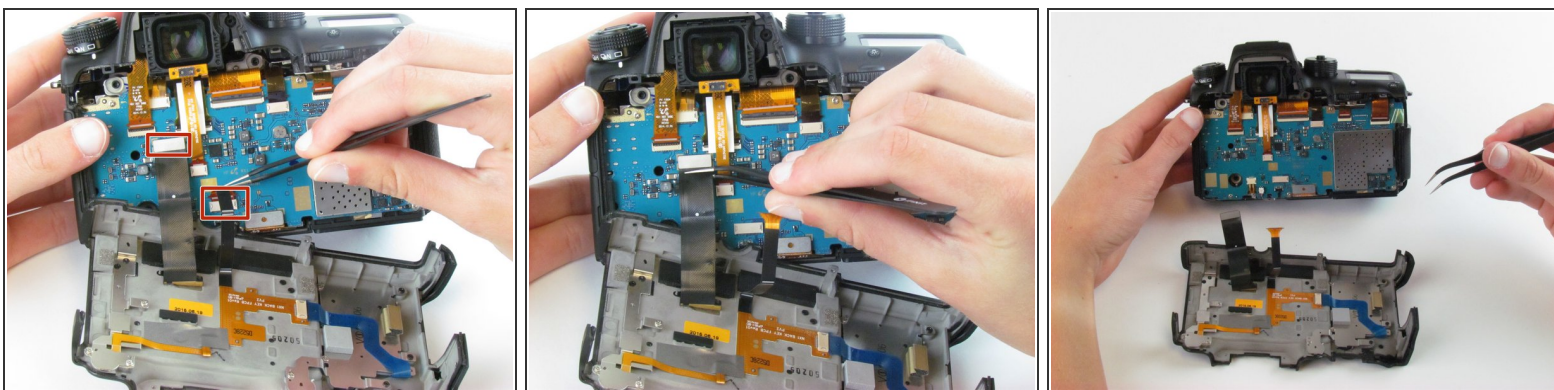
## Step 8



- Use your fingers to pull the back cover away from the front cover.

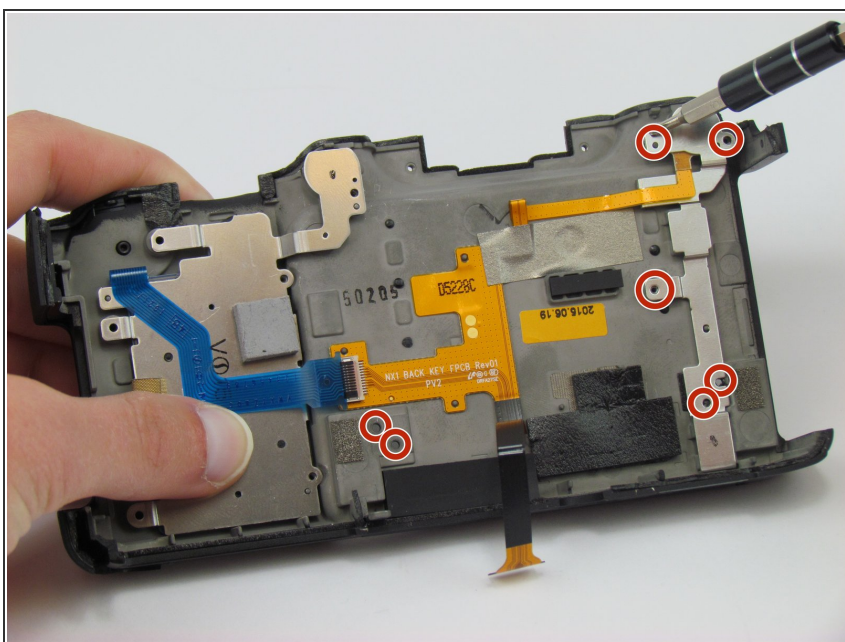
**i** Do not completely separate the back cover from the front cover as two cables hold these components together.

## Step 9



- Use tweezers to pull the two ribbon cables horizontally out of their clips.

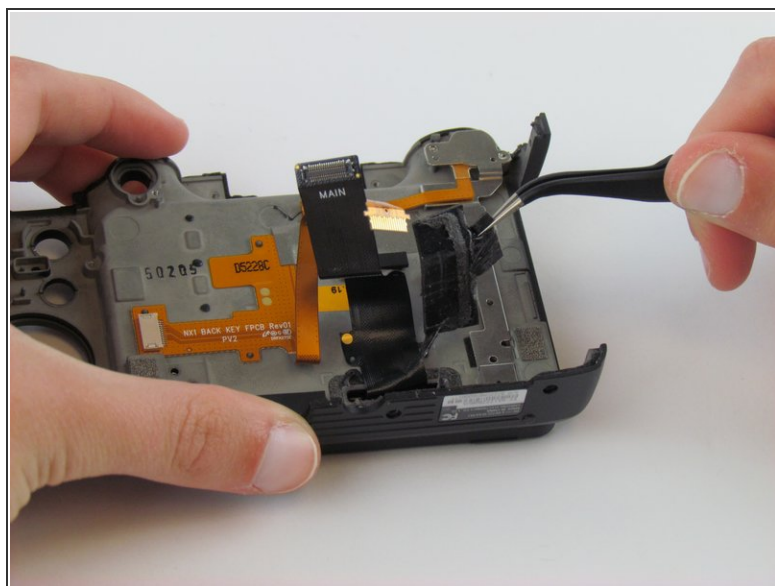
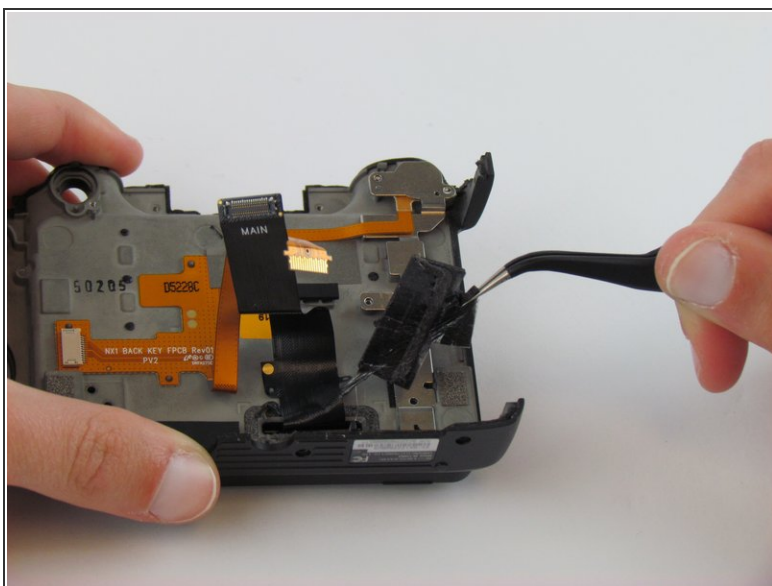
## Step 10 — LCD Touch Screen



- Use the Phillips #00 screwdriver to remove the seven screws (three silver 3.5 mm screws and four black 2.7 mm screws).

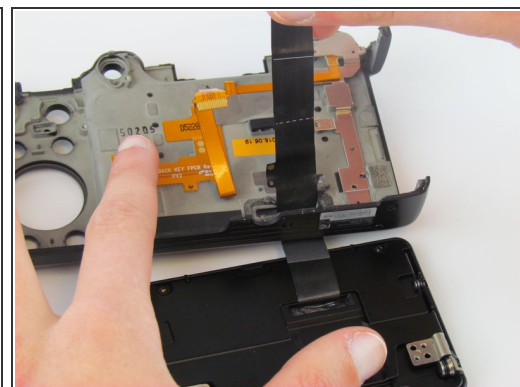
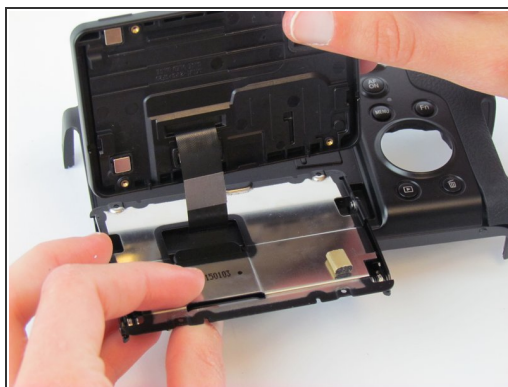
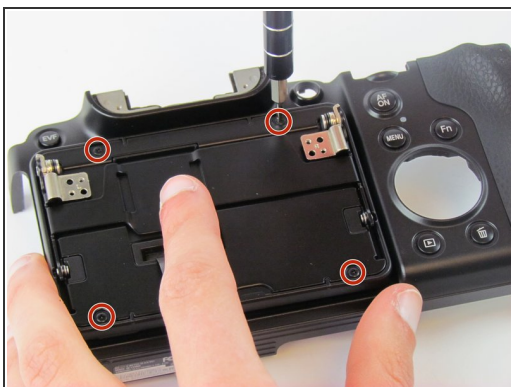


## Step 11



- Use tweezers to remove the glued rubber piece.

## Step 12



- Use the Phillips #00 screwdriver to remove the four black 2.3 mm screws.
- Use your fingers to separate the LCD screen from the folding mechanism.

To reassemble your device, follow these instructions in reverse order.