



Garmin Nuvi 1490T Display Screen Replacement

Use this guide to replace your Garmin Nuvi...

Written By: Ricardo Solis



INTRODUCTION

Use this guide to replace your Garmin Nuvi 1490T display screen.

TOOLS:

[iFixit Opening Tool](#) (1)

[T5 Torx Screwdriver](#) (1)

Step 1 — Front Frame Panel



- ① Power off your GPS before moving on.
- Locate the crevice that separates the frame from the body.

Step 2



- Carefully insert the plastic prying tool into the crevice to separate the frame from the body.

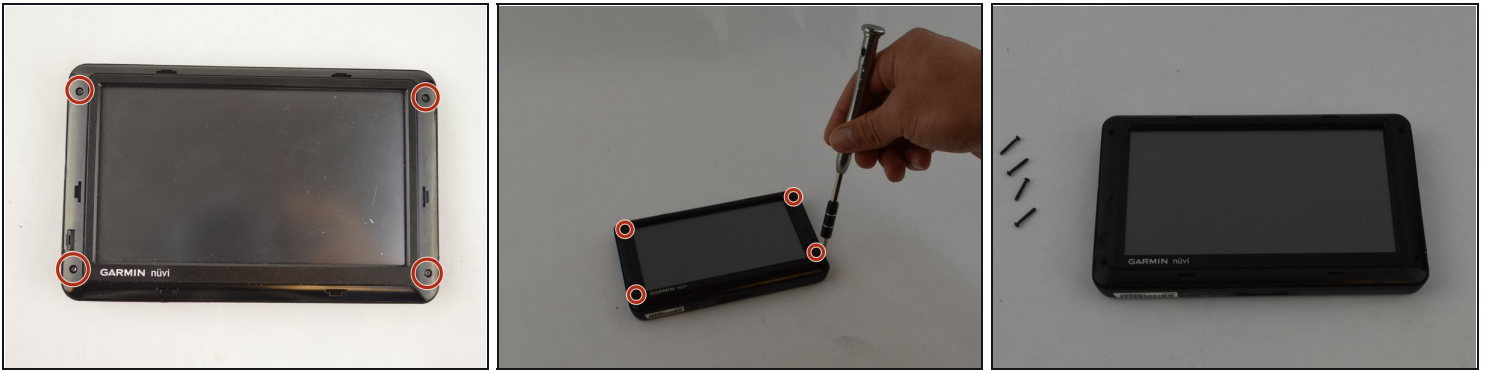
⚠ Applying excessive force can lead to a damaged or scratched display screen.

Step 3



- Slide the plastic prying tool around the perimeter to completely remove the frame.

Step 4 — Second Frame Panel



- Remove the four 11.0 mm screws using the Torx T5 screwdriver.

Step 5



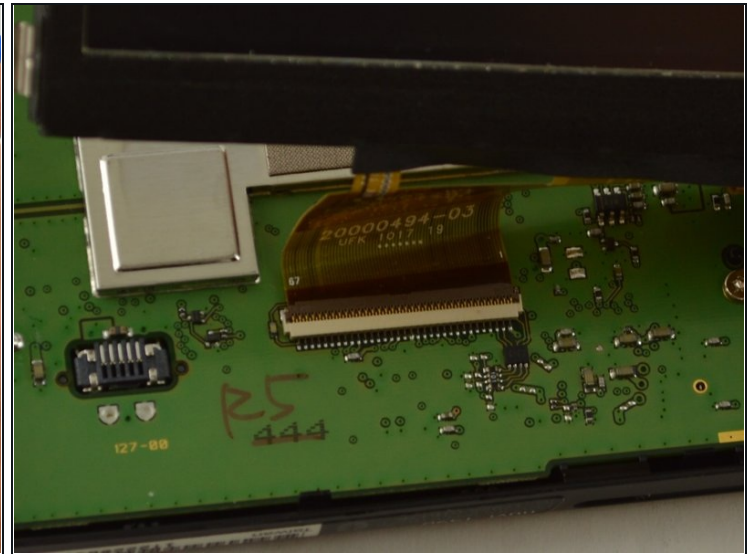
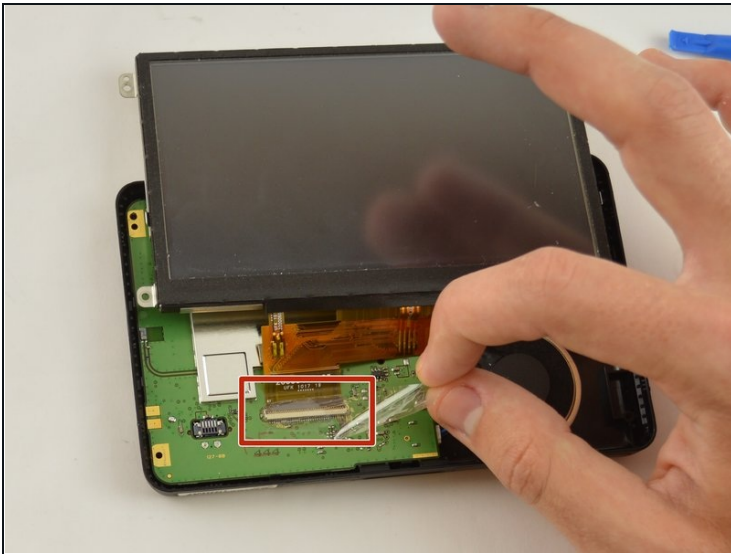
- Using the plastic prying tool, dislodge the frame from the body of the device.
- Using your hands, completely disconnect the frame from the body.
- Set the pieces of the frame aside.

Step 6 — Display Screen



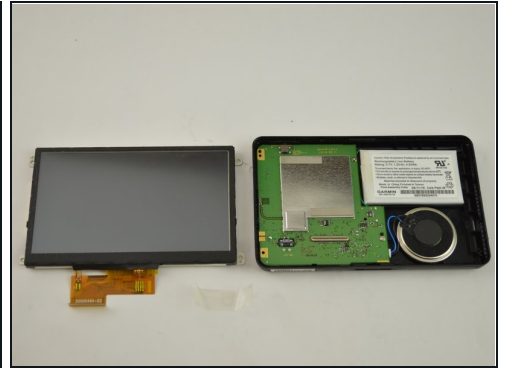
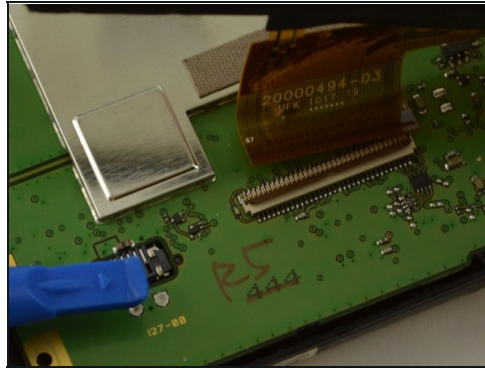
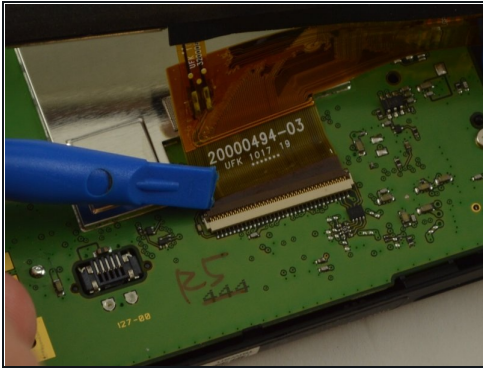
- Gently lift up the display screen using your fingers to make sure the only thing connecting it to the body is the ribbon cable.

Step 7



- Remove the piece of tape that is covering the connecting point of the motherboard and display.

Step 8



- Using the plastic opening tool or your fingers, lift up the ZIF connector holding the ribbon cable in place.
- Carefully pull the ribbon cable out of the connector with [tweezers](#) or two fingers.
- Gently disconnect the display by pulling upward. Set display aside.

⚠ If the display screen does not disconnect easily, make sure the ZIF connector is no longer holding it in place.

To reassemble your device, follow these instructions in reverse order.