



# ThinkPad X1 Carbon (2nd Gen) NGFF Wireless and M.2 SSD Cards Replacement

Written By: Ryan





## TOOLS:

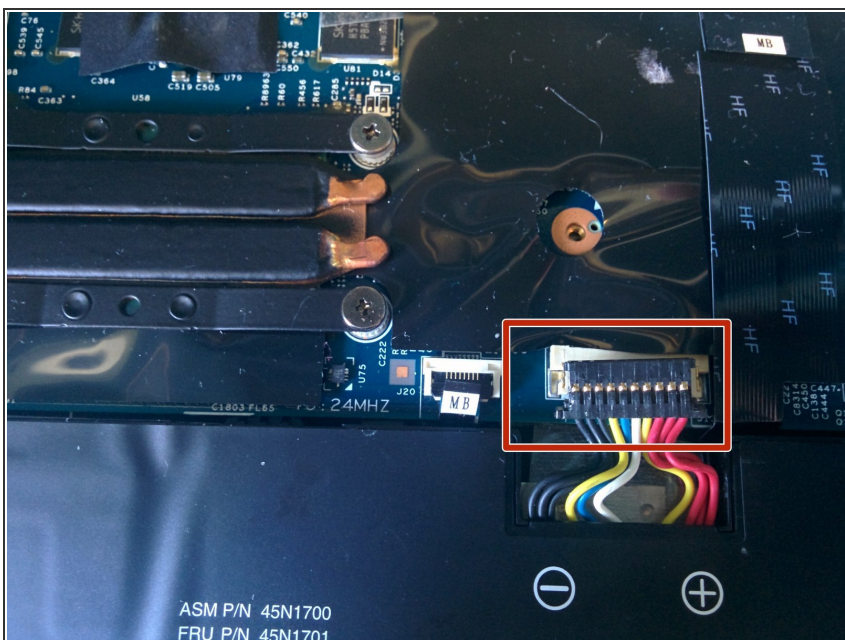
- [Phillips #00 Screwdriver](#) (1)
  - [Spudger](#) (1)
-

## Step 1 — Cover



- Remove the 7 philips head screws from the back.
- Lift off back cover.

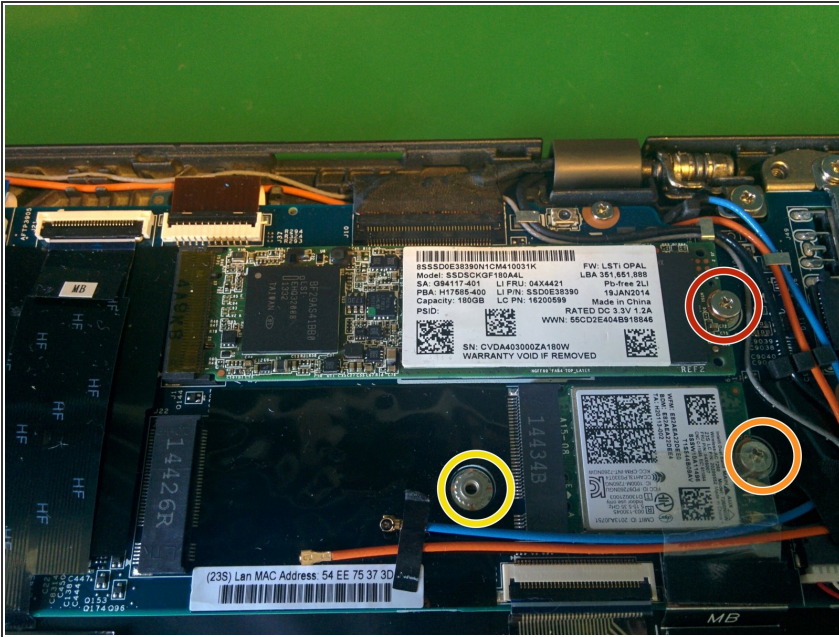
## Step 2 — Battery Disconnection



- Using a plastic pry tool disconnect the battery from the motherboard.



## Step 3 — NGFF Wireless and M.2 SSD Cards



- Remove the phillips screw and remove the M.2 SSD from the motherboard. (Intel® SSD 530 Series - SSDSCKGF180A4L)
- Remove the phillips screw from the NGFF WiFi card and remove . (7260NGW Intel® Dual Band Wireless-AC)
- If present also remove any cards from the second NGFF port.

To reassemble your device, follow these instructions in reverse order.