



Nabi 2 Screen Replacement

This guide shows how to remove and replace the screen on the Nabi 2.

Written By: Michelle



INTRODUCTION

Before beginning this guide we recommend following our Nabi 2 back cover removal guide.

This guide will walk you through the steps of replacing a cracked or otherwise non functioning screen on a Nabi 2. As the screen is glued to the front assembly, we recommend replacing the entire display assembly.

Be sure to use caution when releasing the clips that secure the display ribbon cables. Use a plastic spudger and push directly out, do not pry up on the clips, they will break.



TOOLS:

- [Phillips #00 Screwdriver](#) (1)
- [iFixit Opening Tools](#) (1)
- [Spudger](#) (1)
- [Tweezers](#) (1)



PARTS:

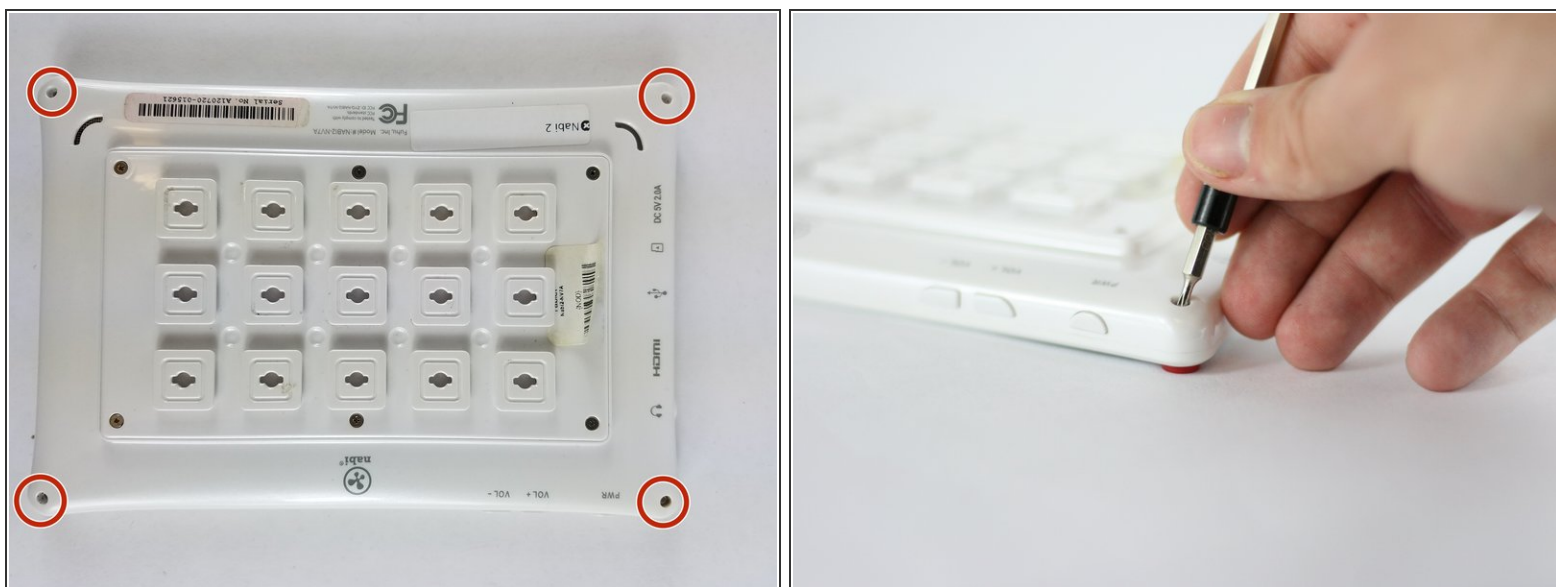
- [Fuhu Nabi 2 7" Display Assembly](#) (1)

Step 1 — Nabi 2 Back Cover Removal



- Remove the rubber bumper from the tablet.


Step 2



- With a PH00 screwdriver, remove the four outermost screws from the back of the tablet.

Step 3



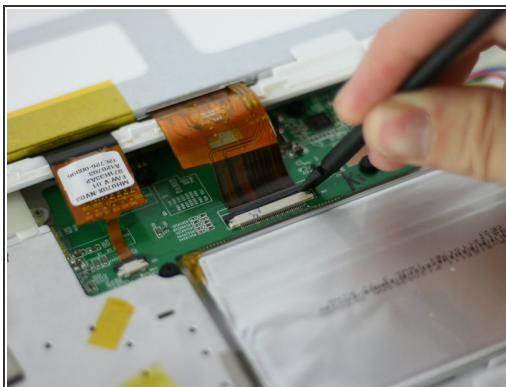
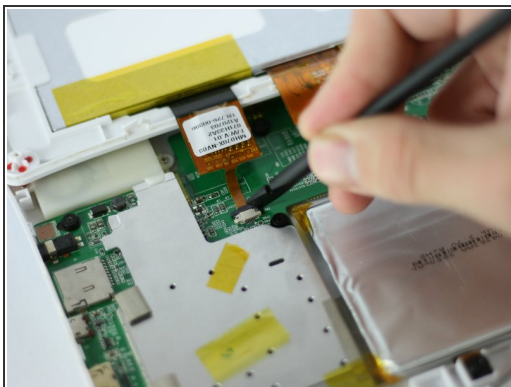
- Carefully, insert a plastic opening tool into the seam of the device and begin gently prying the two plastic pieces apart.
 - Work the tool all the way around the device. Small plastic clips should release. If they do not, gently apply outwards pressure until the clips give.
-  Do not force the clips open, as they are fairly easy to break

Step 4 — Screen



- Lay the tablet down flat and remove the yellow tape from the ZIF connector on each side

Step 5



- Using a spudger, slide the brown tab forward on each side of the connector
- Slide until the connector is completely loose, then separate the screen from the bottom half of the tablet
- If the screen is not working correctly, you will need to replace the entire display assembly

To reassemble your device, follow these instructions in reverse order.