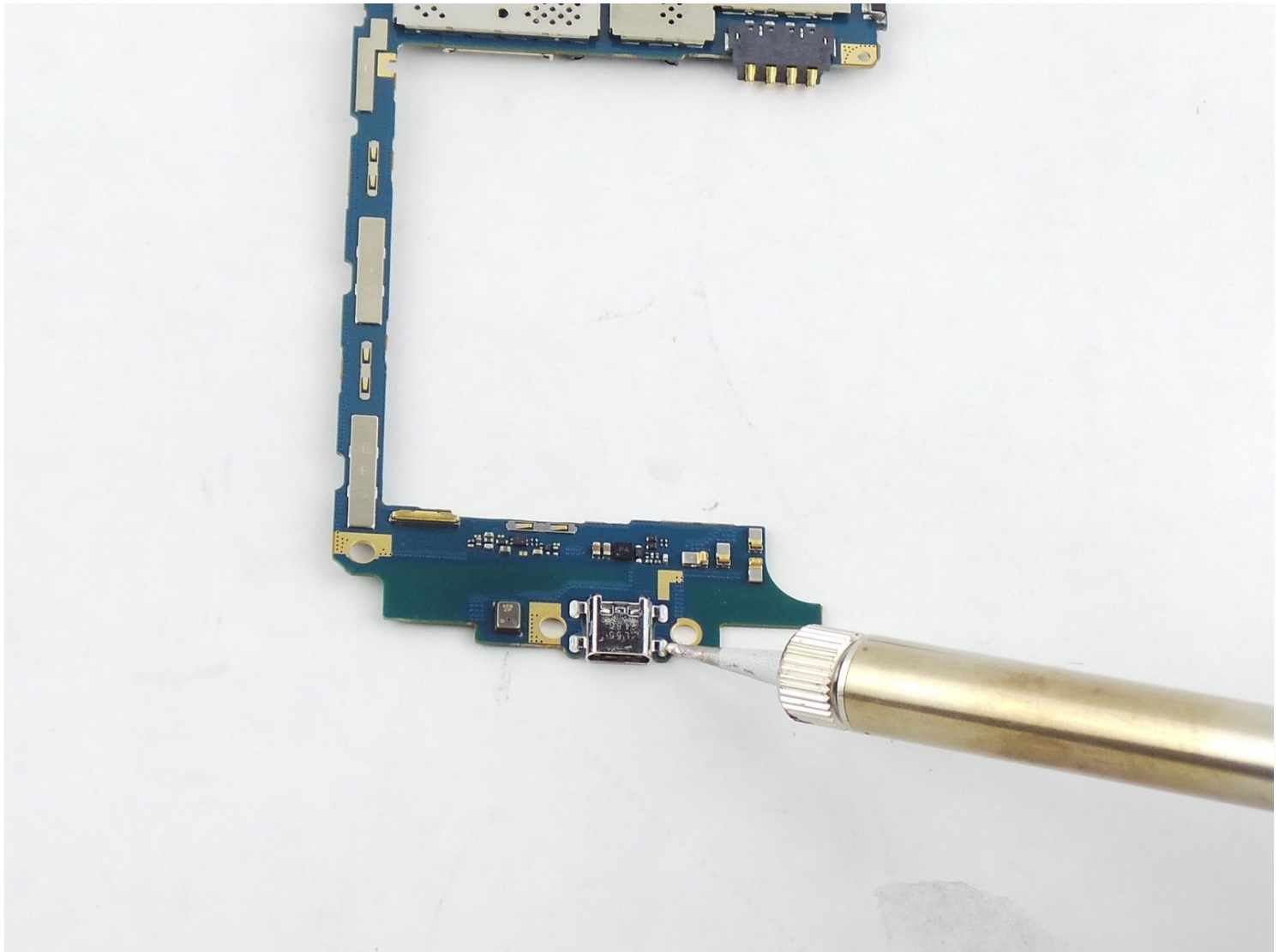




Samsung Galaxy Grand Prime Micro USB Port Replacement

This guide is needed when you have a faulty...

Written By: Kyle Ruff



INTRODUCTION

This guide is needed when you have a faulty charging port.

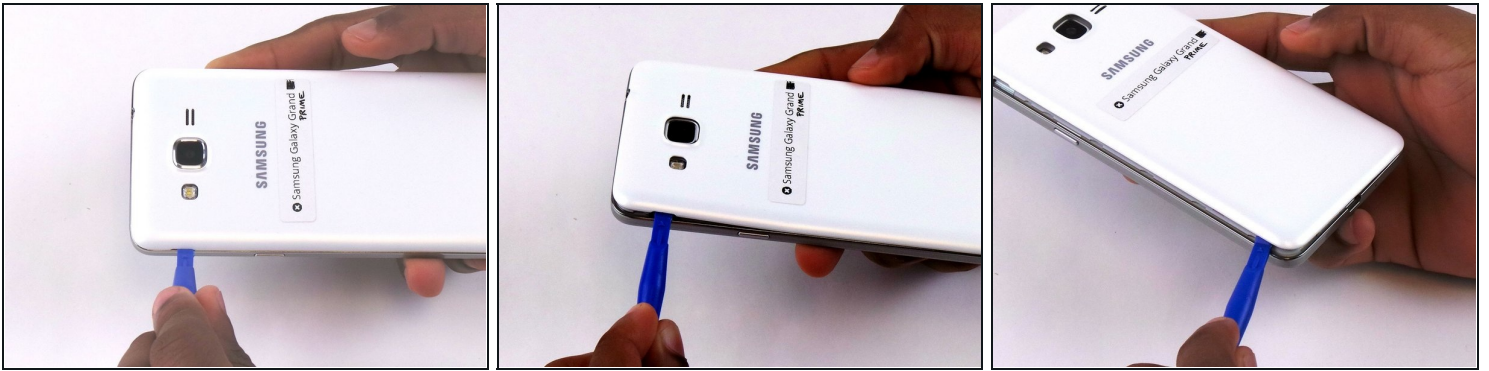
TOOLS:

Phillips #000 Screwdriver (1)

iFixit Opening Tool (1)

Tweezers (1)

Step 1 — Battery



- Remove the back cover of phone by lifting up on the back cover tab with the blue plastic opening tool.
- Go around the edge of the back cover to completely remove it.

Step 2 — Remove the battery.



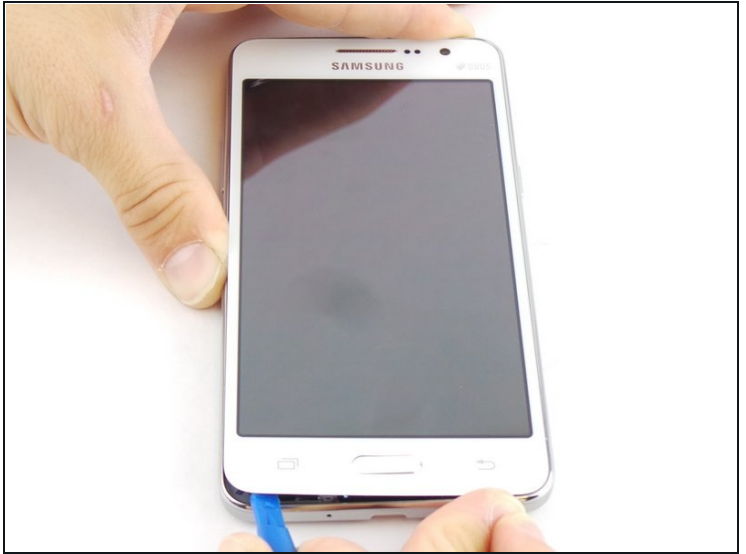
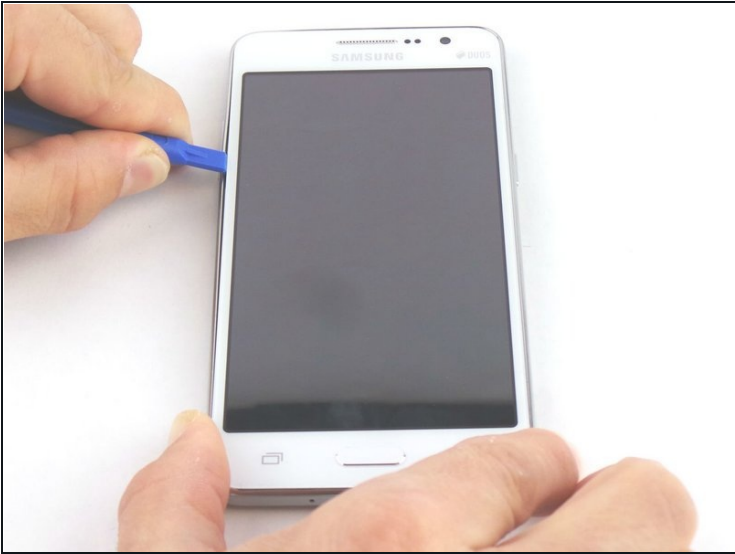
- Remove the old battery by lifting up on the thumb tab.
- Periodically clean the brass terminals on the battery and the phone. Place a minute amount of ISO on a Q-tip and gingerly clean the connections.

Step 3 — Midframe



- Remove the nine 4mm screws from the midframe with a Phillips #000 screwdriver.

Step 4



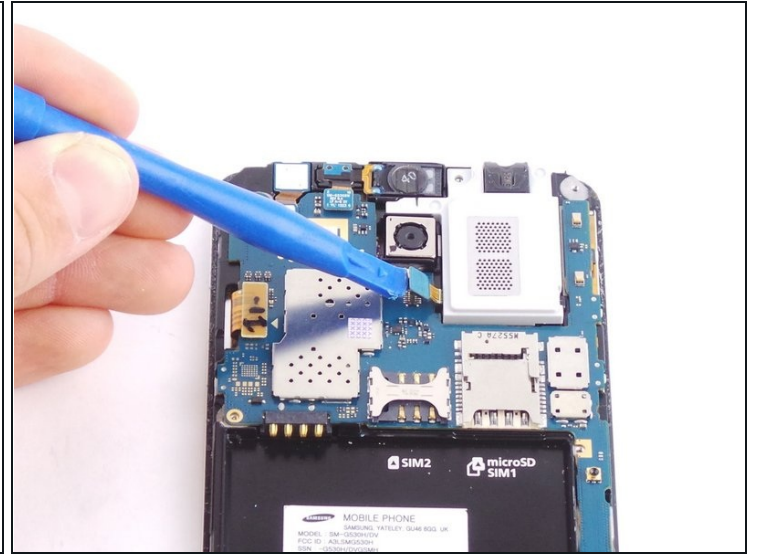
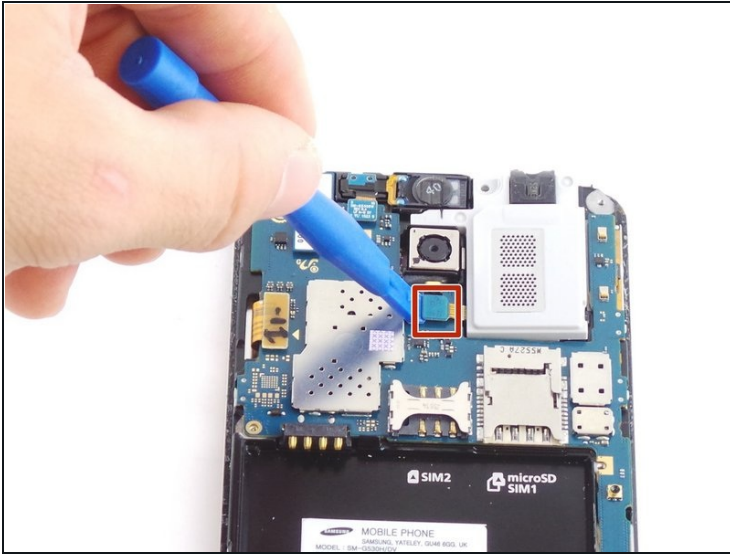
- Wedge the blue plastic opening tool in between the front and side panel.
- Move the blue plastic opening tool around the edges between the front and side panel.

Step 5



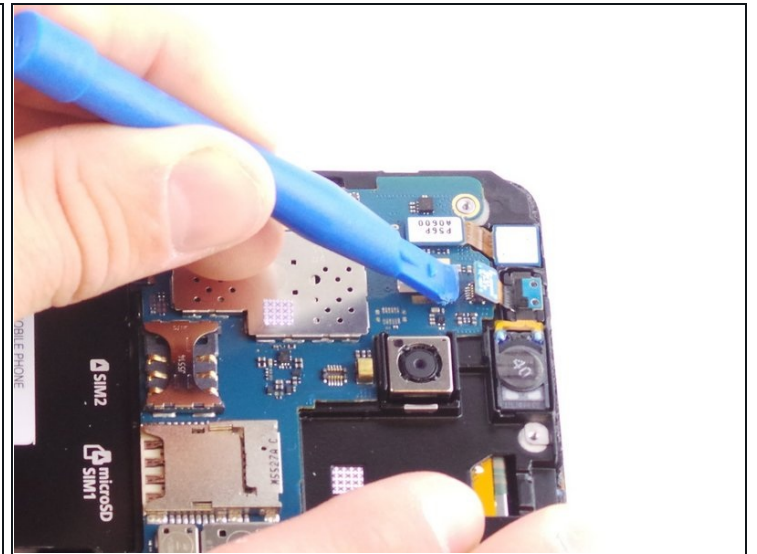
- Make sure that you detach the mid-frame from the inside too.

Step 6 — Headphone Jack/Speaker Assembly



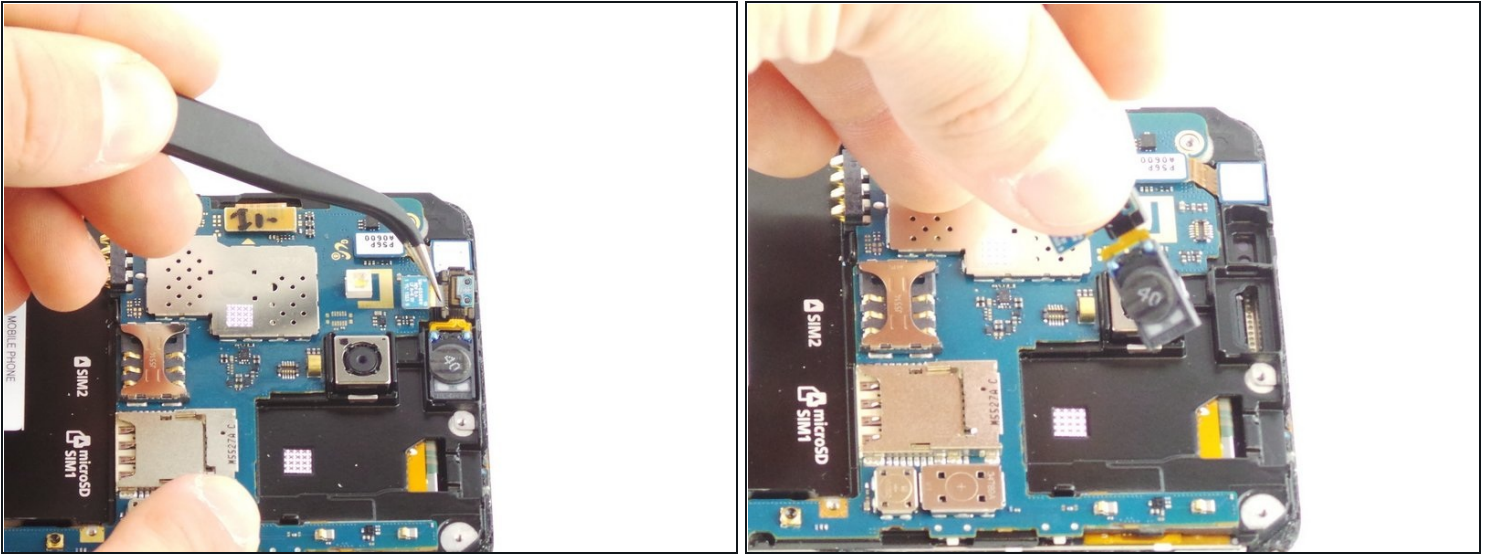
- Unhook the ribbon cable clip with the plastic opening tool and remove the audio jack.

Step 7 — Earpiece Speaker



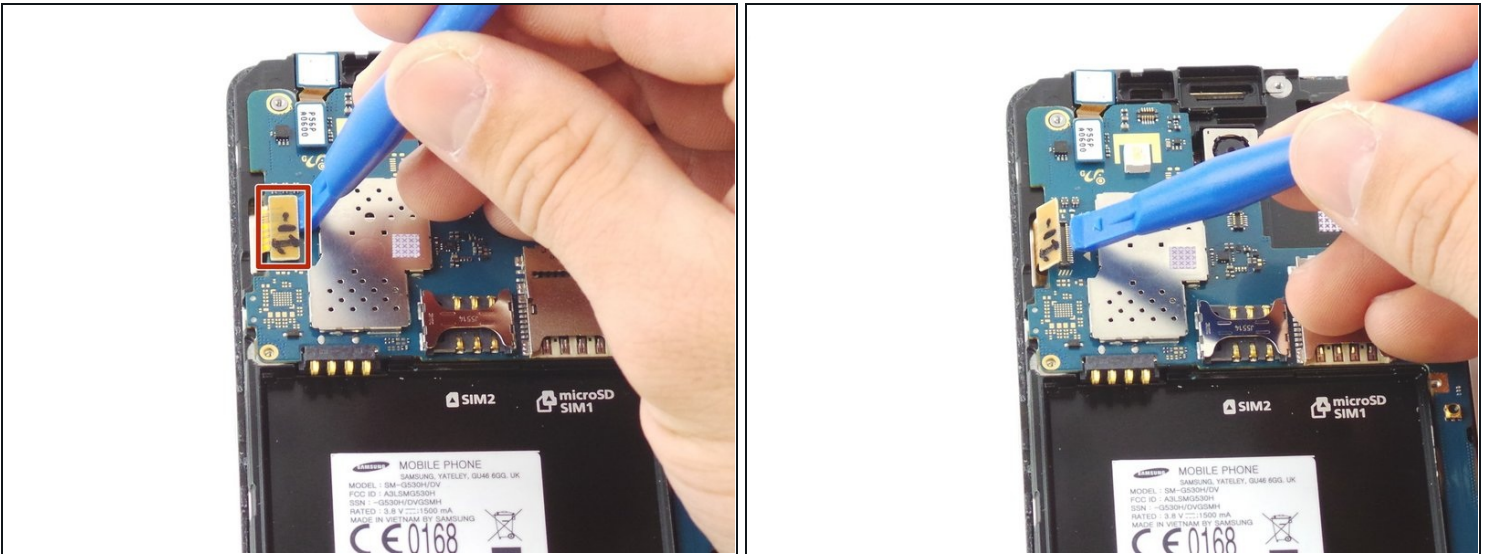
- Use the plastic opening tool to unhook the ribbon cable clip.

Step 8



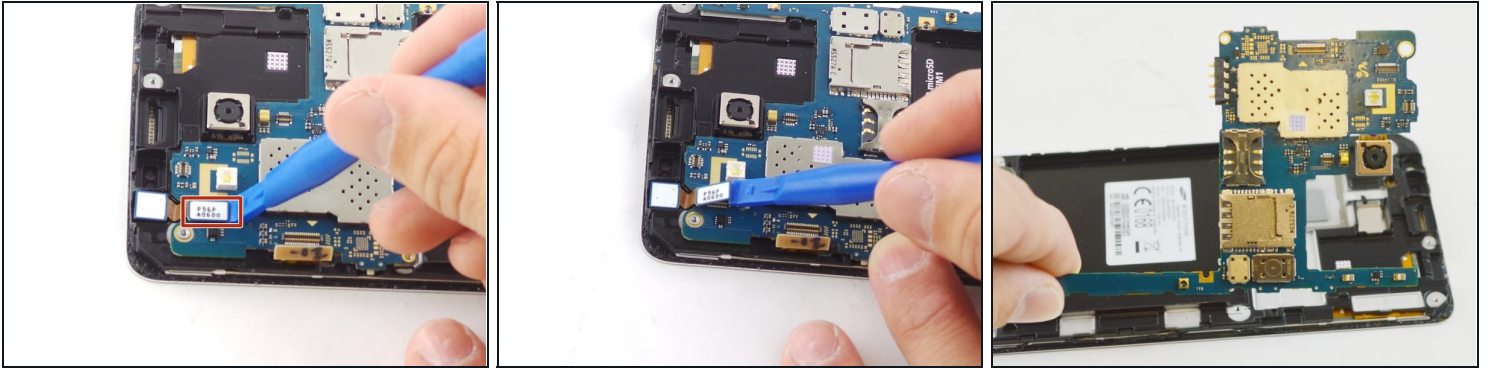
- Gently pull on the connector with the tweezers until the speaker comes off.

Step 9 — Motherboard



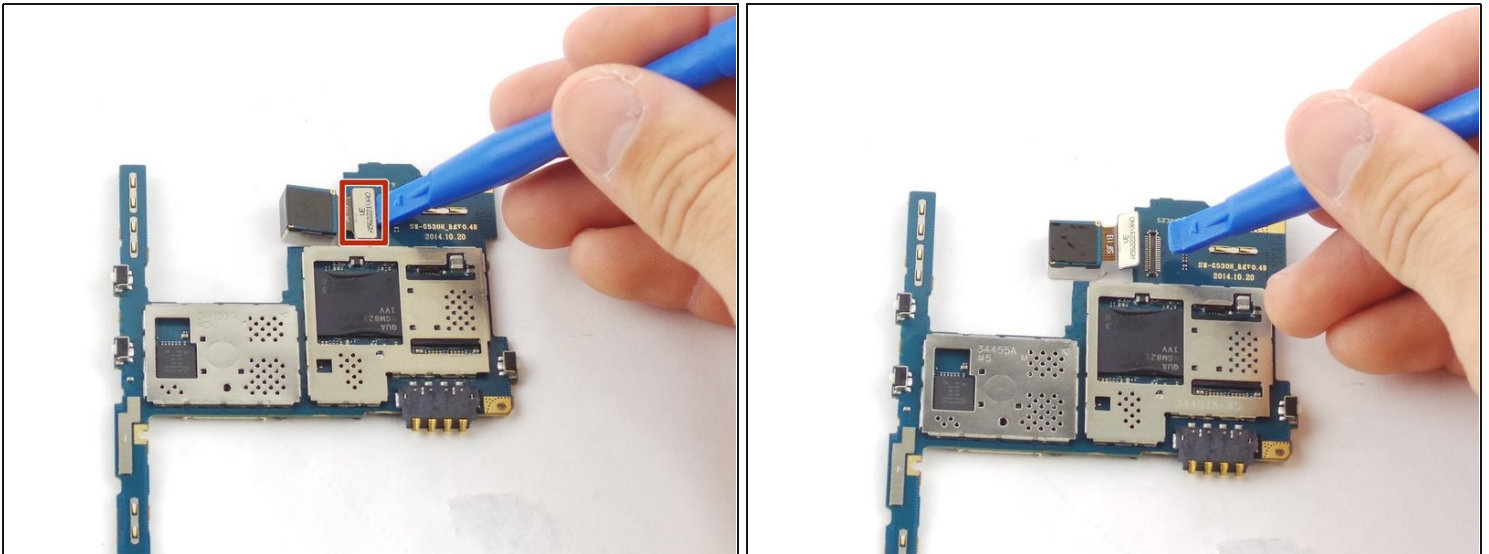
- Unhook the other ribbon cable clip to the screen with the blue plastic opening tool.

Step 10



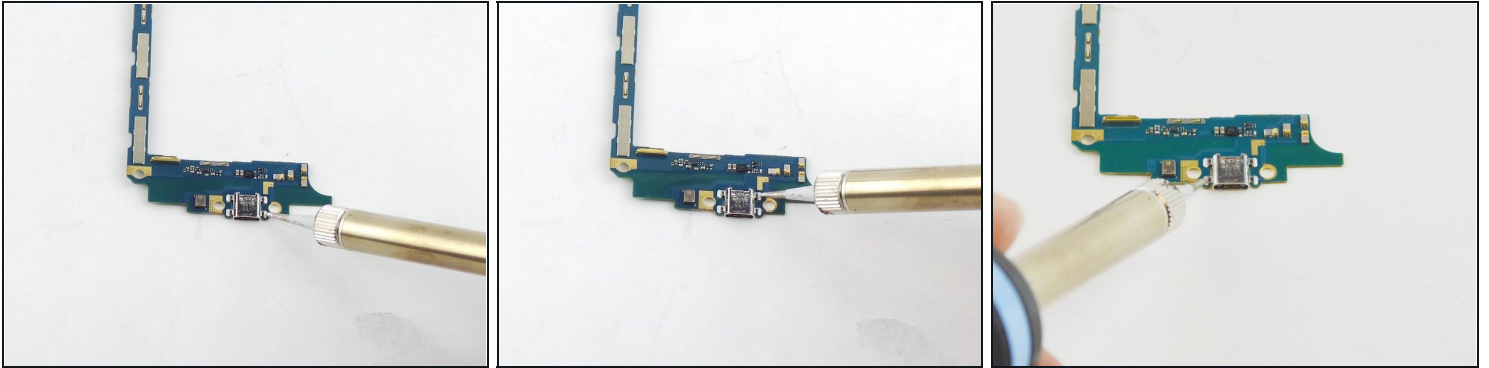
- Unhook the ribbon cable clip to the front camera.
- Lift the motherboard up and out of the device.

Step 11



- Remove the motherboard and unhook the ribbon cable clip to the back camera.

Step 12 — Micro USB Port



- Using a soldering iron to solder off the charging port.

⚠ Be careful soldering iron gets extremely hot.

To reassemble your device, follow these instructions in reverse order.